



BOARD ARCHITECTURAL REVIEW SUBMITTAL

NOVEMBER 4, 2013

TUKWILA LIBRARY
KING COUNTY LIBRARY SYSTEM

PERKINS+WILL



TABLE OF CONTENTS

| | |
|----------------------------------|----|
| PROJECT STATEMENT | 2 |
| DESIGN | 3 |
| Site Plan | 4 |
| Floor Plan | 5 |
| Building Elevations | 7 |
| Ground Condition Sections | 8 |
| Building Perspective Views | |
| SITE LIGHTING | 11 |
| Exterior Light Fixture Cutsheets | |
| SITE FURNISHINGS | 15 |
| Table and Chairs | 19 |
| Bicycle Rack | |
| SIGNAGE | 21 |
| Proposed Signage Plan | 22 |
| Proposed Signage Design Intent | |
| PARKING | 24 |
| Dimensioned Parking Plans | |
| APPENDIX | 26 |

PROJECT STATEMENT

The careful siting of the new Tukwila Library provides convenient access for vehicles and pedestrians alike. The circulation around the site emphasizes safety in the separation of vehicular and pedestrian paths. The transparency of the library façades allows for informal surveillance and promotes safety in the neighborhood. Conscientious site lighting has been incorporated to further promote safety.

All four sides of the building exhibit 'Pedestrian Oriented Features' and are by definition 'Pedestrian Friendly Facades' (Tukwila International Boulevard Design Manual). All façades feature extensive use of transparent glass, and generous walkways flanked by native or adapted landscaping. The building and site are enhanced by a variety of 'Pedestrian Amenities'. The three primary entries to the site prominently feature pedestrian amenities such as extensive landscaping, attractive signage, site furnishings, tree grates, artwork, pedestrian light fixtures, and special paving.

Site amenities such as parking, vehicular circulation, and pedestrian paths will be shared with the neighboring parcels to promote efficient use of resources. Parking (by others) will be located on the north side of the site. The entry at the northeast corner of the building is located with convenient access to the parking and promotes a strong connection to the adjacent park (by others). The library entry will be visible from SE 144th street and the adjacent public sidewalk. The entry is visually connected to Tukwila International Boulevard through a bay window on the west facade that is both an interior and exterior feature. The bright color creates a focal point that draws the eye through the building to the east entry, which is directly on axis with the bay window on the west.

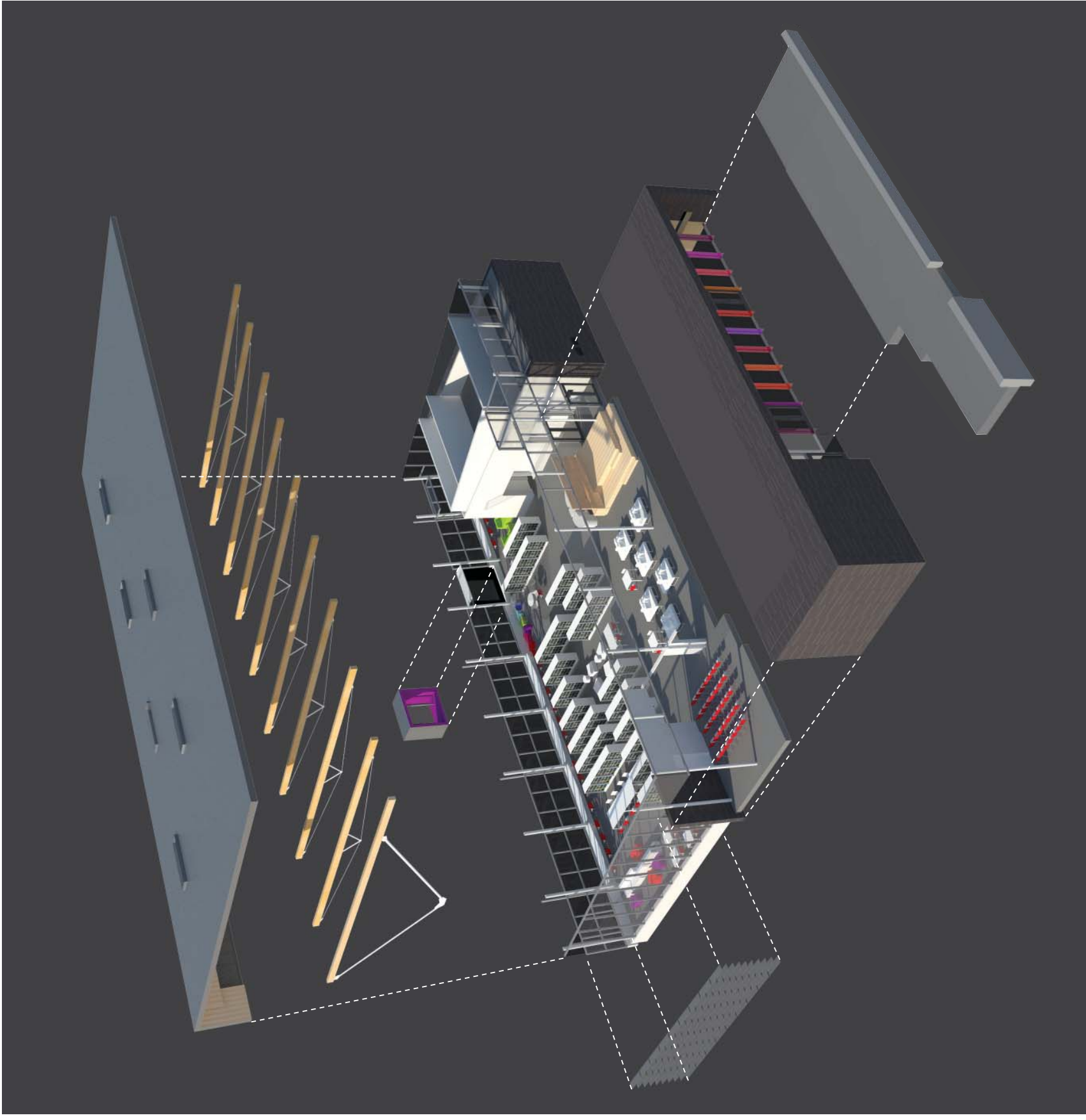
The primary corner at the intersection of Tukwila International Boulevard and SE 144th street is accentuated by a highly transparent façade, special paving, and a public art piece commissioned by the library. The extensive use of glass at this corner serves as an advertisement for the library, announcing the activities within and welcoming participation. Large scale concrete planks set in a playful pattern encourage pedestrians to cut through the landscaping at the corner and invites the public to interact with the proposed sculpture, which will be a prominent element in the landscape.

A generously sized wrap-around stair announces entry to the site at the southeast corner that borders SE 144th Street and the Community Commons. The stair encourages pedestrian circulation through an outdoor terrace that will serve as an extension of the library and will lead patrons to the front door. The terrace will feature a continuous seat wall with integrated lighting, special paving, and durable site furnishings. The entry is accentuated by a clear glass vestibule that projects from the planar glass façade and colorful glass fins of the east façade along the terrace.

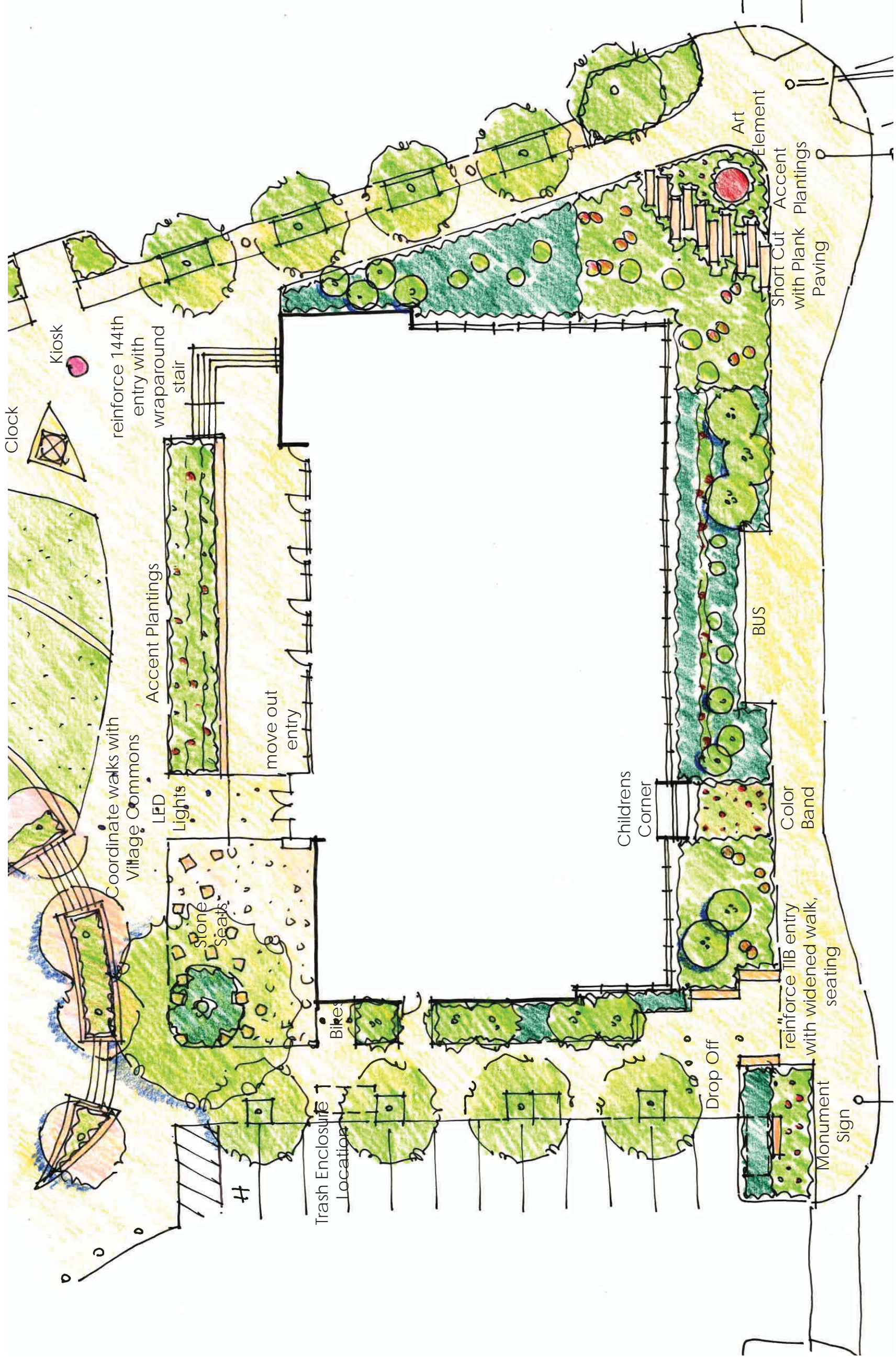
The community mosaic is a space unique to the Tukwila Library that is being funded entirely by the KCLS foundation. The foundation recognizes that there is a unique opportunity to foster community, given the diverse population in Tukwila. The mosaic employs flexible planning with operable walls and modular furniture elements that can be configured in a variety of different ways. It will have a performance platform that can accommodate a multitude of different community events and will feature a one of a kind art installation meant to encourage patron participation.

The library design expresses major program elements including the community mosaic and staff work area as distinct volumes under a large unifying roof gesture. The roof slopes from east to west before transitioning into a decorative screen on the west façade. The screen not only provides solar shading for the west façade glazing, it creates a layering effect that will provide visual interest along Tukwila International Boulevard. The collection has been placed toward the center of the building in order to encourage patrons to inhabit the library perimeter, which will have the best access to daylight and views. The areas considered to have the highest activity have been oriented along TIB in order to engage pedestrians passing by.

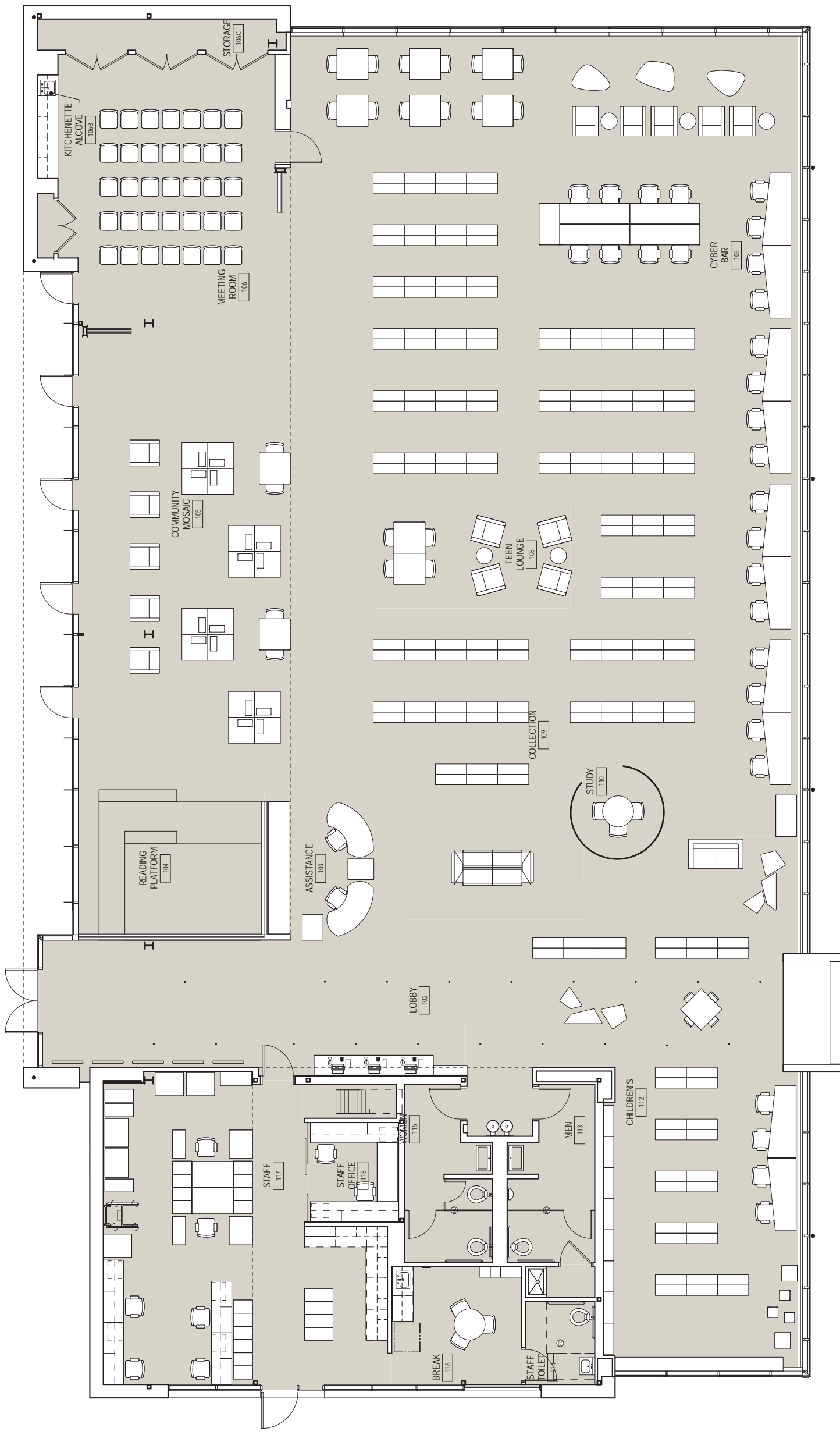
All materials that have been chosen for the library were selected for their natural appearance, ease of maintenance, and durability. The primary exterior materials are terra cotta, glass, timber, zinc, and exposed concrete. The trash enclosure will be constructed of durable materials that are within the building palette. The primary structure is comprised of steel and timber trusses, which are clearly expressed on the interior. The underside of the cross laminated timber deck will exude warmth to all interior spaces. The cool polished concrete that covers much of the finish floor is highly durable and creates neutral canvas on which to build a bright, colorful, and playful interior.



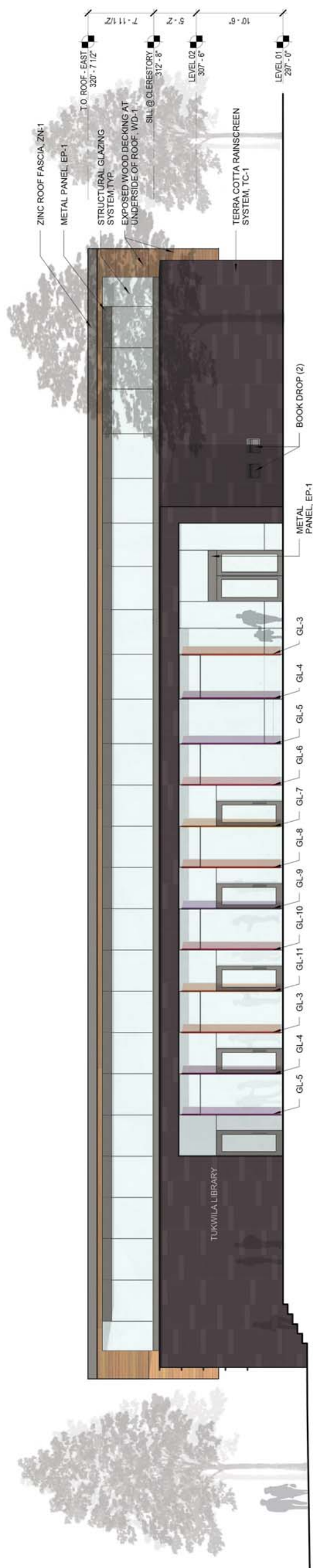
EXPLODED AXONOMETRIC



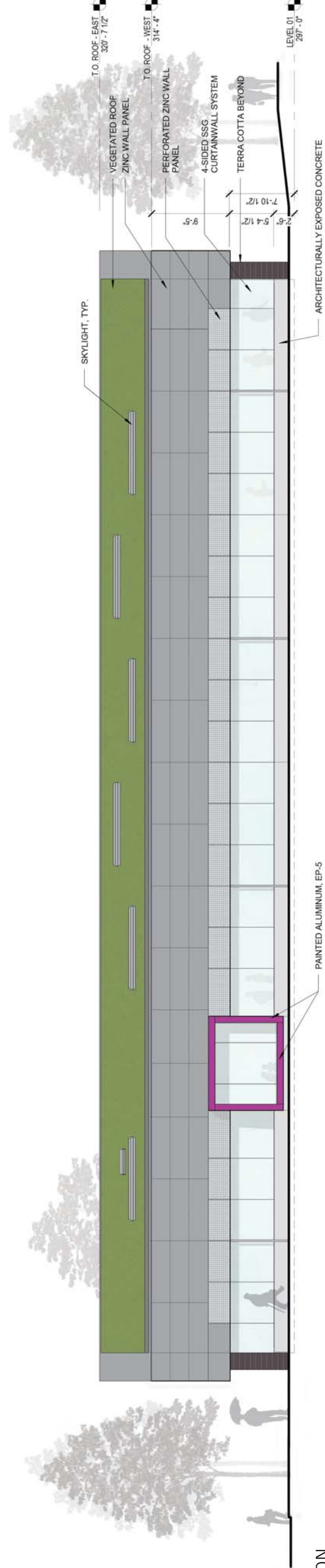
1 1 1
0 10 20



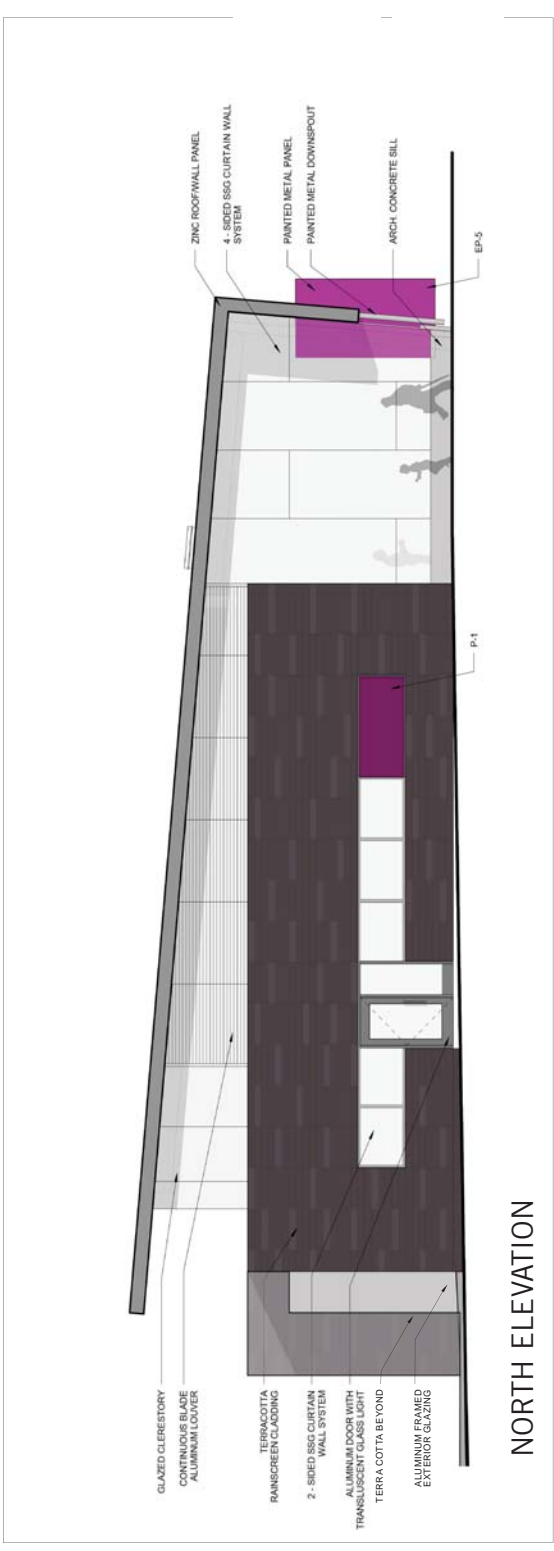
FLOOR PLAN - LEVEL 01



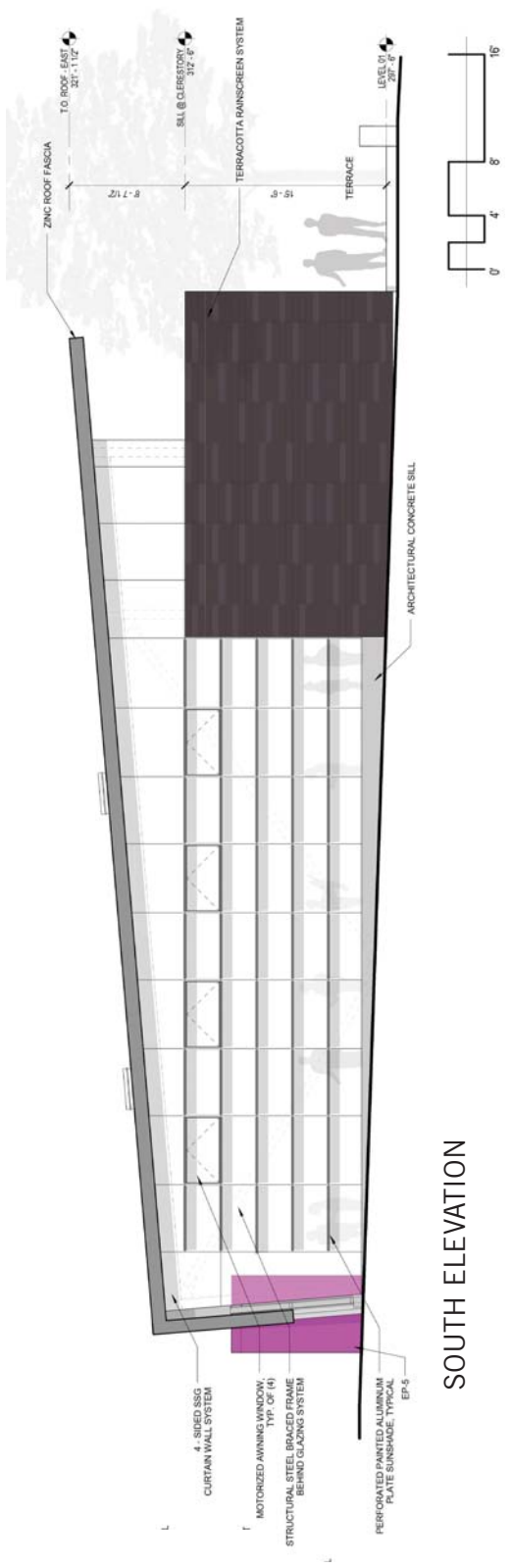
EAST ELEVATION



WEST ELEVATION

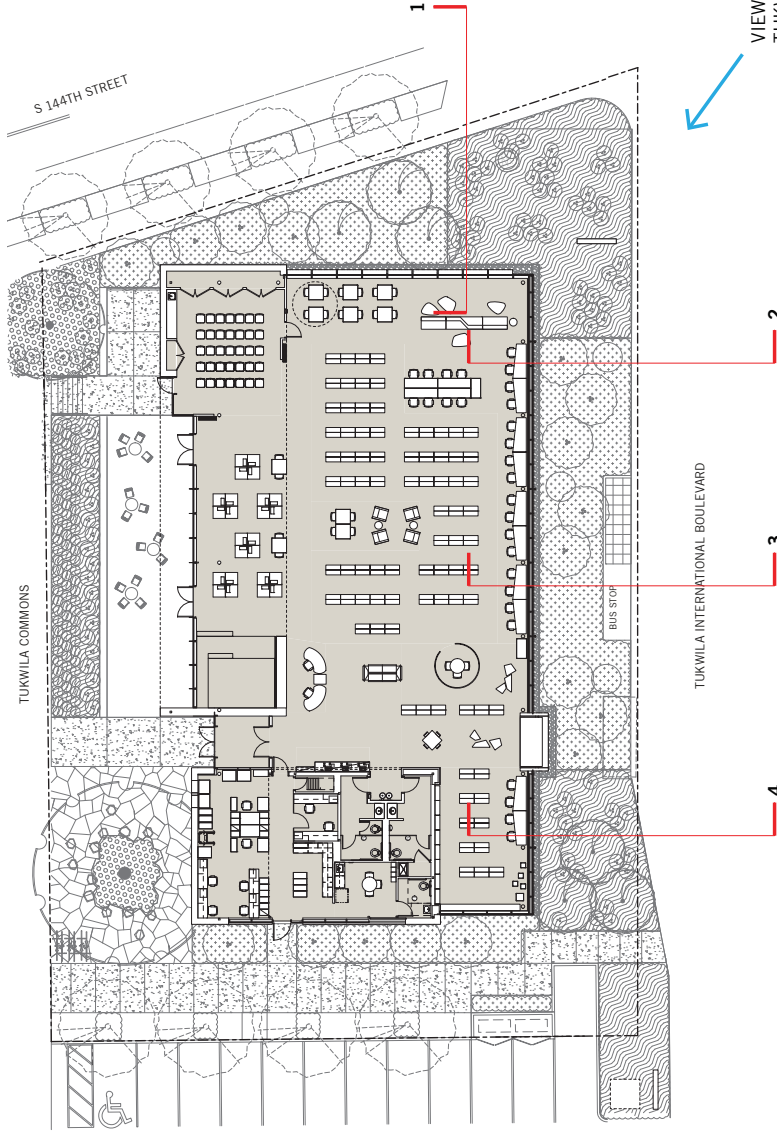


NORTH ELEVATION

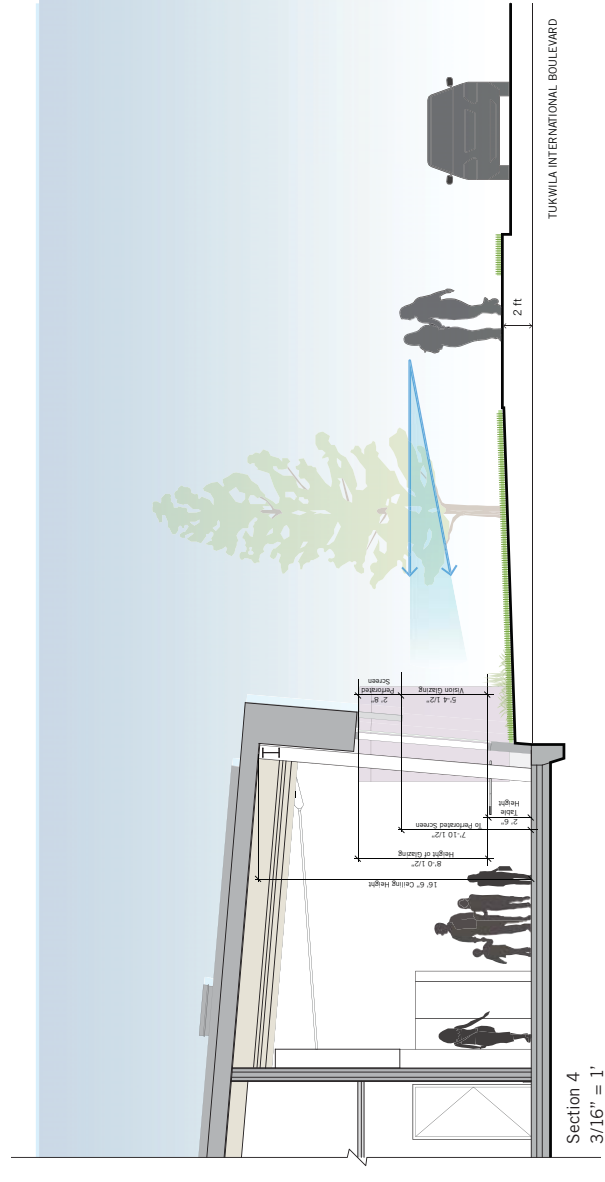
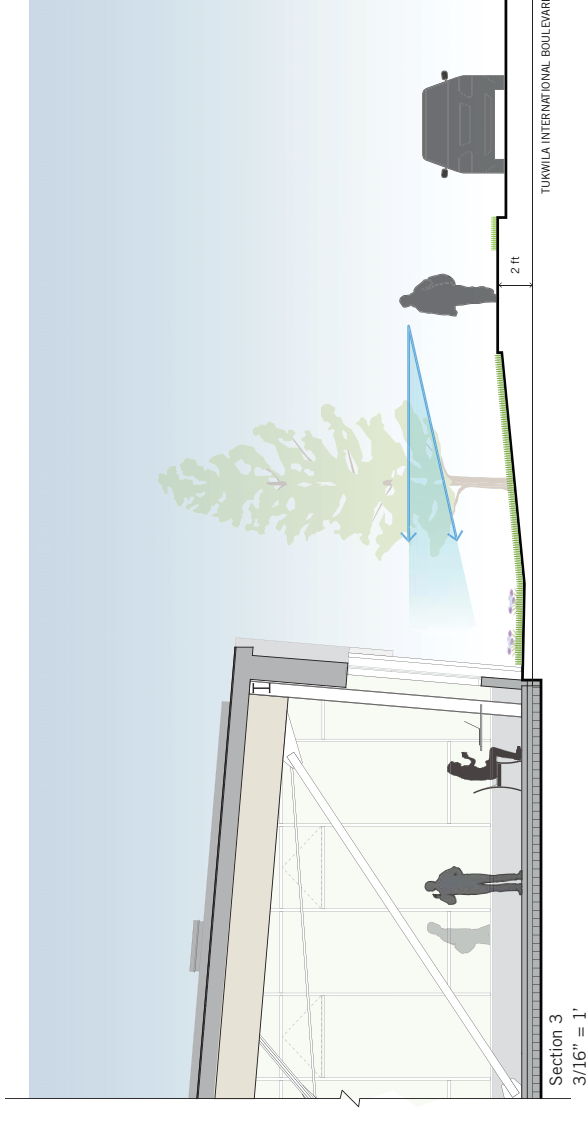
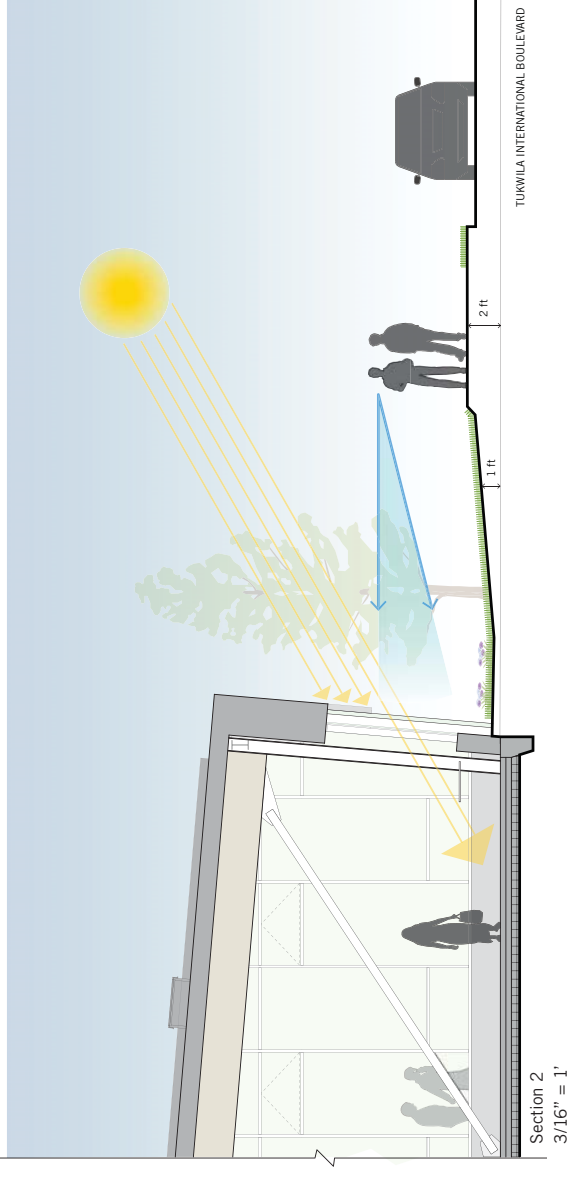
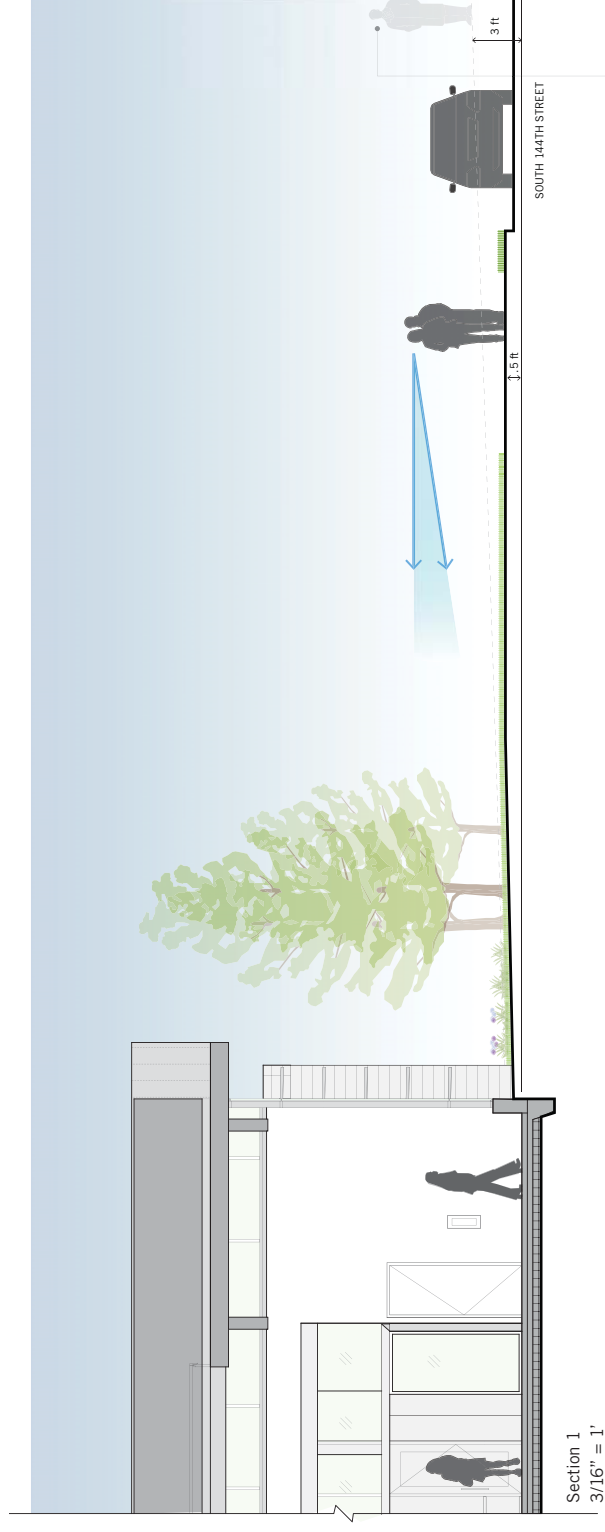


SOUTH ELEVATION

VIEW FROM COMMUNITY COMMONS, LOOKING SOUTHWEST



VIEW FROM INTERSECTION OF TUKWILA INTERNATIONAL BOULEVARD AND S 144TH STREET, LOOKING NORTHEAST





VIEW OF LIBRARY FROM COMMUNITY COMMONS, LOOKING SOUTHWEST



VIEW OF LIBRARY FROM SOUTHWEST (INTERSECTION OF TUKWILA INTERNATIONAL BOULEVARD AND SE 144TH STREET)



VIEW OF LIBRARY FROM NORTHWEST ALONG TUKWILA INTERNATIONAL BOULEVARD

Light building element for ceramic metal halide lamps

Post construction: Made from four triangular aluminum extrusions, mechanically fastened to a cylindrical extruded lamp housing (top) and a wiring/ballast compartment (bottom).

Enclosure: One piece die-cast aluminum extruded housing (top). Clear, molded tempered glass, 3/4" thick, extends below the lamp enclosure to increase the light spread. Lens is secured to the lamp enclosure with a one piece die-cast trim ring, secured to housing with four (4) stainless steel screws. Fully gasketed using a one piece molded high temperature silicone gasket for weather tight operation. Reflector made from pure anodized aluminum.

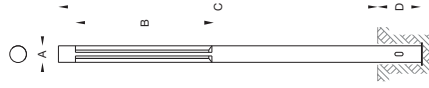
Electrical: Lampholders: G12 bi-pin with nickel plated contacts supplied, rated 600V, pulse rated 5KV. Ballast is electronic, available in universal voltage 120V through 277V and is located in the base of the luminaire.

Mounting: Luminaire is rated for direct burial installations.

Finish: These luminaires are available in four standard BEGA colors: Black (BLK); White (WHT); Bronze (BRZ); Silver (SLV). To specify, add appropriate suffix to catalog number. Custom colors supplied on special order.

UL listed, suitable for wet locations. Protection class: IP65.

Type:
 BEGA Product:
 Project:
 Voltage:
 Color:
 Options:
 Modified:



| Lamp | Lumen | A | B | C | D | |
|----------------|------------------|-------|----|-----|------|--------|
| 8950 MH | 1 150W T6 G12 MH | 14000 | 8% | 81% | 177% | 31 1/2 |

BEGA-US 1000 BEGA Way, Carpinteria, CA 93013 (805) 684-0533 FAX (805) 566-9474 www.bega-us.com
 ©copyright BEGA-US 2010 Updated 6/10

L01

Bollards with wide spread light distribution

Post construction: Made from four triangular aluminum extrusions mechanically fastened to a one piece die-cast splice compartment (bottom) and a one piece die-cast lamp housing (top). The aluminum is marine grade and copper free.

Enclosure: One piece die-cast aluminum lamp housing. Clear, molded, tempered glass 3/4" thick extends below lamp housing to increase light spread. Lamp housing secured with two (2) stainless steel, captive fasteners. Fully gasketed using a one piece, molded, high temperature silicone gasket for weather tight operation. Reflector made from pure, anodized aluminum.

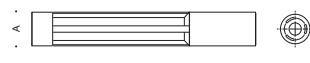
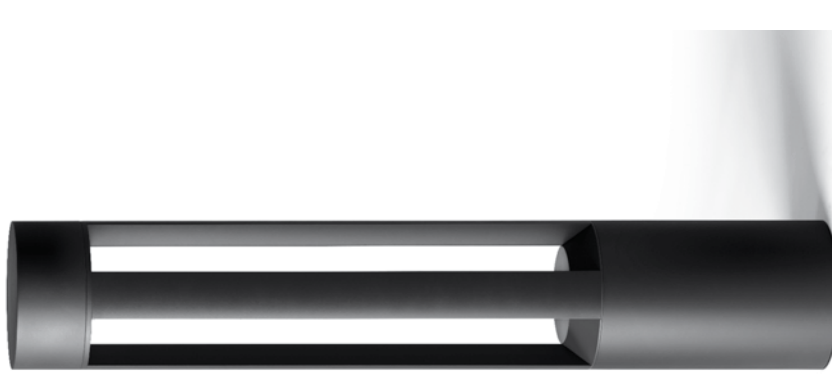
Electrical: 19.6 W LED luminaire, 20.5 total system watts, -30° C start temperature. Integral 120V through 277V electronic LED driver, 0-10V dimming. Standard LED color temperature is 5000K with a >80 CRI. Available in 3000K (>80 CRI) and 4000K (>80 CRI); add suffix K3 or K4 respectively to order.

Anchor base: Heavy cast aluminum, slotted for precise alignment. Mounts to BEGA #895A anchorage kit. Bollards are secured to the post with one (1) stainless steel set screw.

Finish: Available in four standard BEGA colors: Black (BLK), White (WHT), Bronze (BRZ), Silver (SLV). To specify, add appropriate suffix to catalog number. Custom colors supplied on special order.

U.L. listed, suitable for wet locations. Protection class: IP65.
 Weight: 16.1 lbs.

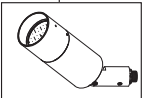
Type:
 BEGA Product:
 Project:
 Voltage:
 Color:
 Options:
 Modified:



| Lamp | A | B | Anchorage | |
|-----------------|-----------|-------|-----------|--------------|
| 8452 LED | 19.6W LED | 6 1/2 | 39% | 895 A |

BEGA-US 1000 BEGA Way, Carpinteria, CA 93013 (805) 684-0533 FAX (805) 566-9474 www.bega-us.com
 ©copyright BEGA-US 2012 Updated 10/12

L02



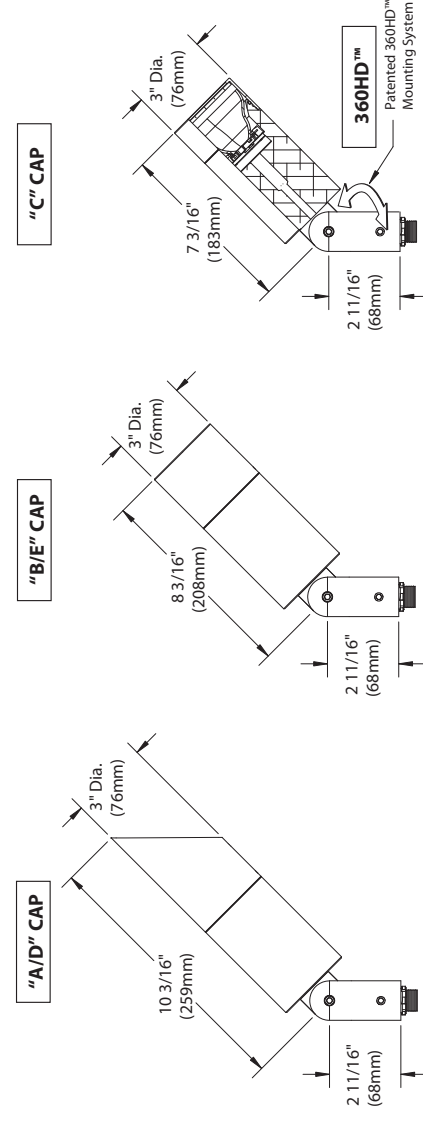
DENALI™ FLOODLIGHT

UNIVERSAL POWER MODULE
UPM
 THE POWER OF
BKSSSL
 BUILT TO LAST. LIGHTS THAT LAST.

Constant Current Driver

PROJECT: **PM2RM TREE STRAP™**

TYPE:



All dimensions indicated on this submittal are nominal. Contact Technical Sales if you require more stringent specifications.

Accessories (Configure separately)

| | | | | | | | | | |
|--|-------------|----------|-------------|-------------|-----|-----|-------|----------------|----------|
| | Tree Strap™ | Canopies | Power Pipe™ | Power Pipe™ | HP2 | TMB | HP2BM | PM2DRM & PM2RM | RM & DRM |
|--|-------------|----------|-------------|-------------|-----|-----|-------|----------------|----------|

Mounting:

Drivers:

Specifications

GreenSource Initiative™
 Metal and packaging components are made from recycled materials. Manufactured using renewable solar energy, produced onsite. Returnable to manufacturer at end of life to ensure cradle-to-cradle handling. Packaging contains no chlorofluorocarbons (CFCs). Use of this product may qualify for GreenSource efficacy and recycling rebates. Consult www.bklighting.com/greensource for program requirements.

Materials
 Furnished in Copper-Free Aluminum (Type 6061-T6).

Body
 Fully machined from solid billet. Unibody design provides enclosed, water-proof wireway and integral heat sink for maximum component life. Integral knuckle for maximum mechanical strength. High temperature, silicone O Ring provides water-tight seal.

Knuckle
 Patented 360HD™ Mounting System features a mechanical taper-lock, which allows a full 180° vertical adjustment without the use of serrated teeth, which inherently limit aiming. High temperature, silicone O Ring provides water-tight seal and compressive resistance to maintain fixture position. Design withstands 73 lb. static load prior to movement to ensure decades of optical alignment. 1/2" pipe thread for mounting. Biaxial source control additionally provides 360° horizontal rotation in addition to vertical adjustment. Aim-And-Lock™ technology allows precision adjustment without the redundant tightening and loosening of knuckle screw.

Cap
 Fully machined. Accommodates 2 lens or lower media. Choose from 45° cutoff (A or D), 1° deep bezel with 90° cutoff (B or E) or flush lens (C) cap styles. A and B caps include weep-hole for water and debris drainage. D and E caps exclude weep-hole and are for interior use only.

Lens
 Shock resistant, tempered, glass lens is factory adhered to fixture cap and provides hermetically sealed optical compartment.

BKSSSL™
 Integrated solid state system with X technology is scalable for field upgrade. Modular design with electrical quick disconnects permit field maintenance.

Color Management
 Corrected cold phosphor technology delivers near-perfect natural white light. Long term phosphor maintenance over product life. Exact color point conformity exceeds ANSI C78377 standard. Provides uniform beam with no color variation over angle. Module exceeds 80 CRI (RA>80, R9>16).

Remote Driver
 For use with remote LED driver. See remote driver submittal to determine remote distance and wiring requirements prior to detailing field installation of any remote wiring.

Optics
 Interchangeable OPTIKIT™ modules permit field changes to optical distribution.

Wiring
 Teflon coated, 18AWG, 600V, 250° C rated and certified to UL 1659 standard.

Hardware
 Tamper-resistant, stainless steel hardware. 360HD™ hardware is additionally black oxide treated for additional corrosion resistance.

Finish
 StarGuard™, our exclusive RoHS compliant, 15 stage chromate-free process cleans and conversion coats aluminum components prior to application of Class A TGC polyester powder coating.

Warranty
 5 year limited warranty.

Certification and Listing
 ITL tested to IESNA LM-79. Lighting Facts Registration per USDOE (www.lightingfacts.com). ETL Listed to ANSI/UL Standards 1598, 8750 and Certified to CAN/CSA Standard C22.2 No. 250. RoHS compliant. Suitable for indoor or outdoor use. Suitable for use in wet locations. Additionally suitable for installation within 4' of the ground. IP66 Rated. Made in USA.

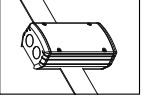
USA

 lighting facts
 RoHS

*Teflon is a registered trademark of DuPont Corporation
 Energy Star is a registered trademark of the United States Environmental Protection Agency.

| | | | |
|---------------------|--|---------------------------------|---|
| B-K LIGHTING | 40429 Brickyard Drive • Madera, CA 93638 • USA | 559.438.5800 • FAX 559.438.5900 | www.bklighting.com • info@bklighting.com |
| | SUBMITTAL DATE: 3-12-12 | | DRAWING NUMBER: SUB001113 |

L03

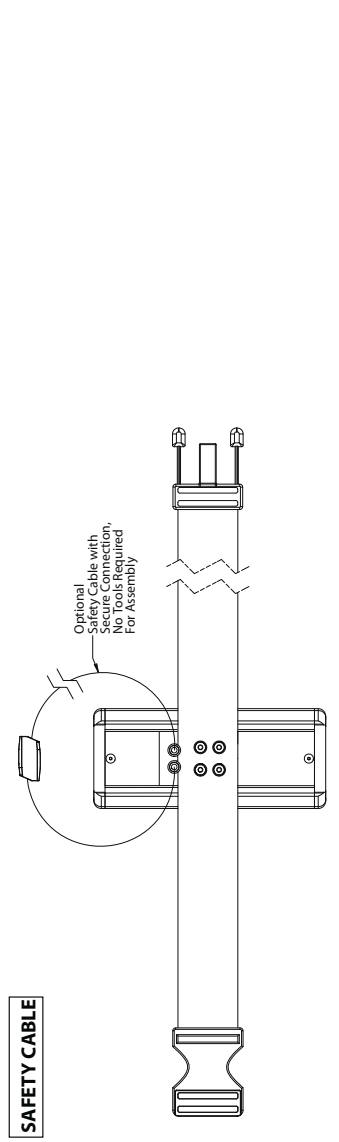
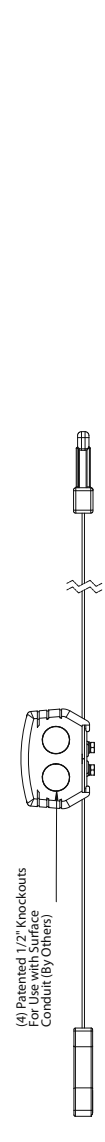
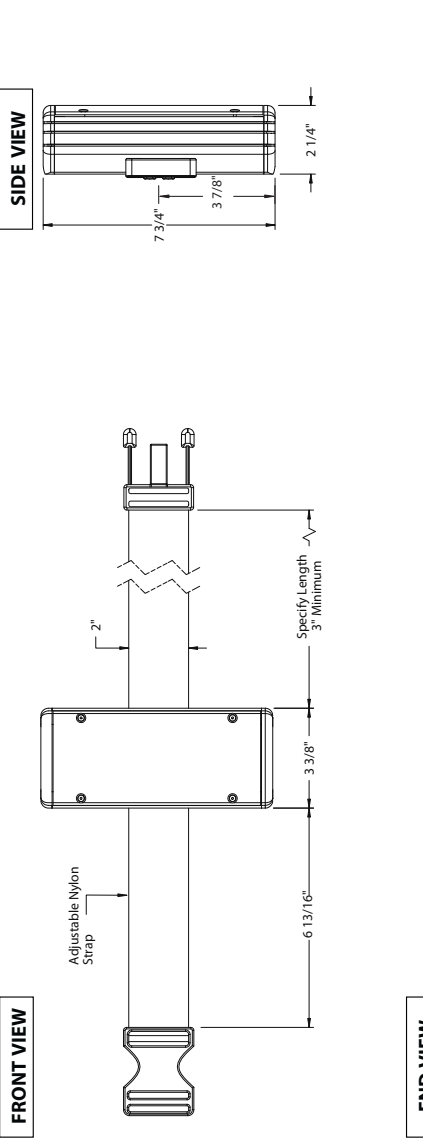


UNIVERSAL POWER MODULE
UPM
 THE POWER OF
BKSSSL
 BUILT TO LAST. LIGHTS THAT LAST.

Constant Current Driver

PROJECT: **PM2RM TREE STRAP™**

TYPE:



Specifications

GreenSource Initiative™
 Metal and packaging components are made from recycled materials. Manufactured using renewable solar energy, produced onsite. Returnable to manufacturer at end of life to ensure cradle-to-cradle handling. Packaging contains no chlorofluorocarbons (CFCs). Use of this product may qualify for GreenSource efficacy and recycling rebates. Consult www.bklighting.com/greensource for program requirements.

Tree Strap™
 Patented mounting system facilitates non-invasive installation. Adjustable nylon strap is mold and mildew resistant and will not hinder tree growth. Optional stainless steel safety cable maintains UPM mounting when nylon strap is disengaged.

Housing
 Copper free, aluminum extrusion with die cast end caps. Surface mounted with flow through back channel to prevent water and debris collection. Machined aluminum cover with countersunk holes for flush hardware installation. Tamper-resistant, captive black oxide stainless steel mounting screws. Front access for ease of installation and inspection. [2] 1/2" NPT female conduit entries per end cap for through wiring.

Finish
 StarGuard™, our exclusive RoHS compliant, 15 stage chromate-free process cleans and conversion coats aluminum components prior to application of Class A TGC polyester powder coating.

Warranty
 5 year limited warranty.

Listings
 NEMA 4X / IP-66 Rated Enclosure. ETL Listed to ANSI/UL Standard 50/50E and Certified to CAN/CSA Standard C22.2 No. 94.1/94.2. RoHS compliant. Made in USA.

USA

 lighting facts
 RoHS

*Teflon is a registered trademark of DuPont Corporation
 Energy Star is a registered trademark of the United States Environmental Protection Agency.

| | | | |
|---------------------|--|---------------------------------|---|
| B-K LIGHTING | 40429 Brickyard Drive • Madera, CA 93638 • USA | 559.438.5800 • FAX 559.438.5900 | www.bklighting.com • info@bklighting.com |
| | SUBMITTAL DATE: 12-21-12 | | DRAWING NUMBER: SUB000795.5 |

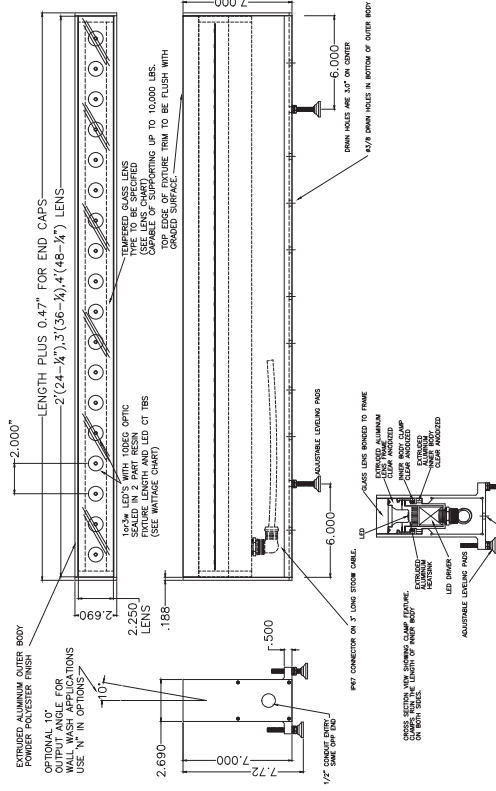
L04



CL4



- . 3W Cree XPE LEDs 2" OC
- . Integral 120-277V power supply
- . Rated IP67 with removable LED modules
- . On board 0-10V dimming
- . One inch thick clear tempered glass lens
- . Symmetric and asymmetric distributions
- . ETL listed wet label
- . Complies with ARRA level III
- . Complies with LM79 and LM 80
- . Driveover rated



CESARINA

Versions Available
 Luminaire with installation kit: PPS plastic structure with AISI 316 stainless steel ring, silicone gasket, four acrylic diffuser lenses (white, blue, green, and red), box for installation on solid surfaces, springs for installation on plaster surfaces or on 10-20mm thick boards.

Light Source
 1 LED module 1W / Constant current 350mA
 Constant current 350mA power supply on request



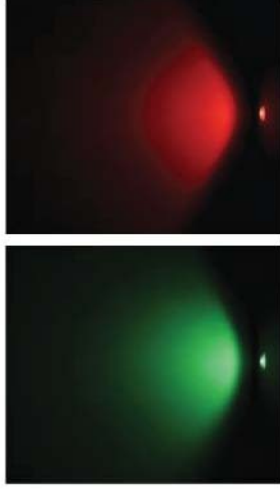
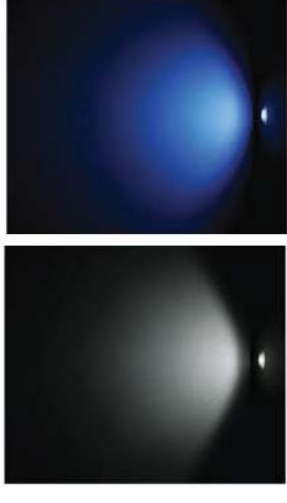
Installation
 The luminaire is already equipped with a piece of bipolar cable for an easy-to-make connection. The only connection allowed is "in series". The only power supply allowed is a constant current I=350mA electronic power supply (up to 8 luminaires each)



- U928600
 1 WHITE LED 1x1W/constant current 350mA
 Remote transformer to be ordered
 T 30°C



- POWER SUPPLIES**
- PPLT00109 For 1-8 FIXTURES
- PPLT100110 For 4-12 FIXTURES



79 Trenton Ave
 Frenchtown, NJ 08825

Tel: 908-996-7710
 Fax: 908-996-7042

sales@designplan.com
 www.designplan.com

L05A

L06

winoLED Project: _____ Type: _____

Qty: _____

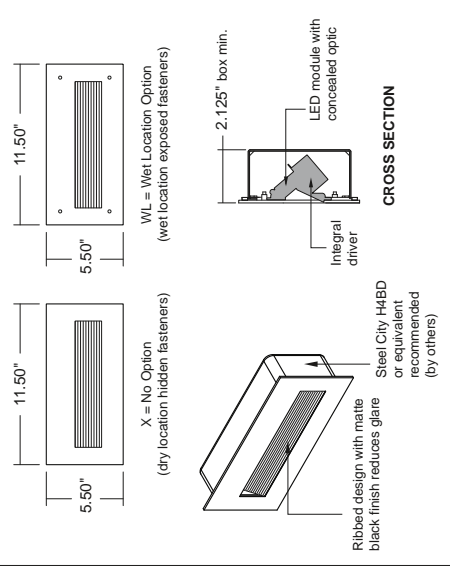
STEP13 • 9 Inch



Wet Shown

STEP13 9 Inch
QUICK FIND #: QF-2107

MOUNTING DETAIL



STEP13 9 Inch is a surface mount step light with a concealed optic. Five LED white temperatures and six LED colors are available.

Distribution: One light distribution pattern available.

Long: For large area illumination.

Construction: Die-cast LED module with solid aluminum, brass, or stainless steel faceplates.

Mounting: Luminaire is mounted to a standard multi-gang switch box (supplied by others) with four fasteners. Steel City H4BD or equivalent (by others) recommended.

Integral Driver: Integral drivers available for 120V-277V AC in both dimming and non-dimming versions.

Finish: Recessed surfaces have a ribbed design with a matte black finish to reduce glare. Faceplates in natural metal finishes have protective clear top coat. Faceplates in painted are finished with a two-part wet paint system. Primer only option allows for field painting.

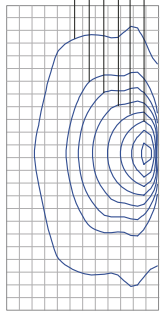
Dimming: True 0-100% dimming is compatible with 0V-10V fluorescent-type dimmer.

Power Consumption: Non-dimming unit consumes 8.04W. Dimming unit consumes 18W.

ETL Listed: Dry Location, Wet Location optional

Note: Winona Lighting reserves the right to make design changes without prior notice.

Typical Distribution Based on 30K
Grid in 1' increments



Lumen Output at 30K

| Size | Distribution | Lumens | Watts | LPW |
|--------|--------------|--------|-------|------|
| 9 Inch | Long | 310 | 8.04 | 38.6 |

PRODUCT SPECIFICATION

| LED | STEP13 | 9 | L | — | — | — | — | — | — | — | — |
|----------------------|------------------------|--------------------------------------|---------------------------------|---|--|--|---|--|---|---|---|
| SOURCE LED | MOUNT STEP13 | FACEPLATE 9 - 9 inch | DISTRIBUTION L - long | LED CODE 27K - ANS-hinned 2700K 30K - ANS-hinned 3000K 35K - ANS-hinned 3500K 40K - ANS-hinned 4000K 50K - ANS-hinned 5000 | VOLTAGE Non-Dimming ND120V - 277V Dimming DM120V - 277V * | FINISH Natural Metal Finishes BAL - brushed aluminum BB - brushed brass BSS - brushed stainless steel PB - polished brass PSS - polished stainless steel CMF - custom metal finish (consult factory) | OPTIONS X - no options WL - wet location | SPECIAL STD - standard MOD - modified | | | |
| Modification: | | IES report available on the website. | | Painted Finishes ABS - antique brass paint BBP - brushed brass paint LBPS - light bronze paint smooth LSP - light silver paint PGP - pale gold paint SGB - semi-gloss black paint SGW - semi-gloss white paint PRM - primer only CPF - custom paint finish (consult factory) | | * 0-10V dimmer required (by others) | | | | | |

Visit www.winonalighting.com for the most complete and current information.

winona
LIGHTING
A **Acuity** Brands Company

3760 west fourth street • winona, minnesota 55987 • 507 - 454 - 5113 • fax: 507 - 452 - 8528
www.winonalighting.com

ETL
All Finishes ETL listed, USA and Canada

Revised: 09-11-12 Page 1 of 2

L06

TUKWILA LIBRARY | KING COUNTY LIBRARY SYSTEM

Wall luminaires with one-sided light output

Type: _____
BEGA Product: _____
Project: _____
Voltage: _____
Color: _____
Options: _____
Modified: _____

Housing: Constructed of die-cast aluminum end caps and an extruded, thick walled aluminum body. The end caps and body are internally welded to provide a seamless, waterproof lamp housing. The housing is secured to a mounting bracket by two stainless steel, captive fasteners. The mounting bracket is secured directly to the wall over a BEGA 537 recessed outlet box. All aluminum used in the construction is marine grade and copper free.

Enclosure: The faceplate is constructed of extruded aluminum profiles, cut and welded together. The faceplates are secured to bottom of the lamp housing body with ten flush, captive, stainless steel fasteners. The bottom diffuser is matte safety glass.

Electrical: Lampholders; Fluorescent T5 HO, G5 miniature bi-pin. Ballasts; integral electronic, universal voltage 120V through 277V, minimum start temperature of -20°. Standard T5 lamping available upon request. Consult factory.

Finish: Available in four standard BEGA colors: Black (BLK); White (WHT); Bronze (BRZ); Silver (SLV). To specify, add the appropriate suffix to catalog number. Custom colors supplied on special order.

UL listed, suitable for wet locations. Protection class IP 65.



These luminaires mount over a custom BEGA recessed box. This box can be shipped ahead of the luminaire.



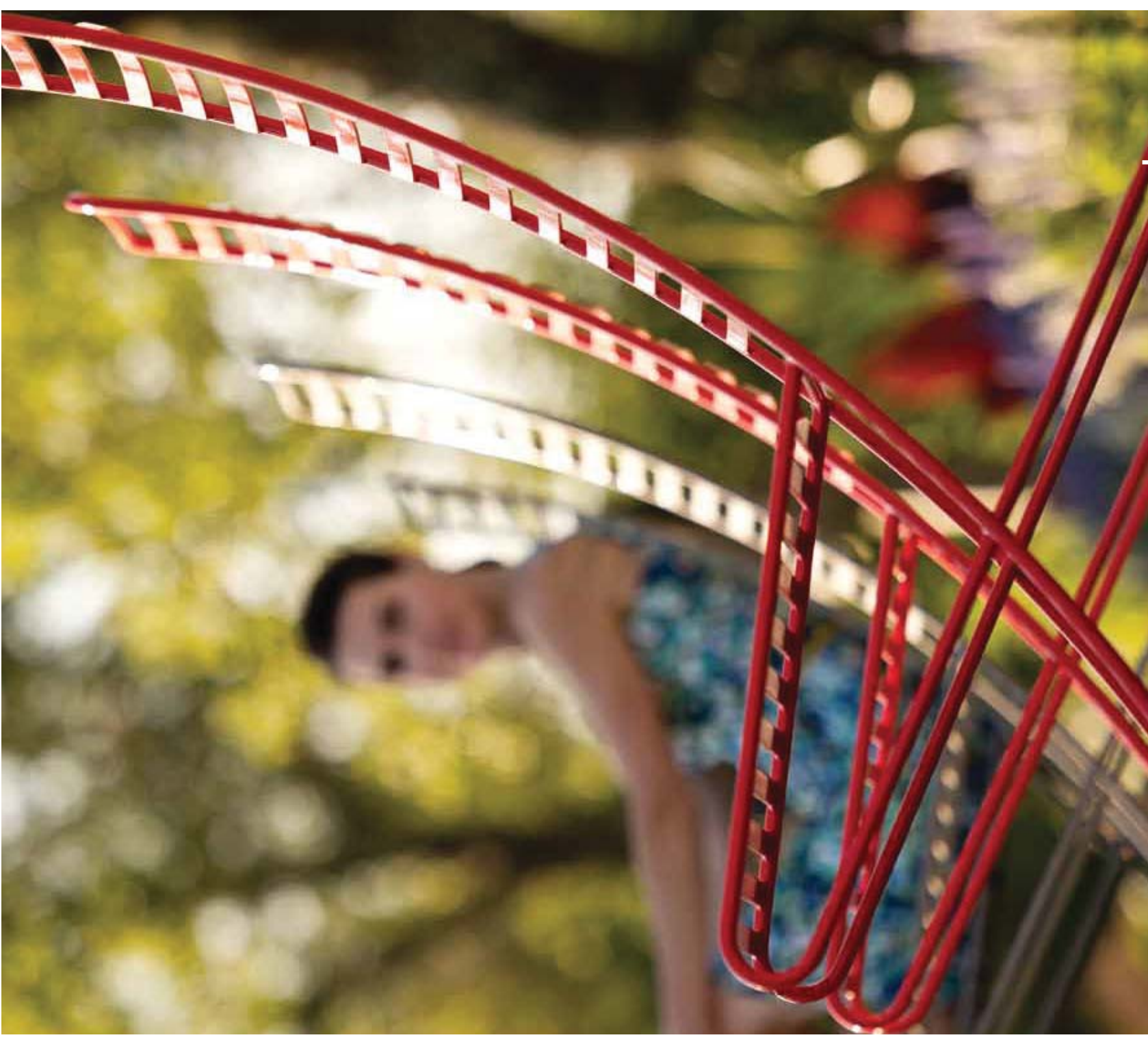
One-sided light output

| Lamps | Lumen | A | B | C | Wiring box* |
|------------------|-----------------|------|-----|-------|-------------|
| 4405P.537 | 1 54 W FL T5 HO | 5000 | 47% | 4 1/4 | 537 |

*Small opening wiring box included.

BEGA - US 1000 BEGA Way, Carpinteria, CA 93013 (805)684-0533 FAX (805)566-9474 www.bega-us.com
©copyright BEGA-US 2012 Updated 3/12

F04



Parc Lounge raises the Parc Centre collection to new heights

Parc Lounge and its companion ottoman support a relaxed attitude in great style. An elegant sweeping back curve provides just the right balance between lounging and upright positions, so sitters can lean back and still carry on a conversation, read or work on a laptop. The ottoman scores a triple play as footrest, seat and table. These new additions to the Parc Centre collection of movable outdoor furniture by designer John Rizzi are visually light, structurally strong and very versatile.





Garden party tasteful...
college campus tough



SITE FURNISHINGS

Parc Centre chairs, tables, lounge and ottoman comfortably support social activities in formal and informal settings alike. Steel construction coupled with economy of form make them nimble enough to move around and heavy enough to hold their ground. Sled bases are stable on grass, gravel or hard surfaces. Seats have a pleasing bounce. Chairs, lounges and ottomans stack.





CAPITOL™ BIKE RACK

PRODUCT DATA



FORMS+SURFACES®



CAPITOL™ BIKE RACK



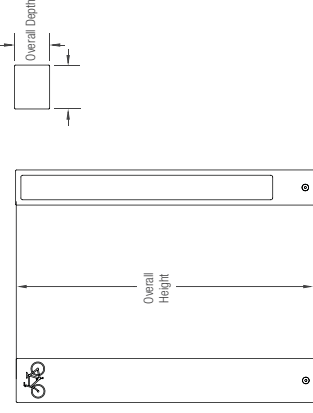
PRODUCT DATA

The Capitol Bike Rack's solid, corrosion-resistant cast aluminum body provides the strength necessary to stand up to continuous use while its simple, space-saving design allows it to engage with its surrounding environment as much or as little as desired. With a design perfect for cityscapes and other contemporary architectural settings, the Capitol Bike Rack is a solution for environments of all types.

MATERIAL & FINISHES

| MATERIAL | FINISHES | INSTALLATION | MAINTENANCE |
|---|---|--|--|
| <ul style="list-style-type: none"> Body is made of corrosion-resistant cast aluminum with powdercoat finish. | <ul style="list-style-type: none"> Standard colors are Aluminum Texture and Slate Texture; optional colors from the F+S color chart and custom RAL colors are available for an upcharge. Bike logo comes standard without color. Custom colors are available for an upcharge. Due to the inherent nature of metal castings, gloss powdercoats are not offered for cast components. | <ul style="list-style-type: none"> Capitol Bike Racks must be surface mounted. Anchors and stainless steel screws are included. | <ul style="list-style-type: none"> Metal surfaces can be cleaned as needed using a soft cloth or brush with warm water and a mild detergent. Avoid abrasive cleaners. |

NOMINAL DIMENSIONS



| OVERALL LENGTH | OVERALL DEPTH | OVERALL HEIGHT | WEIGHT |
|----------------|---------------|----------------|------------------|
| 5" (127 mm) | 4" (102 mm) | 34" (864 mm) | 25 lbs (11.4 kg) |

ENVIRONMENTAL CONSIDERATIONS

- Please refer to the Capitol Bike Rack Environmental Data Sheets for detailed environmental impact information.
- Capitol aluminum casting has up to 95% recycled content and is fully recyclable.
- Standard powdercoat finishes are no-VOC; non-standard powdercoat finishes are no- or low-VOC, depending on color.
- Low maintenance.

NET PRICING AND ORDERING INFORMATION (pricing does not include freight)

| MODEL | DESCRIPTION | NET PRICE |
|-------|--|-------------------------------------|
| SKCAP | Capitol Bike Rack | \$429 |
| | Optional powdercoat color from Forms+Surfaces standard color chart | + \$200 per color/per order |
| | Custom RAL powdercoat color | + minimum \$500 per color/per order |

TO ORDER SPECIFY: quantity, model, powdercoat color for body casting and bike logo color if desired.

LEAD TIME: 6 to 8 weeks. Shorter lead times may be available upon request. Please contact us to discuss your specific timing requirements.

T 800.451.0410 | www.forms-surfaces.com

© 2013 Forms+Surfaces® | All dimensions are nominal. Specifications and pricing subject to change without notice. For the most current version of this document, please refer to our website at www.forms-surfaces.com.

page 1 of 2 | Rev. 02-05-13

FORMS+SURFACES®



CAPITOL™ BIKE RACK



PRODUCT DATA

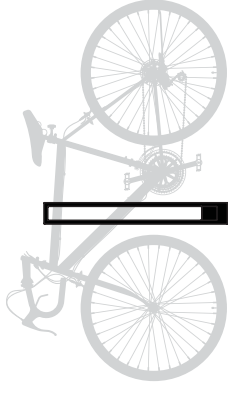
CONFIGURATION OPTIONS

The Capitol Bike Rack was designed to allow for a multitude of configuration options to meet your individual needs. Please note that for optimal performance, Forms+Surfaces recommends a 30" center-to-center placement (see diagrams below for more details).

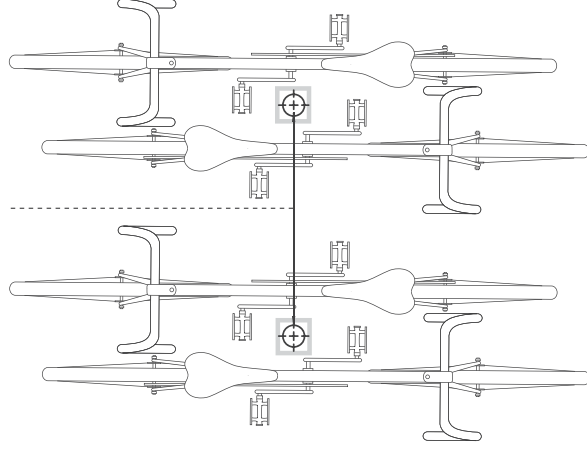
INSTALLATION & MAINTENANCE

| MATERIAL | FINISHES | INSTALLATION | MAINTENANCE |
|---|---|--|--|
| <ul style="list-style-type: none"> Body is made of corrosion-resistant cast aluminum with powdercoat finish. | <ul style="list-style-type: none"> Standard colors are Aluminum Texture and Slate Texture; optional colors from the F+S color chart and custom RAL colors are available for an upcharge. Bike logo comes standard without color. Custom colors are available for an upcharge. Due to the inherent nature of metal castings, gloss powdercoats are not offered for cast components. | <ul style="list-style-type: none"> Capitol Bike Racks must be surface mounted. Anchors and stainless steel screws are included. | <ul style="list-style-type: none"> Metal surfaces can be cleaned as needed using a soft cloth or brush with warm water and a mild detergent. Avoid abrasive cleaners. |

SIDE DETAIL

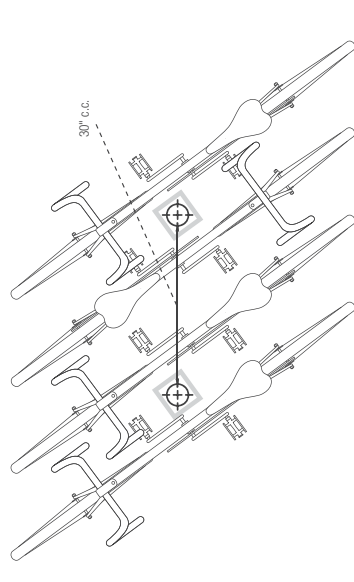
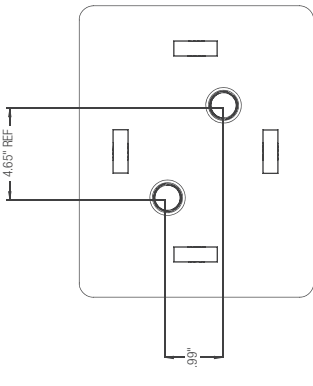


30" c.c.



CONFIGURATION OPTION A

MOUNTING / HARDWARE DETAIL



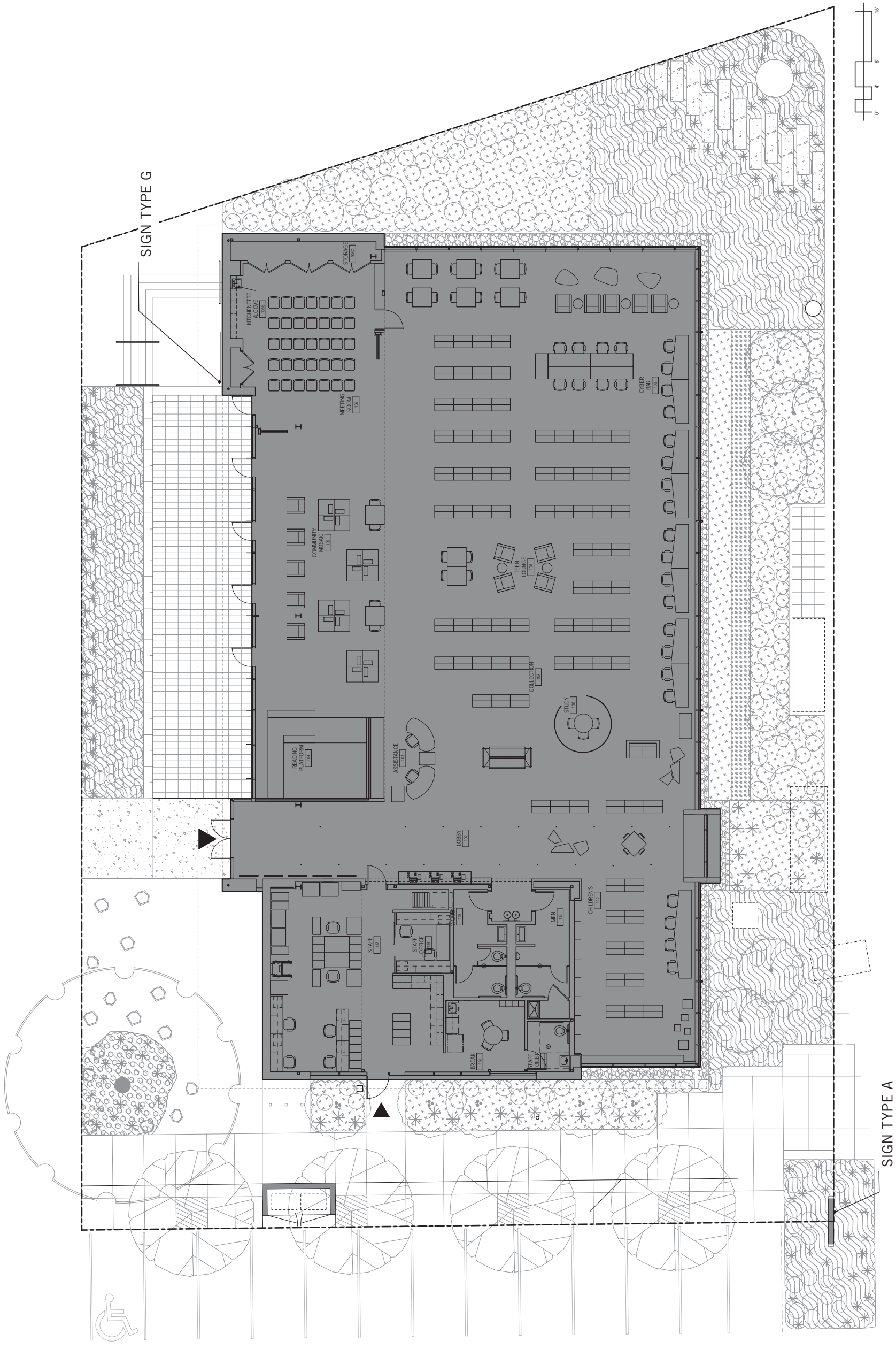
CONFIGURATION OPTION B

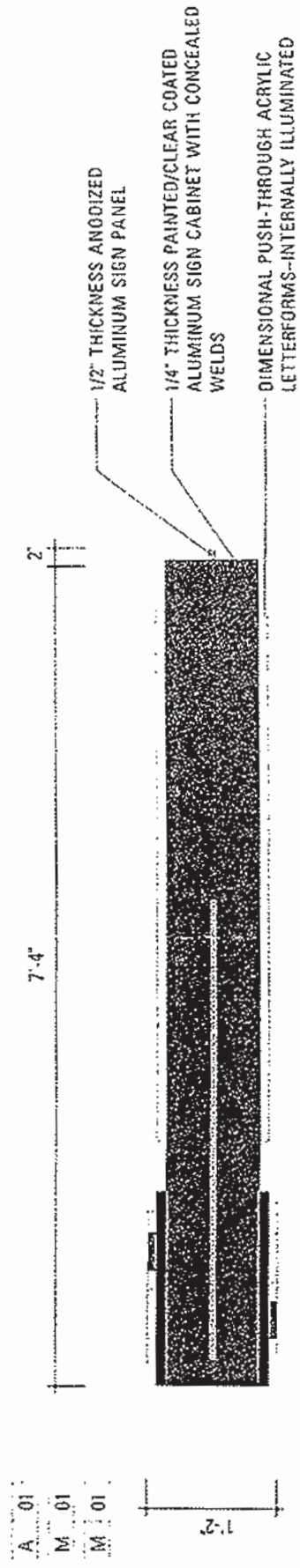
T 800.451.0410 | www.forms-surfaces.com

© 2013 Forms+Surfaces® | All dimensions are nominal. Specifications and pricing subject to change without notice. For the most current version of this document, please refer to our website at www.forms-surfaces.com.

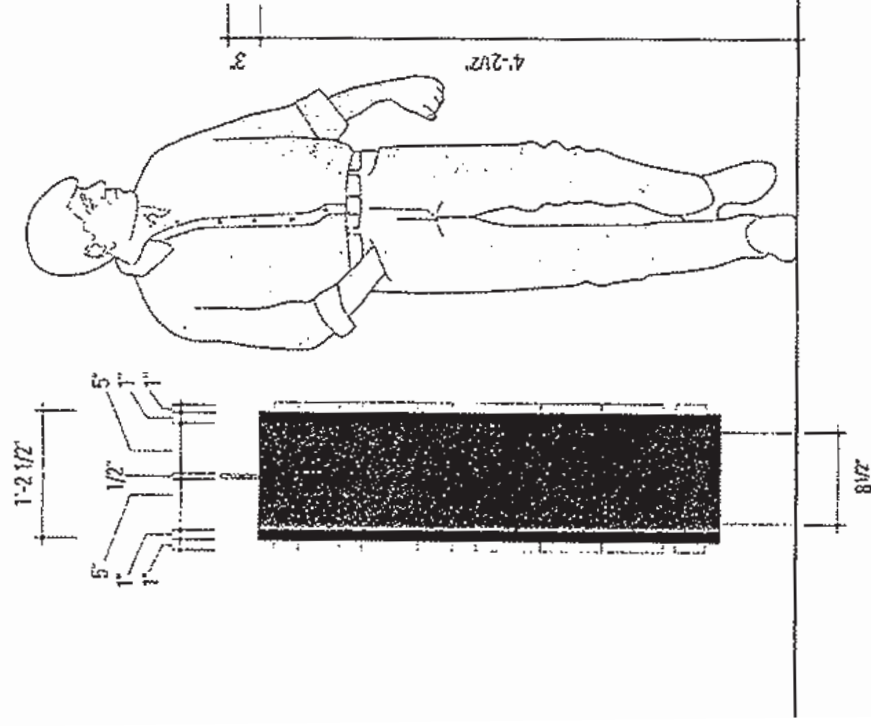
page 2 of 2 | Rev. 02-05-13

FORMS+SURFACES®

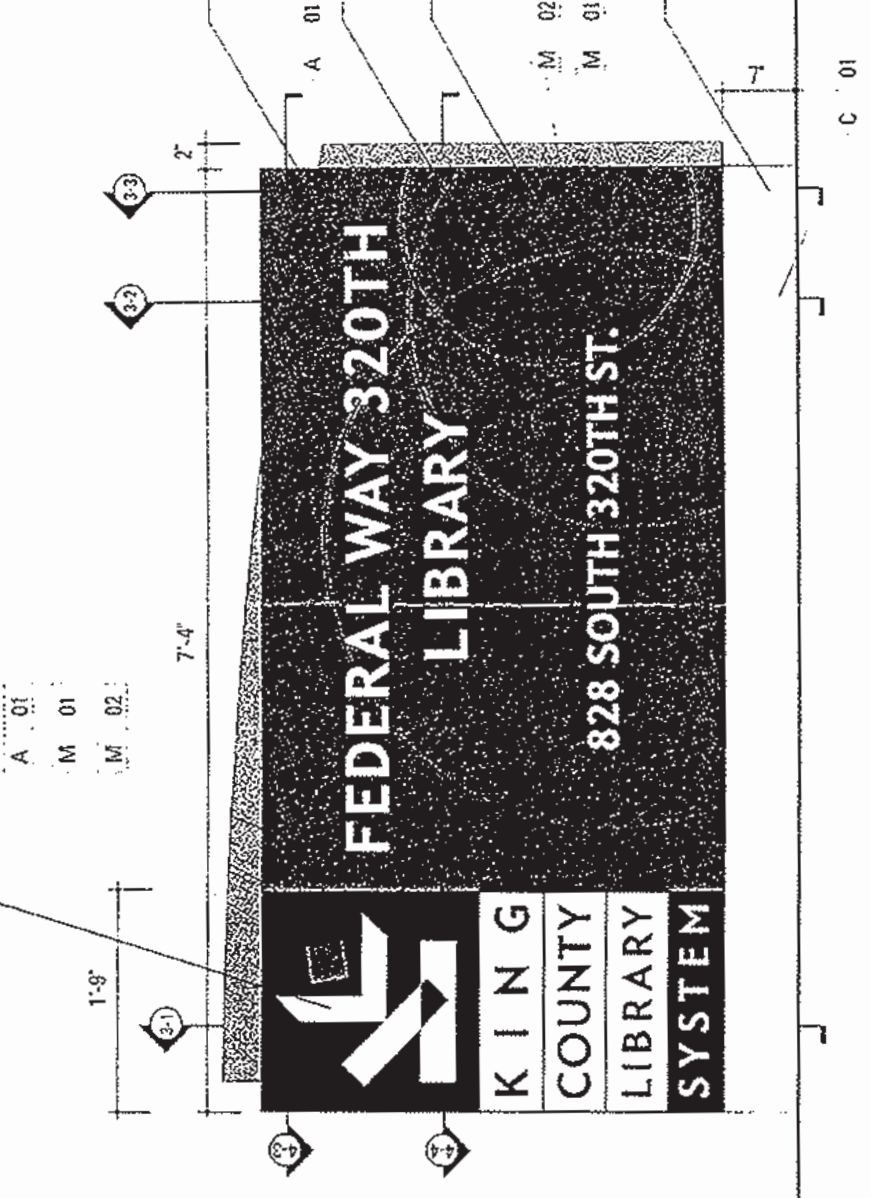




03 SIGN TYPE A FULL PLAN VIEW
SCALE: 3/4"=1'-0"



01 SIGN TYPE A SIDE ELEVATION
SCALE: 3/4"=1'-0"



02 SIGN TYPE A FRONT ELEVATION
SCALE: 3/4"=1'-0"

SIGN TO BE CONTROLLED BY A TIMER LOCATED INSIDE EACH LIBRARY. TIMER TO BE USED IS: INTERMAX, ET70415CR

14000
King County Library System
Exterior Signage

GIRVIN | Environmental Graphic Design
Girvin, Inc.
1601 Second Avenue
Seattle, Washington 98101
P: 206.674.7605
F: 206.674.7999
www.girvin.com

NOTE:
NOT FOR CONSTRUCTION.
THESE DRAWINGS ARE
FOR CONCEPT ONLY.

Open
Approved
Record

SIGN TYPE
A

01
01



SAMMAMISH LIBRARY

DIMENSIONAL LETTERFORMS
FASTENED TO BUILDING FACADE
VIA 1/2" STAND-OFF POSTS.
EXTERIOR RATED PAINT FINISH

01 G ELEV.-NON-ILLUMINATED
SCALE: 1"=1'-0"



02 G ELEV.-NON-ILLUMINATED
SCALE: 1"=1'-0"

SIGN TYPE G OCCURS AT THE
FOLLOWING LOCATIONS:

- COVINGTON LIBRARY (1 SET)
- WORTH BEND LIBRARY (1 SET)
- REDMOND REGIONAL LIBRARY (2 SETS)
- SAMMAMISH LIBRARY (1 SET)
- RICHMOND BEACH LIBRARY (1 SET)

DATE: King County Library System Exterior Signage

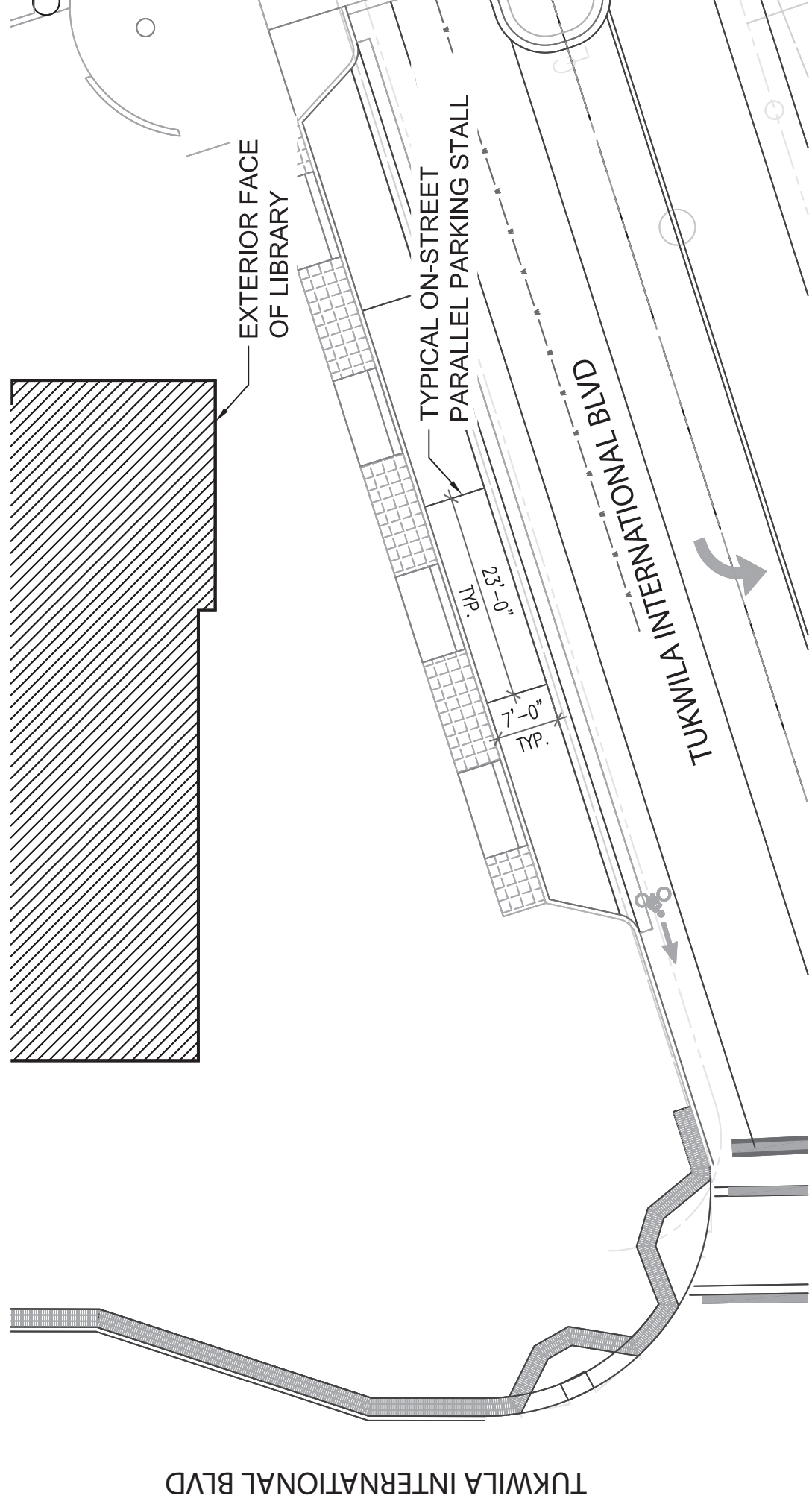
GIRVIN | Environmental Graphic Design: Girvin, Inc. 1601 Second Avenue Seattle, Washington 98101 P: 206.674.7808 F: 206.674.7909 www.girvin.com

NOTE:
NOT FOR CONSTRUCTION.
THESE DRAWINGS ARE
FOR CONCEPT ONLY.

DATE: 11/13/18
APP'D: [Signature]
DESIGN: [Signature]

SIGN TYPE
G

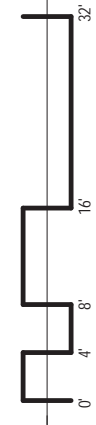
DATE: 11/13/18
SCALE: 1"=1'-0"
DRAWN: [Signature]

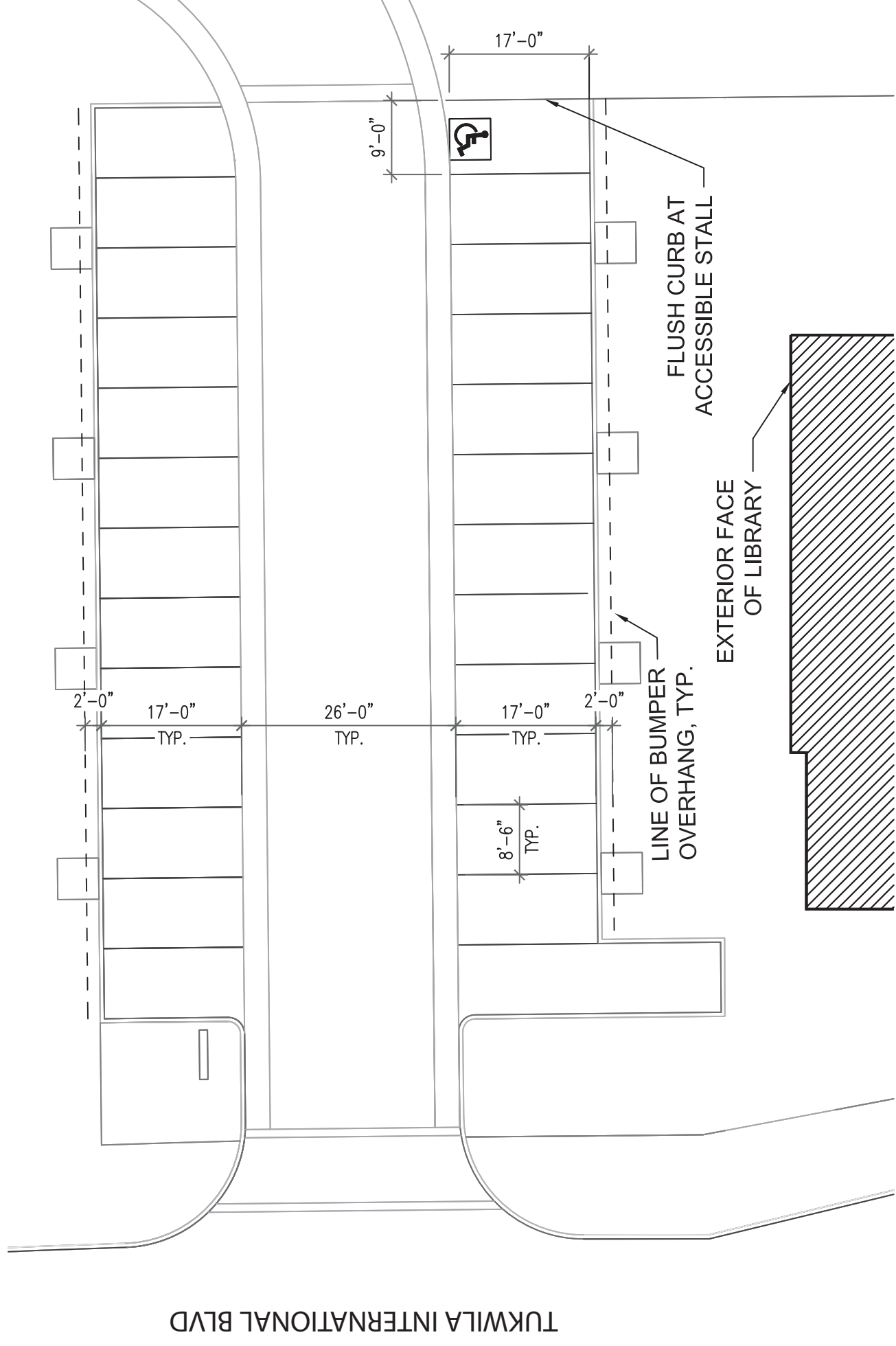


TUKWILA INTERNATIONAL BLVD

DIMENSIONED PARKING PLAN | ON-STREET PARALLEL PARKING

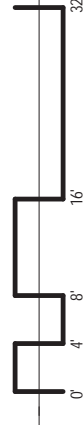
1/16" = 1'-0"





DIMENSIONED PARKING PLAN | STANDARD AND ACCESSIBLE OFF-STREET PARKING STALLS

1/16" = 1'-0"





Legend

| | |
|--|---------------------------------|
| | LIMIT |
| | LIMIT OF CONSTRUCTION |
| | EX CONTOUR (INDEX) |
| | EX CONTOUR |
| | EX CURB AND GUTTER |
| | EX STORM DRAINAGE |
| | EX UNDERGROUND TOWER |
| | EX WATER MAIN |
| | EX GAS MAIN |
| | PROPOSED CURB (BY OTHERS) |
| | PROPOSED STORM LINE (BY OTHERS) |

Call before you Dig
 8-1-1 or
 1-800-424-5555
UNDERGROUND SERVICE UTILITIES

SCALE 1"=10'

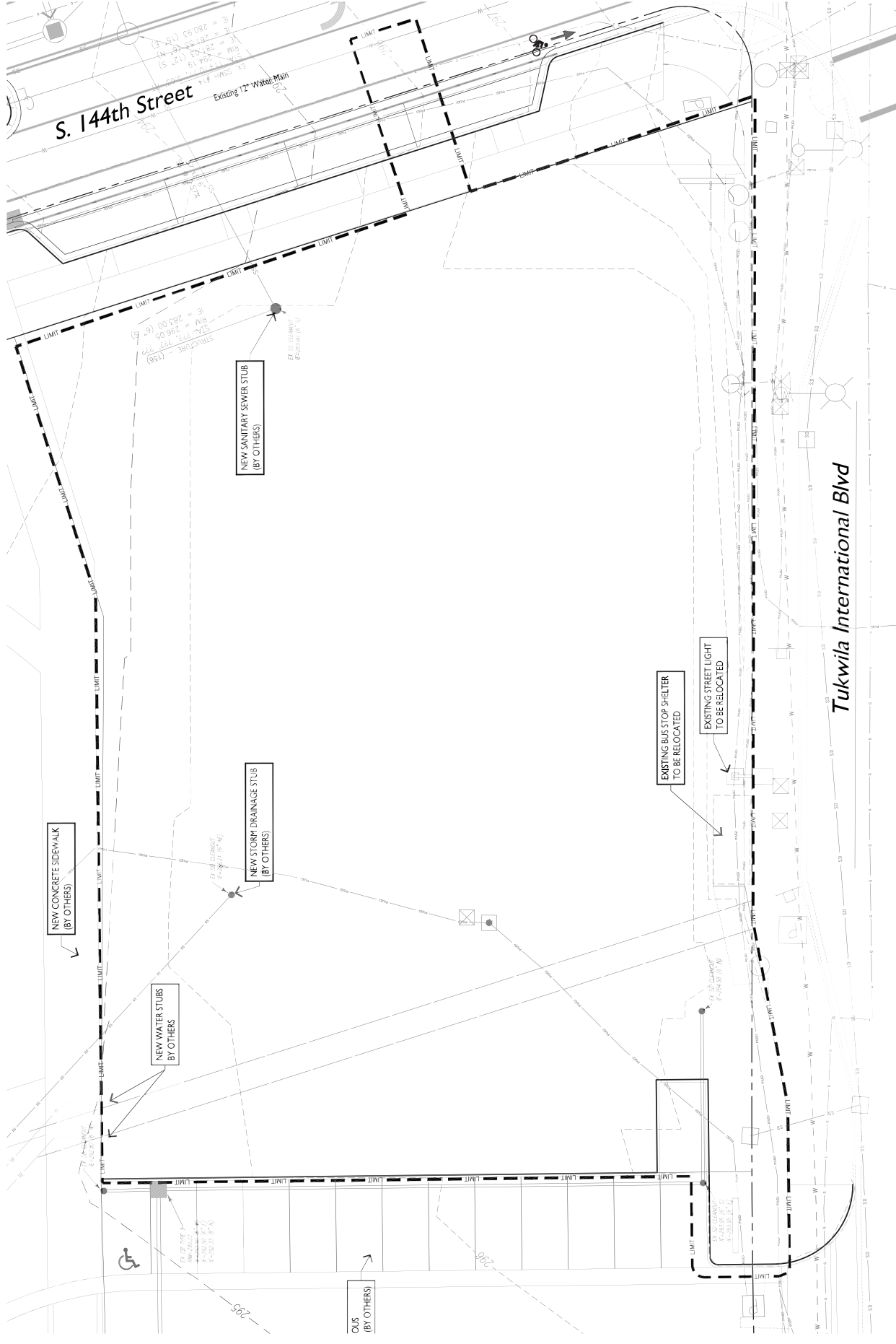
THIS DRAWING IS A COPY OF A CAD FILE PREPARED BY COUGHIN PORTER LUNDEN AND HAS BEEN EDITED TO REFLECT ANTICIPATED FIELD CONDITIONS. THE CONTRACTOR SHALL BE RESPONSIBLE FOR VERIFYING THE LOCATION, DIMENSIONS AND DEPTHS OF ALL EXISTING UTILITIES PRIOR TO CONSTRUCTION. LOCATIONS OF SAID UTILITIES AS SHOWN ON THESE PLANS ARE BASED UPON UNVERIFIED DESIGN INFORMATION FROM THE TUKWILA VILAGE PROJECT AND ARE SUBJECT TO VARIATION.

PERKINS + WILL
 1275 Second Avenue
 Suite 2000
 Seattle, WA 98101
 Phone: 206.461.8000
 www.perkinswill.com

**Tukwila Library
 King County Library System**

14242 Tukwila International Boulevard
 Tukwila, WA 98168

Company Name
 Address Line 1
 Address Line 2
 City
 State
 Zip



Revisions

| NO. | ISSUE | DATE |
|--------------------------|------------|------|
| Sheet Information | | |
| Date | 3/29/2013 | |
| Job Number | 161028.000 | |
| Drawn | LPL | |
| Checked | KBS | |
| Approved | JNP | |
| Title | | |

EXISTING CONDITIONS PLAN

Sheet
C00-01

Copyright © 2013 Perkins+Will

R2/2012 12:14:00 PM
 \\SRV610\1\2010\105CP-008\CAD\TFL_Base.dwg



R2/2012 12:14:00 PM \\SRV\BIC\1\2010\F103C\F-008\CAD\TFL_Base.dwg

- Legend**
- LIMIT
 - LIMIT OF CONSTRUCTION
 - INLET PROTECTION
 - TREE PROTECTION
 - FENCE PROTECTION
 - TEMPORARY FENCE
 - BOTTOM OF EXCAVATION
 - EXCAVATION CUT SLOPE
 - EX CONTOUR (NEED)
 - EX CONTOUR
 - EX CURB AND GUTTER
 - EX STORM URNAGE
 - EX UNDERGROUND POWER
 - EX WATER MAIN
 - EX GAS MAIN
 - PROPOSED CURB (BY OTHERS)
 - PROPOSED SIGN LINE (BY OTHERS)
 - REMOVE EX CONCRETE
 - SWIMPOU

SCALE 1"=10'

Call before you Dig
8-1-1 or 1-800-424-5555
UNDERGROUND SERVICE (USA)

Earthwork Quantities

EXCAVATION 1000 CY
FILL 500 CY

NOTE: THE QUANTITIES SHOWN ARE PRELIMINARY ESTIMATES ONLY AND INTENDED FOR MUNICIPAL PERMITTING AND REVIEW FEES. THE CONTRACTOR SHALL OBTAIN THESE QUANTITIES, THEY ARE NOT TO BE USED BY THE CONTRACTOR AS A BASIS FOR ANY CONTRACTUAL INFORMATION. THE CONTRACTOR SHALL PREPARE THEIR OWN EARTHWORK QUANTITIES BASED ON THE INFORMATION PROVIDED IN THIS DRAWING. QUANTITIES SHALL BE LIMITED TO THOSE LISTED IN THIS DRAWING, SPECIFICATIONS, AND THE GEOLOGICAL REPORT.

Dust Control

CONTRACTOR SHALL OBTAIN AS NEARBY PROPERTY ADJACENT TO THE SITE. THE CONTRACTOR SHALL OBTAIN AS NEARBY PROPERTY ADJACENT TO THE SITE. THE CONTRACTOR SHALL OBTAIN AS NEARBY PROPERTY ADJACENT TO THE SITE.

PERKINS + WILL

1275 Seventh Avenue
Seattle, WA 98101
206.461.4600
www.perkinswill.com

Tukwila Library

King County Library System

14242 Tukwila International Boulevard
Tukwila, WA 98168

Company Name
Address Line 1
Address Line 2
City, State, Zip
Phone Number



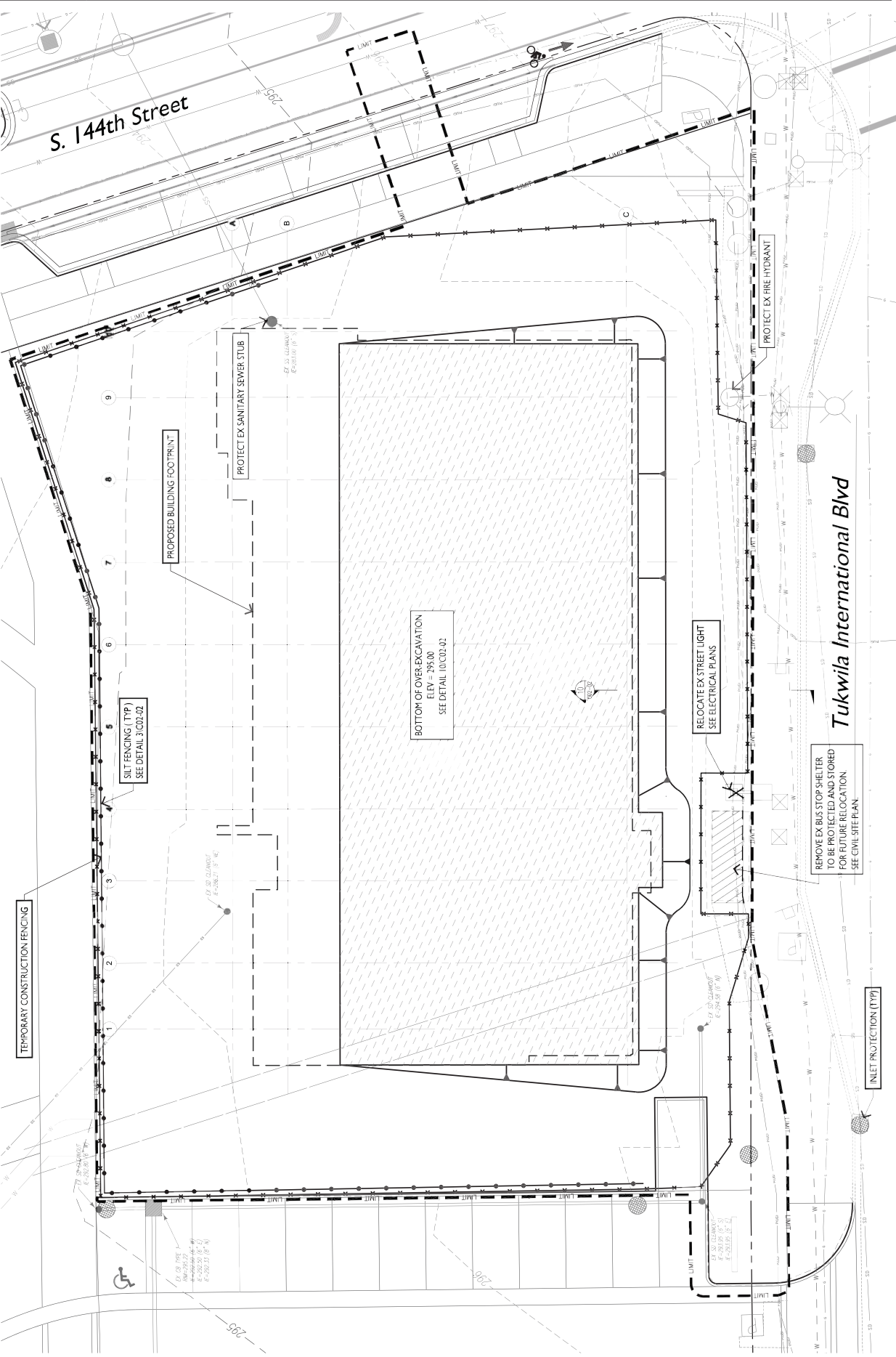
Revisions

| NO. | ISSUE | DATE | Title |
|--------------------------|------------|------|-------|
| Sheet Information | | | |
| Date | 3/29/2013 | | |
| Job Number | 161028.000 | LPL | |
| Drawn | | KBS | |
| Checked | | JNP | |
| Approved | | | |

SITE PREPARATION PLAN

Sheet
C01-01

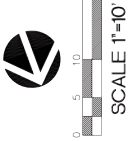
Copyright © 2013 Perkins+Will





Legend

| | |
|--|------------------------|
| | LIMITS OF CONSTRUCTION |
| | EX CONDUCTOR INDEX |
| | EX CONDUCTOR |
| | CONCRETE PAVEMENT |
| | BUILDING |
| | FOOTING DRAIN |
| | STORM DRAINAGE PIPE |
| | WATER SERVICE |
| | SEWER SIDE SERVICE |



Call before you Dig.
8-1-1 or 1-800-424-5555
UNDERGROUND SERVICE UTILITIES

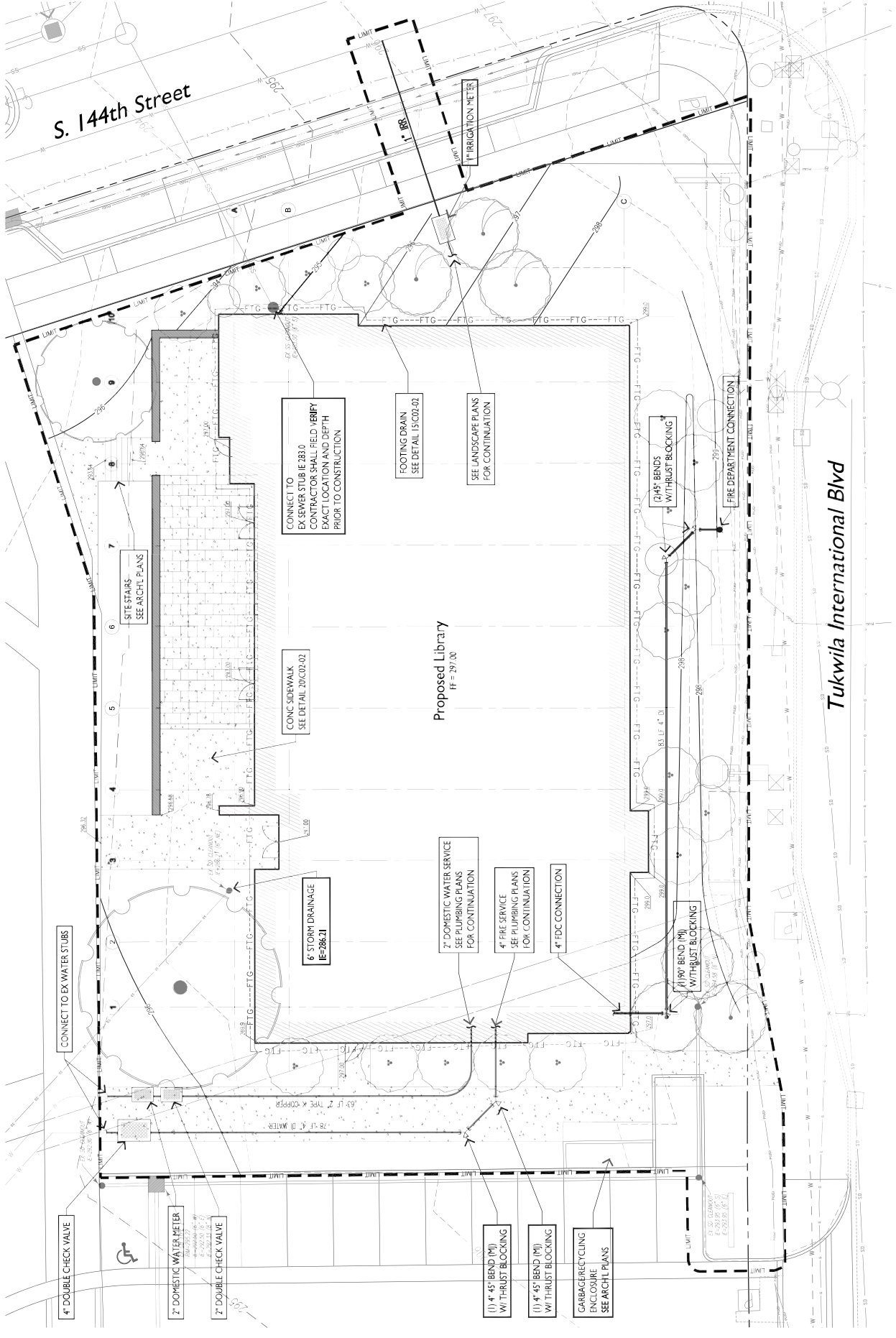
PERKINS + WILL

1271 Second Avenue
Suite 2000
Seattle, WA 98101
Tel: 206.461.4600
www.perkinswill.com

**Tukwila Library
King County Library System**

14242 Tukwila International Boulevard
Tukwila, WA 98168

Company Name
Address Line 1
Address Line 2
City
State
Zip



Revisions

| NO. | ISSUE | DATE |
|--------------------------|------------|------|
| Sheet Information | | |
| Date | 3/29/2013 | |
| Job Number | 161028.000 | |
| Drawn | LPL | |
| Checked | KBS | |
| Approved | JNP | |
| Title | | |

CIVIL SITE PLAN

Sheet
C02-01

Copyright © 2013 Perkins+Will



10/24/2013 4:30:58 PM
 C:\projects\1028 Tukwila\Arch\Arch

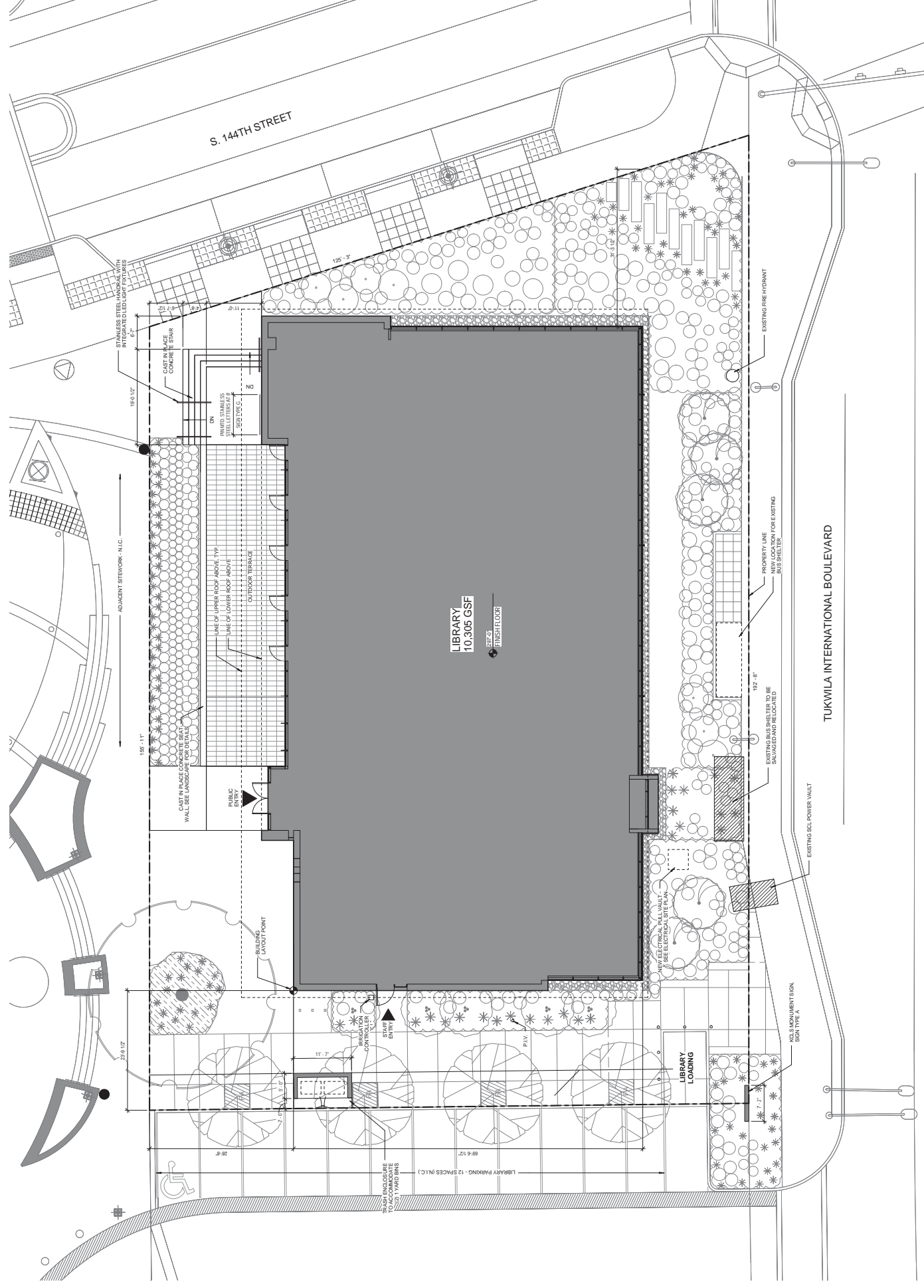
- NOTES:**
1. REFER TO CIVIL DRAWINGS FOR ADDITIONAL SITE INFORMATION.
 2. SEE LANDSCAPE DRAWINGS FOR ADDITIONAL INFORMATION ON LANDSCAPE FEATURES, PAVING DETAILS, AND PLANT TYPES.
 3. SEE ELECTRICAL SITE PLAN FOR EXTERIOR LIGHT FIXTURES.

**PERKINS
 + WILL**

1275 Second Avenue
 Suite 400
 Seattle, WA 98101
 T 206.371.1000
 F 206.371.1000
 www.perkinswill.com

**Tukwila
 Library**
 14300 Tukwila International
 Boulevard
 Tukwila, WA 98168

**King County
 Library
 System**



| NO. | REVISION | DATE |
|-----|----------|------|
| | | |
| | | |
| | | |
| | | |
| | | |
| | | |
| | | |
| | | |
| | | |
| | | |

Revisions

| NO. | REVISION | DATE |
|-----|----------|------|
| | | |
| | | |
| | | |
| | | |
| | | |
| | | |
| | | |
| | | |
| | | |
| | | |

Revisions

SITE PLAN

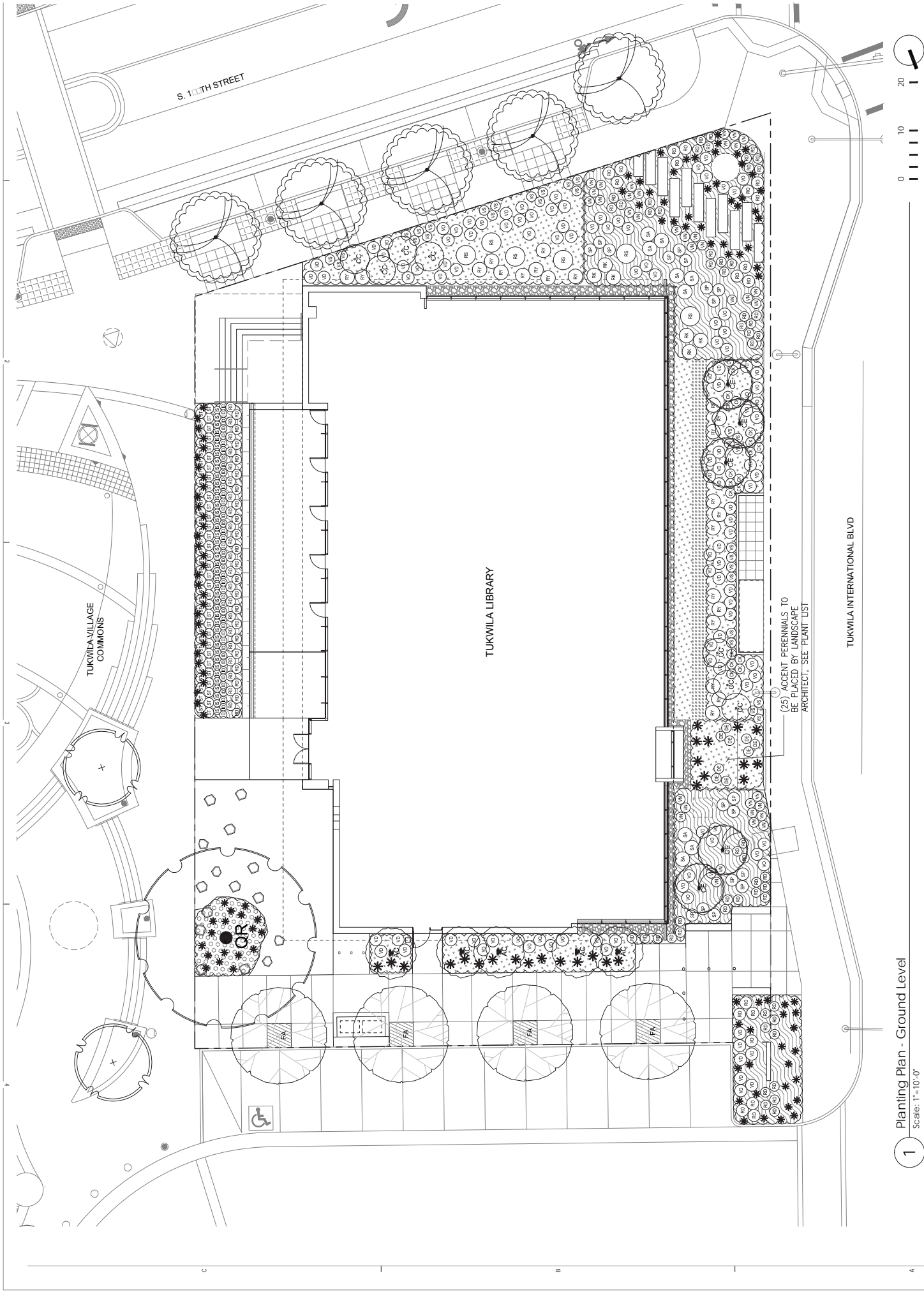
Sheet
A01-01

Copyright © 2013 Perkins+Will

1 ARCHITECTURAL SITE PLAN
 1/8" = 1'-0"



2/11/2013 12:10:17 PM
1301161028 TUKWILA LIBRARY SYSTEM



1 Planting Plan - Ground Level
Scale: 1" = 10'-0"

**PERKINS
+WILL**
1221 Second Avenue
Suite 200
Seattle, WA 98101
Tel: 206.461.4811
www.perkinswill.com

**Tukwila
Library**
**King County
Library
System**

14242 Tukwila International
Boulevard
Tukwila, WA 98168
1000.000.0000
1000.000.0000

KAREN KIEST
landscape architects
111 W. John St., Suite 305
Seattle WA 98119
tel: 206.323.6032



WASHINGTON
LICENSED
LANDSCAPE ARCHITECT
KAREN KIEST
LICENSE NO. 850
EXPIRES ON 12/10/2013

Revisions

| NO | ISSUE | DATE |
|-------------------|------------|------|
| Sheet Information | | |
| Date | 7/27/2013 | |
| Job Number | 161028.000 | |
| Drawn | KM | |
| Checked | KK | |
| Approved | KK | |
| Title | | |

**LANDSCAPE
PLANTING PLAN -
GROUND LEVEL**

Sheet
L03-01

Copyright © 2011 Perkins+Will

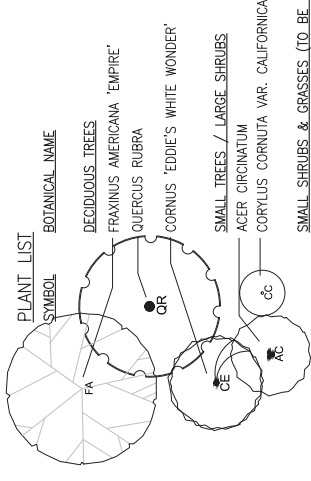


2/11/2013 12:10:17 PM
 151028 TUKWILA LIBRARY SYSTEM

PLANTING NOTES:

1. ALL PLANTING AREAS TO BE IRRIGATED WITH FULLY AUTOMATIC, IN-GROUND IRRIGATION SYSTEM. SEE SHEET L02-01 FOR IRRIGATION ZONE PLAN.
2. ALL PLANTING AREAS, EXCEPT AT GREEN ROOF, SHALL HAVE MIN. 8" DEPTH OF TOP SOIL AS PART OF SOIL PREPARATION PRIOR TO PLANTING.
3. ALL PLANTING AREAS, EXCEPT WHERE LAWN OCCURS & AT GREEN ROOF, SHALL HAVE MIN. 2" DEPTH OF BARK MULCH.
4. ALL AREAS WITHIN LIMIT OF DISTURBANCE SHALL BE RESTORED.
5. PROVIDE GROUNDCOVERS IN ALL SHRUB PLANTING AREAS. GROUNDCOVERS SHALL BE SPACED USING A TRIANGULAR PATTERN, 18" O.C. OR AS NOTED.
6. ADJUST TREE LOCATION AS NECESSARY TO BE 5' CLEAR FROM CENTER LINES OF UNDERGROUND UTILITIES.
7. PER CITY OF TUKWILA (COT) STANDARD, ALL PLANTS SHALL MEET THE CURRENT AMERICAN STANDARD FOR NURSERY STOCK.
8. PER COT STANDARD, LIVING GROUNDCOVER SHALL COVER 90% OF LANDSCAPED AREAS WITHIN (3) YEARS.

PLANT LIST



| SYMBOL | BOTANICAL NAME | COMMON NAME | SIZE | CONDITION | SPACING |
|--------|---|--------------------------------|---------------------------------|--------------------|----------|
| FA | DECIDUOUS TREES | | | | |
| FA | FRAXINUS AMERICANA 'EMPIRE' | EMPIRE ASH | 2" CAL. | | PER PLAN |
| FA | QUERCUS RUBRA | RED OAK | 5" CAL. | B&B | PER PLAN |
| FA | CORNUS 'EDDIE'S WHITE WONDER' | 'EDDIE'S WHITE WONDER' DOGWOOD | 1 1/2" CAL., 8'-10" HT. MIN. | B&B, MULTI. | PER PLAN |
| OE | SMALL TREES / LARGE SHRUBS | | | | |
| OE | ACER CIRCINATUM | VINE MAPLE | 8'-10" HT. MIN. | B&B, MULTI. | PER PLAN |
| OE | CORYLUS CORNUTA VAR. CALIFORNICA | WESTERN HAZELNUT | 6" HT. MIN. | CONT., MULTI. | PER PLAN |
| CC | SMALL SHRUBS & GRASSES (TO BE LOCATED) | | | | |
| CC | BLECHNUM SPICANT | DEER FERN | 1 GAL | CONTAINER | 18" O.C. |
| CC | CORNUS STOLONIFERA 'KELSEY' | 'KELSEY' REDTIG DOGWOOD | 1 GAL | CONTAINER | 24" O.C. |
| CC | DRYOPTERIS ERYTHROSORA | AUTUMN FERN | 1 GAL | CONTAINER | 18" O.C. |
| CC | STIPA GIGANTEA | GIANT FEATHER GRASS | 1 GAL | CONTAINER | 24" O.C. |
| CC | IRIS SIBIRICA | SIBERIAN IRIS | 1 GAL | CONTAINER | 18" O.C. |
| CC | IRIS DOUGLASSIANA | PACIFIC COAST IRIS | 1 GAL | CONTAINER | 18" O.C. |
| CC | RHODODENDRON 'DORA AMATEIS' | 'DORA AMATEIS' RHODODENDRON | 5 GAL | CONTAINER | 24" O.C. |
| CC | RHODODENDRON 'IRENE KOSTER' | 'IRENE KOSTER' AZALEA | 5 GAL | CONTAINER | 36" O.C. |
| CC | RHODODENDRON 'YAKU PRINCESS' | 'YAKU PRINCESS' RHODODENDRON | 5 GAL | CONTAINER | 36" O.C. |
| CC | RIBES SANGUINEUM 'KING EDWARD VII' | RED FLOWERING CURRANT | 5 GAL | CONTAINER | 48" O.C. |
| CC | ROSA X 'NOALA' | FLOWER CARPET 'CORAL' | 5 GAL | CONTAINER | 30" O.C. |
| CC | SPIRAEA 'ANTHONY WATERER' | 'ANTHONY WATERER' SPIREA | 5 GAL | CONTAINER | 30" O.C. |
| CC | SYMPHORICARPOS ALBUS | SNOWBERRY | 5 GAL | CONTAINER | 36" O.C. |
| CC | VACCINIUM 'NORTHSKY' | 'NORTHSKY' BLUEBERRY | 5 GAL | CONTAINER | 30" O.C. |
| CC | VACCINIUM 'SUNSHINE BLUE' | 'SUNSHINE BLUE' BLUEBERRY | 5 GAL | CONTAINER | 30" O.C. |
| CC | VACCINIUM OVATUM | EVERGREEN HUCKLEBERRY | 5 GAL | CONTAINER | 30" O.C. |
| CC | VIBURNUM DAVIDII | DAVID'S VIBURNUM | 5 GAL | CONTAINER | 30" O.C. |
| | GROUNDCOVER MIXES | | | | |
| | MIX #1: (PLANT IN GROUPS OF 3 OR 5) | | | | |
| | 10% ARCTOSTAPHYLOS UVA-URSI | 10% KINKINNICK | 1 GAL | CONTAINER | 12" O.C. |
| | 10% FRAGARIA CHILOENSIS | 10% BEACH STRAWBERRY | 1 GAL | CONTAINER | 12" O.C. |
| | 40% GAULTHERIA SHALLON | 40% SALAL | 1 GAL | CONTAINER | 18" O.C. |
| | 20% MAHONIA NERVOSA | 20% DULL OREGON GRAPE | 1 GAL | CONTAINER | 18" O.C. |
| | 20% POLYSTICHUM MUNITUM | 20% SWORD FERN | 1 GAL | CONTAINER | 18" O.C. |
| | MIX #2: SWALE (PLANT IN GROUPS OF 3 OR 5) | | | | |
| | 40% CAREX OBNUPTA | 40% SLOUGH SEDGE | 1 GAL | CONTAINER | 18" O.C. |
| | 30% IRIS SIBIRICA | 30% SIBERIAN IRIS | 1 GAL | CONTAINER | 18" O.C. |
| | 30% IRIS DOUGLASSIANA | 30% PACIFIC COAST IRIS | 1 GAL | CONTAINER | 18" O.C. |
| | MIX #3: (PLANT IN GROUPS OF 3 OR 5) | | | | |
| | 40% BLECHNUM SPICANT | 40% DEER FERN | 1 GAL | CONTAINER | 18" O.C. |
| | 20% CORNUS CANADENSIS | 20% BUNCHBERRY | 1 GAL | CONTAINER | 18" O.C. |
| | 20% GAULTHERIA PROCCUMBENS | 20% WINTERGREEN | 1 GAL | CONTAINER | 18" O.C. |
| | 20% CORNUS STOLONIFERA 'KELSEY' | 20% 'KELSEY' DOGWOOD | 1 GAL | CONTAINER | 18" O.C. |
| | MIX #4 | | | | |
| | 80% EPIMEDIUM PERALCHICUM 'FROHNLEITEN' | 80% 'FROHNLEITEN' BISHOPS HAT | 1 GAL | CONTAINER | 18" O.C. |
| | 20% POLYSTICHUM MUNITUM | 20% SWORD FERN | 1 GAL | CONTAINER | 18" O.C. |
| | ACCENT PLANTS (TO BE PLACED BY LANDSCAPE ARCHITECT IN THE FIELD) | | | | |
| | (50) AQUILEGIA FORMOSA | WESTERN COLUMBINE | 1 GAL | CONTAINER | PER L.A. |
| | (50) ECHINACEA PURPUREA | PURPLE CONEFLOWER | 1 GAL | CONTAINER | PER L.A. |
| | (50) PENSTEMON X GLOXINIOIDES 'GARNET' | 'GARNET' PENSTEMON | 1 GAL | CONTAINER | PER L.A. |
| | (50) TRILLIUM OVATUM | TRILLIUM | 1 GAL | CONTAINER | PER L.A. |
| | * NARCISSUS 'HIGH SOCIETY' | 'HIGH SOCIETY' DAFFODIL | BULB | 3 BULBS/ SYMBOL | PER L.A. |

**PERKINS
+WILL**

1221 Second Avenue
 Suite 200
 Seattle, WA 98101
 P: 206.461.1811
 F: 206.461.1811
 www.perkinswill.com

**Tukwila
Library**

**King County
Library
System**

14242 Tukwila International
 Boulevard
 Tukwila, WA 98168

Company Name
 Address Line 1
 Address Line 2
 1000000000
 1000000000

KAREN KJEST
 Landscape Architects
 111 W. John St., Suite 305
 Seattle WA 98119
 tel.: 206.323.6032



WASHINGTON
 LICENSED ARCHITECT
 LANDSCAPE ARCHITECT
 License No. 1550
 License No. 1550
 EXPIRES ON 12/10/2013

Revisions

| NO. | ISSUE | DATE |
|--------------------------|------------|------|
| Sheet Information | | |
| Date | 10/2/2013 | |
| Job Number | 161028.000 | |
| Drawn | KM | |
| Checked | KK | |
| Approved | KK | |
| Title | | |

**LANDSCAPE
PLANT LIST**

Sheet
L03-02

Copyright © 2011 Perkins+Will



| NO. | REVISION | DATE |
|-----|----------|------|
| | | |
| | | |
| | | |
| | | |
| | | |
| | | |
| | | |
| | | |
| | | |

Revisions

| NO. | REVISION | DATE |
|-----|----------|------|
| | | |
| | | |
| | | |
| | | |
| | | |
| | | |
| | | |
| | | |
| | | |

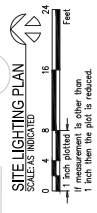
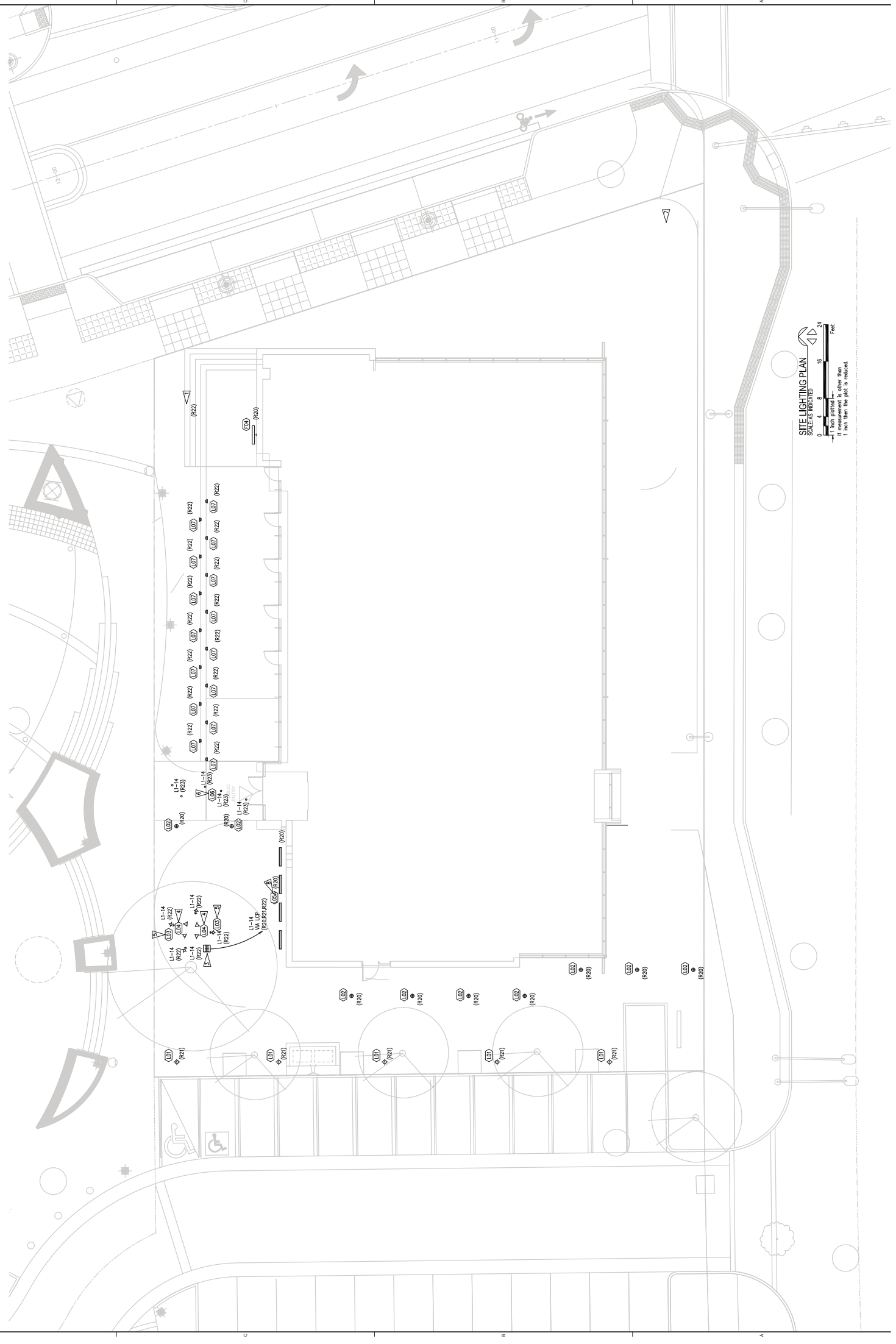
Revisions

SITE LIGHTING PLAN

Sheet
E01-02

Copyright © 2013 Perkins+Will

- GENERAL NOTES:**
1. PROVIDE TWO ZONES OF CONTROL FOR EXTERIOR SITE LIGHTING. ONE ZONE TO CONTROL LIGHTING OF THE BUILDING AND A SECOND TO CONTROL REMAINING LIGHT VIA PROTOCOL AT SUNRISE.
 2. ALL CONCRETS ARE TO BE 1" MINIMUM AND #30 WIRE.
 3. APPROPRIATE LOCATIONS OF FIXTURES WITH CIVIL AND LANDSCAPE ARCHITECTURAL DRAWINGS.
 4. ALL SITE LIGHTING ORIGINATED TO L1-14 AND CONTROLLED VIA LIGHTING CONTROL PANEL (LCP) RELAYS.
 5. PROVIDE CONCRETE POLE BASE FOR TYPE 'L01' LIGHT POLES PER DETAIL Z ON SHEET E01-02.
 6. PROVIDE CONCRETE BASE FOR BOLLARD TYPE 'L02' PER MANUFACTURER'S REQUIREMENTS.
- FLAG NOTES:**
- ▲ INTEGRAL INTEGRATED LED LIGHT FIXTURE TYPE 'L14'. COORDINATE QUANTITIES AND LOCATIONS WITH ARCHITECTURAL DRAWINGS FOR THROUGH CANOPY AND DOWNLIGHT THROUGH LEAVES AND BRANCHES TO CREATE PATTERNED LIGHT/SHADOW ON GROUND BELOW.
 - ▲ TREE MOUNTED DOWNLIGHT. FIXTURE MOUNTS HIGH IN TREE CANOPY TO DOWNLIGHT THROUGH LEAVES AND BRANCHES TO CREATE PATTERNED LIGHT/SHADOW ON GROUND BELOW.
 - ▲ STAKE MOUNTED TREE/SCULPTURE UPLIGHT.
 - ▲ IN-GROUND LED MARKER LIGHT FOR SPARKLE.
 - ▲ LIGHT FIXTURE ART PRICE TO BE DETERMINED.
 - ▲ IN-GROUND LINEAR ASYMMETRIC LED TO PROVIDE WALL WASHING.



1817643\CD008\031_02_04_24_2013_10:08 PM B9.dwg

1221 Second Avenue
Suite 200
Seattle, WA 98101

PERKINS+WILL