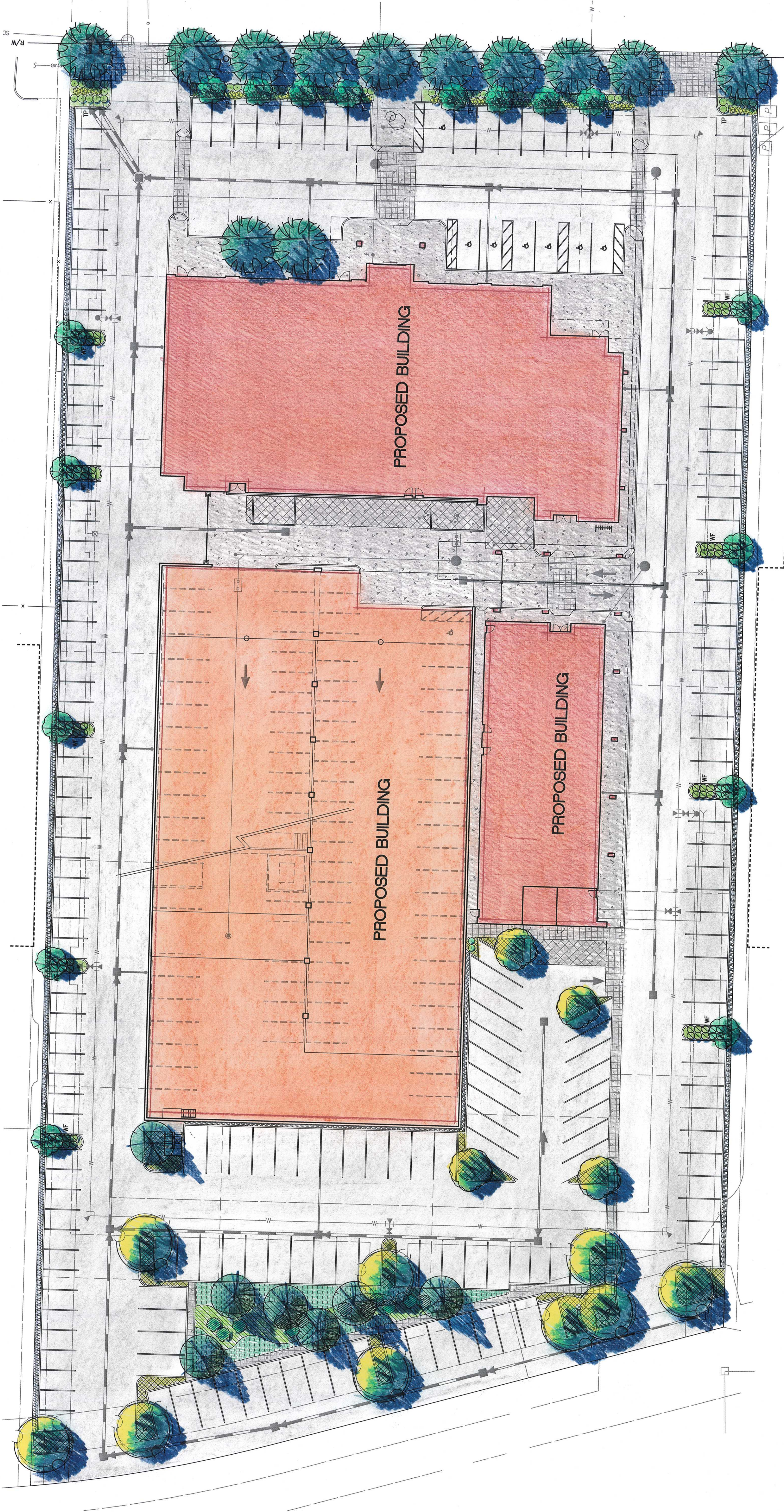
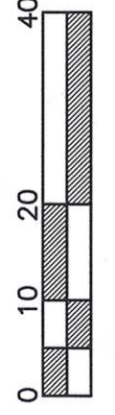


PRELIMINARY SITE LANDSCAPE PLAN

FOR

WASHINGTON PLACE

PORTION OF THE NE1/4 OF THE NE1/4 OF SEC. 26, TWP. 23 NORTH, RGE. 4 EAST, W.M.
CITY OF TUKWILA, KING COUNTY WASHINGTON



LANDSCAPE PLANT MATERIAL LEGEND

SYMBOL	BOTANICAL / COMMON NAMES	SIZE CONDITION	SPACING	QUANTITY	REMARKS	SYMBOL	BOTANICAL / COMMON NAMES	SIZE CONDITION	SPACING	QUANTITY	REMARKS	SYMBOL	BOTANICAL / COMMON NAMES	SIZE CONDITION	SPACING	QUANTITY	REMARKS
	TREES: CALOCEDRUS DECAIDENS / INCENSE CEDAR	6" - 7" HT. B & B	AS SHOWN	7	STAKE & GUY ONE GROWING SEASON; NURSERY GROWN; UN-CUT LEADER		ZELKOVA SERRATA 'GREEN WAVE' / GREEN WAVE ZELKOVA (STREET TREE)	2" CAL B & B	25' O.C.	12	STAKE & GUY ONE GROWING SEASON; NURSERY GROWN; BRANCHED AT 6'		HAMMELIS INTERMEDIA 'ARNOLD PROMISE' / ARNOLD PROMISE WITCH HAZEL	18" - 21"	AS SHOWN	12	FULL AND BUSHY, MATCHED HEIGHT AND FORM
	LIRIODENDRON TULIPIFERA / TULIP TREE (PARKING LOT TREE)	2" CAL B & B	AS SHOWN	9	STAKE & GUY ONE GROWING SEASON; NURSERY GROWN; BRANCHED AT 6'		EXISTING TREE				TO REMAIN, SAME AND MATCH; SEE ARCHITECTURAL PLANS		ALEX GUABRA 'NORDIC' / COMPACT INDBERRY	18" - 21"	2.5' O.C.	72	FULL AND BUSHY, MATCHED HEIGHT AND FORM
	LIRIODENDRON TULIPIFERA 'ARNOLD' / COLLUMAR TULIP TREE (PARKING LOT TREE)	2" CAL B & B	AS SHOWN	4	STAKE & GUY ONE GROWING SEASON; NURSERY GROWN; BRANCHED AT 6'		SHRUBS: CALAMAGROSTE ACUTIOLEA 'KARL FORESTER' / KARL FORESTER FEATHER REED GRASS	1 GALLON	2.5' O.C.	61	FULL		TRINAE FESIODORANUS / WOLLY THyme	4" POT	AS REQ'D	AS REQ'D	HOLD 12" FROM BORDERS, SHRUBS, AND TREES
	POPULUS TREMULA 'ERECTA' / SIBERIAN ASPEN	1.5" CAL B & B	AS SHOWN	8	STAKE & GUY ONE GROWING SEASON; NURSERY GROWN; BRANCHED AT 6'		CORNUS STOLONIFERA 'KELSEY' / DWARF REDTNG DOWWOOD	2 GALLON	3' O.C.	78	FULL		WALUSTENIA FRAGRANDES / BARKY STRIMBERRY	4" POT	AS REQ'D	AS REQ'D	HOLD 12" FROM BORDERS, SHRUBS, AND TREES
							ROCK COTONEASTER	1 GALLON	24" O.C.	AS REQ'D	FULL AND BUSHY		LAWN	SOD	COVER	COVER	4" LAYER OVER LANDSCAPE FABRIC

ATTACHMENT B

STATE OF WASHINGTON
REGISTERED
LANDSCAPE ARCHITECT
ARTHUR M. SEIDEL
NO. 10000
EXPIRES: 12/15/14

Title: PRELIMINARY SITE LANDSCAPE PLAN
For: WASHINGTON PLACE HOTEL/APARTMENTS 223 ANDOVER PARK EAST TUKWILA, WA

Scale: Horizontal: 1"=20'-0" Vertical: N/A
Designed: AMS
Drawn: AMS
Checked: AS
Approved: DKB
Date: 2/14/14

Job Number: 16883
Sheet: 2 of 2

18215 72ND AVENUE SOUTH
KENT, WA 98032
(425)251-6222
(425)251-8782 FAX
CIVIL ENGINEERING, LAND PLANNING,
SURVEYING, ENVIRONMENTAL SERVICES

105/13/14 AMS AS DB PER REVISED SITE PLAN
Revision

