


<p>EL1 Wall Sconce proposed in the area between the south side of the garage and the apartment building.</p> 	<p>EL7 Recessed Downlighting proposed under porte-cochere.</p> 	<p>EL2 and EL4 Downlight proposed under the arcade along the south side of the apartment building.</p> 	<p>EL8 Diecast Aluminium LED Flood proposed above the apartment lobby entrance</p> 	<p>EL3 Ceiling Mounted proposed under the building used for vehicular access from the south side to the garage entrance.</p> 	<p>EL9 Wall Mounted on the top portion (two floors down from the top) of the building.</p> 	<p>EL6-2" Light Bar proposed under porte-cochere.</p> 	<p>EL10 Strip Lighting proposed on the top of the building (east and portion of the north/south side of the building)</p> 	<p>EL11 Color Changing Strip Lighting proposed to border the large square area along the east façade (facing Andover Park East)</p> 	<p>EL12 LED Flood Lighting proposed along the north, south and west of the building one story above the brick base.</p> 	<p>EL13 Alpha Flood Lighting proposed along the shorter edges of the L-shaped building (north and west side)</p> 	<p>EL14 Outdoor Accent Lighting proposed on the upper deck of the parking garage mounted on trellis.</p> 	<p>EL15 Accent Lighting mounted proposed along the bottom of the banners along east façade.</p> 	<p>PL1 and PL2 Pole Mounted in the parking lot mounted at 20 feet.</p> 	<p>WP1 and WP2 Wall Pack along the north side of the garage mounted at 12 feet and 16 feet respectively.</p> 	<p>WP3 Wall Sconce along south façade mounted at 12 feet</p> 
--	---	---	---	---	---	---	--	---	---	--	--	--	---	--	---

ISSUE	Δ	Date	Description
		03/07/2014	DESIGN REVIEW SUBMITTAL
		03/20/2014	
		03/27/2014	

KEYPLAN

PHASE

PROJECT NUMBER
GWA NO.
PROJECT

WASHINGTON PLACE
HOTEL / APARTMENT
223 ANDOVER PARK E
TUKWILA, WA

CONSULTANT

REGISTRATION



GROUP WEST ARCHITECTS, INC., P.S.
3601 FREMONT AVE. N
SUITE 314
SEATTLE, WA 98103
PHONE: (206) 826-4447
FAX: (206) 826-4446
WWW.GROUPWESTCOMPANIES.COM

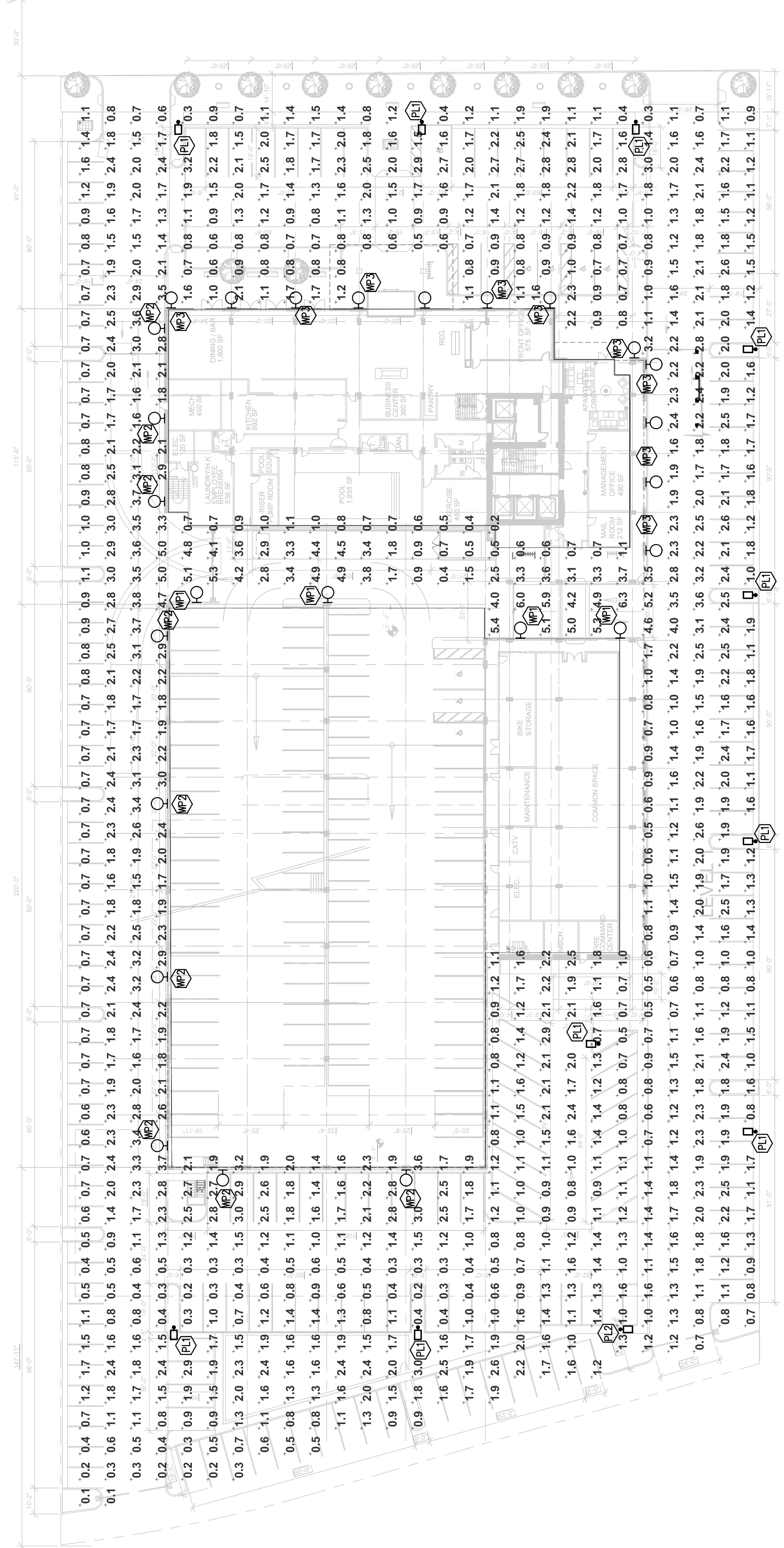
SHEET TITLE AND NUMBER

TYPE	DESCRIPTION	MANUFACTURER			LAMP TYPE	QTY.	INPUT WATTS	Notes
		NAME	CATALOG NUMBER					
EL1	WALL SCONCE	HUBBELL	LNC2		1		SURFACE	
EL2	8" DOWNLIGHT	PRESCOLITE	MD8LED		1		FLUSH	
EL3	1'X1' CEILING MOUNTED	BEACON	EDR		1		SURFACE	
EL4	DOWNLIGHT	PRESCOLITE	MD8LED		1		FLUSH	
EL6	2" LIGHT BAR	TIVOLI	CLL-LB		1		SURFACE	
EL7	RECESSED DOWNLIGHTING	PATHWAY	6VLB		1		FLUSH	
EL8	DIE-CAST ALUMINUM LED FLOOD	KIM LIGHTING	EL218		1		SURFACE	
EL9	WALL MOUNTED	LUMASCAPE	LS411LED		1		SURFACE	
EL10	STRIP LIGHTING	BOCA FLASHER	HPNLS-HO		1		SURFACE	
EL11	COLOR CHANGING STRIP LIGHTING	BOCA FLASHER	HPCCS		1		SURFACE	
EL12	LED FLOOD LIGHTING	BEACON	CDT		1		SURFACE	
EL13	ALPHA FLOOD LIGHTING	BEACON	AL-		1		SURFACE	
EL14	OUTDOOR ACCENT LIGHTING	HUBBELL	MHS		1		SURFACE	
EL15	ACCENT LIGHTING	ILLUMITEX	VL		1		SURFACE	
PL1	POLE MOUNTED LIGHT FIXTURE - TYPE 3	KIM LIGHTING	WP9S9P70-60L4K-NFO	LED	1	131	MOUNTED AT 20'-0"	
PL2	POLE MOUNTED LIGHT FIXTURE - TYPE 5	KIM LIGHTING	WP9S9P70-60L4K-NFO	LED	1	131	MOUNTED AT 20'-0"	
WP1	WALL PACK	BEACON	TRV-D 36NB-80 T3	LED	1	80	MOUNTED AT 12'-0"	
WP2	WALL PACK	BEACON	TRV-D 36NB-80 T4	LED	1	80	MOUNTED AT 16'-0"	
WP3	WALL SCONCE	ARCHITECTURAL AREA LIGHTING	PKSA UBDS - 24LED-BW-	LED	1	28	MOUNTED AT 12'-0"	

ISSUE	Δ	Date	Description
		03/07/2014	DESIGN REVIEW
		03/20/2014	SUBMITTAL
		03/27/2014	

TYPE	DESCRIPTION	NAME		MANUFACTURER		LAMP		INPUT WATTS	Notes
		DESCRIPTION	CATALOG NUMBER	QTY.	TYPE				
PL1	POLE MOUNTED LIGHT FIXTURE - TYPE 3	KIM LIGHTING	WP9S3P70-60L-4K-NFO	1	LED	131	MOUNTED AT 20'-0"		
PL2	POLE MOUNTED LIGHT FIXTURE - TYPE 5	KIM LIGHTING	WP9S5P70-60L-4K-NFO	1	LED	131	MOUNTED AT 20'-0"		
WP1	WALL PACK	BEACON	TRV-D 36NB-80 T3	1	LED	80	MOUNTED AT 12'-0"		
WP2	WALL PACK	BEACON	TRV-D 36NB-80 T4	1	LED	80	MOUNTED AT 16'-0"		
WP3	WALL SCONCE	ARCHITECTURAL AREA LIGHTING	PKSA UBDS - 24LED-BW-	1	LED	28	MOUNTED AT 12'-0"		

Statistics						
Description	Symbol	Avg	Max	Min	Max/Min	Avg/Max
PARKING LOT CALCS	+	1.7 fc	7.7 fc	0.1 fc	77.0:1	17.0:1
						0.2:1



SITE PLAN

1 ELECTRICAL SITE PLAN - PT BY PT
SCALE: 1"=30'-0"

WASHINGTON PLACE
HOTEL / APARTMENT
223 ANDOVER PARK E
TUKWILA, WA

CONSULTANT
REGISTRATION



GROUP WEST
ARCHITECTS, INC., P.S.
3601 FREMONT AVE. N
SUITE 314
SEATTLE, WA 98103
PHONE: (206) 826-4447
FAX: (206) 826-4446
WWW.GROUPWESTCOMPANIES.COM

SHEET TITLE AND NUMBER

EL-2

PLOTTED

5/8/2014 11:11 AM
P:\B\PLDW

ISSUE	Δ	Date	Description
		03/07/2014	DESIGN REVIEW SUBMITTAL
		03/20/2014	
		03/27/2014	

KEYPLAN
PHASE
PROJECT NUMBER
GWA NO.
PROJECT

WASHINGTON PLACE
HOTEL / APARTMENT
223 ANDOVER PARK E
TUKWILA, WA

CONSULTANT
REGISTRATION

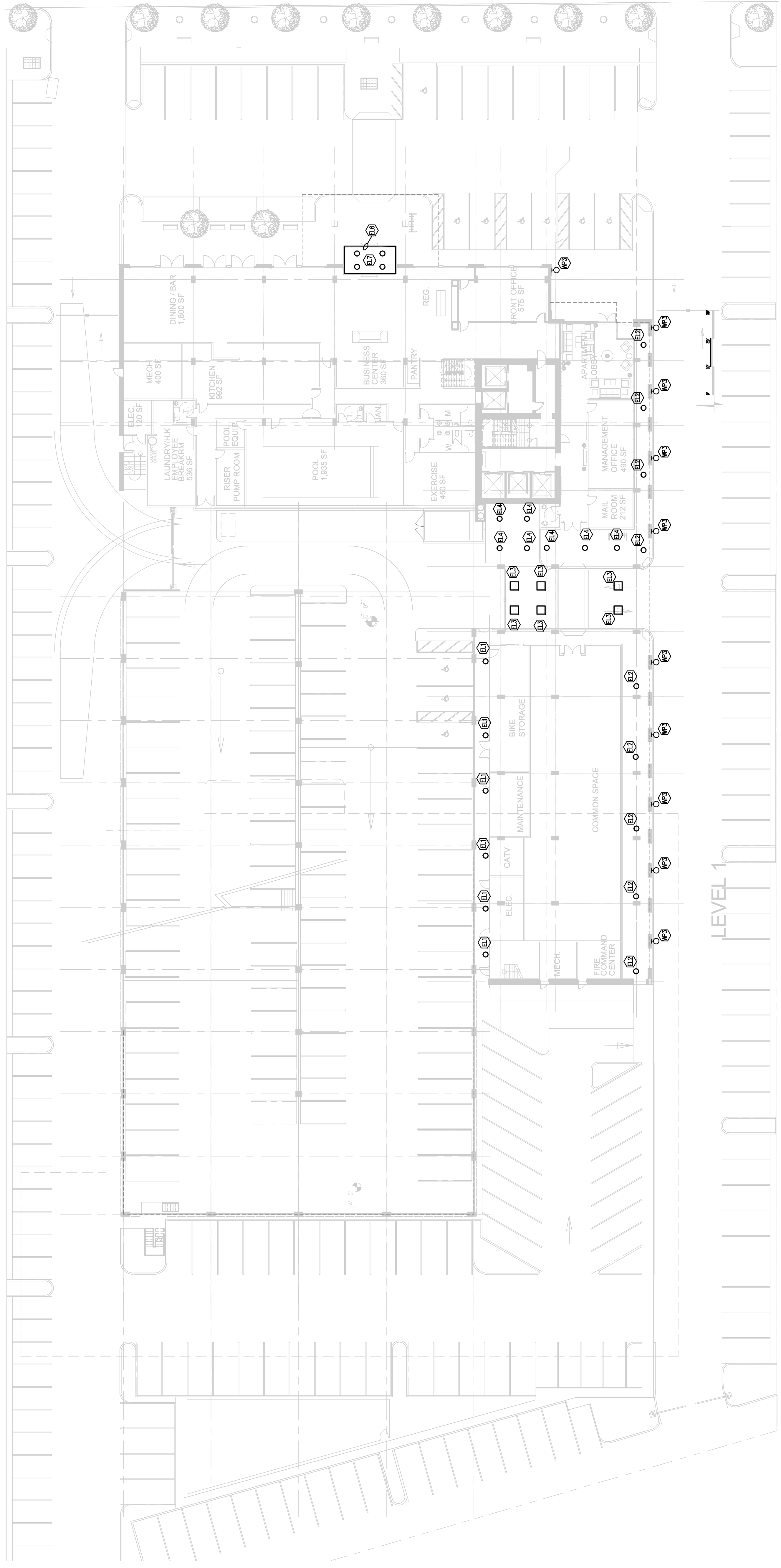


GROUP WEST
ARCHITECTS, INC., P.S.
3601 FREMONT AVE. N
SUITE 314
SEATTLE, WA 98103
PHONE: (206) 826-4447
FAX: (206) 826-4446
WWW.GROUPWESTCOMPANIES.COM

SHEET TITLE AND NUMBER

EL-3
REVISED: 05-07-2014
PLOTTED

GENERAL NOTES
1. SEE DRAWING EL-2 FOR ADDITIONAL LIGHTING FIXTURE LOCATIONS.



LEVEL 1

1 ELECTRICAL SITE PLAN
SCALE: 1"=20'-0"

142013 SITE PLAN EXTERIOR
L142013.dwg
5/7/2014 11:13

ISSUE	Δ	Date	Description
		03/07/2014	DESIGN REVIEW SUBMITTAL
		03/20/2014	
		03/27/2014	

KEYPLAN

PHASE

PROJECT NUMBER

GWA NO.

PROJECT

WASHINGTON PLACE
HOTEL / APARTMENT
223 ANDOVER PARK E
TUKWILA, WA

CONSULTANT

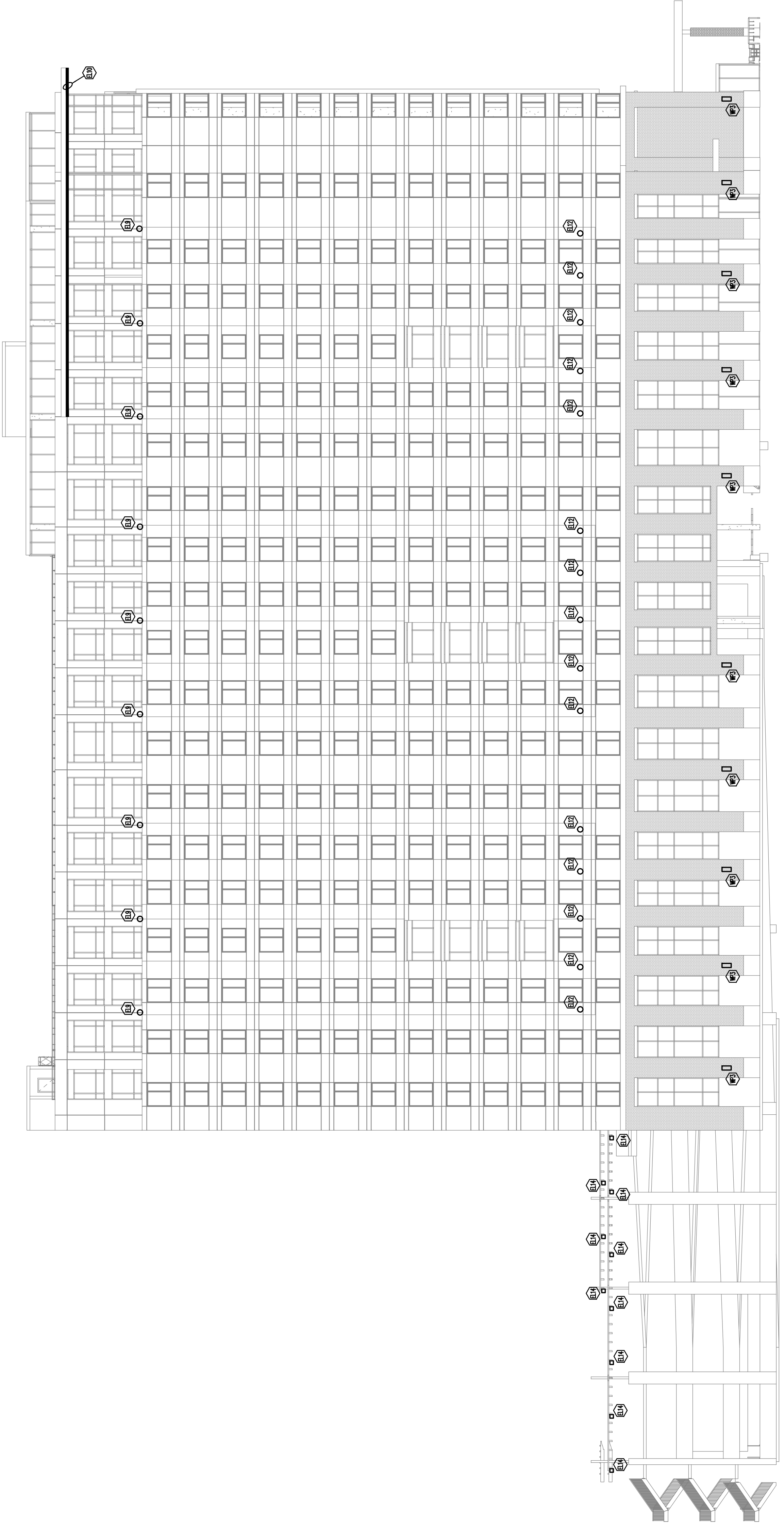
REGISTRATION



GROUP WEST
ARCHITECTS, INC., P.S.
3601 FREMONT AVE. N
SUITE 314
SEATTLE, WA 98103
PHONE: (206) 826-4447
FAX: (206) 826-4446
WWW.GROUPWESTCOMPANIES.COM

SHEET TITLE AND NUMBER

EL-4
REVISED: 05-07-2014
PLOTTED



1 SOUTH ELEVATION ELECTRICAL
SCALE: 1/16"=1'-0"

14013.ELEVATION SOUTH.dwg
5/7/2014 1:11

ISSUE	Δ	Date	Description
		03/07/2014	DESIGN REVIEW SUBMITTAL
		03/20/2014	
		03/27/2014	

KEYPLAN

PHASE

PROJECT NUMBER

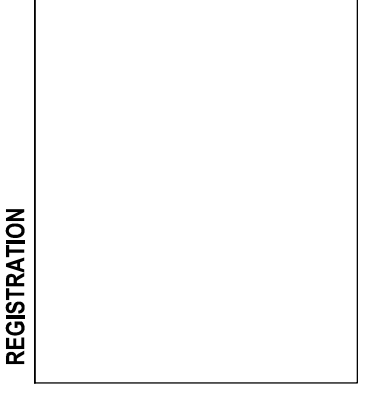
GWA NO.

PROJECT

WASHINGTON PLACE
HOTEL / APARTMENT
223 ANDOVER PARK E
TUKWILA, WA

CONSULTANT

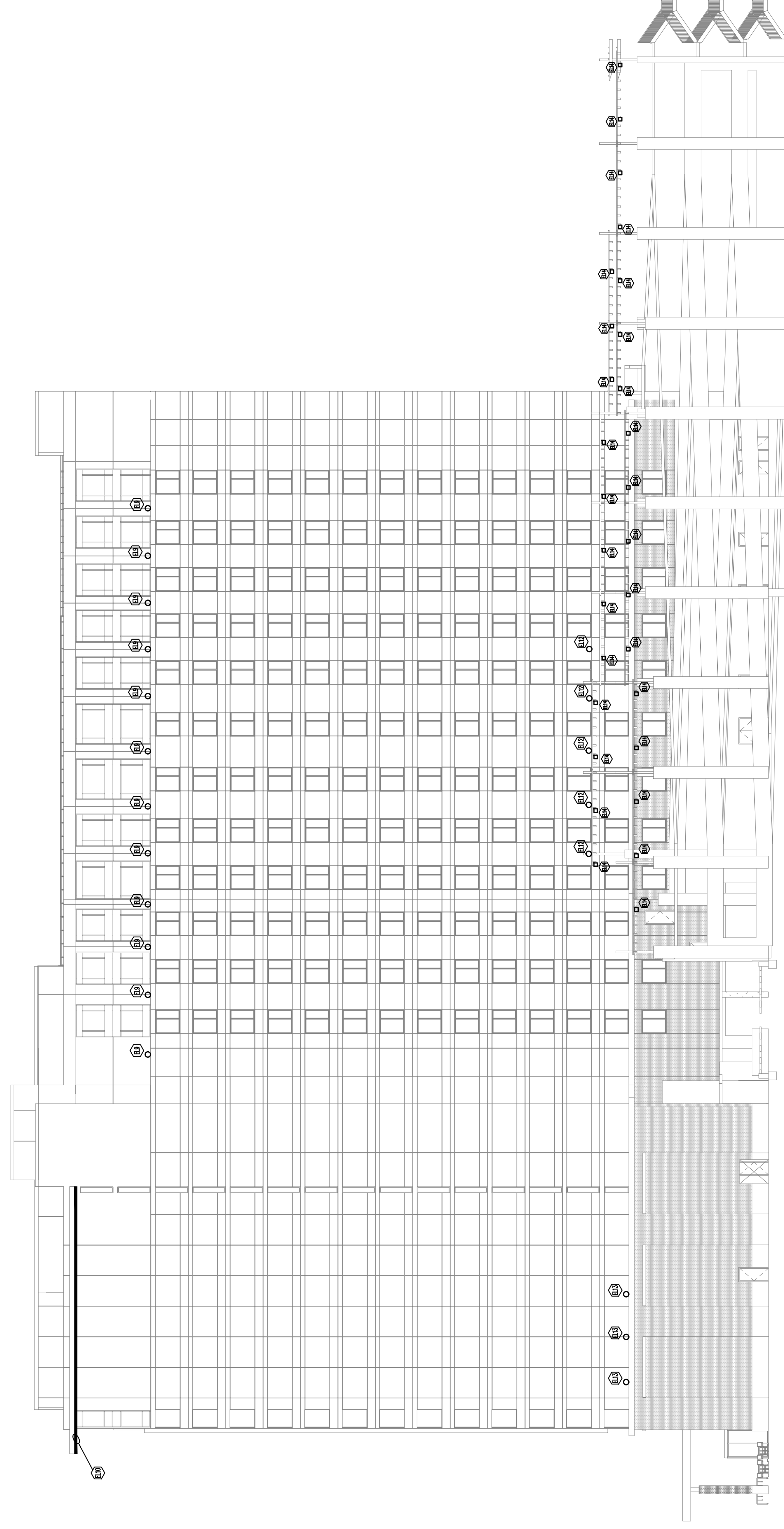
REGISTRATION



GROUP WEST
ARCHITECTS, INC., P.S.
3601 FREMONT AVE. N
SUITE 314
SEATTLE, WA 98103
PHONE: (206) 826-4447
FAX: (206) 826-4446
WWW.GROUPWESTCOMPANIES.COM

SHEET TITLE AND NUMBER

EL-5
PLOTTED: 5/8/2014 1:11



1 NORTH ELEVATION ELECTRICAL
SCALE: 1/16"=1'-0"

1-0013 ELEVATION NORTH.dwg

ISSUE	Δ	Date	Description
		03/07/2014	DESIGN REVIEW SUBMITTAL
		03/20/2014	
		03/27/2014	

KEYPLAN

PHASE

PROJECT NUMBER

GWA NO.

PROJECT

WASHINGTON PLACE
HOTEL / APARTMENT
223 ANDOVER PARK E
TUKWILA, WA

CONSULTANT

REGISTRATION



GROUP WEST
ARCHITECTS, INC., P.S.
3601 FREMONT AVE. N
SUITE 314
SEATTLE, WA 98103
PHONE: (206) 826-4447
FAX: (206) 826-4446
WWW.GROUPWESTCOMPANIES.COM

SHEET TITLE AND NUMBER

EL-6
REVISED: 05-07-2014
PLOTTED

142013, ELEVATION EAST AND WEST
5/7/2014 11:53 AM
PLOT

