

Geospatial Production Capabilities

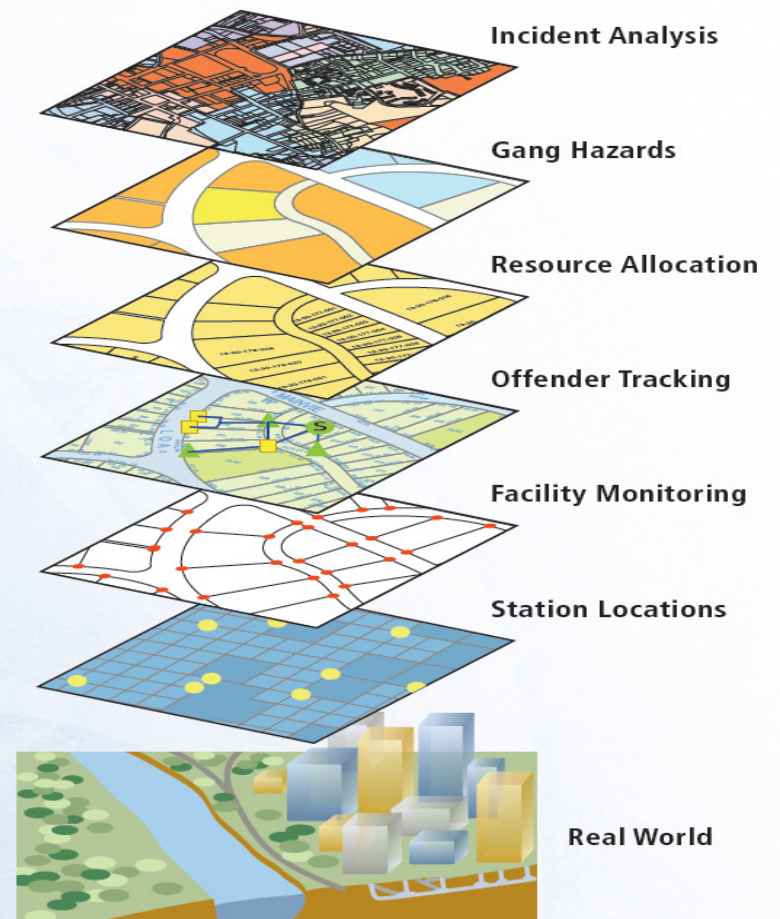
Austin Hackett



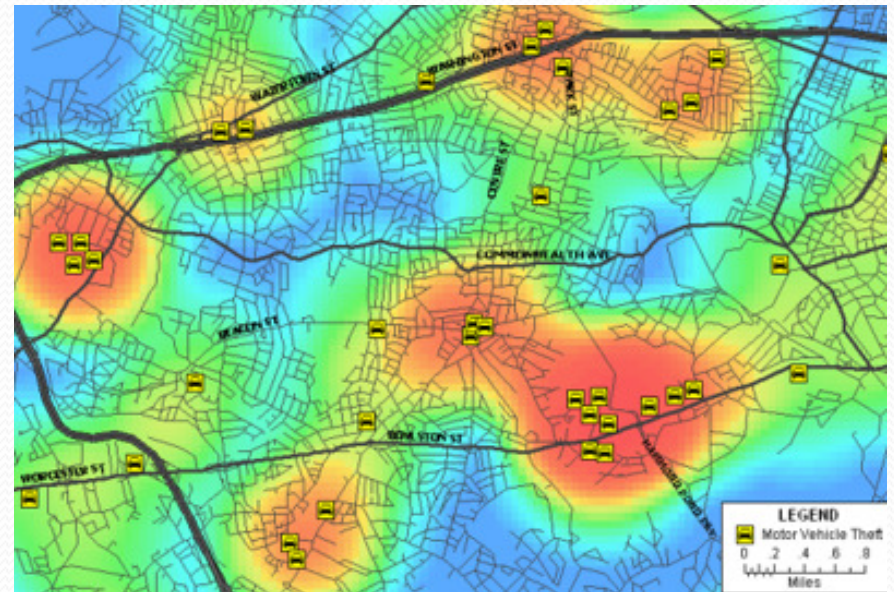
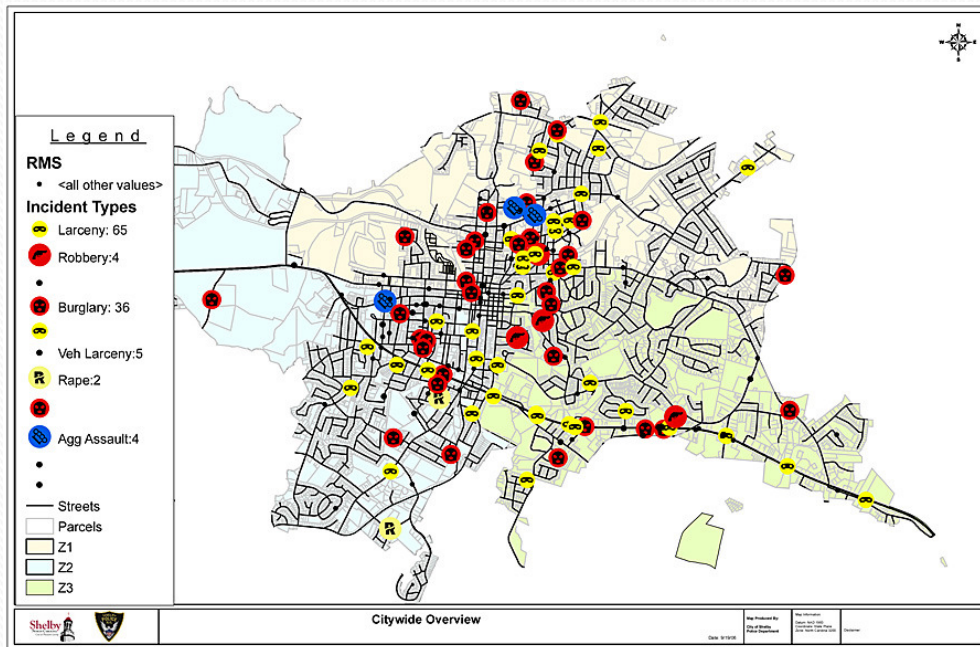
UNCLASSIFIED/UNLIMITED DISTRIBUTION

GIS in Law Enforcement

- Planning and analysis
- Data management
- Situational awareness/
Field Operations
- Contingency Preparation



Static Reports



UNCLASSIFIED/UNLIMITED DISTRIBUTION

Change Detection

Crime Rate Analysis at Hunting Park in Philadelphia, PA

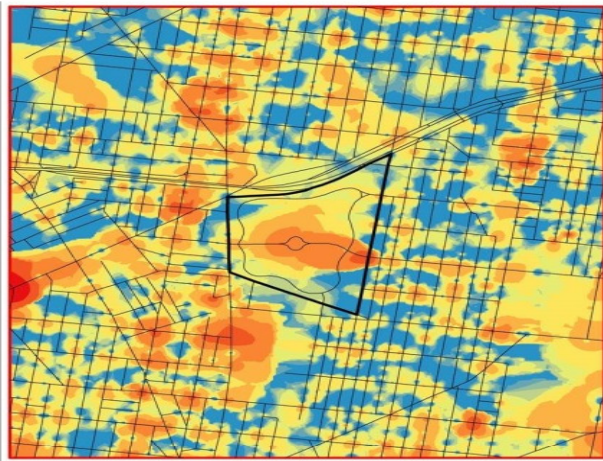
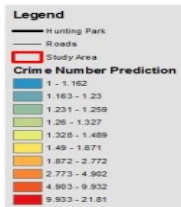


Figure 3. Predictive Model Based on 2009 Crime Incidents

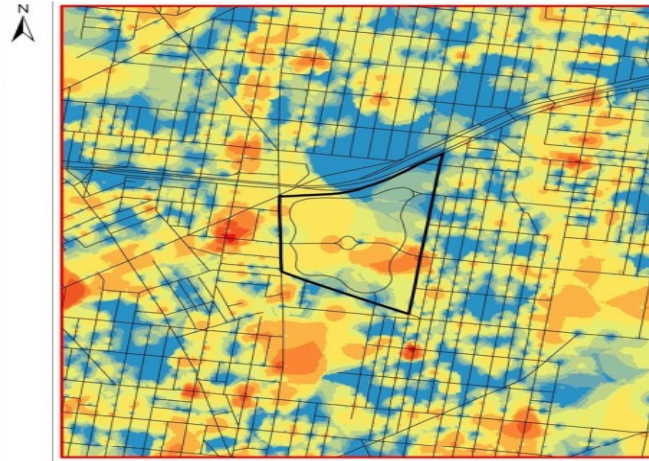
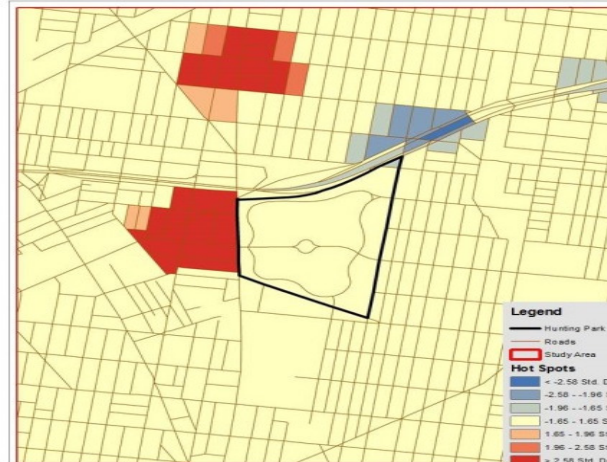
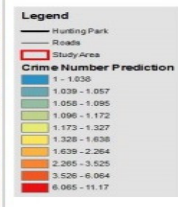
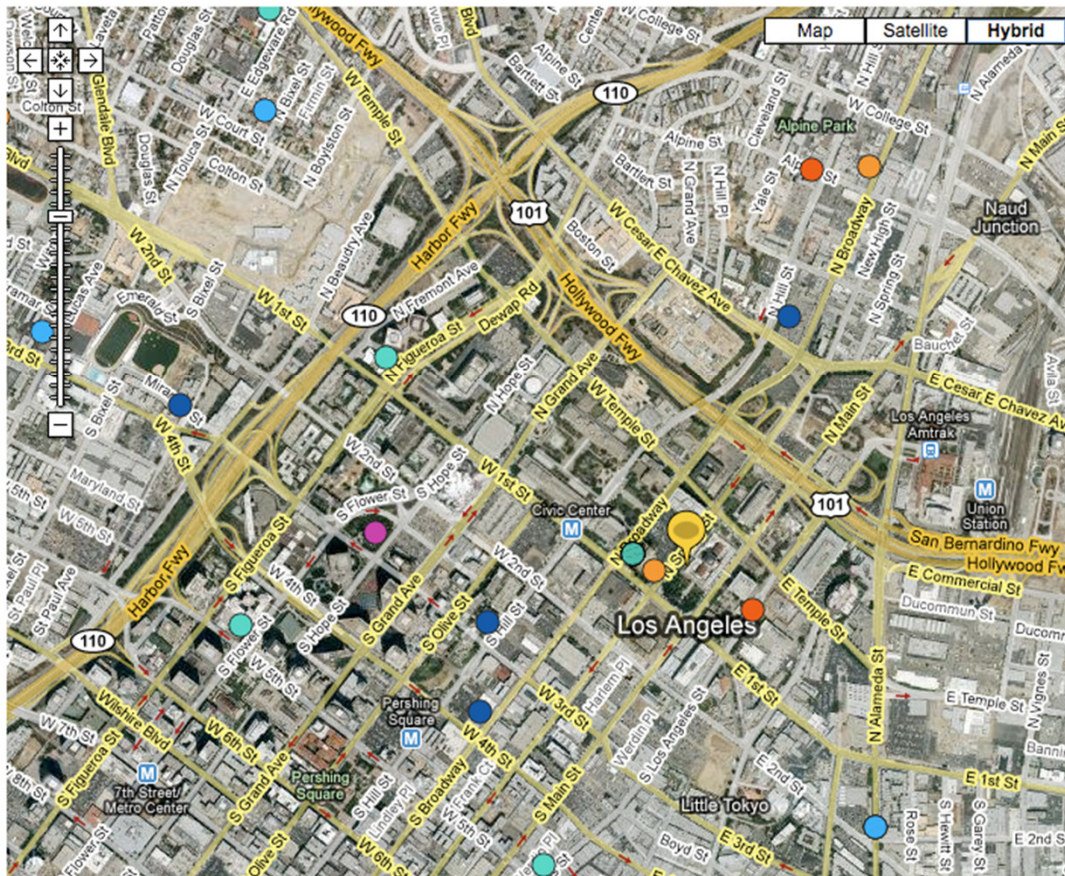


Figure 4. Predictive Model Based on 2013 Crime Incidents



UNCLASSIFIED/UNLIMITED DISTRIBUTION

User Accessibility



Map Satellite Hybrid

200 N Spring St
Los Angeles, CA 90012
[Central Division](#)

Date Range Shown:
10/02/2008 to 10/05/2008
Radius: 5 mile(s)

CRIME INFO SEARCH

Enter an address or double click the map for regional crime statistics

CHOOSE A DATE RANGE:
end date:(click icon below)

10/05/2008

3 days

5 miles

(7 day range may load slowly)

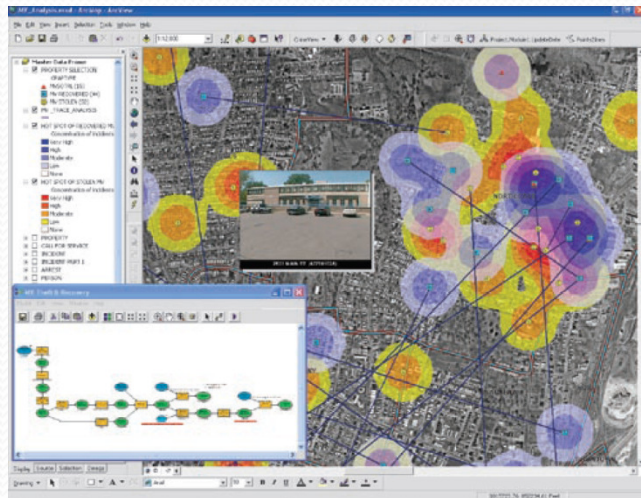
CHOOSE CRIMES

- Burglary (Property)
- Grand Theft Auto
- Theft from Vehicle
- Personal/Other Theft
- Robbery (Violent)
- Aggravated Assault
- Rape

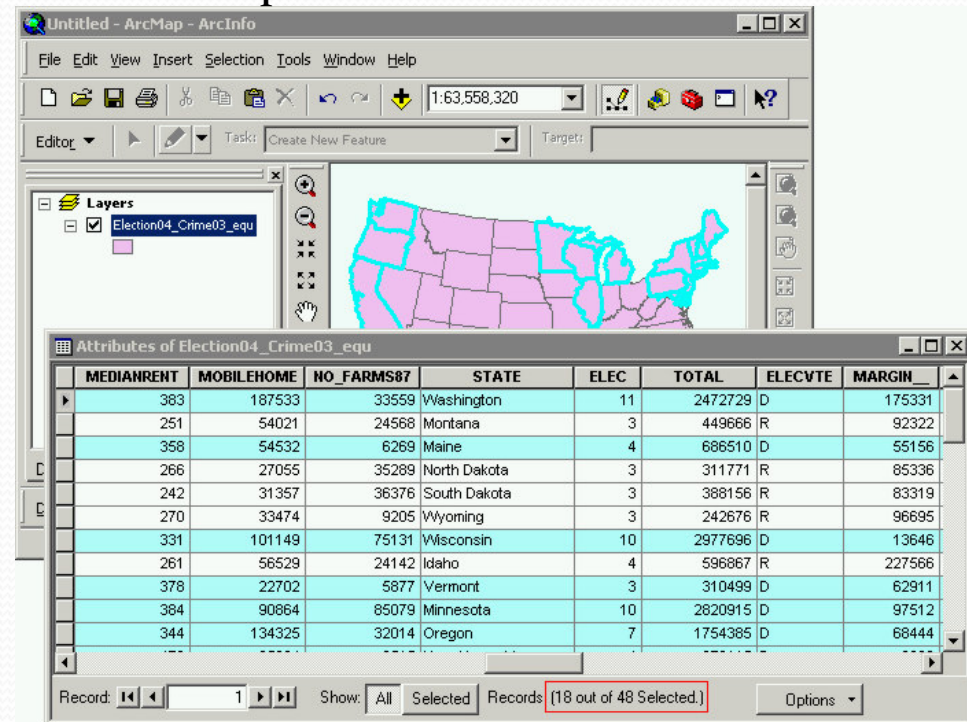
UNCLASSIFIED/UNLIMITED DISTRIBUTION

Trends Patterns Historical Data

Model Builder



Exportable databases



Command and Control Systems

Real time C2, dispatch, collections and event logging.

The screenshot displays a GIS-based Command and Control System interface. The main map shows a city area with various event markers. The 'Map Contents' panel on the left lists layers such as 'AVLFeeds', 'Unassigned', 'Out', 'Dispatched', 'On Scene', 'Enroute', and 'Default'. The 'Multiple Layer Query' panel on the right shows a query for 'Warrants.Drugs And Alcohol' with a selected geometry box. The 'Multiple Layer Query Results' table below shows the following data:

Title	OFFENSE	WARRANT CLASS	BAIL AMOUNT	Address
1370578	DRIVING UNDER THE INFLUENCE OF ALCOHOLS	HB	1413	2135 ADAMS AVE
1369853	OUT REACHED TO RECALUSE-ALCOHOL RELATED	HB	1450	907 23RD
1369895	USE OR POSSESSION OF DRUG PARAPHERNALIA	HB	405	2853 HARRISON BLVD
1369896	DRIVING UNDER THE INFLUENCE OF ALCOHOL	HB	1413	2135 ADAMS AVE

The interface also includes a 'Map Contents' panel on the left, a 'Multiple Layer Query' panel on the right, and a 'Multiple Layer Query Results' table at the bottom. The 'Multiple Layer Query Results' table shows a list of warrants with columns for Title, OFFENSE, WARRANT CLASS, BAIL AMOUNT, and Address. The table is currently displaying 0 out of 59 selected records.

UNCLASSIFIED/UNLIMITED DISTRIBUTION

Other Applications

- Traffic data/accident reporting
- Natural disaster preparation

