



Holiday Inn Express
Exterior Lighting Guide
Americas Region





CURB APPEAL

In “The Real World” your door is an inviting beacon. When you arrive, you know you are safe and in the right place. Enhanced design elements at the approach and entry work together to create this kind of “Real World” welcome by creating an energized and branded sense of arrival that is universally recognizable.



Lighting

Experience:

Façade lightscaping is a Signature Brand element, used to dramatically reinforce the Holiday Inn Express Brand with illuminated color. Colored beams of light are strategically cast on the building façade to provide guests with a visually impactful and intuitively recognizable cue for way finding to the property. Additionally, colored light beams cast along the columns at the entry provide secondary way finding to the entrance dramatically highlighting the arrival experience.

Essential Elements:

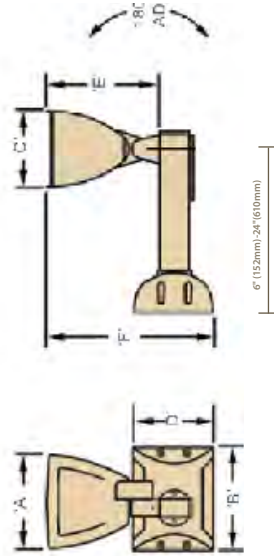
- Brand specified façade and column lighting

Building Lighting



Fixture Type 1

To be used to light 0-1 stories
70w CMH



Fixture Type 2

To be used to light 2+ stories
150w CMH



Semi Gloss Satin

NOTES:

- ALL fixtures should have Universal Voltage Ballasts
- Stories referenced are indicative of the number of stories the light is traveling up the building facade – not the number of stories of the hotel.
- Locations with six or more stories, or locations that are predominantly glass, need to be assessed individually and will require custom solutions.

Requirement:

A minimum of two up to a maximum of four light fixtures must be installed to effectively light the site-specific façade details. Lights must be cast and narrowed to a visually defined beam upon the façade and between windows. A general light wash on the building or lights shining onto windows is not permitted.

The light fixtures can be adjusted on two axes for proper beam aiming, as well as adjustable apertures for refined beam control and shaping.

All building light fixtures should be mounted at a consistent Above Finish Floor (AFF) height and discreetly located above the porte cochere.

Quantity, mounting location and lamp wattage must be determined based on specific property conditions. A site specific lighting plan must be submitted for approval to IHG Plan Review prior to installation.

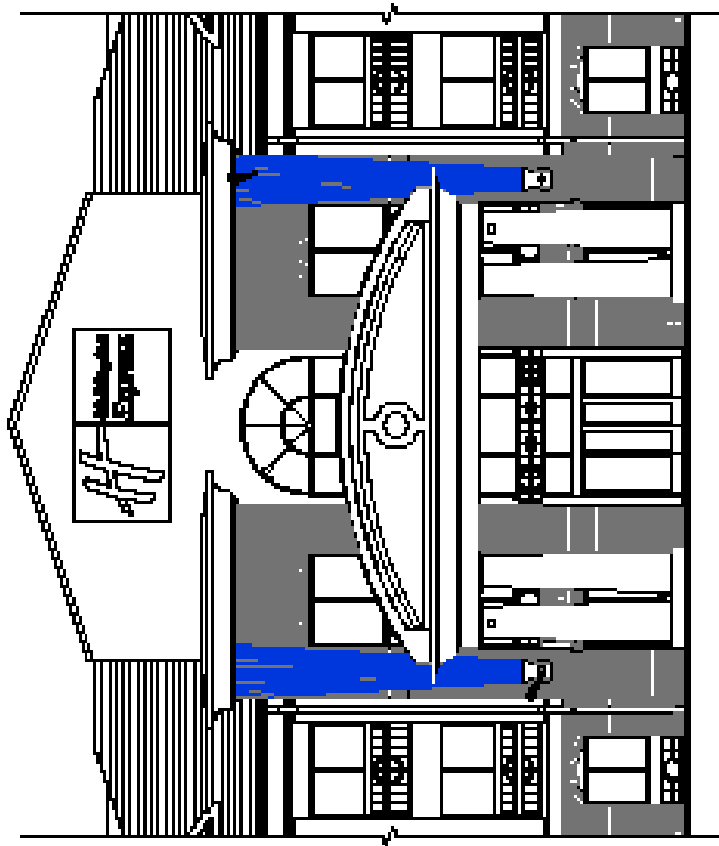
Secondary entries or exterior wall surfaces which are prominently visible from various building approaches may also be good locations for additional building lighting. Hotels are permitted, but not required, to install additional sets of lights in secondary and tertiary locations. As with front entry, application of light fixtures should be in groups of two to four, based on specific property conditions. For optional installations, a site specific lighting plan must be submitted for approval to IHG Plan Review.

Guidelines For Building Lighting Spacing

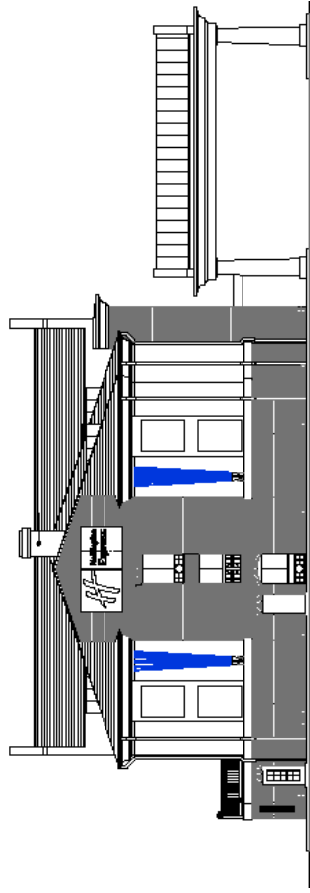


Building Lighting Priority

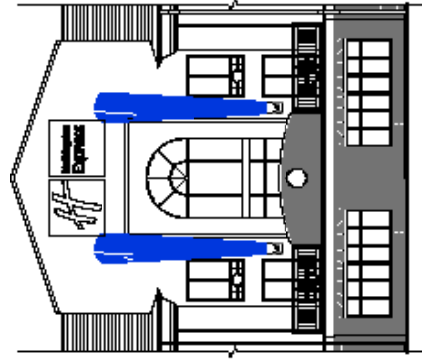
First Priority-Front Entry - (Mandatory)



Second Priority-Front Façade Flanking Entry



Third Priority-Side Elevations

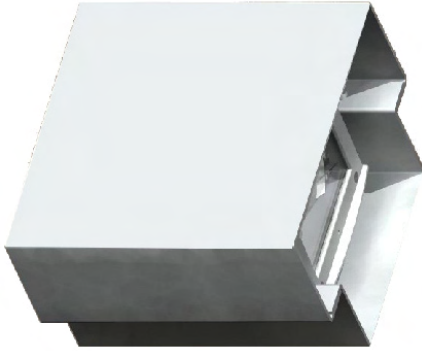


NOTE: Each light beam is to be no wider than 3' (915mm)

Column Sconce Lights

Shroud Renderings

Dimensions: 12" (305mm) x 12" (305mm)



Fixture Type

70w CMH



Semi Gloss Satin

Required:

All hotels must install two sconce light fixtures on columns at primary hotel entry. The sconce lighting fixtures should be installed on the front facing portion of the outermost left and right columns.

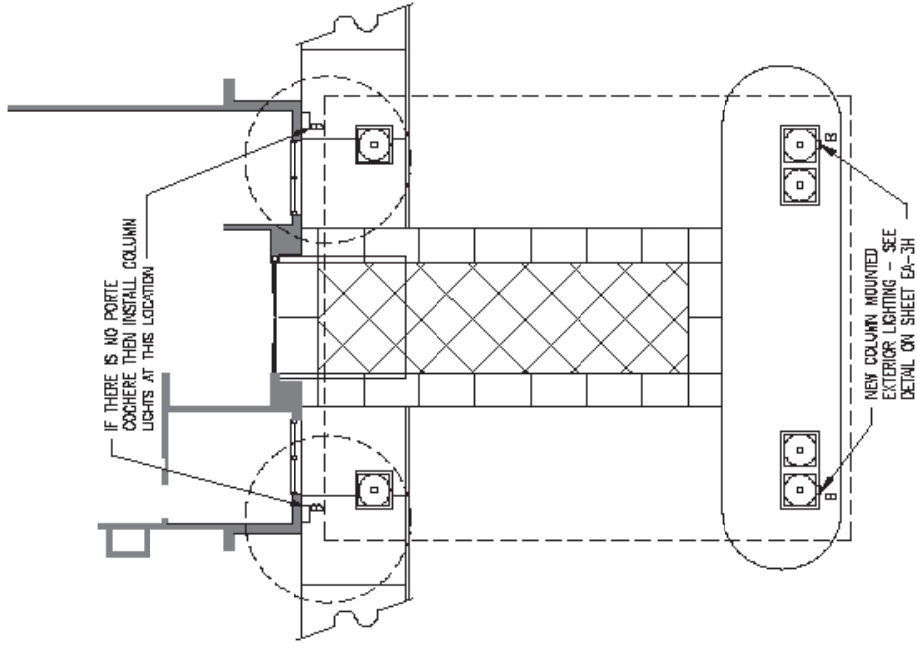
For hotels with no columns, the column light fixtures must be installed to the left and right of the entry door.

The column sconce light fixture is primarily intended to be a single down light application, with a decorative Holiday Inn Express square branded shroud. If columns are less than 12" (305mm) in diameter, shroud should not be used.

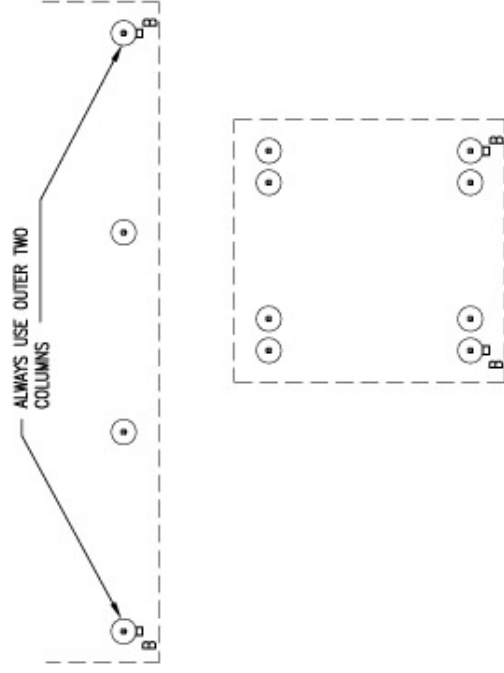
All column light fixtures should be mounted at a consistent Above Finish Floor (AFF) height towards the top three quarters of the column or façade surface where no columns are present. Consideration should be given to actual site-specific architectural details and other existing light fixture placement in determining actual light mounting heights.

Column Sconce Lights

Plan View
Preferred Column Layout

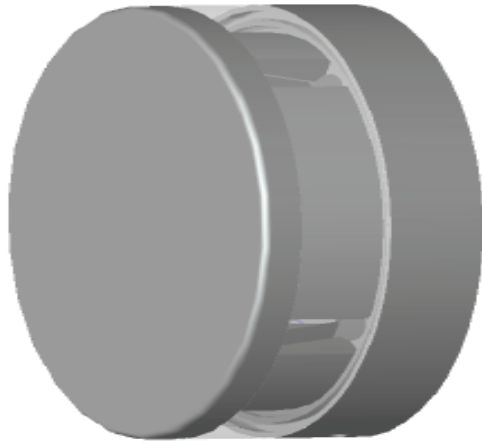


Plan View
Alternate Column Layout

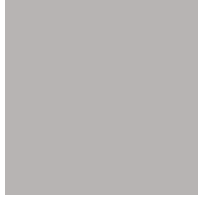


Formula Blue "X" Lights

Shroud Renderings
Dimensions: 6" (152) diameter



Fixture Type
5w LED



Semi Gloss Satin

Recommended:

The Formula Blue "X" Light is an optional feature to enhance the sense of arrival.



Exterior Lighting Information

Light Fixture Manufacturer: LED Light Fixtures

DecorsUSA, LLC Phone: 866.248.6300 Email: sales@decorsusa.com Web: www.decorsusa.com

Warranty Information for DecorsUSA Light Fixtures

Limited Twenty-Four Month Warranty

DecorsUSA, LLC warrants to the original purchaser and not for the benefit of anyone else, that this product at the time of its sale by DecorsUSA is free of defects in materials and workmanship under normal and proper use for twenty-four months from the purchase date. This warranty applies to DecorsUSA, LLC products purchased and installed in the USA. This warranty excludes and there is disclaimed liability for labor for removal of this product or reinstallation. This warranty is void if this product is installed improperly or in an improper environment, overloaded, misused, opened, abused/alterd in any manner, or is not used under normal operating conditions or not in accordance with any labels or instructions. There are no other or implied warranties of any kind, including merchantability and fitness for a particular purpose, but if any implied warranty is required by the applicable jurisdiction, the duration of any such implied warranty, including merchantability and fitness for a particular purpose is limited to two years. DecorsUSA, LLC is not liable for incidental, indirect, special, or consequential damages, including without limitation, damage to, or loss of use of, and equipment, lost sales or profits or delay or failure to perform this warranty obligation. The remedies provided herein are the exclusive remedies under this warranty, whether based on contract, tort or otherwise.

What we will do:

If your DecorsUSA, LLC product is defective, we will repair or, at our option, replace it at no charge to you. Purchaser may contact or warranty support by calling 1-866-248-6300 (Toll Free) or via e-mail at support@decorsusa.com.

DecorsUSA, LLC shall correct such defects by repair or replacement; provided that the product is returned within the first twenty-four months of purchase date, along with a proof of purchase and a description of the problem to:

DecorsUSA, LLC Attention: Quality Assurance, 5005 Newport Drive Suite 204, Rolling Meadows, IL 60008.