

Woodspring Suites

City Submittal Package

ATTACHMENT C





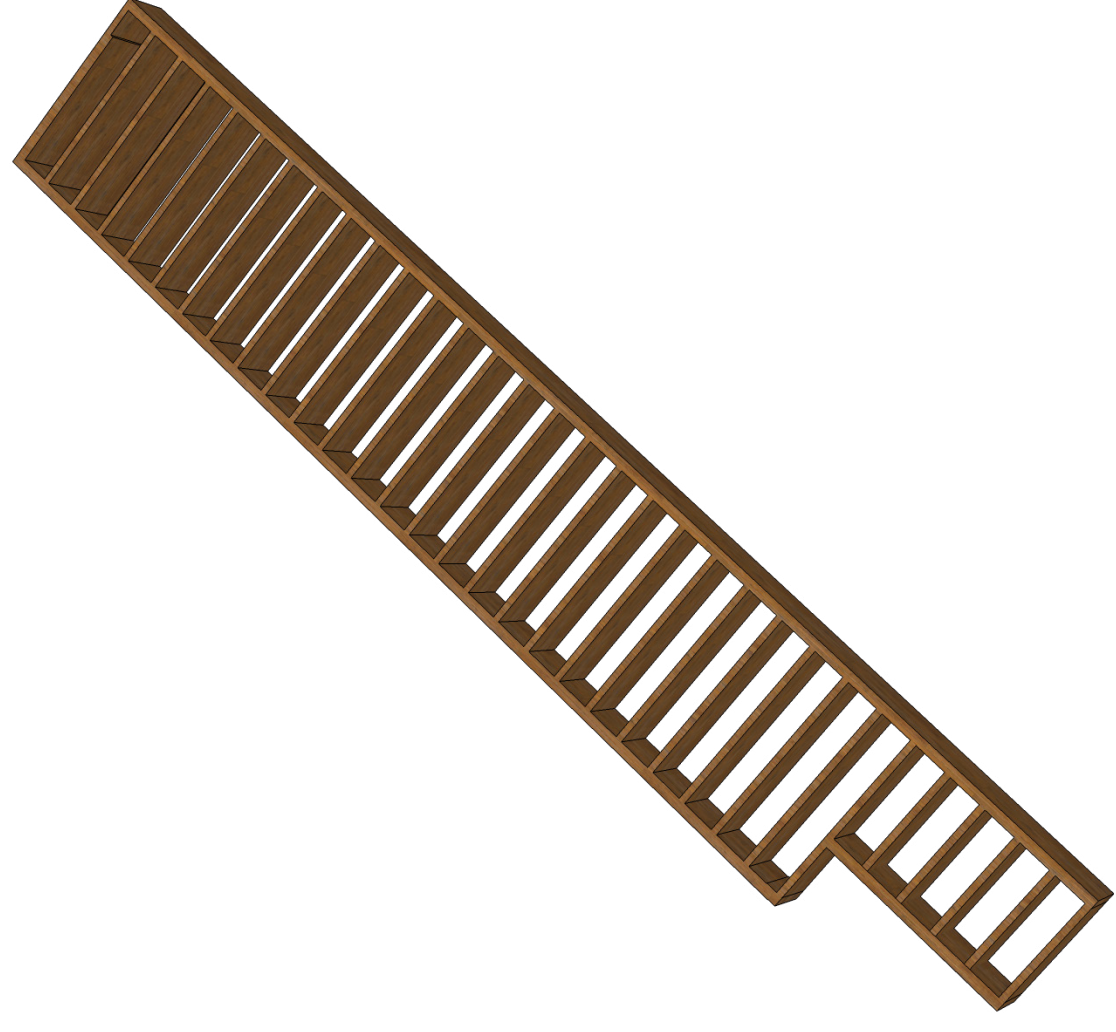




Hardie Board Siding - Bark



Woodtone Siding - Old Cherry



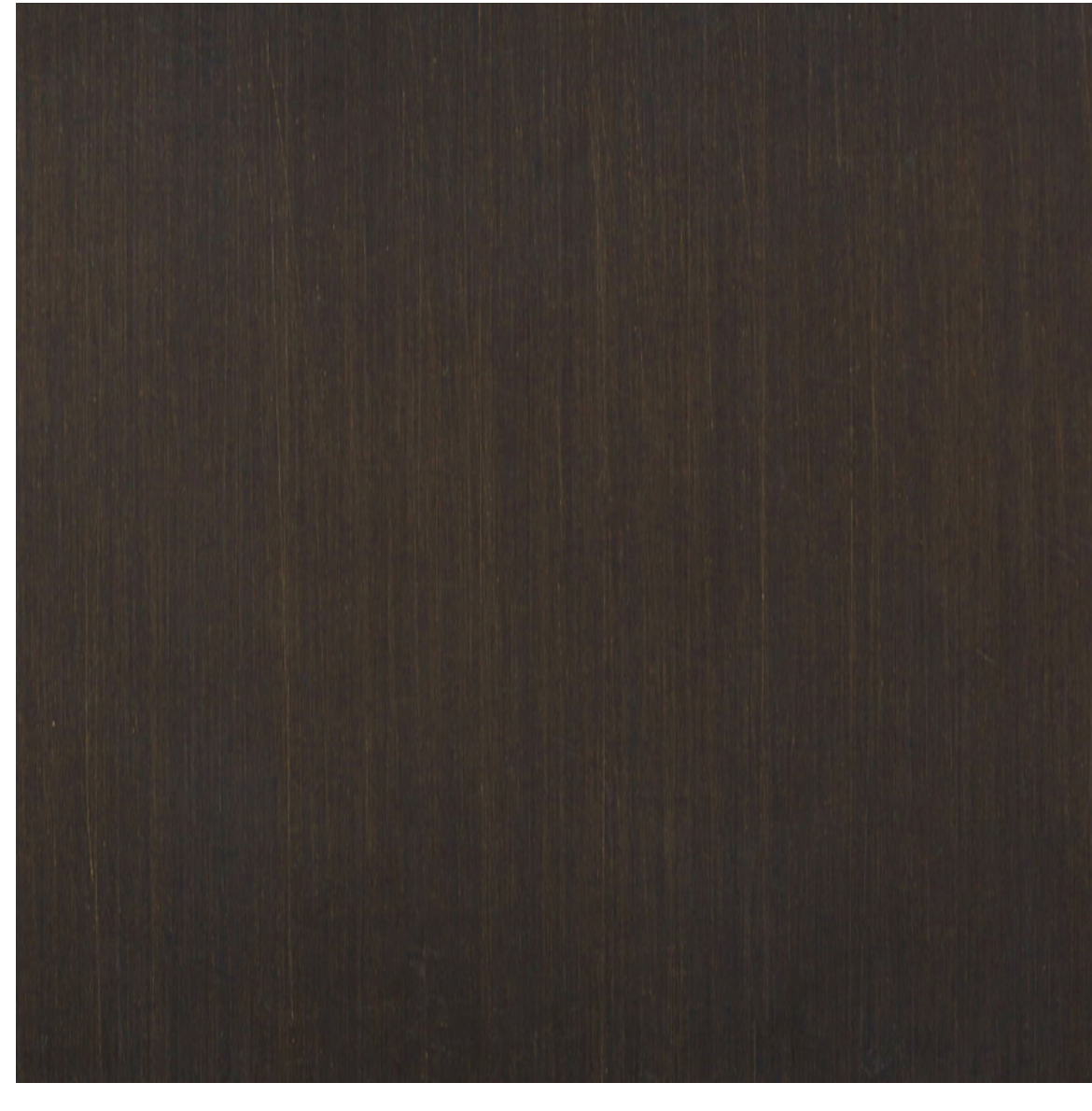
Sunscreen Structure
Wrapped in Woodtone Siding



Asphalt Shingles



Stucco/EIFS - Winter Eve



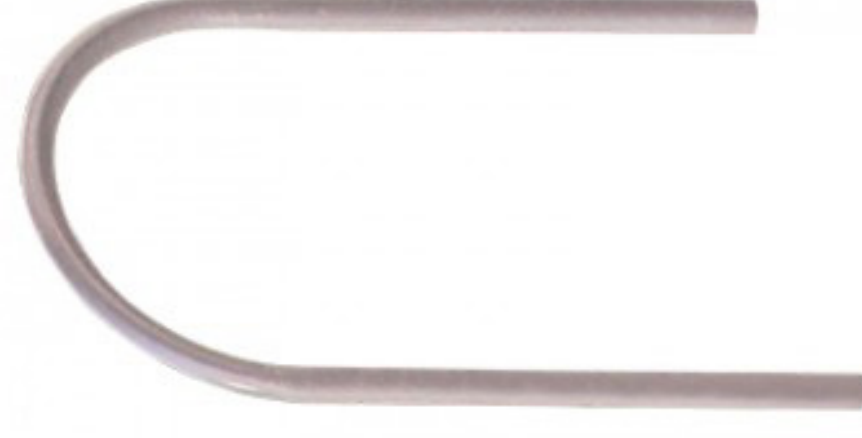
Metal - Dark Bronze



Interstate Thin Brick - Ash



Aluminum Frame -
Dark Bronze



Park-It 2-Bike Rack -
Galvanized Steel



Broom-Finish Concrete

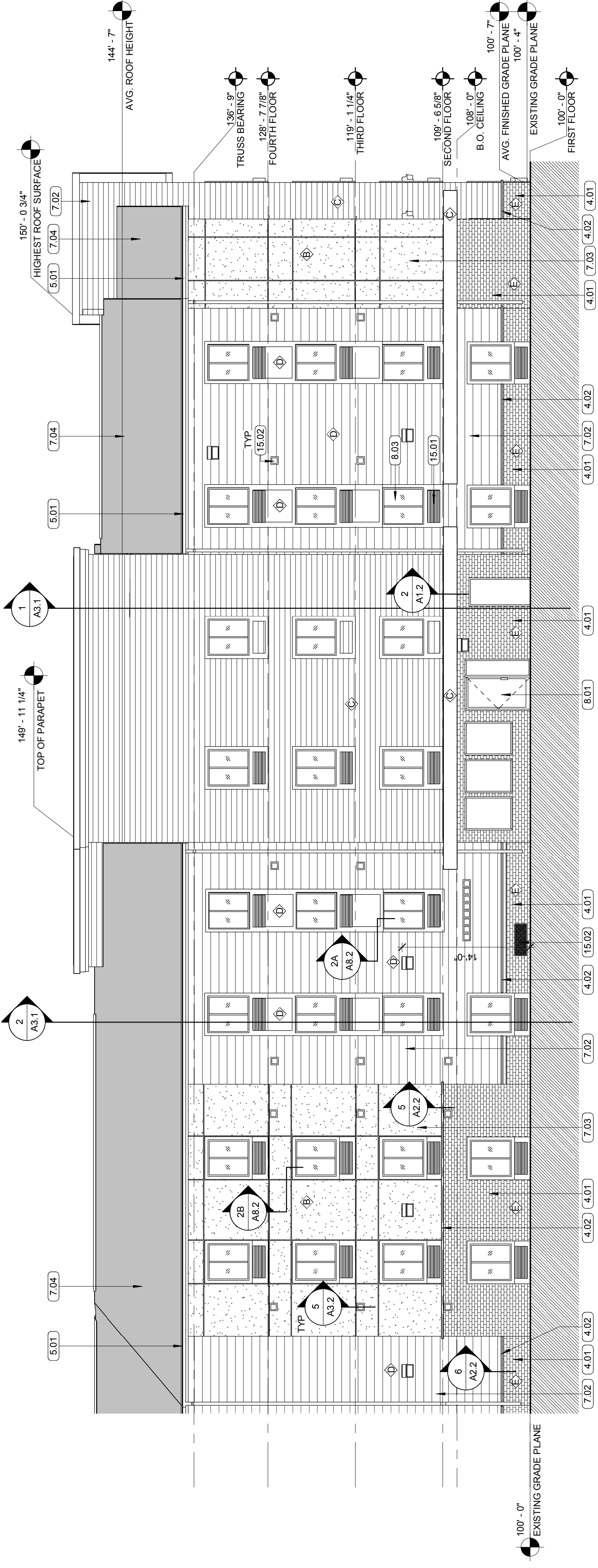
KEYNOTE LEGEND

1.01	SIGNAGE BY OWNER UNDER SEPARATE PERMIT
4.01	ADHERED MANUFACTURED THIN BRICK; REF INSTALLATION DETAIL 8-A&5
4.02	ADHERED MANUFACTURED THIN BRICK DRIPLEDGE
5.01	6" HALF ROUND ALUMINUM GUTTERS AND ROUND DOWNSPOUTS
6.01	CEMENT BOARD TRIM/EIFS TRIM: 5/4 X4
6.06	CEMENT BOARD PANEL
7.02	7" EXPOSURE CEMENT BOARD LAP SIDING; SEE COLOR SCHEDULE
7.03	1 1/2" EXTERIOR EIFS; SEE COLOR SCHEDULE
7.04	COMPOSITION SHINGLES
8.01	GLASS / ALUMINUM DOOR
8.03	SLIDING WINDOW, TYP.; SEE SPECS
15.01	THRU-WALL HVAC UNIT
15.02	MECHANICAL LOUVERS; REF MECH. DWGS. PAINT TO MATCH ADJACENT

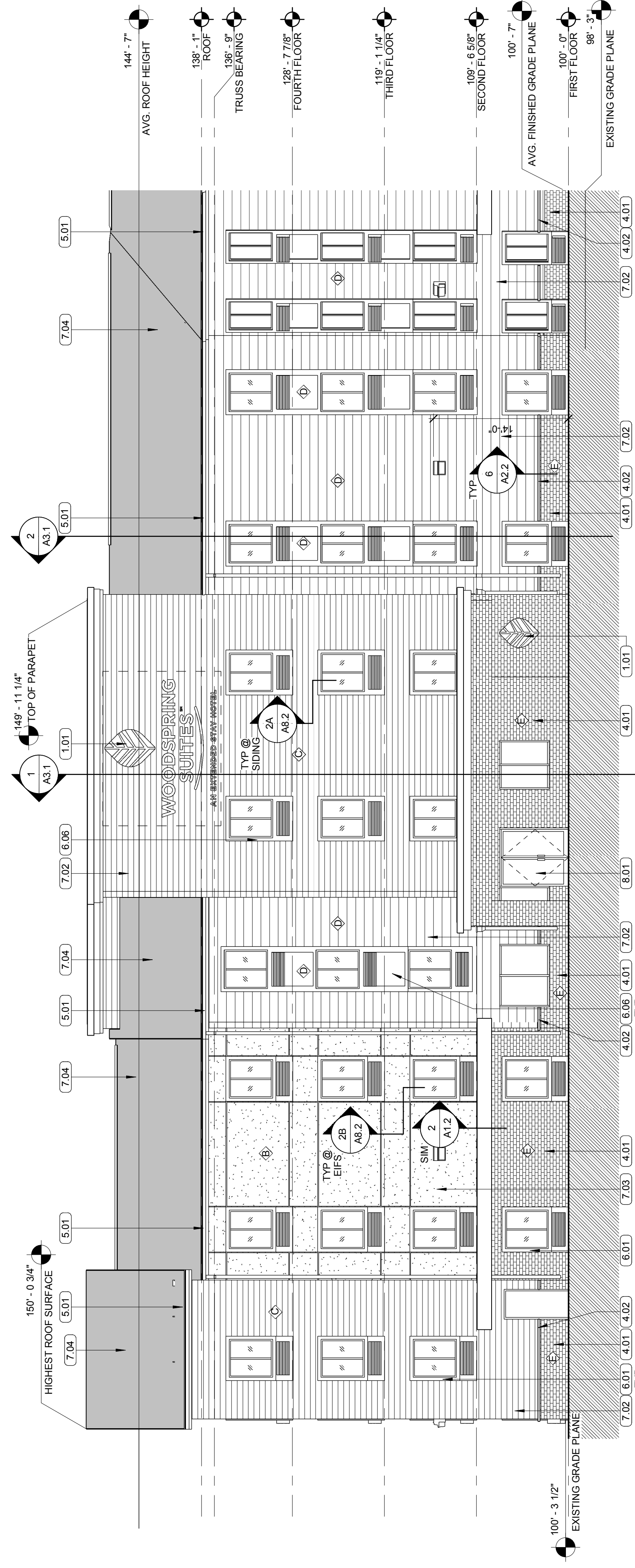
GENERAL NOTE:
 PROVIDE WEATHER BARRIER OVER ALL EXTERIOR SHEATHING PRIOR TO THE INSTALLATION OF ANY EXTERIOR FINISHES. PROVIDE ALL WEATHERING ACCESSORIES TO FULLY FLASH AND COUNTER-FLASH AT ALL WINDOWS, DOORS, AND EXTERIOR PENETRATIONS. PROVIDE A WEATHER TIGHT SEAL AT ALL SHIMES, COORDINATE TO SHIMES WITH SURROUNDING MATERIALS. PROVIDE WEATHER TIGHT SEAL AT ALL OPENINGS.

COLOR SCHEDULE:

- A COLOR: DARK BRONZE*
 - B COLOR: STUCCO/EFS
 - C COLOR: DRYVIT 456 "OYSTER SHELL"
 - D COLOR: WOODTONE - RUSTIC SERIES "OLD CHERRY"
 - E COLOR: HARDIE BOARD SIDING "TIMBER BARK"
- MASONRY: INTERSTATE BRICK
 STYLE: RUNNING BOND
 COLOR: ASH



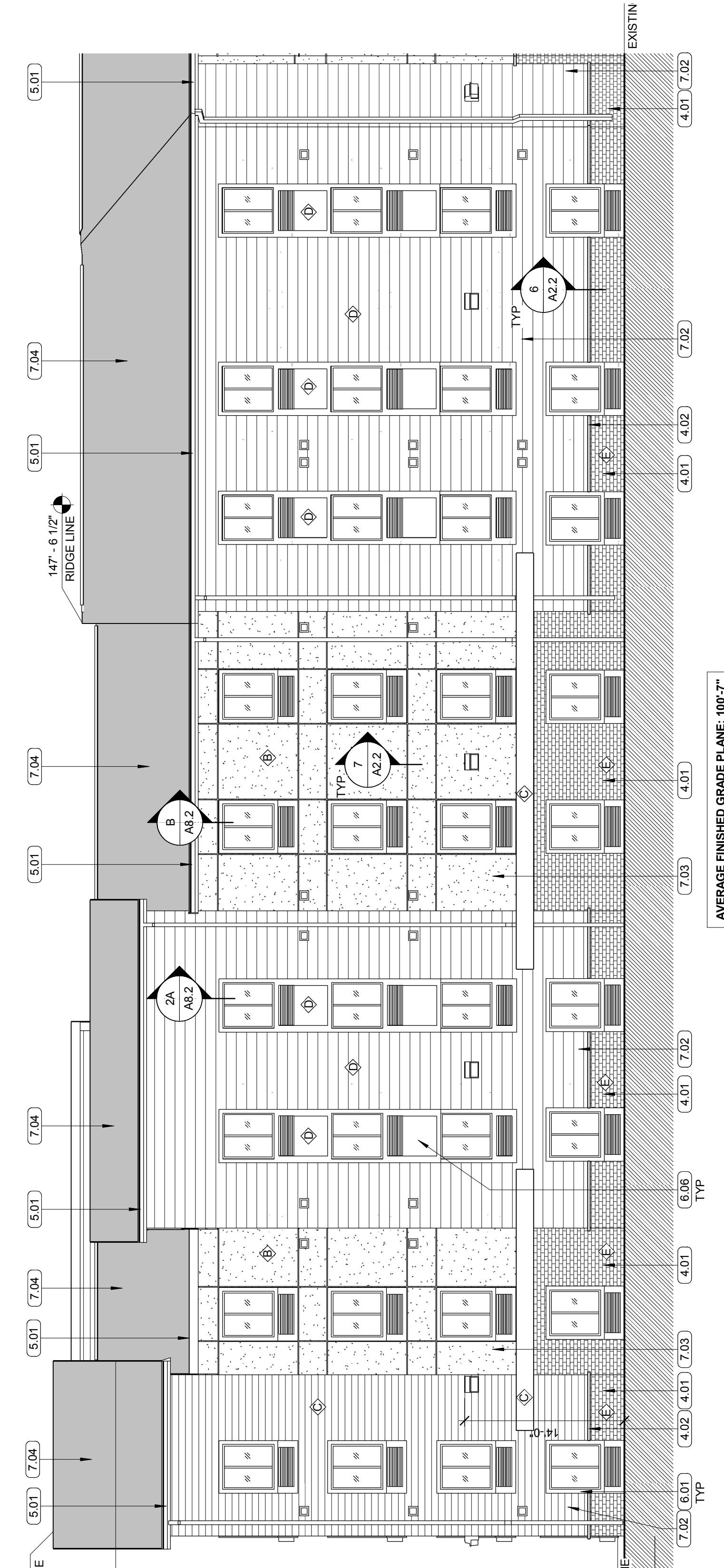
2 REAR ELEVATION
 1/8" = 1'-0"



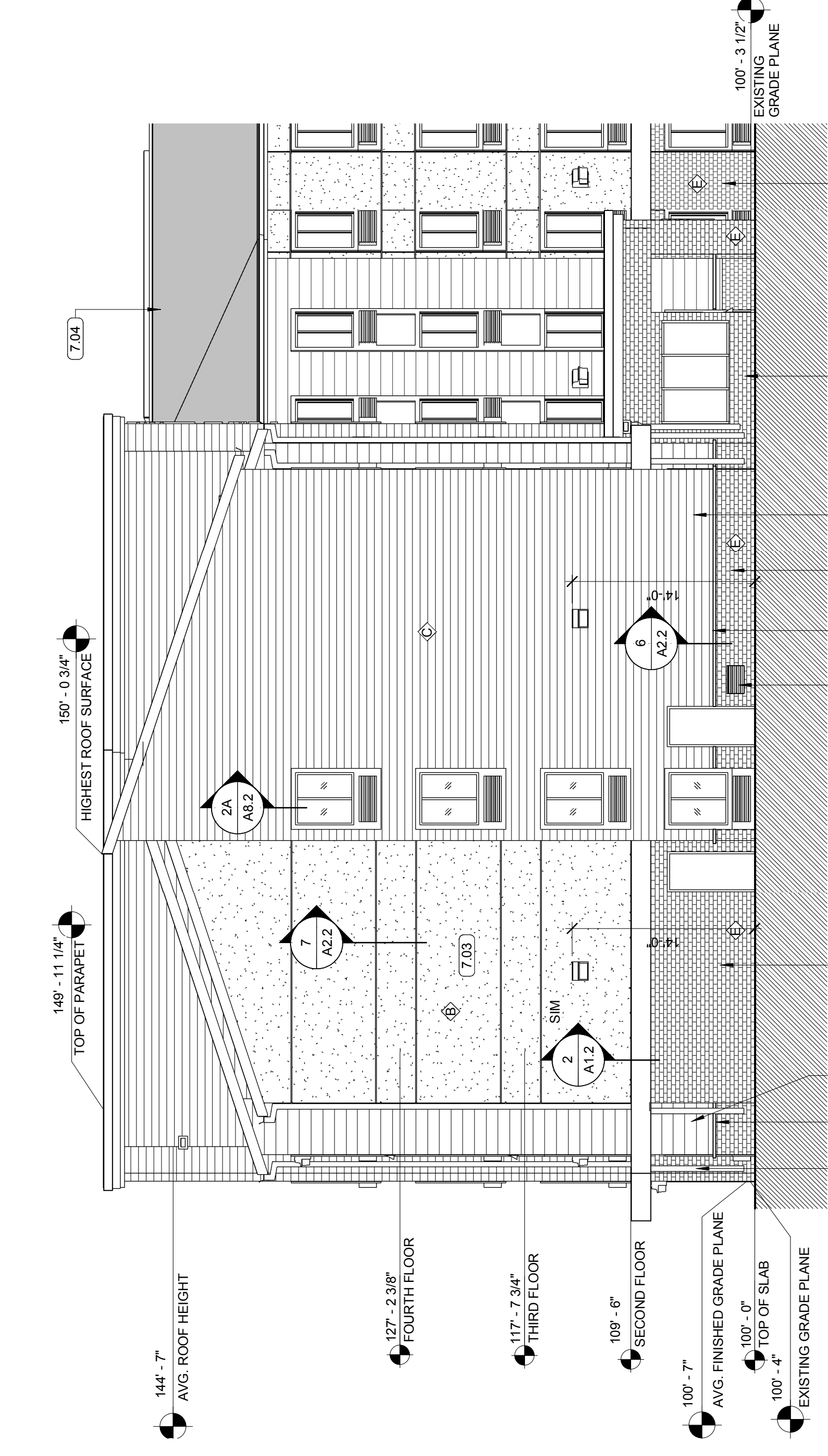
1 FRONT LEFT ELEVATION
 1/8" = 1'-0"



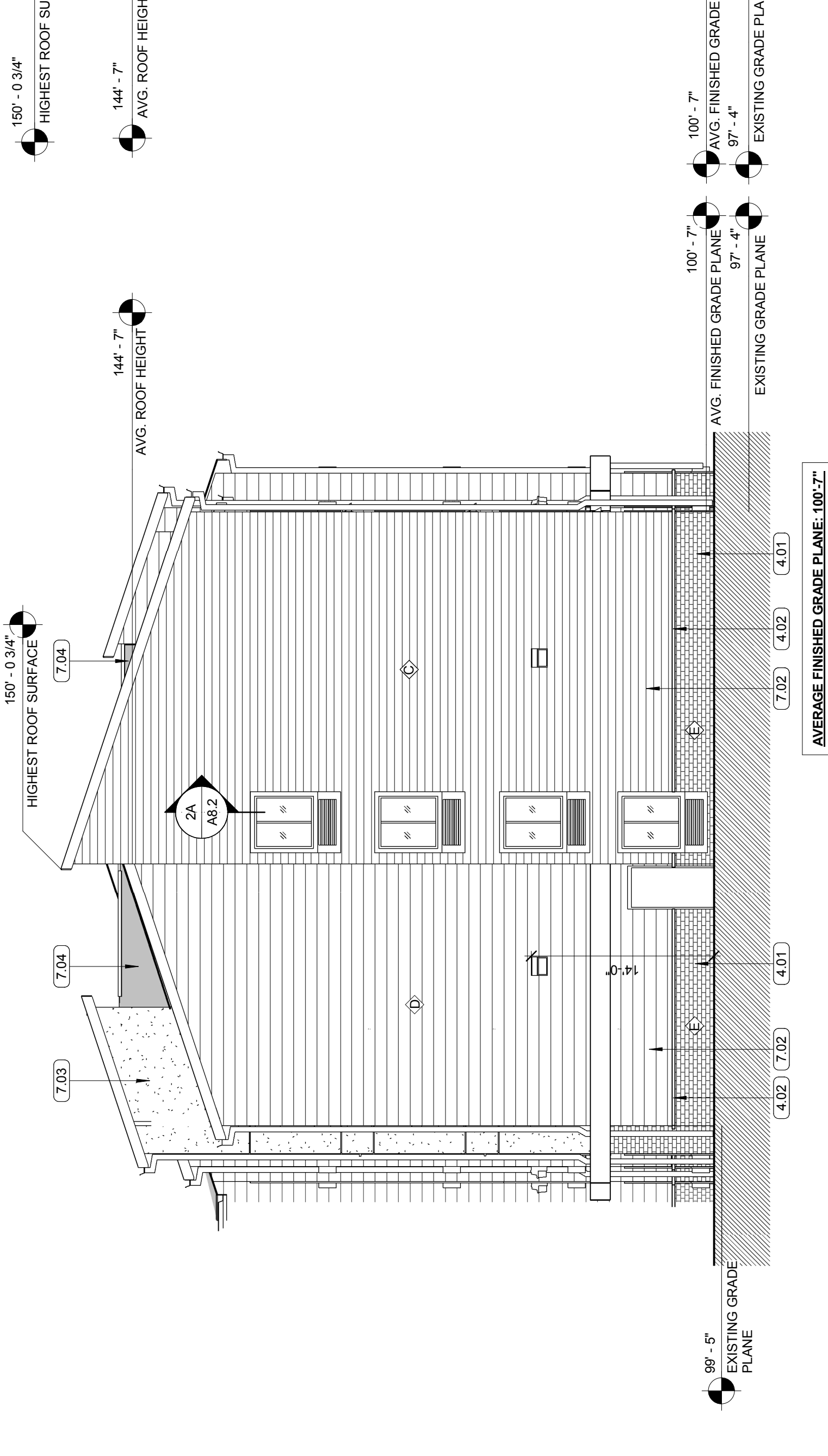
3 FRONT RIGHT ELEVATION
1/8" = 1'-0"



1 REAR LEFT ELEVATION
1/8" = 1'-0"

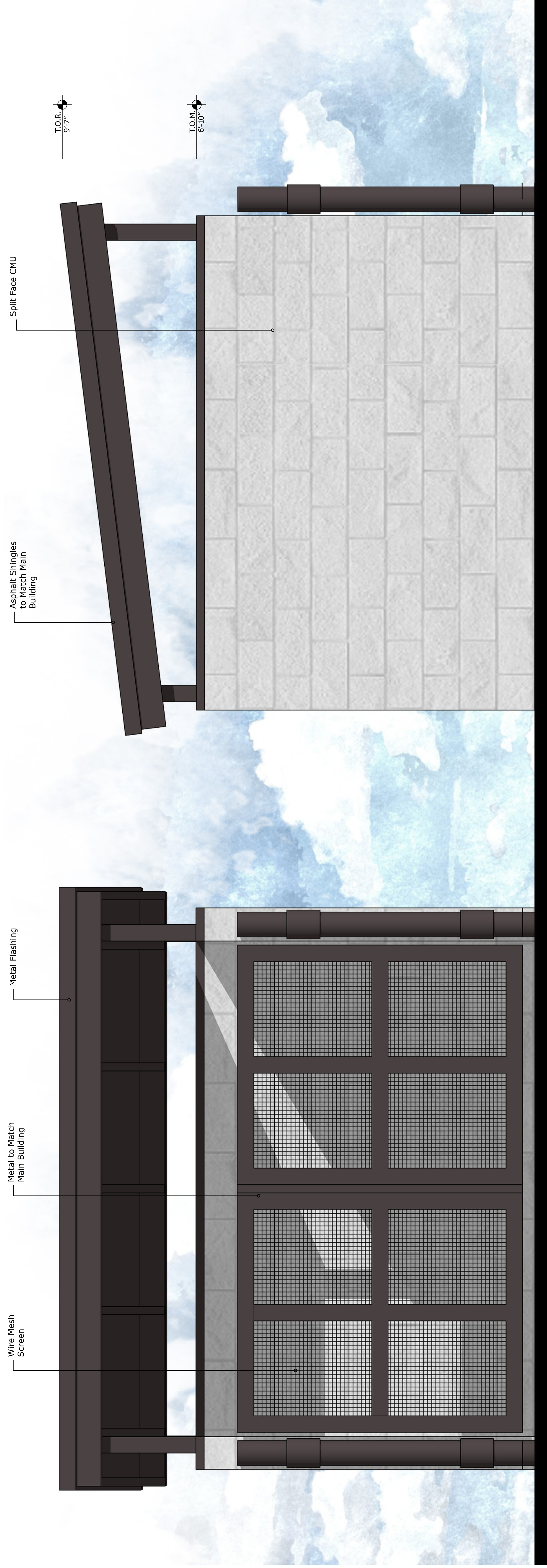


4 LEFT SIDE ELEVATION
1/8" = 1'-0"



2 RIGHT ELEVATION
1/8" = 1'-0"

DESIGN REPRESENTATION ONLY - NOT FOR CONSTRUCTION - The building images shown are a representation of the current design intent only. The building images may not reflect variations in color, tone, hue, tint, shading, ambient light intensity, materials, texture, contrast, font style, construction variations required by building codes or inspectors, material availability or final design detailing.



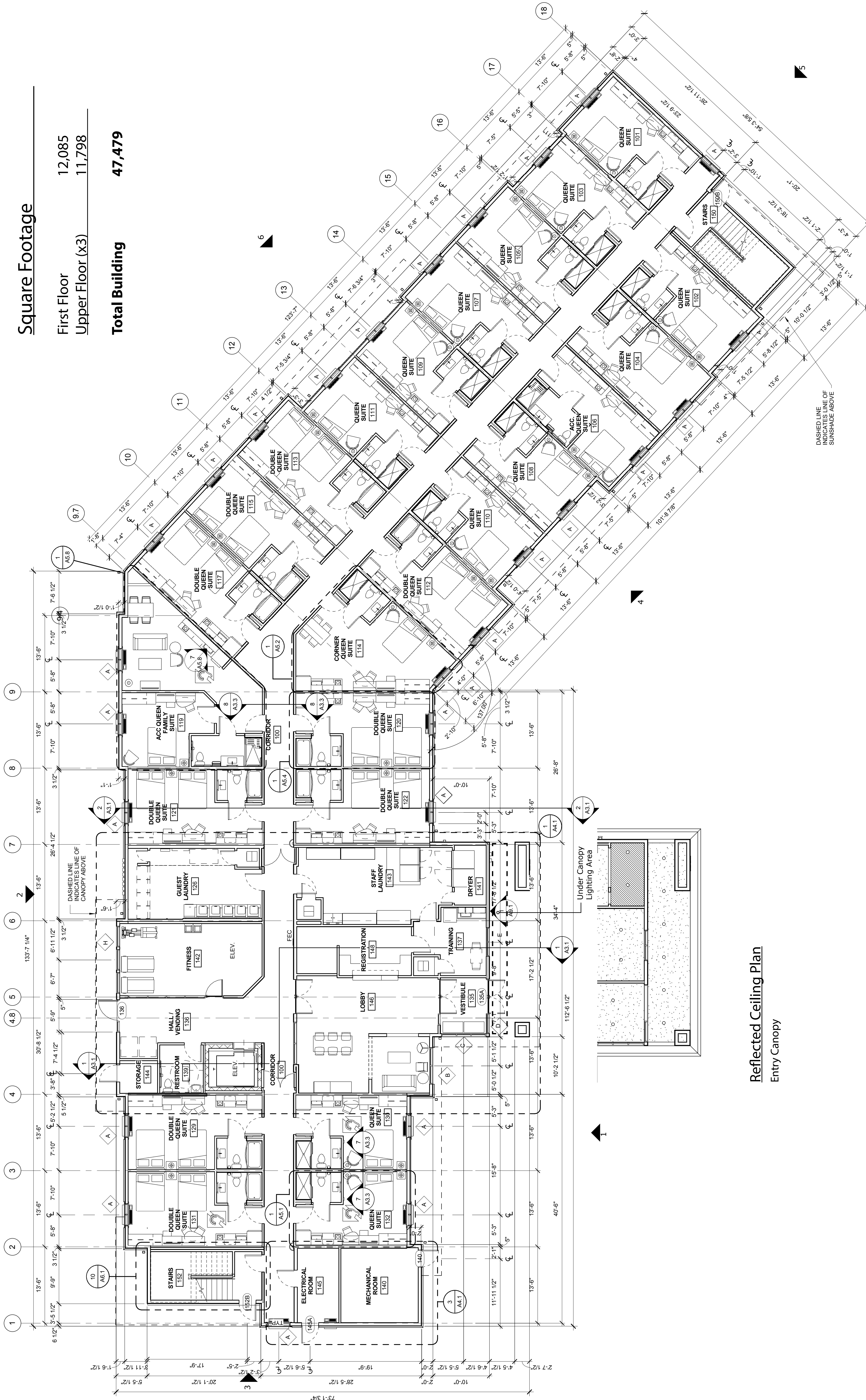
DUMPSTER ELEVATION

Square Footage

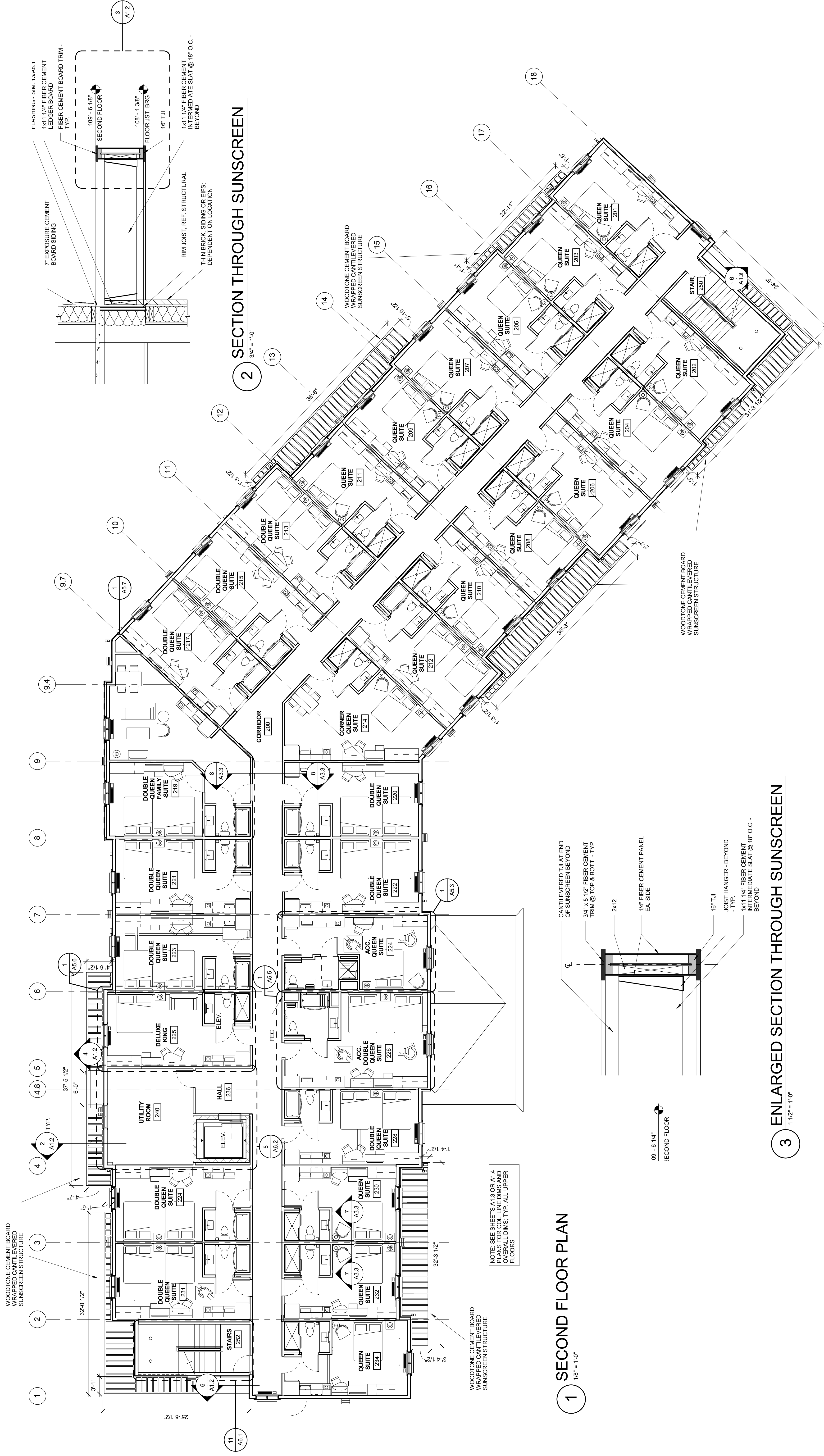
First Floor 12,085

Upper Floor (x3) 11,798

Total Building 47,479



Reflected Ceiling Plan
Entry Canopy



1 SECOND FLOOR PLAN
1/8" = 1'-0"

3 ENLARGED SECTION THROUGH SUNSCREEN
1 1/2" = 1'-0"

2 SECTION THROUGH SUNSCREEN
3/4" = 1'-0"

NOTE: SEE SHEETS A1.3 OR A1.4 PLANS FOR COL. LINE DIMS AND OVERALL DIMS. TYP. ALL UPPER FLOORS

