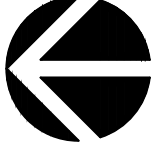


Sec 15, Twn 23N, Rng 4E WM
Call before you Dig.
Scale Horiz 1"=20'
Vert 1"=20'
8-1-1 or
1-800-424-5555
UNDERGROUND SERVICE (USA)



RE-SUBMITTAL
CUP

COUGHLIN
PORTER
LUNDEEN
801 SECOND AVENUE, SUITE 900
SEATTLE, WA 98104
(206) 343-0460
www.cplinc.com

TUKWILA BIRTH TO KINDERGARTEN CENTER
TUKWILA SCHOOL DISTRICT
4610 S. 142nd Street, TUKWILA WA 98188

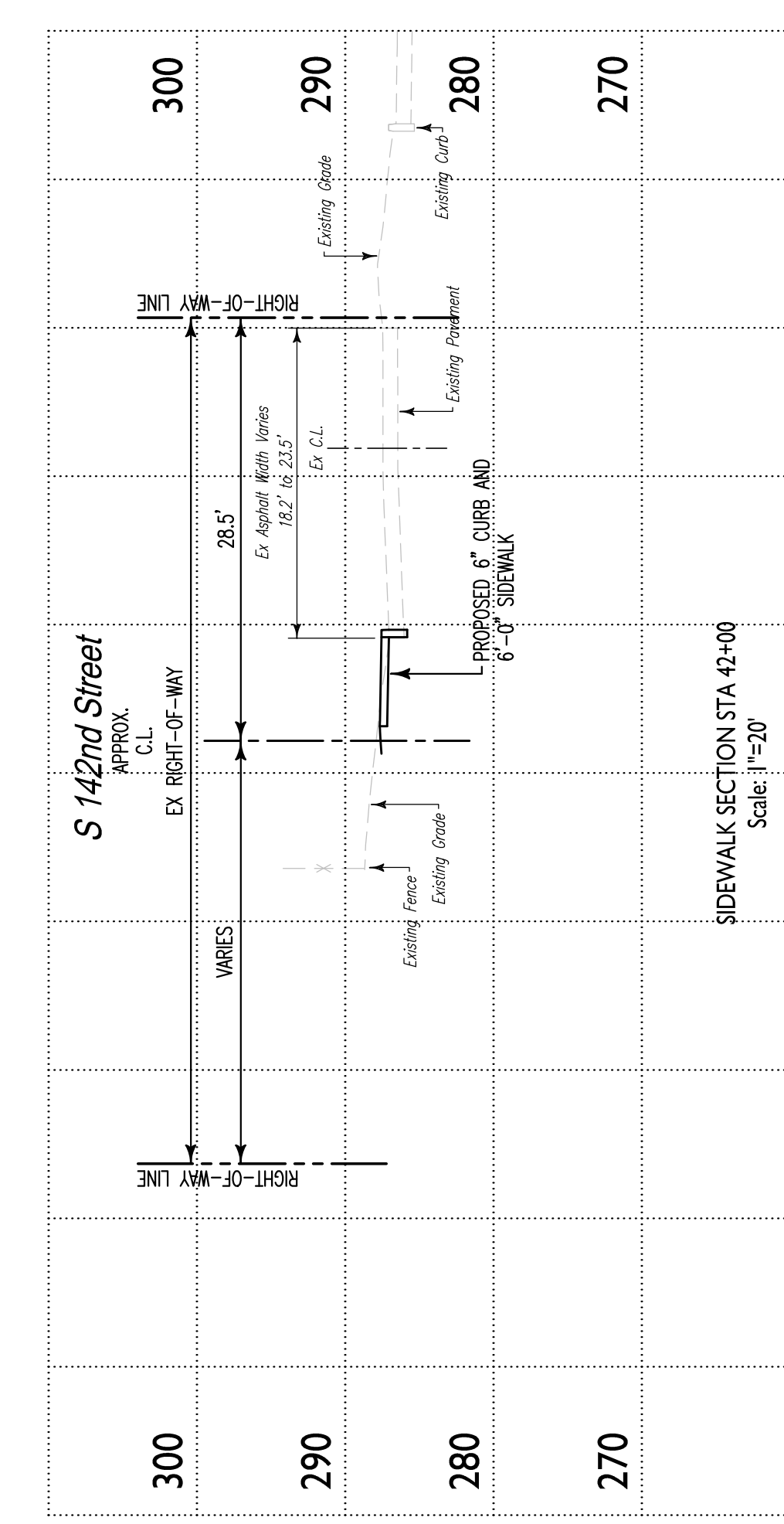
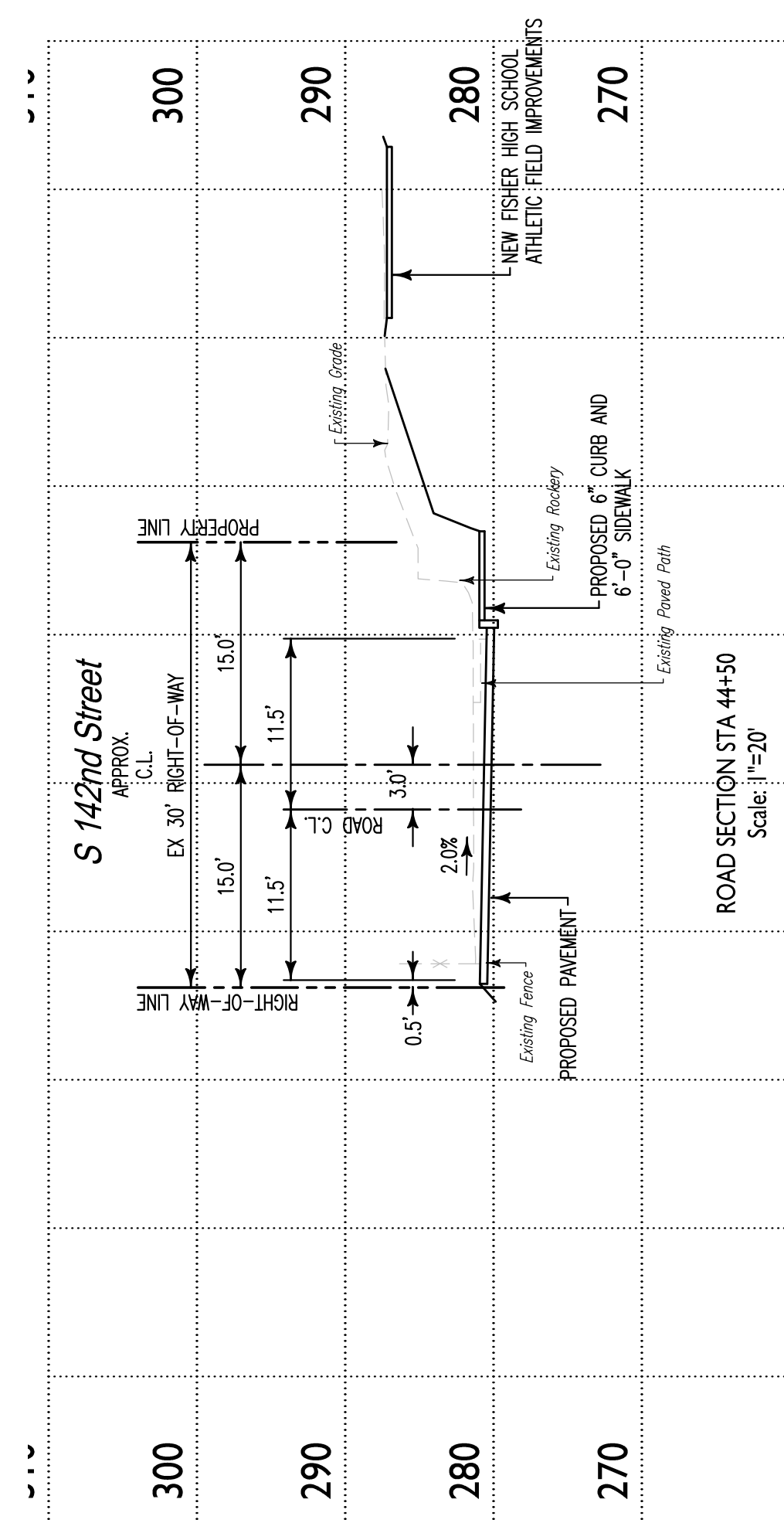
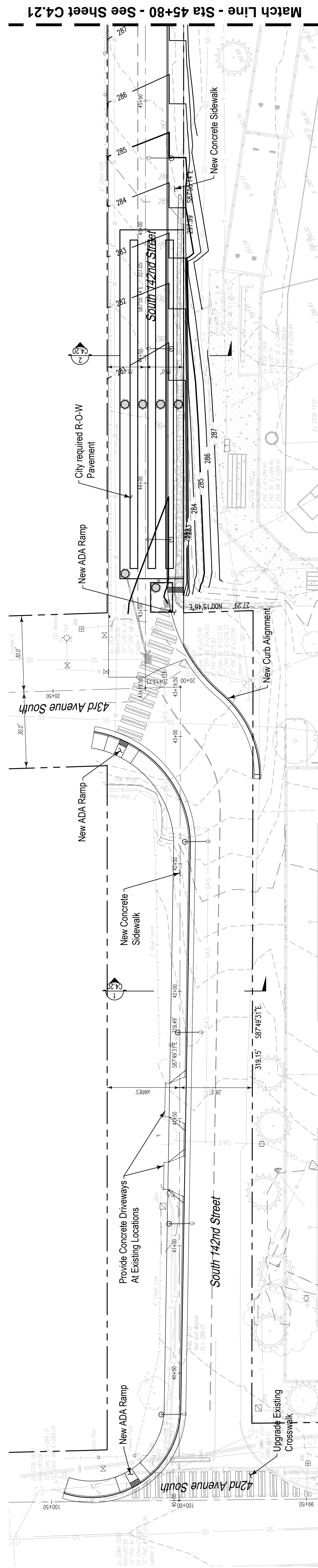
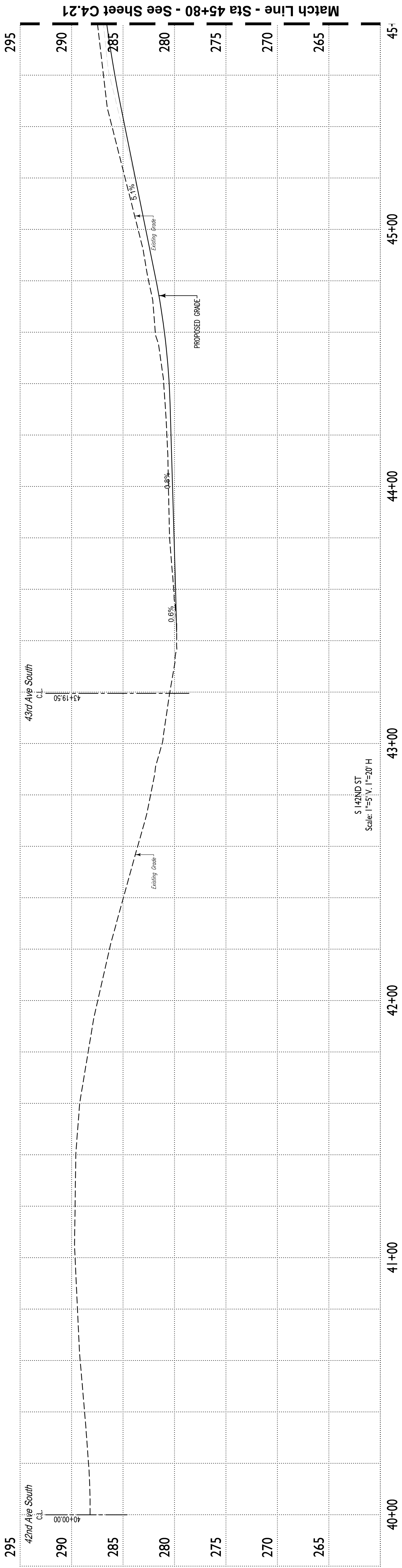


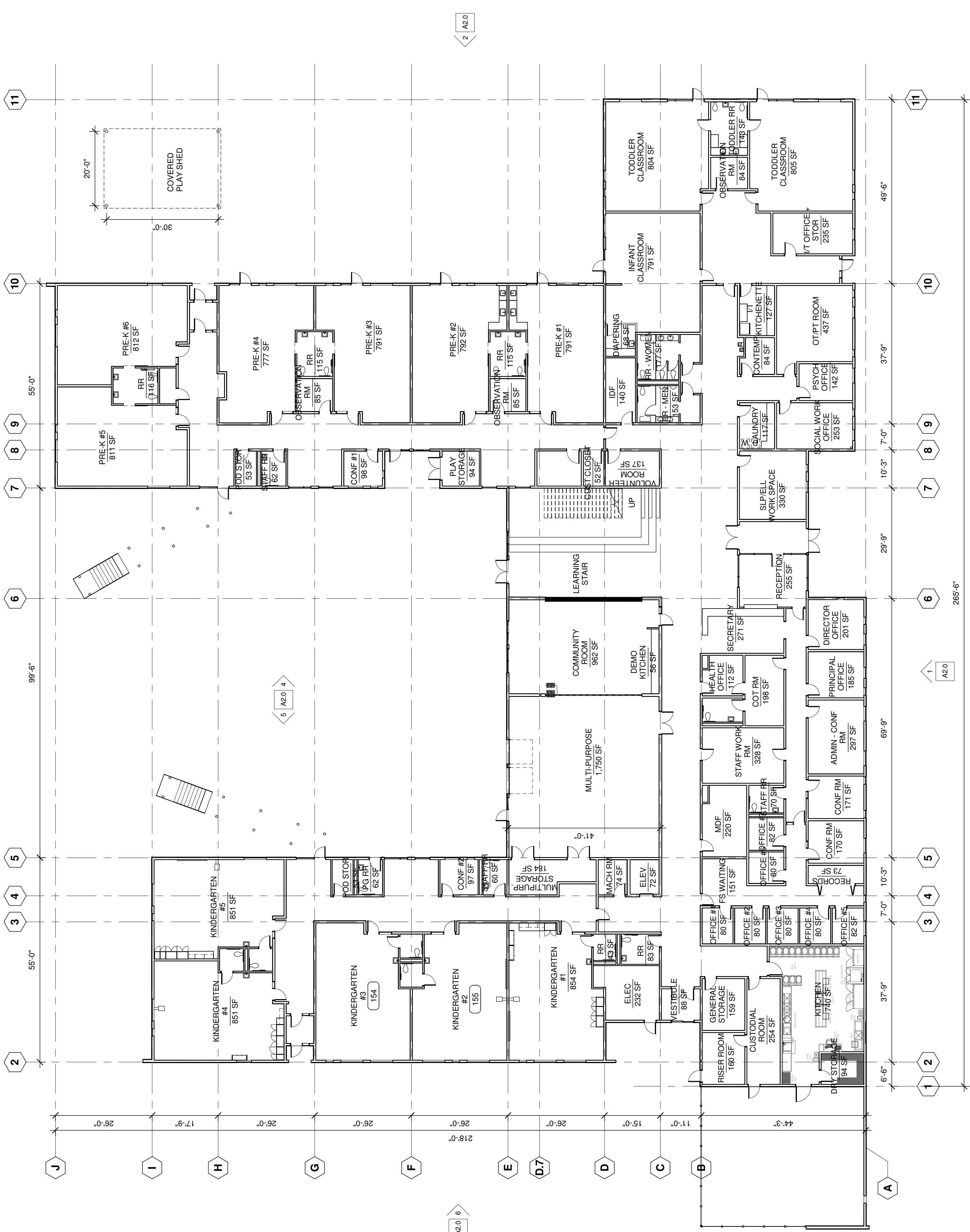
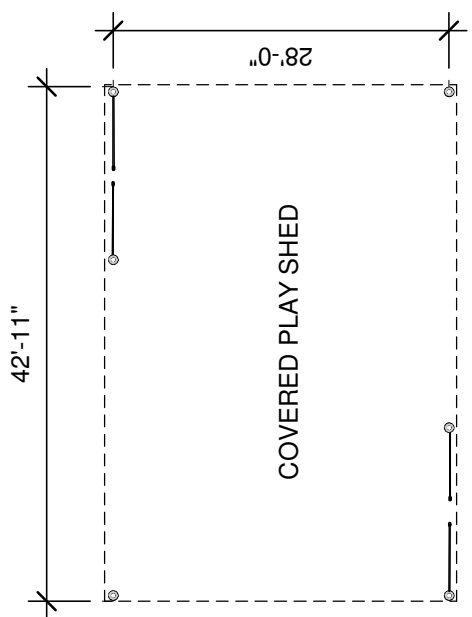
NAC
ARCHITECTURE
nacarchitecture.co
2025 FIRST AVENUE, SUITE 300
SEATTLE, WA 98121
P: 206-441-1622

CPL NO C180030-04
DRAWN SAS
CHECKED JAJ
DATE 02-27-2017

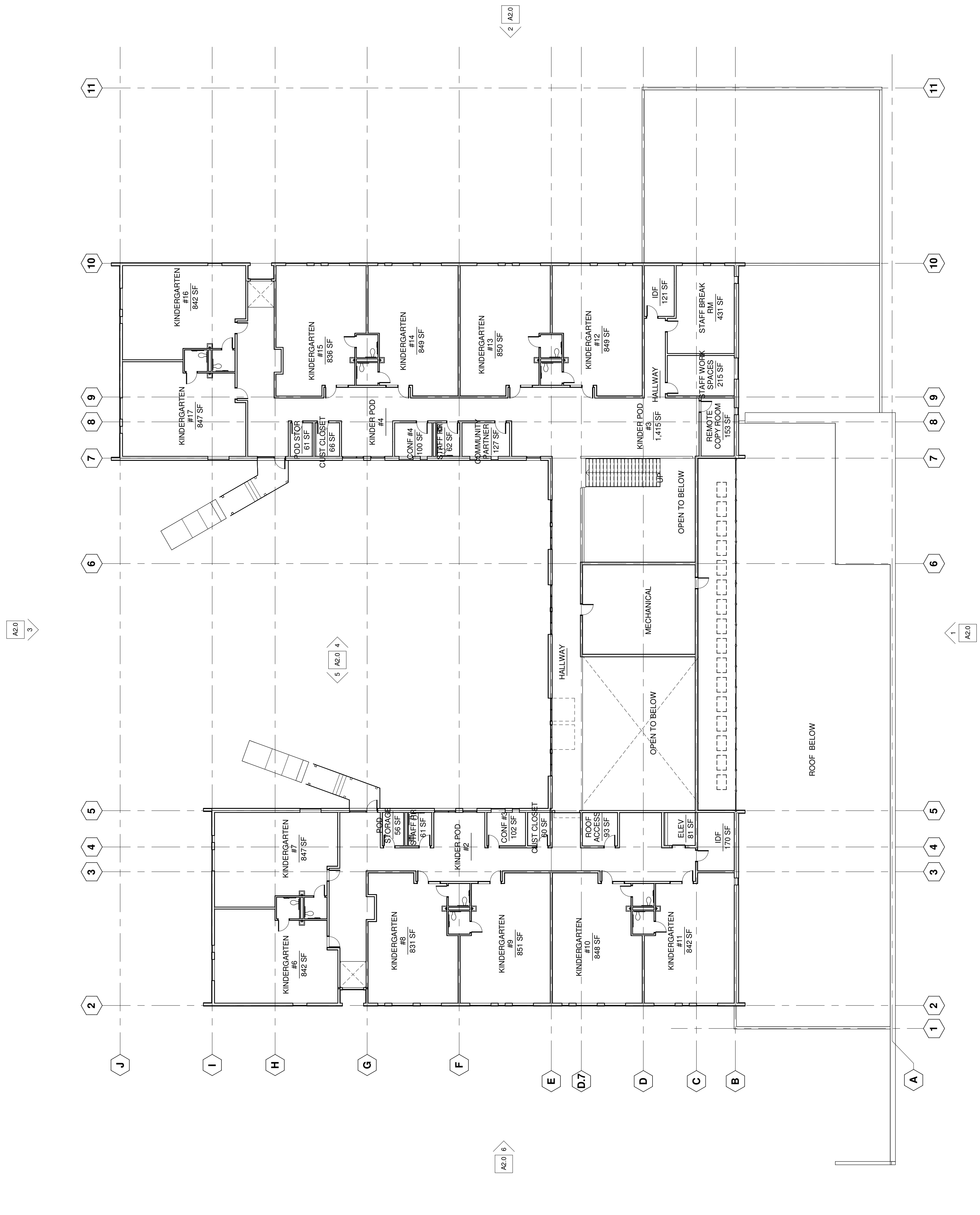
ENTRY DRIVE
PLAN AND PROFILE

C4.20

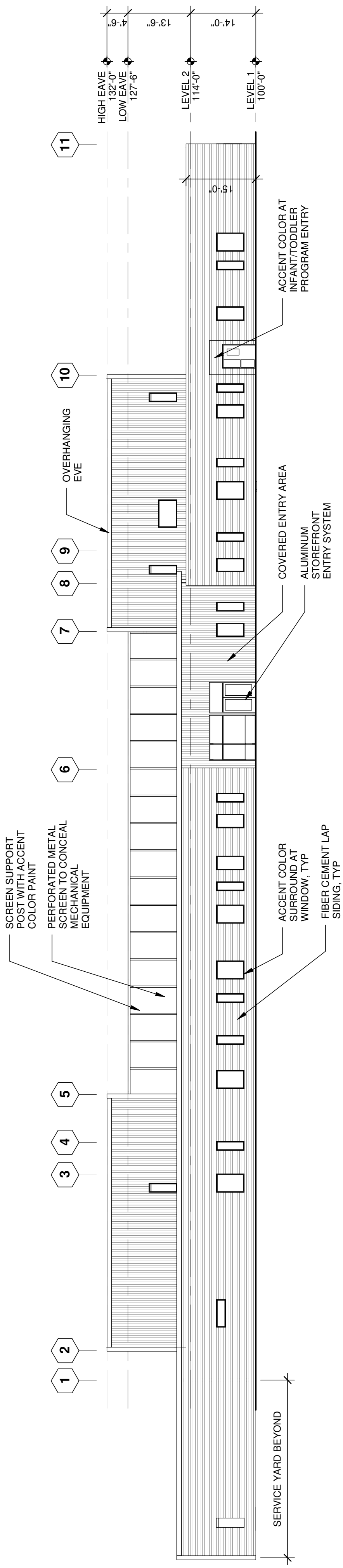




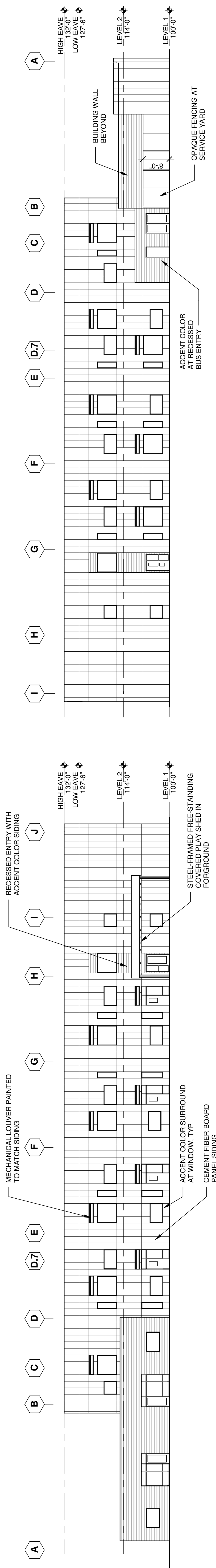
PLAN NORTH
TRUE NORTH
1 LEVEL 1 FLOOR PLAN
Scale: 1/16" = 1'-0"



PLAN
TRUE NORTH
LEVEL 2 FLOOR PLAN
Scale: 1/16" = 1'-0"

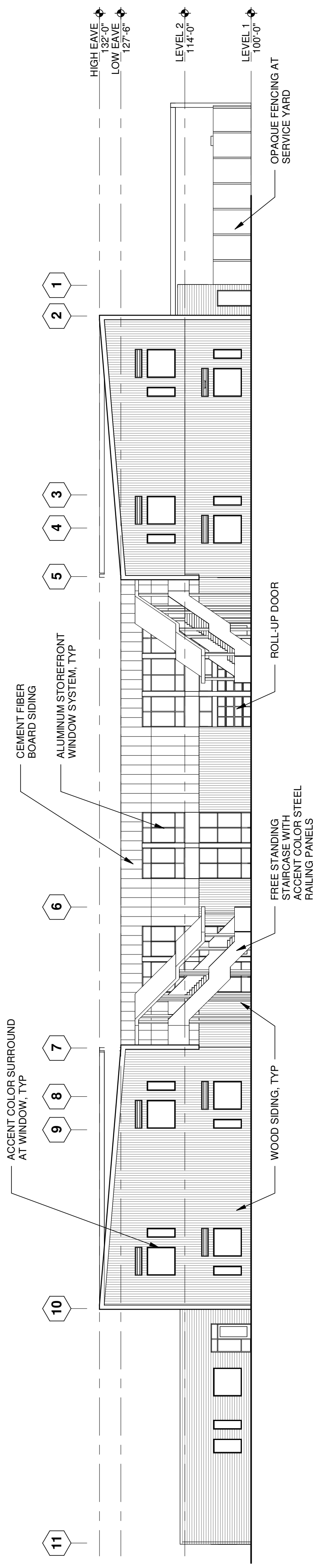


1 SOUTH ELEVATION
Scale: 1/16" = 1'-0"



2 EAST ELEVATION
Scale: 1/16" = 1'-0"

6 WEST ELEVATION
Scale: 1/16" = 1'-0"



3 NORTH ELEVATION
Scale: 1/16" = 1'-0"



4 COURTYARD EAST ELEVATION
Scale: 1/16" = 1'-0"



5 COURTYARD WEST ELEVATION
Scale: 1/16" = 1'-0"



2 ENTRANCE PERSPECTIVE
NTS



1 DROPOFF PERSPECTIVE
NTS



6 SOUTH ELEVATION
NTS



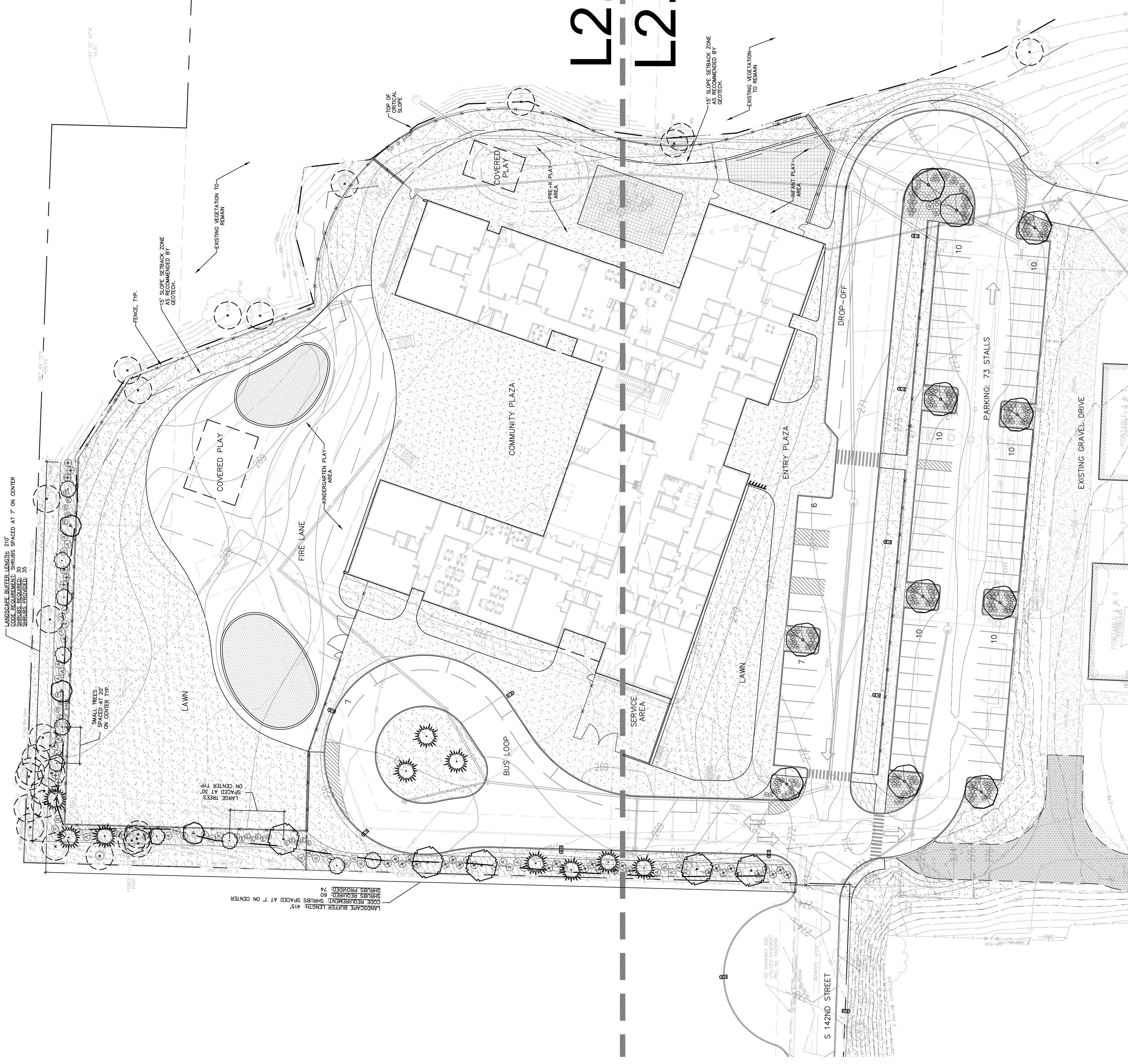
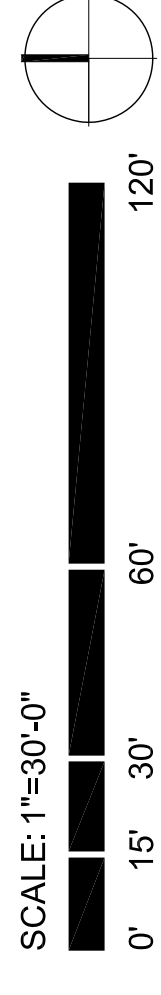
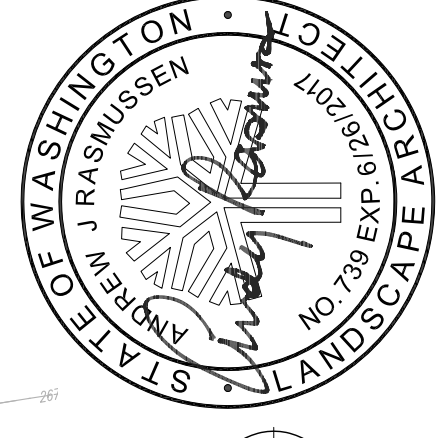
5 EAST ELEVATION
NTS



4 NORTH ELEVATION
NTS



3 WEST ELEVATION
NTS



LANDSCAPE LEGEND (SYMBOLS SHOWN AT 1"=30'-0")

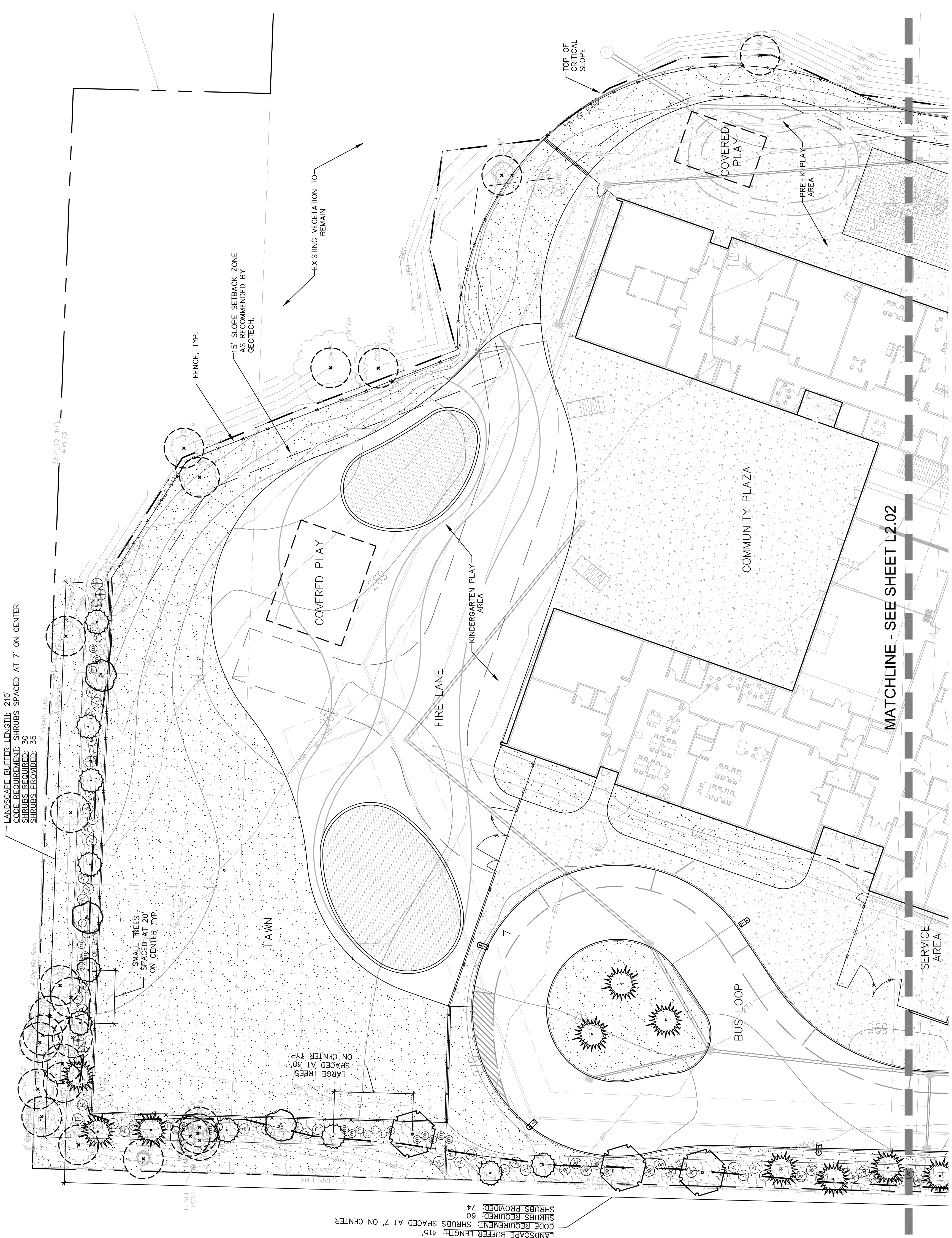
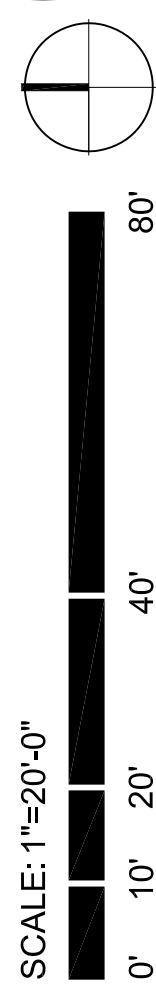
SYMBOL	SPECIES	QUANTITY (FOR REFERENCE ONLY)	SIZE/CONDITION SPACING AS SHOWN ON PLAN
	SPECIMEN/SHADE TREES		
	ACER FREEMANII 'AUTUMN BLAZE' / AUTUMN BLAZE MAPLE	11	MIN. 2" CALIPER, 10'-12" MIN. HT. WELL BRANCHED, B&B
	NYSSA SYLVATICA / BLACK TUPELO	5	MIN. 2" CALIPER, 10'-12" MIN. HT. WELL BRANCHED, B&B
	ACER CIRCINATUM / VINE MAPLE	3	MULTI STEMMED, MIN. (3) 1/2" CALIPER TRUNKS, 6'-8' HT., WELL BRANCHED, B&B
	CONIFEROUS TREES		
	PSUEDOTSUGA MENZIESII / DOUGLAS FIR	10	MIN. 6-7" HT. FULL AND BUSHY TO BASE, B&B
	THUJA PLICATA 'MORGAN' / WESTERN RED CEDAR	10	MIN. 6-7" HT. FULL AND BUSHY TO BASE, B&B
	SHRUBS AND GRASSES		
	CORNUS STOLONIFERA 'KELSEY' / KELSEY DOGWOOD	105	15-18" HT. & SPR., FULL & BUSHY B&B OR CONT.
	CORNUS STOLONIFERA 'ARCTIC FIRE' / ARCTIC FIRE RED TWIG DOGWOOD	38	15-18" HT. & SPR., FULL & BUSHY B&B OR CONT.
	MAHONIA AQUIFOLIUM 'COMPACTA' / COMPACT OREGON GRAPE	27	18-24" HT. & SPR., FULL & BUSHY B&B OR CONT.
	SPIRAEA BETULIFOLIA 'TOR' / BIRCHLEAF SPIREA	83	18-24" HT. & SPR., FULL & BUSHY B&B OR CONT.
	ARBUTUS UNEDO 'COMPACTA' / DWARF STRAWBERRY TREE	38	24-30" HT. & SPR., FULL & BUSHY B&B OR CONT.
	RIBES SANGUINEUM / RED FLOWERING CURRANT	9	24-30" HT. & SPR., FULL & BUSHY B&B OR CONT.
	GROUNDCOVER		
	FRAGARIA CHILOENSIS / BEACH STRAWBERRY	875	1 GAL. POTS @ 24" O.C. TRIANGULAR SPACING START FIRST ROW 12" FROM EDGE OF PLANTING AREA
	NATIVE GROUNDCOVER MIX		
	40% GALLTHERIA SHALLON / SALAL	760	1 GAL. POTS @ 24" O.C. TRIANGULAR SPACING START FIRST ROW 12" FROM EDGE OF PLANTING AREA
	40% MAHONIA REPENS / CREEPING MAHONIA	760	1 GAL. POTS @ 24" O.C. TRIANGULAR SPACING START FIRST ROW 12" FROM EDGE OF PLANTING AREA
	20% POLYSTICHUM MUNIFOLIUM / SWORD FERN	380	1 GAL. POTS @ 24" O.C. TRIANGULAR SPACING START FIRST ROW 12" FROM EDGE OF PLANTING AREA
	LAWN		
	HYDRO-SEEDED LAWN	63,050 SF	SEE SPECIFICATIONS
	EXISTING TREES		
	EXISTING TREE		EXISTING TREE TO REMAIN, SAVE AND PROTECT

LANDSCAPE NOTES:

- SUBMIT COLOR PHOTOS REPRESENTATIVE OF PROPOSED NURSERY STOCK FOR EACH PLANT SPECIES AND LANDSCAPE MATERIAL APPROVAL OF PLANT MATERIAL WILL NOT BE PROVIDED UNTIL DELIVERY AND REVIEW ON SITE.
- CONTAINERIZED TREES ARE STRONGLY DISCOURAGED. TREES WITH LARGE CIRCLING ROOTS OR TOO DEEP ROOT SYSTEMS WILL BE REJECTED.
- ALL ROOT PACKAGES MUST BE FREE OF ANY WEEDS.
- TREES SHOULD NOT REQUIRE SIGNIFICANT PRUNING TO CORRECT HEALTH OR AESTHETIC APPEARANCE. TREES WITH SIGNIFICANT TOPSOILING, ALL NEW LANDSCAPE AREAS MUST BE PREPARED TO A DEPTH AND INCORPORATE TOPSOIL MATERIAL. SOIL MUST BE AMENDED, TILLED AND PREPARED TO A COMBINED DEPTH OF 12 INCHES. SOIL PREPARATION SHALL BE INSPECTED BY THE CITY PRIOR TO PLANTING. SEE SPECIFICATIONS FOR ADDITIONAL REQUIREMENTS.
- INSTALL 3" DEPTH SPECIFIED MULCH IN ALL LANDSCAPE AREAS.
- REFER TO CIVIL REMEDIATION DRAWINGS, SPECIFICATIONS, AND TREE PROTECTION DETAIL FOR ADDITIONAL REQUIREMENTS FOR TREE PROTECTION AND PRESERVATION.
- REFER TO CIVIL PLANS FOR SCHEDULE OF EXISTING TREES TO BE SAVED OR REMOVED.
- REFER TO CIVIL PLANS FOR NEW UTILITY WORK. CONTRACTOR RESPONSIBLE FOR PATCH AND REPAIR OF ALL EXISTING LANDSCAPE AREAS DISTURBED BY CONSTRUCTION WORK UNDER THIS CONTRACT.
- REFER TO PLANTING AND SEEDING SPECIFICATION FOR ADDITIONAL REQUIREMENTS, INCLUDING EXTENDED MAINTENANCE REQUIREMENTS.

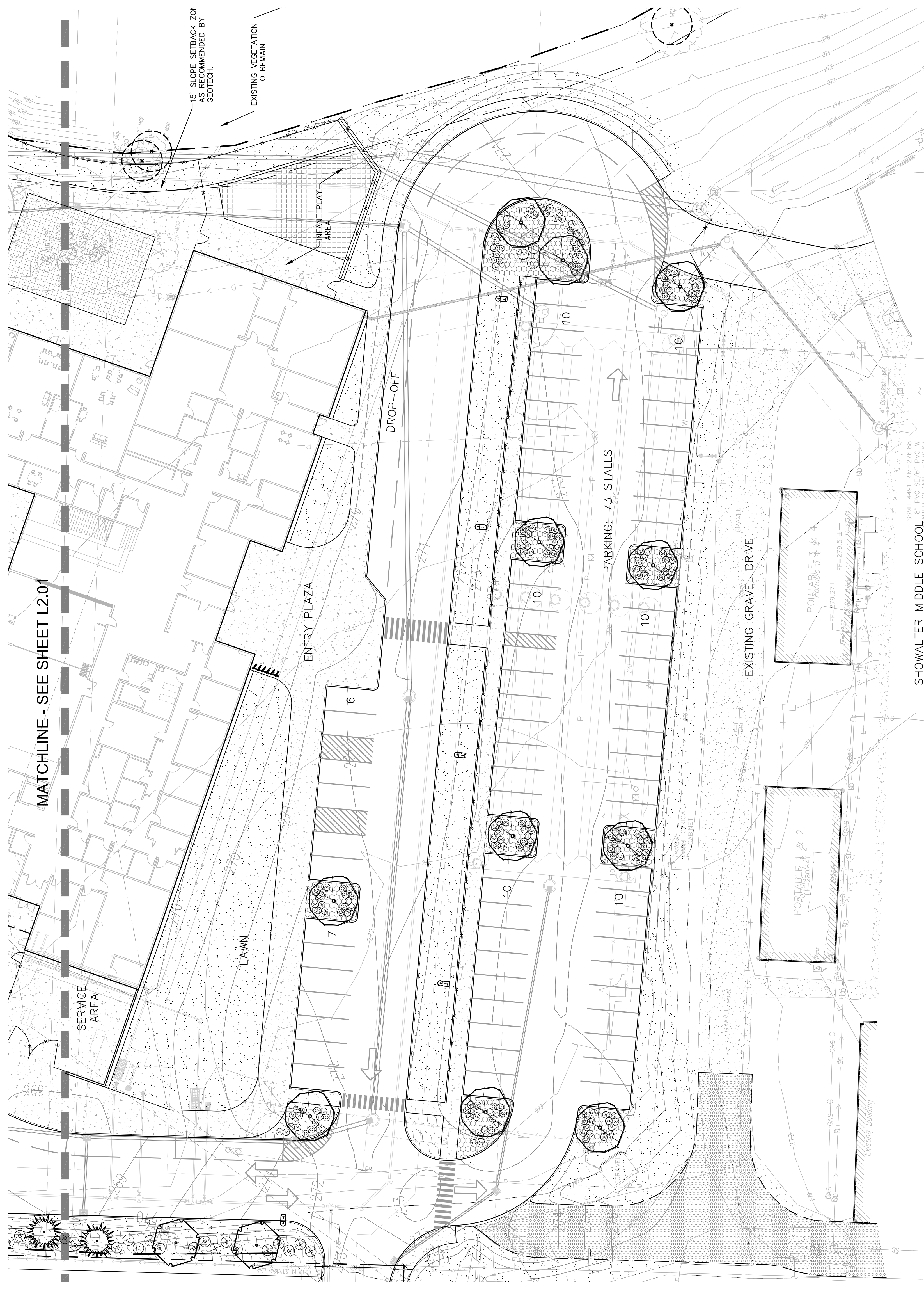
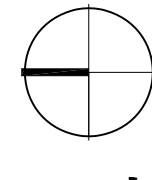
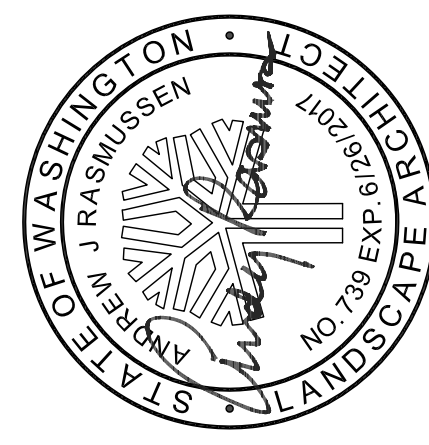
LANDSCAPE CALCULATIONS:

PARKING LOT LANDSCAPING:
 TMC 18,52,030 AND 18,52,020 E.2 REQUIREMENTS FOR PARKING LOTS: 15 SF PER STALL, ONE LANDSCAPE ISLAND FOR EVERY 10 PARKING SPACES, AND ONE LARGE TREE FOR EVERY 100 SF OF LANDSCAPE ISLAND
 REQUIRED FOR 73 STALLS: 1,095 SF
 PROVIDED: 3,270 SF
 REQUIRED TREES: 11
 PROVIDED TREES: 11



LANDSCAPE LEGEND (SYMBOLS SHOWN AT 1"=20'-0")

SYMBOL	SPECIES	QUANTITY	SIZE / CONDITION
SPECIMEN/SHADE TREES			
	ACER FREEMANII 'AUTUMN BLAZE' / AUTUMN BLAZE MAPLE	11	MIN. 2" CALIPER, 10-12' MIN. HT. WELL BRANCHED, B&B
	NYSSA SYLVATICA / BLACK TUPELO	5	MIN. 2" CALIPER, 10-12' MIN. HT. WELL BRANCHED, B&B
	ACER CIRCINATUM / VINE MAPLE	3	MULTI STEMMED, MIN. (3) X1" CALIPER, 8-10' MIN. HT., WELL BRANCHED, B&B
CONIFEROUS TREES			
	PSEUDOTSUGA MENZIESII / DOUGLAS FIR	10	MIN. 6-7" HT., FULL AND BUSHY TO BASE, B&B
	THUJA PLICATA 'HOGAN' / WESTERN RED CEDAR	10	MIN. 6-7" HT., FULL AND BUSHY TO BASE, B&B
SHRUBS AND GRASSES			
	CORNUS STOLONIFERA 'KELSEY' / KELSEY DOGWOOD	105	15-18" HT. & SPR., FULL & BUSHY B&B ON CONT.
	CORNUS STOLONIFERA 'ARCTIC FIRE' / ARCTIC FIRE RED TWIG DOGWOOD	38	15-18" HT. & SPR., FULL & BUSHY B&B OR CONT.
	MAHONIA AQUIFOLIUM 'COMPACTA' / COMPACT OREGON GRAPE	27	18-24" HT. & SPR., FULL & BUSHY B&B OR CONT.
	SPIRAEA BETULIFOLIA 'TOR' / BIRCHLEAF SPIREA	83	18-24" HT. & SPR., FULL & BUSHY B&B OR CONT.
	ARBUTUS UNEDO 'COMPACTA' / DWARF STRAWBERRY TREE	38	24-30" HT. & SPR., FULL & BUSHY B&B OR CONT.
	RIEBES SANGUINEUM / RED FLOWERING CURRANT	9	24-30" HT. & SPR., FULL & BUSHY B&B OR CONT.
GROUNDCOVER			
	FRAGARIA CHILOENSIS / BEACH STRAWBERRY	875	1 GAL. POTS @ 24" O.C. TRIANGULAR SPACING START FIRST ROW 12" FROM EDGE OF PLANTING AREA
NATIVE GROUNDCOVER MIX			
	40% GALLTHERIA SHALLOON / SALAL	760	1 GAL. POTS @ 24" O.C. TRIANGULAR SPACING START FIRST ROW 12" FROM EDGE OF PLANTING AREA
	40% MAHONIA REPENS / CREEPING MAHONIA	760	
	20% POLYSTICHUM MUNIUM / SWORD FERN	380	
LAWN			
	HYDRO-SEEDED LAWN	63,050 SF	SEE SPECIFICATIONS
EXISTING TREES			
	EXISTING TREE		EXISTING TREE TO REMAIN, SAVE AND PROTECT



SHOWALTER MIDDLE SCHOOL
 SSMH 4491 RIM=276.88
 5\"/>

LANDSCAPE LEGEND (SYMBOLS SHOWN AT 1\"/>

SYMBOL	SPECIES	QUANTITY	SIZE/CONDITION
SPECIMEN SHADE TREES			
	ACER FREEMANII 'AUTUMN BLAZE' / AUTUMN BLAZE MAPLE	11	MIN. 2\"/>
	NYSSA SYLVATICA / BLACK TUPELO	5	MIN. 2\"/>
	ACER CIRCINATUM / VINE MAPLE	3	MULTI STEMMED, MIN. (3) 1/2\"/>
CONIFEROUS TREES			
	PSEUDOTSUGA MENZIESI / DOUGLAS FIR	10	MIN. 6-7\"/>
	THUJA PLICATA 'HOGAN' / WESTERN RED CEDAR	10	MIN. 6-7\"/>
SHRUBS AND GRASSES			
	CORNUS STOLONIFERA 'KELSEY' / KELSEY DOGWOOD	105	15-18\"/>
	CORNUS STOLONIFERA 'ARCTIC FIRE' / ARCTIC FIRE RED TWIG DOGWOOD	36	15-18\"/>
	MAHONIA AQUIFOLIUM 'COMPACTA' / COMPACT OREGON GRAPE	27	18-24\"/>
	SPIRAEA BETULIFOLIA 'TOR' / BIRCHLEAF SPIREA	83	18-24\"/>
	ARBUTUS UNEDO 'COMPACTA' / DWARF STRAWBERRY TREE	38	24-30\"/>
	RIBES SANGUINEUM / RED FLOWERING CURRANT	9	24-30\"/>
GROUND COVER			
	FRAGARIA CHILOENSIS / BEACH STRAWBERRY	875	1 GAL. POTS @ 24\"/>
NATIVE GROUND COVER MIX			
	40% GAULThERIA SHALLOX / SALINA REBENS	760	1 GAL. POTS @ 24\"/>
	40% CREEPING MAHONIA	760	TRIANGULAR SPACING START FIRST ROW 2\"/>
	20% POLYSTICHUM MUNITUM / SWORD FERN	380	20% POLYSTICHUM MUNITUM / SWORD FERN
LAWN			
	HYDRO-SEEDED LAWN	63,050 SF	SEE SPECIFICATIONS
EXISTING TREES			
	EXISTING TREE		EXISTING TREE TO REMAIN, SAVE AND PROTECT