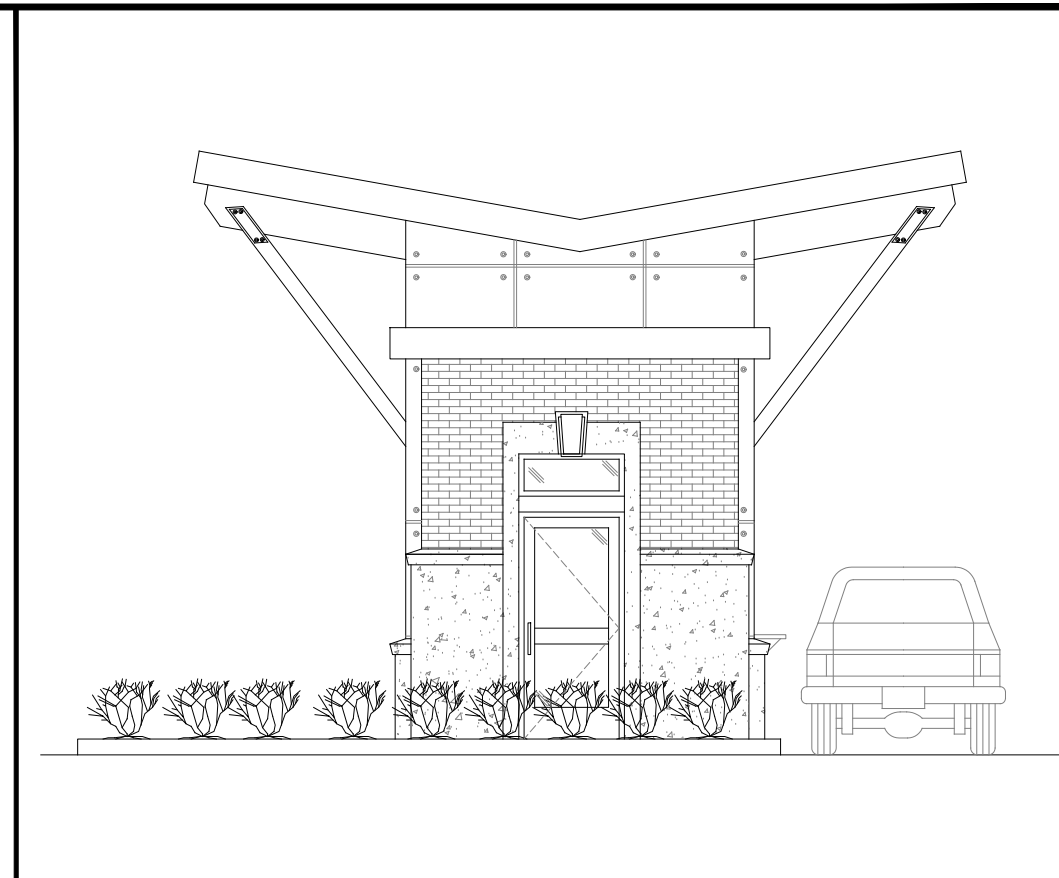
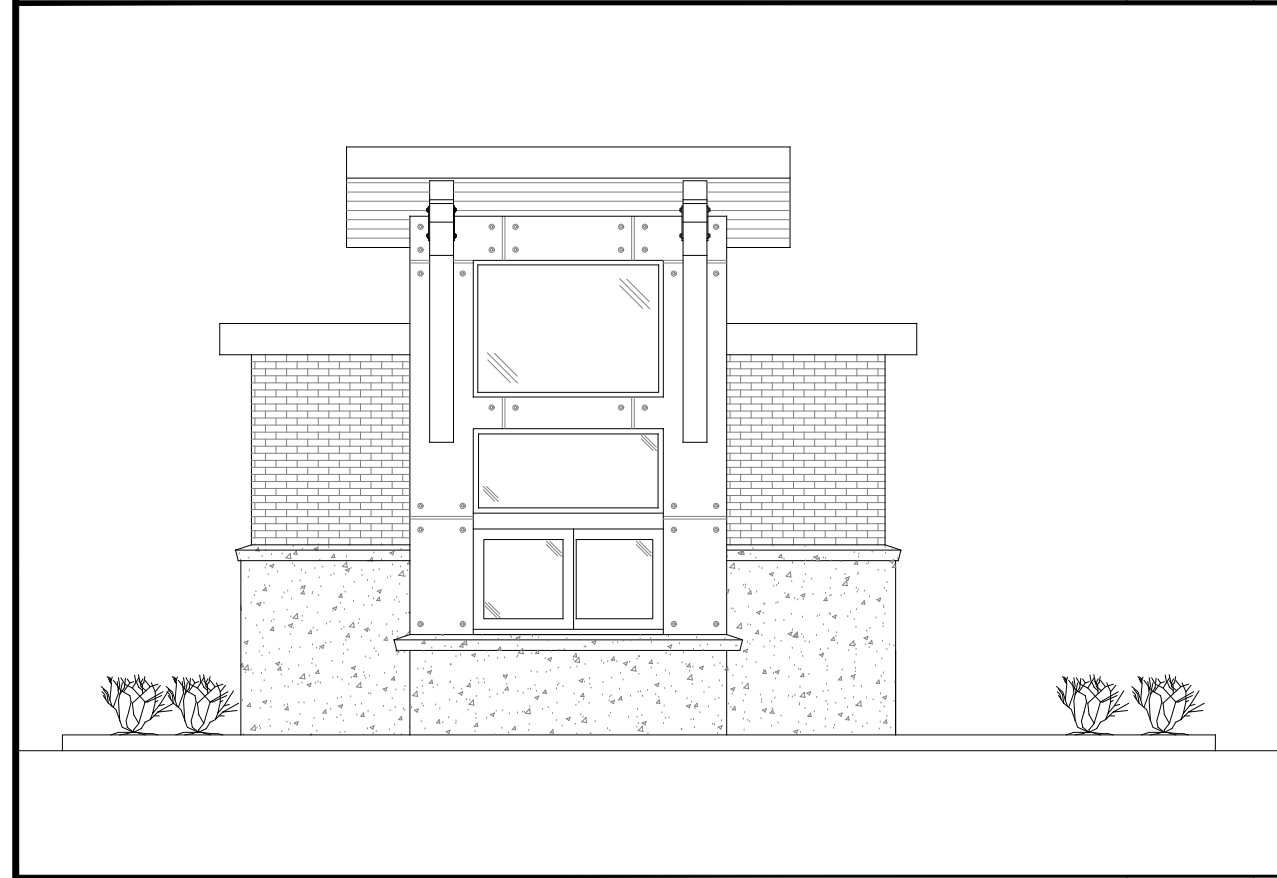


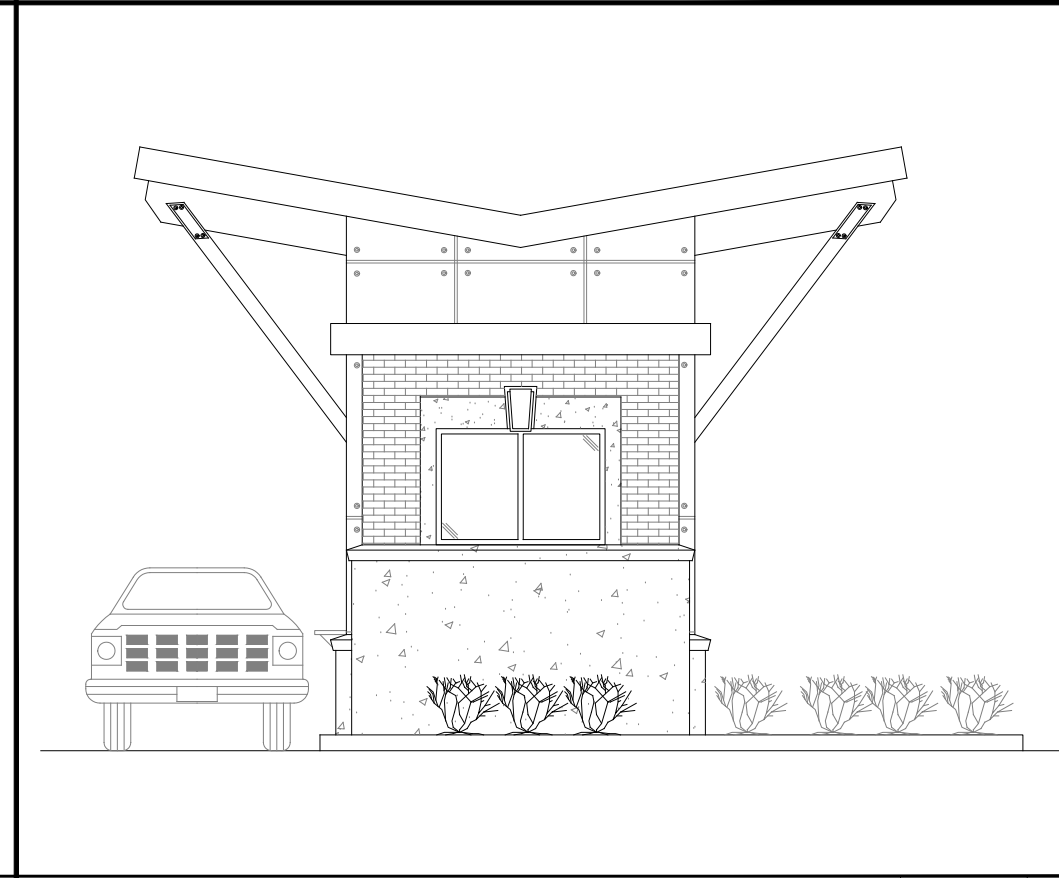
PROPOSED KIOSK ELEVATION – DRIVE THRU SIDE 1/2" = 1'-0" A



PROPOSED KIOSK SIDE ELEVATION 1/2" = 1'-0" B



PROPOSED KIOSK ELEVATION – WALK-UP SIDE 1/2" = 1'-0" C



PROPOSED KIOSK SIDE ELEVATION 1/2" = 1'-0" D

**PM**  
**DESIGN**  
Architectural  
Solutions Group

PETERSON'S 76  
STORE DESIGN & CONSTRUCTION  
13310 INTERURBAN AVE SOUTH  
TUKWILA, WA, 98168

PROJECT INFORMATION:  
PETERSON'S 76 STATION  
13310 INTERURBAN AVE S.  
TUKWILA, WA 98168  
PMDG PROJECT #: PTW16001.0

REVISIONS:

NO.	DESCRIPTION	DATE
1		
2		
3		
4		
5		
6		
7		
8		
9		
10		

DATE ISSUED: 9.22.16  
DESIGNED BY: TERIOR XXX  
DRAWN BY: TERIOR XXX  
CHECKED BY: VATIONS XXX

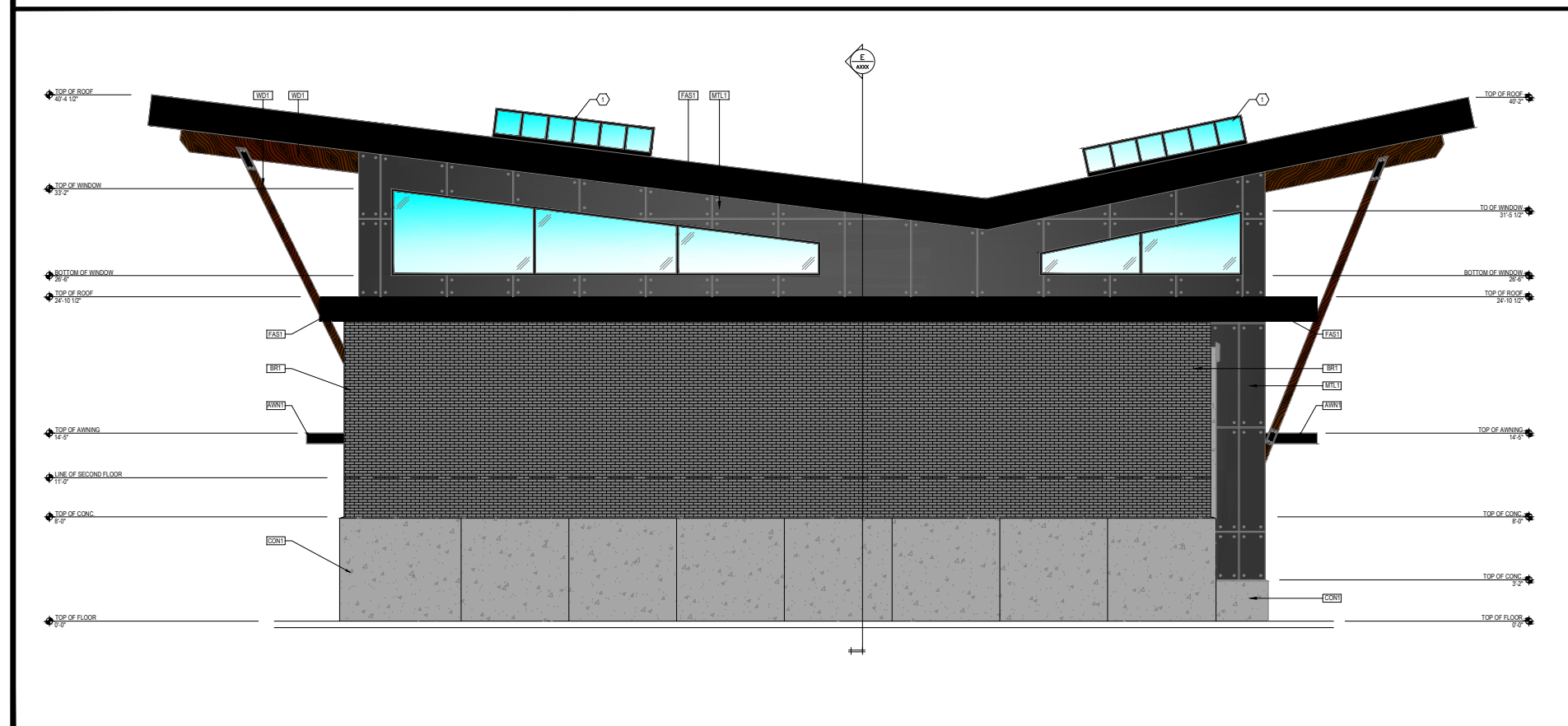
DRAWING NUMBER:  
**A202**





SOUTHWEST ELEVATION

1/4" = 1'-0" C



NORTHWEST ELEVATION

1/4" = 1'-0" A

PLAN KEYNOTES

- 1 SKYLIGHTS
- 2 115 SF SIGN
- 3 MECH EQUIPMENT
- 4
- 5

EXTERIOR FINISH LEGEND

EXTERIOR:

- CONC: CONCRETE FINISH  
MFR: N/A  
COLOR: NATURAL
- AWN1: AWNING FINISH  
MFR: PIKE AWNING COMPANY  
COLOR: BLACK
- BRT: BRICK VENEER  
MFR: MUTUAL MATERIALS  
MODEL: SLIMBRICK - REDWOOD GRAY
- FAST: FASCIA FINISH  
MFR: PIKE AWNING COMPANY  
COLOR: BLACK
- MFL1: METAL FINISH  
MFR: CORTEN  
MODEL: A854-RUSTED
- WBT1: WOOD FINISH  
MFR: N/A  
COLOR: STAINED TO MATCH WBT2
- WBT2: WOOD FINISH  
MFR: KAYU INTERNATIONAL  
MODEL: EXT. DECKING - GOLDEN
- WBT3: WOOD FINISH  
MFR: KAYU INTERNATIONAL  
MODEL: EXT. MAHOGANY SIDING

NOTE: SEE DOOR AND WINDOW SCHEDULE SHEET FOR DOOR AND WINDOW FRAME FINISH REFERENCES



PETERSON'S 76  
STORE DESIGN & CONSTRUCTION  
13310 INTERURBAN AVE SOUTH  
TUKWILA, WA, 98168

PROJECT INFORMATION:  
PETERSON'S 76 STATION  
13310 INTERURBAN AVE S.  
TUKWILA, WA 98168  
PADC PROJECT #:

REVISIONS:

NO.	DESCRIPTION	DATE
1		
2		
3		
4		
5		

DATE ISSUED: 9.22.16  
DESIGNED BY: XXX  
DRAWN BY: XXX  
CHECKED BY: XXX

EXTERIOR ELEVATIONS

DRAWING NUMBER:  
A200





















