



TO: Community Development and Neighborhoods Committee

FROM: Rick Still, Director Parks & Recreation

BY: Tracy Gallaway, P&R Manager

CC: Mayor Ekberg

DATE: April 18, 2018

SUBJECT: Tukwila Municipal Arts Plan Adoption

ISSUE

Presentation of the Tukwila Municipal Arts Plan for adoption by resolution.

BACKGROUND

In 2014, the Tukwila Municipal Code was updated to include section 2.30.050 Creation of Municipal Arts Fund for Capital Arts Projects. Commonly referred to as the 1% Art Fund, the intent of the fund is to integrate artwork into capital projects, however where it is not possible to incorporate art into the project, a calculated contribution is made to the Municipal Arts Fund instead.

On September 12, 2016, staff reported to Community Affairs and Parks Committee the intent to develop a Public Arts Plan and in 2017, Carolyn Law and Lesley Bain (C/Law Studio and Framework Cultural Placemaking) were retained as consultants for the project. The consultants' scope of work was three-fold. The first area of emphasis was to engage with the community, Arts Commission, City staff and elected officials to develop a conceptual framework and strategic opportunities for art in Tukwila.

The second area of emphasis was to develop a Municipal Arts Plan (MAP). The MAP focused on aligning the community's artistic priorities for art and culture with the existing vision the City and community had developed through the Strategic Plan, the Comprehensive Plan and the Parks & Recreation Open Space Plan. The MAP also identified potential locations and approaches for art within the city.

Additionally, the consultants were tasked to assist in the development of an initial implementation strategy that included a draft list of potential projects, and cultural events that could be tied to the focus areas identified in the Municipal Arts Plan.

DISCUSSION

Through the MAP process, and with input from community participants, seven goals were developed:

1. Balance of projects and locations;
2. Effective use of resources and partnerships;
3. Projects that will use art to strengthen connections in the community;
4. Opportunities for all in the community to make and display art in Tukwila;
5. Engage artists, both local and beyond, to enrich the cultural dialogue and expression within Tukwila;

6. Increased sense of identity for Tukwila that is meaningful to the community and visible to the broader public;
7. Integrate arts and culture into the built environment wherever possible.

The MAP identifies four theme areas as important to Tukwila:

- ✓ River
- ✓ Tukwila International Boulevard
- ✓ Southcenter District
- ✓ Tukwila Village

To implement the plan, we are recommending the use of Artists-In-Residence (AiRs) projects at two of the identified community locations, the River and Tukwila International Boulevard. Setting up two simultaneous AiRs residencies will result in a variety of potential activity and be centered on creating experiences, enabling collaborations, and building relationships through direct involvement of Tukwila's diverse residents and city staff. AiRs allow for the City to assess what kind of cultural activities the community connects with and support and guide art interventions including permanent artworks.

Now complete, the MAP provides direction for staff on how to support artwork through the City that enhances quality of life while influencing the identity and image of the City. The MAP is being presented to the Community Development and Neighborhoods Committee for consideration of adoption by resolution.

FINANCIAL IMPACT

Funding for projects comes from eligible capital funds transferred to the Municipal Arts Fund. There are no additional general fund contributions or impacts.

RECOMMENDATION

The Committee is being asked to consider adopting the Tukwila Municipal Arts Plan by resolution and forwarding to the subsequent May 14, 2018 Committee of the Whole and May 21, 2018 Regular City Council Meetings.

ATTACHMENTS

- DRAFT Resolution
- Tukwila Municipal Arts Plan and Implementation Plan for Public Art 2018-2019
- PPT Presentation

DRAFT

A RESOLUTION OF THE CITY COUNCIL OF THE CITY OF TUKWILA, WASHINGTON, ADOPTING THE TUKWILA MUNICIPAL ARTS PLAN FOR THE CITY OF TUKWILA.

WHEREAS, the City of Tukwila, through the Tukwila Municipal Arts Plan, has identified the importance and value of engaging with the community to explore ways of using art to beautify and enrich the community; and

WHEREAS, the City of Tukwila Parks & Recreation Department desires to engage the community to connect the community’s priorities for art and culture to the well-considered vision the City and community have developed through adoption of the Comprehensive Plan, Strategic Plan and the Parks, Recreation and Open Space Plan, and to look for ways that arts and culture can contribute to Tukwila’s future and directly benefit those who work, live, and play in the City of Tukwila; and

WHEREAS, the City of Tukwila, through Ordinance No. 2527, has established the Municipal Arts Fund, designating 1% of City Capital Improvement Projects for public art; and

WHEREAS, the Tukwila Municipal Arts Plan (the “Plan”) was created after solicitation and receipt of public input via multiple outreach methods; and

WHEREAS, City staff and the Arts Commission have completed review and modification of the Tukwila Municipal Arts Plan, and have forwarded the Plan to the City Council for review and adoption;

NOW, THEREFORE, THE CITY COUNCIL OF THE CITY OF TUKWILA, WASHINGTON, HEREBY RESOLVES AS FOLLOWS:

The Tukwila Municipal Arts Plan, attached hereto as Exhibit A, is hereby adopted.

PASSED BY THE CITY COUNCIL OF THE CITY OF TUKWILA, WASHINGTON, at a Regular Meeting thereof this _____ day of _____, 2018.

ATTEST/AUTHENTICATED:

Christy O’Flaherty, MMC, City Clerk

Verna Seal, Council President

APPROVED AS TO FORM BY:

Filed with the City Clerk: _____
Passed by the City Council: _____
Resolution Number: _____

Rachel B. Turpin, City Attorney

Exhibit A – Tukwila Municipal Arts Plan



TUKWILA ARTS

Tukwila Municipal Arts Plan



Carolyn Law
& Framework
Cultural
Placemaking



TABLE OF CONTENTS

Introduction 3

Acknowledgements 4

Framing the Plan’s Roadmap 6

 What We Heard..... 7

THE ROADMAP

Vision + Goals 8

 Vision..... 8

 Intent 9

 Goals..... 10

What + Where 11

 Types of Projects 11

 Priority Locations..... 12

Focus Areas & Projects 13

 The River 13

 Tukwila International Boulevard 18

 Southcenter District..... 22

 Tukwila Village..... 25

Community-Wide Projects 28

 Events 28

 Artist-In-Residence Projects 29

Matrix..... 30

THE TOOLKIT

Nuts + Bolts 32

 Developing the Arts Commission 32

 Staffing and Consultants 32

 Bi-Annual Planning 33

 Initial Project Framework..... 33

 Assessment Process..... 34

 Partnerships 34

 Beyond the % for Art Ordinance 35

 Artist Selection Process 36

2-Year Checklist 38

Resources 40

INTRODUCTION

Tukwila is an energetic, remarkable and varied community comprised of those who live, work and visit. It includes long-time residents and those that have recently arrived from around the world. Its distinct neighborhoods, school system, varied businesses types, employment centers, and regional shopping and entertainment are home to Tukwila's residents and attract people from around the metropolitan area. Tukwila's has an enviable system of parks, with the beautiful Green River and wooded hilly terrain. Tukwila is home to major institutions like the Museum of Flight and Starfire, and is a crossroads of major freeway infrastructure. The people of Tukwila are rightly proud of their city and aspire to having their own community, and the broader public, recognize and partake of its many assets.

The art master plan challenges Tukwila to engage in an intentional, unfolding process that will create / explore / experiment with how arts and cultural activity best engage the broadest part of the community with the social fabric and physical and emotional sense of place. The goal of the process is to establish a distinctive, responsive and flexible mosaic of contemporary cultural expressions and activities. In doing so, a thoughtful network of bridges will be built between diverse cultural expressions to ideas, art forms to people and meaningful locations thereby inevitably enriching the City.

The City of Tukwila has spent a good deal of effort engaging with its citizens on the vision for their community. The Comprehensive Plan, Strategic Plan, the Parks & Open Space Plan, branding efforts and the Community Conversations solicited broad input on the values and priorities of the community. This art plan builds on those key documents, looking for ways that arts and culture can contribute to the ambitions for Tukwila's thoughtfully considered future. This art master plan links priorities for art and culture to the well-considered vision that the community has set out for itself, aspiring to the goal in the City's Strategic Plan: *explore ways of using art to beautify and enrich the community.*

*explore ways of using art to beautify
and enrich the community
—Tukwila Strategic Plan*

ACKNOWLEDGEMENTS

We would like to thank the many who contributed to a strong grounding of the “who, what, where” of Tukwila that was essential to understand before embarking on crafting a plan that would be specific to this amazing City. City staff and Council, the Tukwila Arts Commission and members of the community all took time to share their stories and views with us. The various planning documents the City has prepared were also invaluable to understanding the larger framework of future civic goals.

CITY OF TUKWILA

Allan Ekberg, Mayor
Rick Still, Parks & Recreation Director
Tracy Gallaway, Project Manager

CITY COUNCIL

Verna Seal, President
Dennis Robertson
Kathy Hougardy
De'Sean Quinn
Kate Kruller
Thomas McLeod
Zak Idan

ARTS COMMISSION

Cynthia Chesak
Sheila Coppola
Helen Enguerra
Trisha Gilmore
Daniel Humkey
Brian Kennedy
Alex Villella
Yuriko Rollins,
Student Representative

CITY STAFF

David Cline, City Administrator
Peggy McCarthy, Finance Director
Laurel Humphrey, Council Analyst
Stephanie Gardner, Parks & Recreation
Derek Speck, Economic Development
Brandon Miles, Economic Development
Jay Wittwer, Fire Chief
Mike Perfetti, Public Works
Tanya Taylor, Public Works

COMMUNITY

Sean Albert, Parks Commission
Abbie Anderson, KCLS
Action Tukwila
Hamdi Abdulle, Somali Youth & Family Club
Mette Hanson, Artist, Duwamish Hill

CONSULTANTS

Carolyn Law, Artist
Lesley Bain, FAIA, Framework Cultural Placemaking

***In honor of
Steven Mullet,
1943-2017
Former Mayor
and Art
Commissioner***

FRAMING THE PLAN'S ROADMAP

This art master plan presents a road map that allows the City—in concert with the community—to explore how arts and cultural activities best achieve the City’s newly established vision, mission, and goals for this important component of civic life. The plan creates a matrix of potential art and cultural integration possibilities tied to key locations and/or whole features in Tukwila. The plan’s goal is to intentionally contribute to Tukwila’s vibrancy and character while supporting and creating new interconnections between community members, workers and visitors to each other and to the place that the people of Tukwila call home.

We interviewed and spoke with staff from Administration, Parks, Planning, Public Works and Fire Department, elected members of the City Council, Arts Commission members and a Park Commissioner, a King County Librarian, Action Tukwila, Somali Youth and Family Club director, and the artist for Duwamish Hill Preserve.

Everyone was insightful about the direction the city and their civic involvement should be heading to create the most livable community. There was a well-articulated sense of vision, understanding, and unified direction. Many considerations were shared about how best to use arts & culture as a strong ingredient for community building and place-making. There was a desire to foster a greater degree and complexity of cross-over and understanding between various groups invested in working on behalf of the City.

It was understood that engaging artists to explore contemporary cultural artistic expression and insights in ways that would bring the community together and

forgo a unique sense of social/cultural equity for Tukwila could do this, but should be described in a way that was specifically “Tukwilan”.

The desire to take action and springboard off the 1% ordinance is strong. It is also clear that there are wonderful potential partnerships that the City could avail itself of. Yet the City must be in a leadership role and guide developing the overarching structure for the role arts and culture will play on behalf of the community and help strengthen all aspects of a livable, sustainable place to live and work.

In particular, when talking about physical Tukwila, we heard that Tukwila International Boulevard with the new library, gathering space and housing is a focus as it has the potential to gather people together by providing a central spine that demonstrates a concrete sense of caring for a place. The importance of the river was also much mentioned, with acknowledgement that it is not well used or known. “Re-seeing” infrastructure was talked about by purposefully using “tactical urbanism”—sidewalk treatments and interesting vertical gestures coupled with other projects to claim the streets as true places rather than merely functional. There was some mention of neighborhoods and amplifying their distinctiveness. And the building of housing and mixed use buildings in the Southcenter District will ultimately change the way that area of the city is inhabited, used and perceived.

Addressing this mix of physical spaces using arts and culture will support a healthy, vital community for the current and future demographic mix.

WHAT WE HEARD

- Policy should reflect that creative art and cultural expressions are core values of the City.
- The City should support and look for ways to increase the involvement of community members in creative endeavors.
- Artists should be included on design and planning teams, influencing project designs with artistic approaches and art concepts.
- The City should recognize the important part that beautiful and interesting civic and public spaces have to play in the health and vitality of Tukwila's community.
- Artists should be involved in a variety of artist-in-residence situations that contribute to bringing diverse aspects of the community together and expanding the thinking within City departments about infusing arts and culture wherever possible in their work.
- The City should use art and culture to foster a collaborative spirit between departments and staff members.
- Cultural expressions and activities should be visible throughout the City at all scales, including in the rights-of-way, sidewalks, parks, the river trail, and public places.
- City-sponsored performances and festivals should bring locals and non-locals together, seeding ideas for more types of cultural activity and sharing that could come directly from community members and groups.

In Summary:

There is an expressed desire to create an overall vital, beautiful integration of physical and cultural/ social environments that ultimately imbues Tukwila with a distinctive appreciation of place and sense of belonging.

The City should adopt a policy of engaging the arts and the capacity of artists to devise temporary, permanent and interactive art projects and processes as a key element in creative place-making and community-building.

***Integrate art throughout the city. —
Tukwila Parks & Open Space Plan***

THE ROADMAP

VISION + GOALS



VISION

Arts and culture are active and visible in many ways in Tukwila, bringing pleasure and vitality to everyday life. Tukwila's civic identity and pride are strengthened through celebrating arts and culture, engaging and reflecting the multifaceted nature of the community, generating bonds among people and adding meaning to the places where they live and work.

INTENT

Decisions regarding use of public funds for art and culture will provide a balance of project types and locations, based on the intent and vision of *Tukwila Arts*.

THE SPECTRUM OF ART AND CULTURE IN TUKWILA WILL INCLUDE:

- Art at purposely selected civic buildings
- Art and culture that highlights the particular places that make Tukwila unique
- Community engagement projects that emphasize the creative process
- Community-wide culturally-based gatherings, events and performances



GOALS

- Provide a balance of project types and locations, based on the intent and vision of *Tukwila Arts*.
- Use resources effectively, leveraging partnerships and additional sources of funding.
- Target projects that will use the arts to strengthen connections to the special places of Tukwila, and among community members.
- Increase a sense of identity for Tukwila that is both visible to the broader public and meaningful to the people who live and work in Tukwila.
- Encourage participation for all in opportunities to make and display creative art in Tukwila.
- Engage artists both within the city and beyond to enrich the cultural dialogue and expression available within Tukwila.
- Encourage City departments to seek opportunities that integrate arts and culture into all aspects of planning and implementation of projects in the built environment.

WHAT + WHERE

TYPES OF PROJECTS

This plan encourages City support for a variety of types of projects. These will include permanent physical art projects, temporary projects, civic residencies, community engagement and events focused on culture, with artist involvement.

The spectrum of art and culture in Tukwila will include:

- Art at purposely selected civic buildings
- Art and culture that highlights the particular places that make Tukwila unique
- Community engagement projects that emphasize the creative process
- Community-wide culturally-based gatherings, events and performances



Clark Weigman, Soundings



City of Tukwila, Backyard Wildlife Festival



Community process for Multiplicity, John Fleming, Artist

PRIORITY LOCATIONS

Projects should be located to have the most positive impact for the community and to meet the goals of *Tukwila Arts*. Art is often incorporated into public buildings and spaces, including civic buildings and parks. The art at the library and at the light rail station are excellent examples of permanent public art experienced by a wide segment of community members. Duwamish Hill is an exemplar of incorporating art into parks. Public art is also well located as part of visible civic infrastructure, such as bridges or transit hubs.

Three key districts have been identified as well suited to public art in Tukwila. These include the river, Tukwila International Boulevard, and the Southcenter District. Incorporating art into these special areas would be in keeping with the City's Comprehensive Plan and with multiple outreach efforts.

Beyond a focus on districts, projects that are intended to be community-wide, and designed to draw people from throughout Tukwila should be implemented as part of each 2-year plan. These types of projects are outlined within the plan in the Focus Areas & Projects section that follows.

Provide prominent public art and interpretive markers at highly visible locations, explaining the history of the Interurban Trolley, the Green/Duwamish River, Duwamish Hill Preserve, and other important buildings, sites, events or persons.
—Comprehensive Plan

FOCUS AREAS & PROJECTS

THE RIVER

The Green/Duwamish River is a defining feature, running through the entire length of Tukwila. The river is not only a highly visible feature of Tukwila’s natural systems, it has been central to the city’s history and economy. Many of the City’s green open spaces lie along the river, connected by the Green River Trail. Already, some of Tukwila’s finest art is along the river, such as the work at Duwamish Hill Preserve, and signature community celebrations take place along the river the Community Center and Fort Dent Park. Art, in the form of permanent works and celebratory events, can strengthen the role of the river in Tukwila’s identity and community life.

Despite the fact that the Green/Duwamish River is the city’s spine, it is hard to reach from many parts of Tukwila. Major changes in topography and heavily trafficked arterials separate many neighborhoods from the river physically and perceptually. Art and cultural events can help reinforce the river as a destination, and focus on connections to the river.



***Increase public access to the river—
Tukwila Comprehensive Plan Goal***

Some of Tukwila's finest art is along the river. The top image is Duwamish Gardens, which is both a salmon habitat restoration site and public park, with interpretive signs and art that help tell the story of the Native Americans who made their home on the river.

Community celebrations take place along the river, such as the 4th of July at Fort Dent Park.

Bottom left is an image of the Chaotic Cartographers (Vanessa de Wolf, Cristen Call, Lydia Swartz) at the Tukwila Revealed event in 2015, a walk along the Duwamish interspersed with performance, storytelling and artmaking, as part of the Duwamish Revealed project funded in part with a national grant by Art Place.

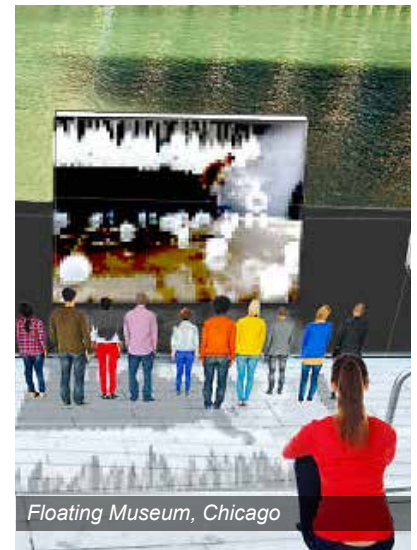
The bottom right image shows Seasonal Rounds, by artist Mette Hanson, at Duwamish Hill Preserve. Seasonal Rounds is a focal point and gathering place in the cultural gardens, which feature native plants and habitats traditionally used by the Puget Sound Salish people.



THE RIVER

WHAT CAN ART DO?

- Art can help people **connect to the river**: Newark staged a parade for neighborhoods to walk to the river together.
- Art can **mark access** points to the river with large scale, joyful installations. This location would be a great place to make the river visible!
- Art can **mark sequence** along the river, like this milestone—one of nine by Jim Collins along the river in Chattanooga Tennessee. The art could also define the Tukwila segment of the Green River Trail
- Increase the attractiveness of the river as a **destination** as a beautiful and humane place
- Build on the successful **events** already taking place near the river



THE RIVER

WHAT'S POSSIBLE

Ideas to jump-start thinking:

- Art on adjacent buildings

- Mural program

- Creative signage

- Events along the river

- Floating art

- Performances

- Skate, Stroll & Roll

- Treasure hunt

- Parades to the river

- Parades along the river

- Linear sculpture park

- Interactive art



GOALS FOR ART & CULTURE AT THE RIVER

- Focus the arts on existing public assets along the river, including Duwamish Hill Preserve/Cecil Moses Memorial Parks/North Wind's Weir, Tukwila Community Center, Fort Dent Park and Bicentennial Park. In these locations, consider celebratory events; social practice projects; and temporary or seasonal installations.



Runoff, Stephanie Beck

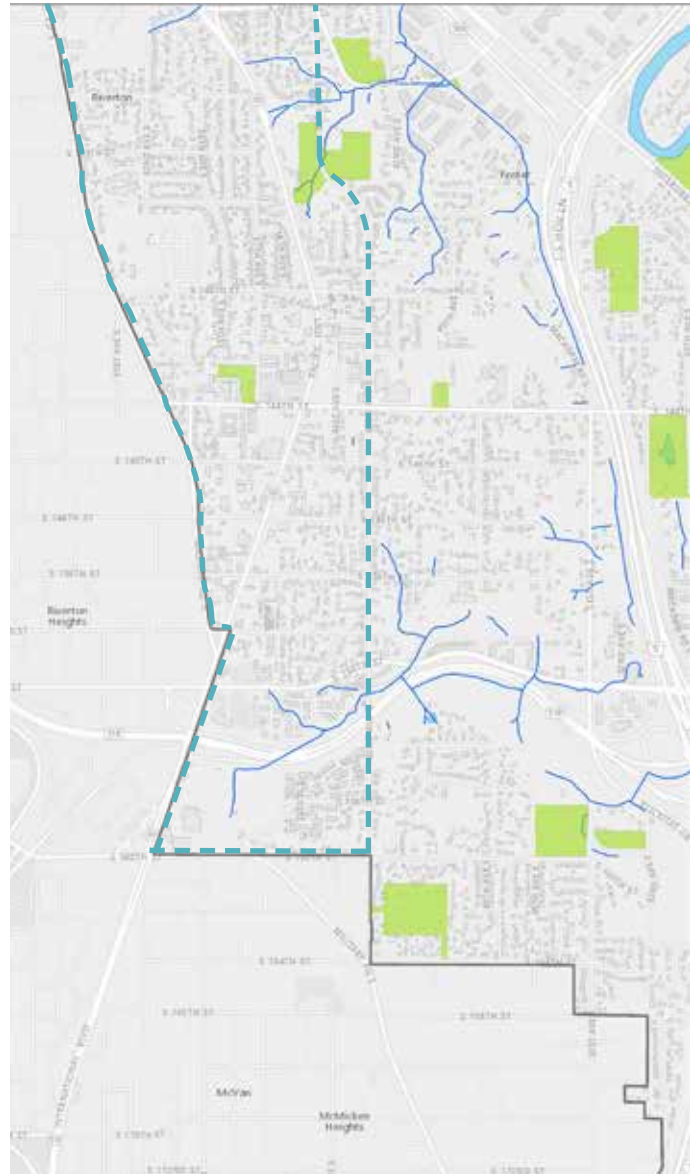
- Look for opportunities to better connect the river to Tukwila's neighborhoods, highlighting access points and routes to the river including Duwamish Gardens, Tukwila Community Center, Codiga Park, BECU Headquarters, Foster Point (57th Ave Mini Park and lookout point), Foster Golf Links, Fort Dent/Starfire Sports Complex, and Bicentennial Park.



TUKWILA INTERNATIONAL BOULEVARD

with Tukwila Village

The ambition for Tukwila International Boulevard is as a multicultural district, with small businesses and residences serving diverse communities around the region. Art and culture can contribute to the vision for Tukwila International Boulevard, reflecting and celebrating the rich mix of backgrounds and making the character of the neighborhood visible.



The vision for the Tukwila International Boulevard District is an area that is a complete neighborhood with a thriving, multicultural residential and business community with vibrant places to live, work, shop, and play for everyone. The District is a safe and walkable destination with an authentic, main street character that is connected to other destinations.

—Comprehensive Plan, 8-25

Invest public funds in the infrastructure and public amenities necessary to catalyze private investment, stimulate the location of businesses and housing, and create an attractive neighborhood.

—Comprehensive Plan, 8-26

TUKWILA INTERNATIONAL BOULEVARD

WHAT CAN ART DO?

- Art can **give identity** to International Boulevard as a place with a rich culture and home to ethnic businesses
- Art can **jump start** a transformation of International Boulevard, as new businesses and new urban form take shape
- Art **bring color and beauty** to International Boulevard.



The Tukwila Arts Commission shall ensure that Tukwila's characteristics, such as its history and cultural diversity, are considered in public art projects—Comprehensive Plan 1.3.6



WHAT'S POSSIBLE?

Ideas to jump-start thinking:

- Art on banners
- Art on ground plane—streets and sidewalks
- Lighting
- Gathering Places
- Sculpture in the right-of-way
- Art-based events, festivals and parades
- Distinctive murals



Banners, created at Camp Winnarainbow



Silicon Forest, Brian Borello



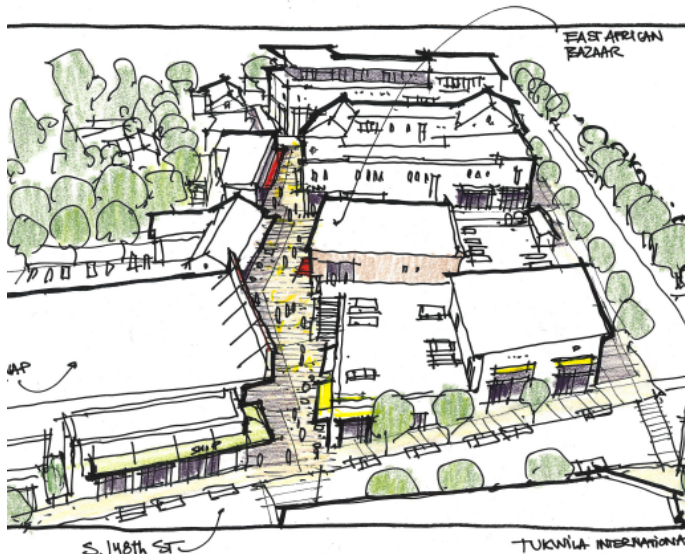
Come Sit at My Table, Art/Sports/Potluck, Action Tukwila



Roadsmith

GOALS FOR ART & CULTURE AT TUKWILA INTERNATIONAL BOULEVARD

- Add art that celebrates the international character of the district and increases its visibility
- Support social practice projects such as community mapping, walking tours, story gathering, etc



Vision Sketch of Tukwila International Boulevard, CNU Charrete

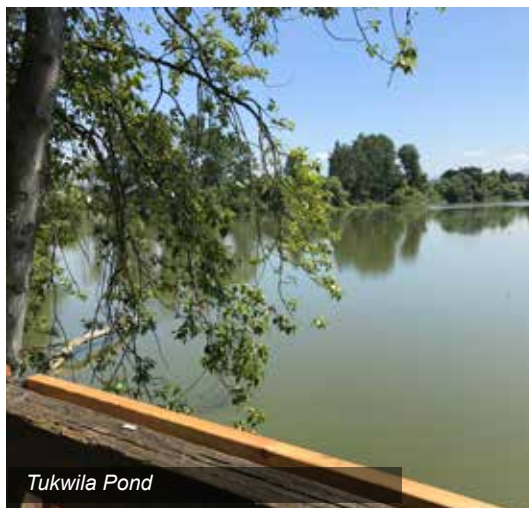
SOUTHCENTER DISTRICT

The Southcenter District is the city's primary commercial hub, a concentrated center of employment, and a regional destination for shopping and entertainment. The area is also moving from a model of automobile dominance to a paradigm of mixed use, transit access and walkability.

The vision for the Southcenter District is clearly spelled out in the Subarea Plan and the Southcenter Design Manual. The spectrum of arts and cultural opportunities can support the vision, and serve in the near term as a way to help people orient themselves and imagine the positive aspects of its future. These goals are intended as a guide both for prioritizing expenditure of public art funds, and for private investments in art and culture. By coordinating private efforts, the "sum of the parts" will have a greater impact in the district.



Hotel Interurban



Tukwila Pond



Southcenter Pedestrian Bridge

WHAT CAN ART DO?

- Art can help Tukwila kick-starting their plans and **help people imagine** what the visions might feel like.
- Art can **mark** important places and help people find their way to destinations.
- Art can **create and define space**, making places that attract people and activities.



WHAT'S POSSIBLE?

Ideas to jump-start thinking:

- Large scale or iconic art
- Art that helps wayfinding
- Small scale art that humanizes space
- Events of all sizes
- Artistic treatment of the public right-of-way
- Environmentally-related art at the pond
- Artistic connections to the river



GOALS FOR ART & CULTURE IN THE SOUTHCENTER DISTRICT

- Use art to help generate an understandable hierarchy of spaces in the developing neighborhood, with gathering places of community significance and intuitive routes to transit
- Enhance Southcenter District area streetscape/sidewalks in advance of new development
- Encourage parklets & pop-ups used for events and arts activity spaces
- Highlight neighborhood parks leading into the river trail system

“Unearth” Tukwila Pond and the portion of the Green River that passes through Southcenter, restoring their natural health and beauty, and featuring them prominently as amenities that enhance the identity and drawing power of Southcenter.— Southcenter Subarea Plan p5



Diagram of Southcenter District vision, showing connections to the Sounder Station, the Westfield Mall and Tukwila Pond. —Southcenter Subarea Plan p.12

TUKWILA VILLAGE

with Tukwila International Boulevard

The City of Tukwila has led the transformation of six acres near Tukwila International Boulevard and South 144th Street into a heart for the community. Public art is a highlight of the recently opened library, community meeting space, café and plaza. Future development should continue to value the very successful community-based process for public art as Tukwila Village is built out and used, with events and activities drawing on the cultural richness of Tukwila.



Tukwila Village – the intent (is) that it will catalyze and demonstrate the intensity and quality of development envisioned for the area. Tukwila Comprehensive Plan 8-8

Activate public and private community gathering spaces with temporary events including food, art, music, pop-ups and activities that leverage nearby assets, such as schools and cultural facilities, and reflect the international, multicultural character of the TIB area. Tukwila Comprehensive Plan 8-23



Twin Sculptures at Tukwila Village, Andersen Studios

WHAT CAN ART DO?

- Arts and culture can **enliven and engage** the community at many levels, sharing culture and celebrations with music, dance, art, traditions, and food.
- Arts and culture at Tukwila Village can **be a model of the value of community engagement** for other developments



WHAT'S POSSIBLE?

Ideas to jump-start thinking:

- Community-based art
- Artist-led celebrations, events and performances
- Concerts
- Artists in residencies
- Activation of Tukwila International Boulevard



GOALS FOR ART & CULTURE IN TUKWILA VILLAGE

- Events that are annual or developed using a themed approach, using a range of artists to conceive of engaging community events

- Temporary participatory art projects that temporarily transform the gathering place for a set amount of time



COMMUNITY-WIDE PROJECTS

EVENTS

Art and cultural events draw the people of Tukwila together to celebrate, create shared special occasions and make shared memories. Art-based events can help define community culture: **we are the city that has fun, annual activities on the river.**

Tukwila could have more of these shared, joyful experiences in park space, along the river, or along Tukwila International Boulevard. Such events could be City led, or community-based with City support.

There is already a very successful tradition of events in Tukwila. The City sponsors annual events including the Family 4th at the Fort and the Backyard Wildlife Festival. Community organizations and partnerships also sponsor events, such as Action Tukwila and religious organizations. The schools also have art events and cultural celebrations.

However, there is still room for a wide range of gatherings and events that are specifically generated by artist's concepts. Instead of following models from elsewhere, Tukwila could adapt models to serve its community needs. Instead of an art walk, there could be a monthly showcase of dance, storytelling, or other creative activities of interest to the community.

Events could:

- Engage with infrastructure in ways that create neighborhood identity or highlight a City amenity
- Incorporate temporary art works
- Highlight connections, such as routes to the river
- Feature cultural traditions, visual and performing arts
- Create annual traditions

ARTIST-IN-RESIDENCE PROJECTS

Involving artists in the community and with City agencies can be a productive way to foster arts and creativity in broad and sometimes unexpected ways. There are interesting models of artists-in-residence energizing public agencies; in Tukwila this could be an artist embedded in the Parks Department to brainstorm and gather ideas for the river, parks, Community Center, etc. with City staff. Other programs have artists-in-residence serve as role models and mentors to local artists and artisans.

Examples of successful residencies include:

King County Trail System

An artist team developed temporary art and a range of engagement activities to showcase the trail system that was underused by county residents. The residency allowed the public art program to see what types of projects would be most successful in adding to the use and meaning of this wonderful asset.

Green Infrastructure and Waterways Artist-in-Residence Program, Seattle Public Utilities

Working with SPU staff in a 6-month residency, artist Vaughn Bell developed an art master plan to guide public art commissions that would be integrated into drainage and wastewater projects, showing people how we relate to our environment.

Artist-in Residence-Program Seattle Department of Transportation

A two-part Art Plan for Seattle's Department of Transportation was developed by artist Daniel Mihalyo (link provided in Resources). One of the ideas from the plan that has been enacted is a residency at the Fremont Bridge. Outcomes have been a literary work on Seattle's history by Elissa Washuta and a sound installation, "Bridge Talks Back", by Kristen Ramirez.

Creative Community Housing Project

This residency, run by The Creatives Project of Atlanta, offers free studio space and subsidized housing to six artists, with the intent of "nurturing the arts eco-system through arts education service". Artists are nurtured and mentored themselves, and also give back through the Community Arts Program.

PROJECT MATRIX

	LOCATION	civic buildings	river	tib	tukwila village	southcenter	parks	infrastructure	non-place-based
TYPES OF PROJECT									
permanent		■		■				■	
temporary			■			■	■		
community engagement			■	■	■				
civic residency									■
gatherings/ events			■	■	■				
environmental			■			■			

THE TOOLKIT

THE ARTS COMMISSION

With the new % Ordinance, the Arts Commission will have broader responsibility than in the past. Commissioners will work in partnership with staff to uphold the ordinance. They will partner with staff to bring the program to fruition using this plan as a platform to frame and realize the most creative, productive uses of the available % funds in the near future. Additionally, Commissioners effectively become front-line arts and culture advocates within the community, further broadening the program's impact. Commissioners can craft multiple ways to actively build bridges between the community and the arts beyond the projects funded by the % funds.

Developing a specific addendum to Tukwila's standard commissioner handbook will be a very helpful first step in clarifying the Arts Commissioners' roles. Clearly outlining responsibilities establishes an environment that supports members working together effectively. Beyond specific responsibilities, the addendum would outline how the Commission interacts with staff, methodology for picking new members, budget review, project review procedures, etc.

There are many local examples of municipalities Tukwila's size that have developed standards for their arts commissions. Communities such as Shoreline, Edmonds, Kent and Redmond have long-standing programs with arts commissions. There is no reason to reinvent, but rather reviewing and gleaning from these other municipalities would be efficient.

STAFFING AND CONSULTANTS

For a program such as Tukwila's, it would be best, and even necessary, to have dedicated staff time allotted for the program to thrive and grow. For example, Shoreline has a ½ time FTE that is able to do excellent work continually developing their program and advocating for the arts within the community and City staff. Depending on Tukwila's budgetary ability initially, the City could consider hiring a person experienced in public art for a specific contractual period. This would be very helpful in getting the program off to a strong start in the initial 2-3 year period.

Since the arts are seen as a strong additive to a city's economy, arguments can be made to invest in dedicated staffing. It is very difficult for an existing staff member to take on an arts program along with other responsibilities. Our metropolitan area has a wealth of people in the arts that are looking for just such a job. They come with exceptional skills that will quickly help establish and evolve a program.

Small arts programs, especially if there is not dedicated staff, find it difficult to run artist selection processes and larger art planning efforts. It is more efficient and cost effective to use outside consultants to handle these occasional processes.

We are fortunate to have very good resources within our larger area. One notable resource is 4 Culture's Public Art Program. There are also very competent individual arts consultants that can undertake this work.

BI-ANNUAL PLANNING

A public art budget is typically tied to the ordinance. Certain projects in the Capital Improvement Plan (CIP) generate the % dollars. Because CIP projects are based on multi-year projections and then outlined for the next fiscal year, it is possible to plan forward for the % for Art money that will be generated.

The responsible City staff member should outline a 2-year plan for the use of these monies and present this plan of monies tied to project type and schedule for the Arts Commission to make a recommendation for approval, based on the priorities of the Art Plan. Having a clear plan for project types and expenditures is essential to effectively have art that achieves the vision and goals set out by the City. Once the plan gains approval, projects unfold accordingly.

INITIAL PROJECT FRAMEWORK

This plan proposes the City develops an initial plan that outlines the “What, Where & Budget” of projects for the first 2 years of using the % Ordinance. In this initial framework, an exploratory range of carefully selected arts & cultural projects with desired impacts would be shepherded forward. At the end of each year, it is recommended that the projects be assessed for level of success by staff and Arts Commission. At that point, appropriate tweaks and adjustments would be made based on what is being learned to be particularly effective for the Tukwila community.

The Initial Plan allows the arts programming to be flexible and responsive to the unique circumstances at play in Tukwila.

The arts program would become a *living program* that deliberately activates and

ASSESSMENT PROCESS

An assessment matrix, based on the intent, vision and goals of *Tukwila Arts*, should be developed to determine successes, lessons learned, impact and balance of project types that is aligned with the vision and goals of the program. The City would determine the best way get feedback from the community to couple with internal City staff assessment, The finding of the assessment process would be presented to the Arts Commission for discussion and to determine to continue with the remaining projects outlined in the 2 to 3-year planning framework or to make specific, informed changes.

PARTNERSHIPS

The reach of the 1% for Art program could be greatly expanded and energized by developing partnerships with existing organizations that currently have interesting relationships to the community. This would increase the ability of the program to be unique to Tukwila.

A sampling of groups, non-profits and institutions to partner with are:

- Action Tukwila
.....
- Tukwila and Highline School Districts
.....
- King County Library
.....
- Non-profits working with diverse populations
.....
- Sounders
.....
- Local businesses
.....
- SHAG
.....
- Museum of Flight
.....
- Forterra
.....

Public art (including larger scale imaginative sculptures) adds to the ambiance of a place. Little, if any, public art exists in Tukwila.—Tukwila Brand Fieldwork Research

BEYOND THE 1% FOR ART ORDINANCE

Support cultural understanding of City staff

Beyond the 1% for Art money, it is also possible for the City to develop an internal climate where staff is consistently factoring in arts & culture as a component of how they scope upcoming City projects, policies and initiatives. It is possible to add in a line for arts activity beyond the % for Art ordinance.

Artists on Design Teams

Additionally, the City could decide to request that artists with public art experience be added to teams applying for City CIP projects. Or if projects are being developed internally, staff could bring an artist on for certain input, etc. to collaborate with staff. Again, this would be added to the overall budget as a line item. This approach is stated in the goals. To insure that the firms understand what the City is looking for, a comprehensive approach stated in a policy with specific language should be developed that would then be used in every RFQ the City publishes.

Funding for creative projects

There is also the opportunity to use some of the arts funds to seed a range of activity in the City that is generated by groups and neighborhoods. For instance, small City granting programs for various neighborhood initiated projects can be used to evolve community understanding of the role the arts play in strengthening their community. As well, adding someone who is well versed in creative thinking on projects would enhance a sense of place as well as broaden the potential approach and impact for community-based projects.

Collaborations

With an Art Plan and a staffed Arts Commission, Tukwila will be well placed to take advantage of a variety of partnership opportunities. These may include business owners who are interested in providing public art; institutions such as schools and libraries; community groups and non-profits. Tukwila has already had major successes in the work with community groups such as Action Tukwila and non-profits including Forterra.

ARTIST SELECTION PROCESS

CALLS FOR ARTISTS

Calls for artists are generally developed with input from appropriate staff tied to a particular project. They would be advertised with approximately 6-8 weeks to the deadline for submittal of qualifications. For many projects, it is preferable to have artists assigned to projects early on, so that they can incorporate art opportunities into the design of the project. Otherwise, opportunities can be missed, and the art can feel like an afterthought.

There are several options for artist selection. First is an open call, where any artist may apply within a described geographic area. The open call typically includes a description of the project, eligibility and any other requirements, and the budget. There are several services that manage the submissions if Tukwila does not want to coordinate the submission internally. One that is used by many programs is CaFÉ (CallForArtists.org).

The most typical method of artist selection recommended is a Request for Qualifications (RFQ). That allows artists to be selected directly on the strength of past work and expressed understanding and interest in the particular project. RFQ's typically select a short list of artists to interview in order to determine the final selection of the project artist. This process then asks the selected artist to research and interact with the community, the project site, City department staff, etc. The result is that the artist understands more deeply the community and place

where the artwork or art activity will live or happen allowing the development of a concept that will more likely resonate and fully contribute to the cultural life of the community. There is the added benefit of having a richer interactive exchange between artists and community during the concept development phase. This process fully realizes the potential and benefits of having artist working within a community and public spaces.

Over the past several years there has been a return to public art programs using a Request for Proposals (RFP). The RFP typically asks a small group of selected artists to submit a proposal or concept for the art; best practice would reimburse artists for creative work done to create a concept for the art. This process is not recommended, as it would not allow commissioned artists to fully explore the complexity of Tukwila before developing a project idea.

Another option is to create an invitational list, with a small number of artists appropriate to the project solicited to apply. The list can be compiled through the recommendations of a panel or contacting other public art programs. This is particularly appropriate if the art project needs someone from a particular discipline or with specific previous project expertise.

The third option, direct selection from a roster may only be possible for small projects with budgets that do not require a more involved competitive process. For example, for artist-led events or social practice projects the City may put out a call for artists that results in a roster of qualified artists from which artists could be directly selected as different opportunities are planned and scheduled.

SELECTION PANELS

All selection processes for public art require a selection panel be organized that has the expertise to make a qualified decision. Panels are usually kept reasonably small – 3-4 people. Panel participants usually have a working public artist or artist familiar with art in public places, those from the design professions and perhaps a community member tied to the project location. It is also common to have non-voting members of a selection process that represent the community, the City department, etc. They can offer more insight and information to the voting panel that helps make a beneficial selection.

If possible, panelists should be given a small honorarium for their time.

CONTRACTS

Once the panel has selected an artist they will need a contract to enable them to commence with the services you have determined in your call, or through discussion with the artist. The contract should address timeline and process for development and acceptance of a concept, payment schedule, copyright, and many other topics.

There are many sample contracts available to adapt for your use. Tukwila can adapt a contract template from another program through the City's legal department. It is suggested that you use a contract from one of the local public art programs with extensive experience.



Multiplicity, John Fleming

RESOURCES

ORGANIZATIONS

GENERAL

Forecast Public Art – Public Art Toolkit

A long time non-profit dealing with public art – wonderful nuts & bolts website

<http://forecastpublicart.org/toolkit/>

Americans for the Arts – Public Art Network (PAN)

PAN has a lot of helpful information on administrative aspects of public art programming

<https://www.americansforthearts.org/>

LOCAL

Seattle Office of Arts & Culture

<http://www.seattle.gov/arts/programs/public-art>

4Culture

<https://www.4culture.org/>

Shoreline Public Art Program

<http://www.shorelinewa.gov/government/departments/parks-recreation-cultural-services/events-arts-and-culture/public-art-program>

Edmonds Public Art Program

<http://www.edmondswa.gov/homepage/explore-more-news/197-government/boards-commissions-committees/arts-commission/1316-edmonds-public-art.html>

Redmond Pubic Art Program

http://www.redmond.gov/ParksRecreation/artsandculture/visual_arts/

Artist Trust

<https://www.artisttrust.org/>

PUBLICATIONS

PUBLIC ART BASICS

Public Art by the Book

Barbara Goldstein (former head of Seattle and San Jose, CA public art programs)

Public Art by the Book is a nuts and bolts guide for arts professionals and volunteers creating public art in their communities.

“What is Public Art”, Association for Public Art, article
<http://www.associationforpublicart.org/what-is-public-art/>

CALLS FOR ARTISTS

Abridged Call for Artists Guidelines

Americans for the Arts

http://www.americansforthearts.org/sites/default/files/pdf/2013/by_program/networks_and_councils/public_art_network/CallforArtistsGuide_Abridged.pdf

ARTIST RESIDENCIES

RAAC—Regional Arts and Cultural Council

This public art program, serving Oregon’s Clackamas, Washington and Multnomah’s counties, has a number of different residencies to look at for inspiration. The sample call for a neighborhood artist-in-residence opportunity can be found at:

<https://racc.org/resources/listings/racc-public-art-opportunity-humboldt-neighborhood-artist-residence-portland/>

Artist Residencies in the Public Realm: A Resource Guide for Creating Residencies and Fostering Successful Collaborations, Office of Public Art, Pittsburgh, PA

https://www.pittsburghartscouncil.org/storage/documents/Artist_in_the_Public_Realm_Residency_Resource_Guide.pdf

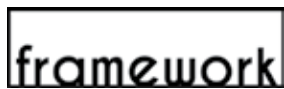
Seattle Department of Transportation Art Plan

Part 1

<http://www.seattle.gov/Documents/Departments/Arts/Downloads/Arts-Plans/SDOTartplan1.pdf>

Part 2

<http://www.seattle.gov/Documents/Departments/Arts/Downloads/Arts-Plans/SDOTartplan2.pdf>



TUKWILA ARTS

*Implementation Plan for
Public Art 2018-19*

APRIL 10, 2018



**Carolyn Law &
Framework Cultural Placemaking**

OVERVIEW

With the adoption of the Tukwila Municipal Arts Plan, the City is concurrently launching its first implementation plan for public art. The first round of projects will focus on engaging a wide range of community members to explore and test the possibilities of art that supports the goals of the Tukwila Municipal Arts Plan.

GOALS

This first round of projects is also intended to result in a better understanding of the interests of the community and the most valuable opportunities offered by the key places in Tukwila. The lessons learned will set the stage for thoughtful and effective art and arts programs in the years to come.

The goals of the first round of projects are to:

- Make the arts visible in the community, and a source of conversation and inquiry
- Explore and test opportunities for art
- Engage a wide spectrum of community members and City staff
- Focus on key geographic areas that connect the diverse neighborhoods of Tukwila
- Use funds available strategically

BUDGET

Funds from qualifying projects are identified and annually transferred to the Arts 1% fund. These funds do not all need to be used in the calendar year, and it would be prudent to retain some of the initial funding until there is some exploration regarding the priorities of the community.

SCHEDULE

The schedule graphic shows that in 2018, the Municipal Arts Plan and Implementation Plan are to be adopted, and a Call for Artists sent out for the first round of projects. Assuming that these initial projects are artist residencies, the projects would extend from 3rd Quarter 2018 through summer 2019.

SCHEDULE

	2018				2019			
	Q1	Q2	Q3	Q4	Q1	Q2	Q3	Q4
Adopt Municipal Arts Plan & Implementation Plan		■						
Send out Artist Call for first two projects		■						
Engage artists			■					
Artists Residencies			■					
Reading on the River			■					
Residency assessment points				■	■	■		
Lessons learned from Residencies					■	■		
Biennial Program Review								■
Plan next round of projects								■



Maria Moleni, "Hard in the Paint" basketball court, done while an Artist-in-Residence with City of Boston

PROPOSED PUBLIC ART PROJECTS 2018/19

Two simultaneous Artist-in-Residencies of a one-year duration are recommended that will explore two important focus areas of the Tukwila Public Art Master Plan – *Tukwila Arts*. The two areas are the River and Tukwila International Boulevard.

WHAT IS AN ARTIST-IN-RESIDENCY?

The role of the Artist-In-Residence is to instigate thoughtful and stimulating experiences and ideas through a variety of creative means and processes. An AiR explores and celebrates community character. Artist-in-Residencies (AiRs) produce a variety of creative interactions for community members of all ages and backgrounds.

An artist, who is “embedded” in the community, generates a series of out-of-the-ordinary interactive experiences that engage people in diverse ways allowing them to relate to each other and explore the place they live in. These activities reveal different aspects of the complex, evolving character of a town’s culture and sense of place including population demographics, linguistic characteristics; physical and natural resources; cultural history; climate; customs; landscape features; and built and infrastructure elements.

The goal of the residencies is to strengthen the sense of community among residents, reinforce a sense of belonging to their place, enable the community to more deeply relate to the wonderful complexity of the City, and add delight to the lives of the residents.

WHAT CAN AN AiR ACCOMPLISH?

- Creatively animate public interactions and public space(s) – indoor, outdoor and online
- Provide multiple, connected opportunities for the community to engage with an artist and interact in stimulating ways with an important aspect of the City’s environment through creative practices and activity
- Broaden the experiences community members have with others supporting more sharing and understanding of what makes up their community as well as the physical place they live in
- Contribute to generating a sense of civic pride and having a stake in where people live



Drumming led by artists-in-residence at Manheim County School District, PA

WHY START WITH AiRs?

As Tukwila embarks on their public art program, AiRs allow many types of interactions and on-going creative experimentation that will allow the City to assess what kind of cultural activities the community particularly connects with and enjoys. Additionally, the City can assess what aspects of the river and TIB would benefit from other art interventions including permanent artworks.

Having the broadest range of creative activity will give the City and Arts Commission more to assess regarding how the community benefits and appreciates this new offering of public art, allowing the next stage of planning to be well-based in community priorities.

Setting up two simultaneous residencies will result in an interesting variety of potential activities for the community. And the artists can support and collaborate with each other deepening their creative capacity to think of ways to engage people and place.

Importantly, AiRs can establish multiple collaborative relationships. The artists can go internal to the City to help staff develop an understanding within City departments of the powerful role arts & culture can play for their work on infrastructure, CIP projects, community programs. The artists will be able to establish relationships with multiple community members and groups, Tukwila schools, and various non-profit, service and other organizations.

TUKWILA AiRs

Tukwila's artist-in-residencies will explore two of the Public Art Master Plan focuses - the River and the TIB. These two focuses are very important physical, environmental, and social aspects of the City's environment. They intersect with many daily aspects of community life. Both areas will benefit from creative attention that will heighten the visibility, understanding, and use by the community and visitors. Additionally, they can enhance the aesthetics and character of the TIB and deepen the use and appreciation of the beauty of the river.

The activity of the AiRs will be generative in nature and prioritize creative engagement with issues and ideas over the production of permanent art works. They are centered on creating experiences, enabling collaboration, and building relationships through direct involvement of Tukwila's diverse residents.

Programs developed by artists may include, but are not limited to, creatively framed conversations or dialogues, interactive performances, purposeful creative social activities, temporary art installations, and workshops. Residency activities may take place at various sites in relation to the River or the TIB, including indoor and outdoor civic or public spaces and infrastructure.

Each residency's activities and outcomes are not predetermined, but will be developed by the artist in relation to a deepening understanding of the community and the "place" of Tukwila.

RELATIONSHIP OF AiRs TO CITY DEPARTMENTS & STAFF

There would be on-going contact and collaboration with various City staff and the Arts Commission over the period of the residency. Additionally, as artists explore the community further, it is likely that they can plant the seeds of future collaborative possibilities with civic groups and non-profits.



Vaughn Bell, 45th Street Viaduct Approach, as Seattle Department of Transportation Artis-in-Residence



Mierle Laderman Ukeles, Mirrored Garbage Truck, NY Department of Transportation Artis-in-Residence

WHAT THE AiR BUDGET COVERS

Each AiR would function as half time work for the selected artist with a proposed budget of \$30,000 which is inclusive of artist's time for all aspects of the residency – research, meetings, planning and implementing for all activities. Each artist would set up a regular schedule for times they will be in the City, independent of engagement activities.

A materials budget of \$10,000 could be used on request to buy needed supplies for activities, temporary installations, etc.

It is suggested that the AiR artists have access to a regular space/desk and “office hours” within the City offices to support interactions with staff. A dedicated space and hours where community members know they can regularly find the artists would also be beneficial. All of these details are to be determined as artists understand more fully how best to work within the context of the City and their focus area.

Finally, because the river focus overlaps with the proposed Public Works site and the TIB overlaps with the proposed Public Safety building site, it would be beneficial to have the artists' thought on these locations as the City explores what kind of public art projects could be developed for these important City facilities.

THE TWO AiRs

RIVER-BASED ARTIST-IN-RESIDENCY

The river is a winding spine that runs the full length of Tukwila, and is central to the history of the people of the valley. In some ways the river creates a barrier for people to connect from one side to the other. In other ways, it provides a connection along the length of the city. It has been shaped over time from the confluence of the Black and White Rivers into the Duwamish River, and has been part of Tukwila history from its agricultural roots to the industrial era. An artist, working with the community, can imagine what future roles could mean for the Duwamish and for Tukwila.

An AiR could include an interpretation of the river's history and ecology, and its connection to the people that have lived alongside and nearby over time – highlighting changes and relationship. There are already excellent examples to begin with—public art at Duwamish Hill and Duwamish Gardens Park, events at Fort Dent and the Community Center. In 2015, artist Greg Bem organized Tukwila Revealed, a walk along the river interspersed with performance, storytelling and art-making.

An artist-in-residence could draw on the many examples of river-related public art that have celebrated and activated waterways, and strengthened connections between communities and riverfronts. An artist-in-residence could lead an arts-based program that would be a part of the summer's Reading on the River program.



EARTH Celebrations sponsors multiple artist-in-residencies for social art practice and ecology; Hudson River Pageant, New York



Greg Lee, Artist-in-Residence, Yesler Terrace, Vietnamese/Cambodian Garden tours as part of community trust building



Ann Hirsch, Safety Orange Swimmers, temporary installation, Grand Rapids MI, each figure represents a million refugees worldwide

TIB-BASED ARTIST-IN-RESIDENCY

The Tukwila International Boulevard (TIB) is an important transportation corridor and connector in Tukwila for the western side of the City. While the current physical environment of the TIB is very mixed and presents more as a classic “strip”, the physical, commercial, and social character is evolving rapidly. The City has supported the implementation of development that will transform the TIB into more of a “place”. This involves a restructuring of the road itself to slow traffic, denser housing within proximity to the light rail station, eventual location of a major City public safety building, community amenities such as a library, commons building with a plaza, and more.

This residency will focus on the length of the TIB, but with an initial focus on a core area of the TIB at the S.144th Street & TIB intersection. This area is evolving as the Tukwila Village. This includes a well-used branch of the King County Library system, the first new SHAG housing primarily for +55 seniors, and some live/work units along with considerable future housing, a Community Commons building with a meeting room, café and outdoor gathering plaza. With this unfolding development, the TIB currently feels like it emanates north and south from the Tukwila Village core.

The TIB also houses many small commercial enterprises that reflect the deep diversity of Tukwila’s community. The hope is that the evolution of the street will continue to support this activity as it is part of the unique character of the community and City.

The TIB AiR could focus on activities that bring people to this core area strengthening a sense of community ownership, explore ways of adding temporary enhancements along lengths of the TIB or at specific intersections, highlight neighborhood pedestrian crossings along the corridor, “claim the corridor” by giving it a unique cultural character, and more. Beyond the core, the AiR can then explore the length with the south point anchored by the light rail station and eventually the public safety building and a northern point where it crosses the Duwamish River and the Green River Trail.

There are many potential partnerships for this residency including the King County library, SHAG, Foster High School, Action Tukwila, Forterra, among others.



Olaniyi Akindiya Akirash, Artist-in-Residence, BSaso L'Oju Egun- Behind the Mask, Community Collaboration, Austin TX

Each AiRs has a proposed total budget of \$40,000:

- \$30,000 for the artist time to work in the City with their focus area at approximately half time for one year***
- \$10,000 to allow the purchase of necessary supplies for interactive activities, temporary art works, etc.***

LOOKING AHEAD FOR FUTURE 1% FOR ART PLANNING

UPCOMING CIVIC PROJECTS

With the 2016 approval of the Public Safety Plan, several significant public projects are in the planning stages: three fire stations; the Public Works Shops, and a Justice Center. These projects are important civic buildings.

The sites have some potentially powerful attributes for art and for Tukwila's identity. The Public Works Shops, on South 112th Street between Tukwila International Boulevard and East Marginal Way. The shops will be visible along both TIB and East Marginal Way and act as a marker for the northern edge of the City in relation to the important river. The Justice Center site, also on TIB, is highly visible and needs artistic consideration as a civic symbol and in order to integrate it into the kind of neighborhood that is desired for the future of the TIB. This project can also impact the character of the TIB substantially and work with other projects that can be implemented during and after the AiR for the TIB.

LESSONS LEARNED FROM AiRs

The Artists in Residence programs will ideally engage a wide range of community members in the arts and the potential for arts and culture in Tukwila. It will be important to learn from the AiRs about community interests, opportunities and priorities. This aspiration should be clear in the selection process and codified in a series of moments where "lessons learned" can be shared during and after the residencies.

IMPLEMENTATION REVIEW

In the fall of 2019, a look-back at the initial round of projects, the role of the Arts Commission, and the relationship of the Arts Plan to the community, to partners and to City staff should be reviewed.

PRIORITIES

The AiRs and other community and partner conversations should be the basis of setting priorities for use of funding for art. Consideration should be given to refining the opportunities outlined in the Art Plan, and balancing types of art (permanent, temporary, art-based events etc.) and the amount of funding for civic buildings and infrastructure vs key community locations.



Caleb Duarte, Artist-in-Residence, with forty undocumented youth in foster care, Oakland CA

SAMPLE AiR CALL

The following is an example of a Request for Proposals for an Artist-in-Residence, released by the City of Seattle . It is included as a template for the kind of information included in an AiR call.

SAMPLE RFQ ----- FREMONT BRIDGE ARTIST-IN-RESIDENCE

Introduction

The Seattle Office of Arts & Culture (ARTS), in partnership with the Seattle Department of Transportation (SDOT), seeks a practicing composer and/or musician to be an Artist-in Residence in the northwest tower of the Fremont Bridge. The selected composer and/or musician will undertake an in-depth exploration of the historic bridge's role and meaning for the city of Seattle and create music in response to this residency.

Background

The Fremont Bridge has four control towers with a bridge operator working out of the southeast tower. The bridge opened in 1917 and is listed on the National Register of Historic Places. It is the key transportation link between the Fremont, Queen Anne and Westlake communities. Fremont Bridge is a bascule or draw bridge that swings upward. The Fremont Bridge averages 13 openings per day, with as many as 35 openings on a summer day, making it one of the busiest bascule bridges in the world. A bridge operator is on site every day in the southeastern tower, the only tower actively used for bridge control. The two towers on the north end of the bridge are unoccupied. The northwest tower will be used as the studio for this residency opportunity. It measures approximately 13 feet by 8 feet, has 10-foot ceilings and is furnished with a desk, chair, overhead lights, windows, and an air conditioning unit. The tower's windows feature 360-degree views of the surrounding area.

Art on the Fremont Bridge

This opportunity marks the fourth art project associated with the Fremont Bridge's towers. In the 1990s, Rodman Miller's neon "Rapunzel" and "Elephant and Child" artworks were installed in the bridge's northern towers, where they remain. In 2005, artist Daniel Mihalyo recommended the creation of a bridge tower artist studio in an SDOT Art Plan he authored as part of an artist residency at SDOT. In 2009, artist Kristen Ramirez was selected as the bridge's first artist-in-residence and produced a temporary sound installation on the bridge combining oral histories with found sound. In 2016, writer Elissa Washuta used the tower as her writer's studio from which she researched and wrote two long-form essays about the history of Seattle's topography and waterways. This opportunity marks the first time an artist residency at this bridge is being offered to the music community.

More information about the bridge can be found at:

Seattle Department of Transportation
www.seattle.gov/transportation/bridges

SDOT Art Plan 2005
www.seattle.gov/transportation/artplan

Elissa Washuta, Writer in Residence, 2016
www.washington.edu/news/2016/06/21/qa-essayist-elissa-washuta-on-being-the-fremont-bridges-first-writer-in-residence-another-recent-award-and-her-upcoming-book

Kristen Ramirez, Artist in Residence, 2009
www.kristenramirez.com/work/bridge-talks-back

Seattle Municipal Archives Collection
clerk.seattle.gov

History Link
www.historylink.org

Scope of Work

Residency

Last year, the Fremont Bridge celebrated its 100th birthday. This coming summer 2018, a composer/musician will undertake an in-depth exploration of the historic bridge and respond to the experience with a sound-based project. The residency includes access to the northwest tower of the Fremont Bridge. Artists cannot live in the tower, but may use the space as a studio, a platform for observing the bridge and its surroundings, or as a base from which to interact with the community. Early in the residency, the artist will be asked to meet and discuss his/her approach to the residency project with staff from ARTS and SDOT. In consultation with staff, the artist will set studio hours and propose concepts for the musical project, its public presentation and documentation. The artist will be required to comply with a strict safety protocol while on the bridge, including communication with the bridge operator and restricted access to specific locations within the bridge. The artist residency will run from June through August 2018.

Project, presentation, documentation

The residency will include an ongoing public component such as a blog or social media posts, in addition to community engagement events. The residency will culminate in a musical work and public presentation of the work produced while in residence. The sound piece shall represent or illuminate some aspect of the bridge and the bridge's history, be it real or metaphorical. The artist will propose and implement public presentation(s) of the project through performance(s), public engagements, or other types of exhibition at locations and times to be determined in consultation with staff from ARTS and SDOT. While the artist retains the copyright, the sound piece shall be made available to the public digitally, residing on the ARTS website and potential other sites, depending on project partnerships. Where possible, ARTS staff will provide technical assistance, introductions to community resources, and other information as needed.

Following a public presentation of the work, the artist will provide high-quality documentation of the project for inclusion in the Municipal Art Collection. Documentation could be in the form of a CD, video/DVD, artist's book, print materials, select objects created/exhibited as part of the project, or other appropriate forms of documentation.

Eligibility

The call is open to established professional musicians/composers living in Seattle or within 100 miles of Seattle. The artist selection panel will consider artistic diversity as one factor in the selection process. Artists who are well represented or have received City Artist grants, may not be prioritized as highly as those who have not. Students are not eligible to apply.

Budget

The project budget is \$10,000 USD (\$5,000 for residency, \$5,000 for sound project, presentation, documentation), inclusive of all residency costs, project, presentation, documentation of the work, and applicable taxes. Payment will be made in installments based on benchmarks established by ARTS in consultation with the artist.

Application Deadline & Timeline

The application deadline is 10.59 p.m. (PST), Tuesday, March 20, 2018.

Tuesday, March 20, 2018, 10.59 p.m. (PST) – deadline for applications
Week of April 16 – April 20, 2018 – selection panel convenes to review applications
Week of April 30 – May 4, 2018 – finalists interviewed by selection panel
Late May 2018 – artist contracted
June, July, August 2018 – residency

Application Requirements

Applications must include:

- Letter of Interest (not to exceed 2,000 characters). Please provide a statement describing your interest in this particular residency addressing how you are uniquely qualified for this project, as well as information about how you work, what kind of music you are involved in, what you propose to create for this residency, and what you consider the role of music in civic life.
- Work Samples. Each artist may submit up to three (3) representative songs or compositions from their body of work, upon which the jurists will base their decision. Applicants will provide up to three (3) links to each song/composition via SoundCloud, Vimeo, or YouTube. Password-protected links will not be accepted,

due to time constraints during the panel selection process. Applicants who prefer private submissions may mail in a CD/DVD to: Kristen Ramirez, Office of Arts & Culture, PO Box 94748, Seattle WA 98124-4748. Please note that the selection panel will listen to songs/compositions at up to 1 minute/submission.

- **Résumé.** No longer than two pages. Your résumé should summarize your experience as a composer/ musician.
- **Three References.** Names, addresses, emails, and phone numbers for three professional references who can speak to the quality of your music and your potential to succeed in this residency.

Selection Criteria

The artist will be selected on the basis of the following criteria:

- Quality of music samples
- History of on-going growth and exploration; evidence of work across genres or in collaboration with other musicians
- Demonstration of commitment to the values of this project, which may include an interest in history, urban infrastructure, and/or Seattle's waterways.
- Strength, creativity, and appropriateness of letter of interest
- Evidence of artistic diversity

The selection process will take place in two parts. During the first round, a panel of music professionals, SDOT representatives and community members will review the applicants' work samples, qualifications and other materials. The panelists will identify up to four finalists to interview at a second panel meeting approximately one month later. The panel will select one composer/musician to be awarded the residency commission.

Questions

Please email Kristen Ramirez at kristen.ramirez@seattle.gov or call 206.615.1095 with any questions about this project.

Kristen Ramirez
Public Art Project Manager
Seattle Office of Arts & Culture and Department of Transportation
phone: 206.615.1095
email: kristen.ramirez@seattle.gov
web: www.seattle.gov/arts and www.seattle.gov/sdot

Street address: 700 Fifth Avenue, Suite 1766, Seattle, WA 98104
Mailing address: PO Box 94748, Seattle, WA 98124-4748

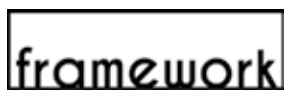
Commitment to Racial Equity

The Seattle Office of Arts & Culture commits to an anti-racist work practice that centers the creativity and leadership of people of color - those most impacted by structural racism - to move toward systems that benefit us all. We also acknowledge that we are on Indigenous land, the traditional territories of the Coast Salish people.

We envision a city of people whose success, safety and health are not pre-determined by their race. A city where all artists, performers, writers and creative workers have the freedom, agency and platform to share and amplify their stories, art, cultures and experiences. At the same time, we acknowledge that our actions - both conscious and unconscious, past and present - have benefited some communities while limiting opportunities and outcomes for communities of color. We work toward our vision by addressing and working to eliminate institutional racism in our programs, policies and practices.

In alignment with the City's Race and Social Justice Initiative, we seek new solutions that use arts as a strategy to drive not only our office, but the City as a whole toward racial equity and social justice. We will continue to break barriers and build arts-integrated tools that challenge the status quo, and push us toward the inclusive society we envision.

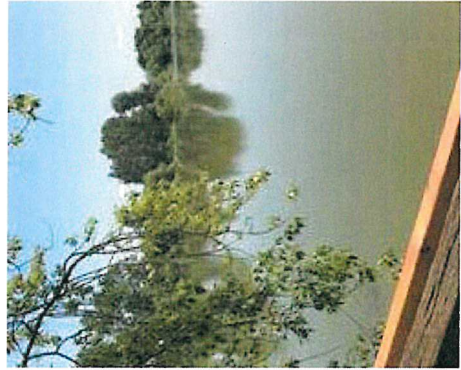
If you have any questions about our commitment, or would like to know more about the work we are doing, please call us at (206) 684-7171 or email at arts.culture@seattle.gov.





TUKWILA ARTS

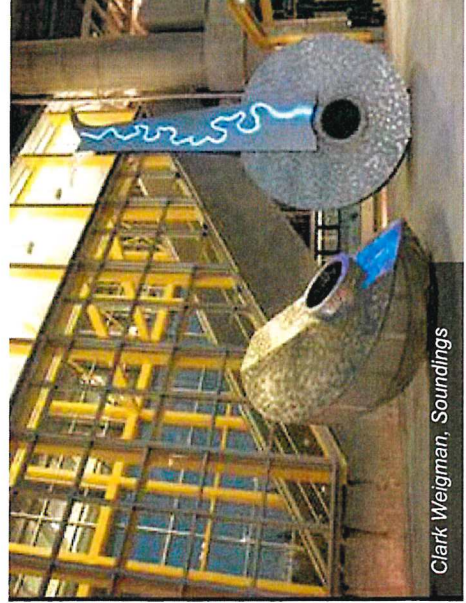
Tukwila Municipal Arts Plan



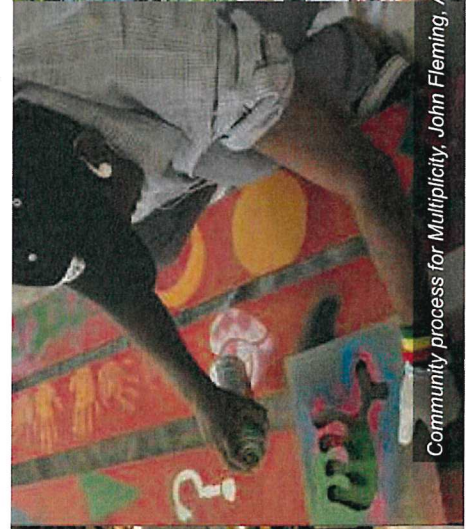
TYPES OF PROJECTS

The spectrum of art and culture in Tukwila will include:

- *Art at purposely selected civic buildings*
- *Art and culture that highlights the particular places that make Tukwila unique*
- *Community engagement projects that emphasize the creative process*
- *Community-wide culturally-based gatherings, events and performances*



Clark Weigman, *Soundings*



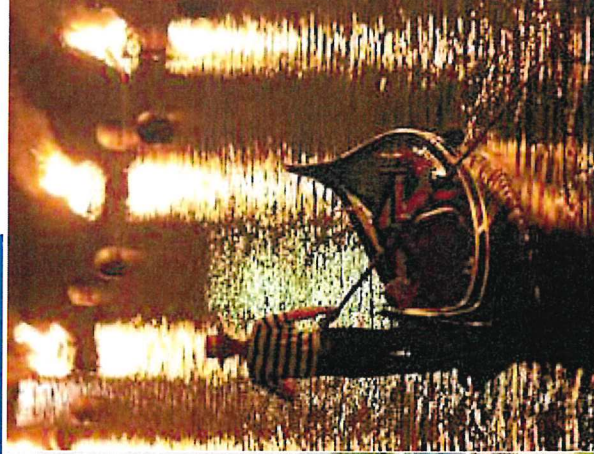
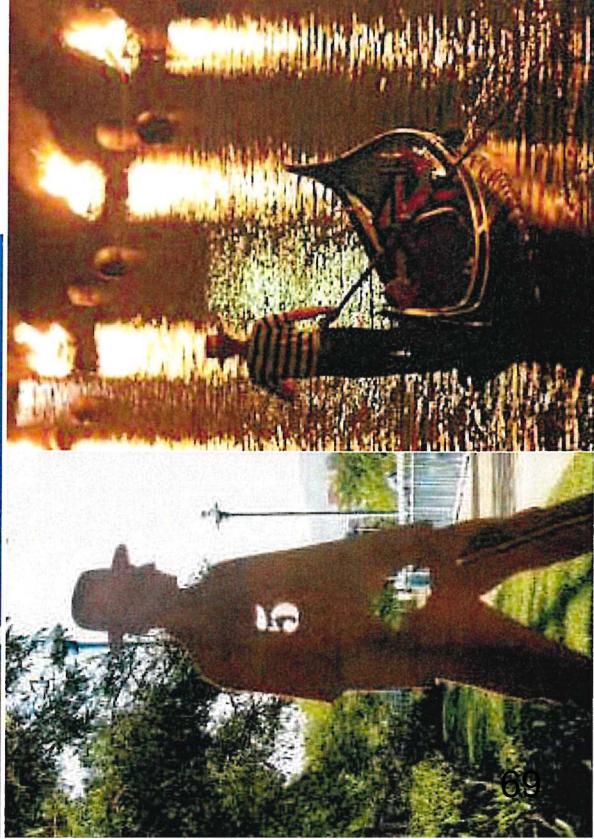
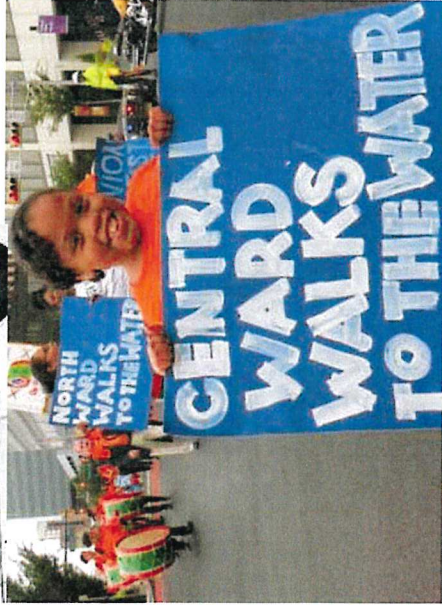
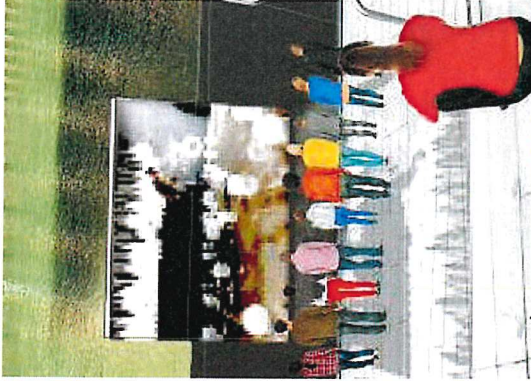
Community process for Multiplicity, John Fleming, Artist



City of Tukwila, Backyard Wildlife Festival

THE RIVER

WHAT CAN ART DO?



- *Art can help people connect to the river:*
- *Art can mark access points to the river with large scale, joyful installations.*
- *Art can mark sequence along the river*
- *The art could also define the Tukwila segment of the Green River Trail*
- *Increase the attractiveness of the river as a destination as a beautiful and humane place*
- *Build on the successful events already taking place near the river*

TIB TUKWILA INTERNATIONAL BOULEVARD



WHAT CAN ART DO?



- *Art can give identity to International Boulevard as a place with a rich culture and home to ethnic businesses*
- *Art can jump start a transformation of International Boulevard, as new businesses and new urban form take shape*
- *Art bring color and beauty to International Boulevard.*

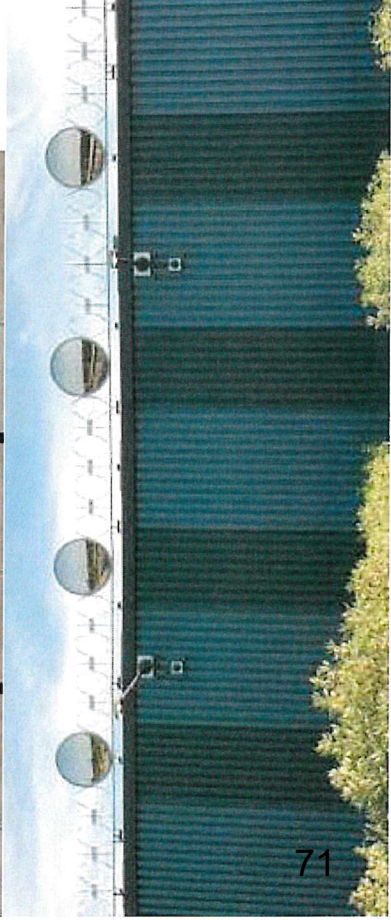
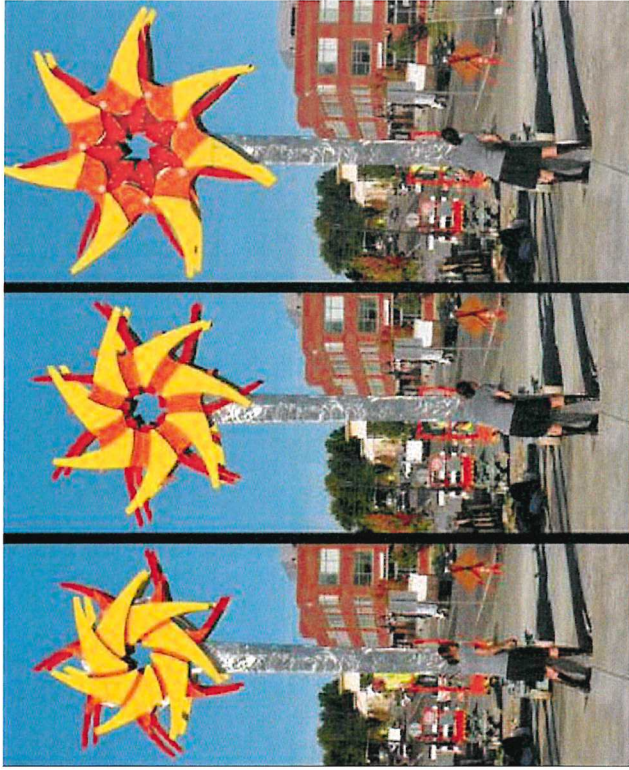


*Use banners, signage, and architectural and landscape elements to “advertise” the new identity throughout the TIB District
—Comprehensive Plan 8-24*

SOUTHCENTER DISTRICT

WHAT CAN ART DO?

- *Art can help Tukwila kick-starting their plans and help people imagine what the visions might feel like.*
- *Art can mark important places and help people find their way to destinations.*
- *Art can create and define space, making places that attract people and activities.*



TUKWILA VILLAGE

WHAT CAN ART DO?

- *Arts and culture can enliven and engage the community at many levels, sharing culture and celebrations with music, dance, art, traditions, and food.*
- *Arts and culture at Tukwila Village can be a model of the value of community engagement for other developments*



ARTIST-IN-RESIDENCE PROJECTS

WHAT CAN AN AIR ACCOMPLISH?

- *Creatively animate public interactions and public space(s) – indoor, outdoor and online*
- *Provide multiple, connected opportunities for the community to engage with an artist*
- *Broaden the experiences community members have with others*
- *Contribute to generating a sense of civic pride*