



INFORMATIONAL MEMORANDUM

TO: Community Development & Neighborhoods Committee
FROM: Rick Still, Parks & Recreation Director
CC: Mayor Ekberg
DATE: April 17, 2018
SUBJECT: RCO Grant Application

ISSUE

Seeking permission to apply for Recreation Conservation Office – Washington Wildlife and Recreation Program (WWRP) for grant funding to purchase property on S. 116th Street along the Green River.

BACKGROUND

The purpose of this memorandum is to seek permission to apply for Recreation Conservation Office – Washington Wildlife and Recreation Program (WWRP) for the acquisition of property along the Green/Duwamish River and adjacent to the Green River Trail. The application is due May 1, 2018 with follow up City Council by July 14, 2018.

At the February 26th meeting, the Community Development & Neighborhoods Committee gave staff permission to apply for King County Conservation Futures Trust Tax Levy (CFT) for the same property. The RCO grant would be the 50% match for the CFT grant.

The property under consideration for acquisition is located on S. 116th Street, identified in the accompanying documents, is nearly one acre, has 160 feet of waterfront and is adjacent to the Green River Trail. This property is located in close proximity to major capital investments for habitat improvements from North Winds Weir to Codiga Park. The property, being on the south side of the river, is in a key location to reduce heat retention with current and future trees providing shade on the water. The property is also prime for noxious weed removal and the addition of native plants for habitat restoration, stewardship and protection. The acquisition of this property is one more piece of the complex puzzle that builds upon the investments already in place for Chinook Salmon recovery.

The location of the property also provides great recreational opportunity for a park deficient area of Tukwila. It has potential to increase access to and use of a regional trail system by providing a respite area or trail head for recreational and commuter trail users.

DISCUSSION

The purchase of this property meets several of the recommendations in the City Council adopted 2014 Parks, Recreation and Open Space (PROS) Plan: increase access to walking and biking, add places for social gathering and increase access to forests and the river. Additionally, the property aligns with the Green Tukwila initiative adopted by City Council March 2017.

INFORMATIONAL MEMO

Page 2

The RCO grant program is a 50% match grant; and the application is due May 1, 2018. The CFT grant would be the match for the RCO grant. Staff would like to submit the application and continue to look for other funding opportunities to make up any match differences. Potential funding sources other than City funding that could be sought would include in-kind services, Flood Control District mitigation or grant funds, or King Conservation District funds and/or property donation. Since this is a relatively low overall acquisition cost it seems very likely that the match could be obtained. In the worst case of the match not being obtain, the City could tell the RCO program that we were not able to secure the property and give any money awarded back.

FINANCIAL IMPACT

The match for the grant would be approximately \$335,000. It is anticipated that other funding sources would be obtained to minimize direct costs to the City or the grant funds would be returned.

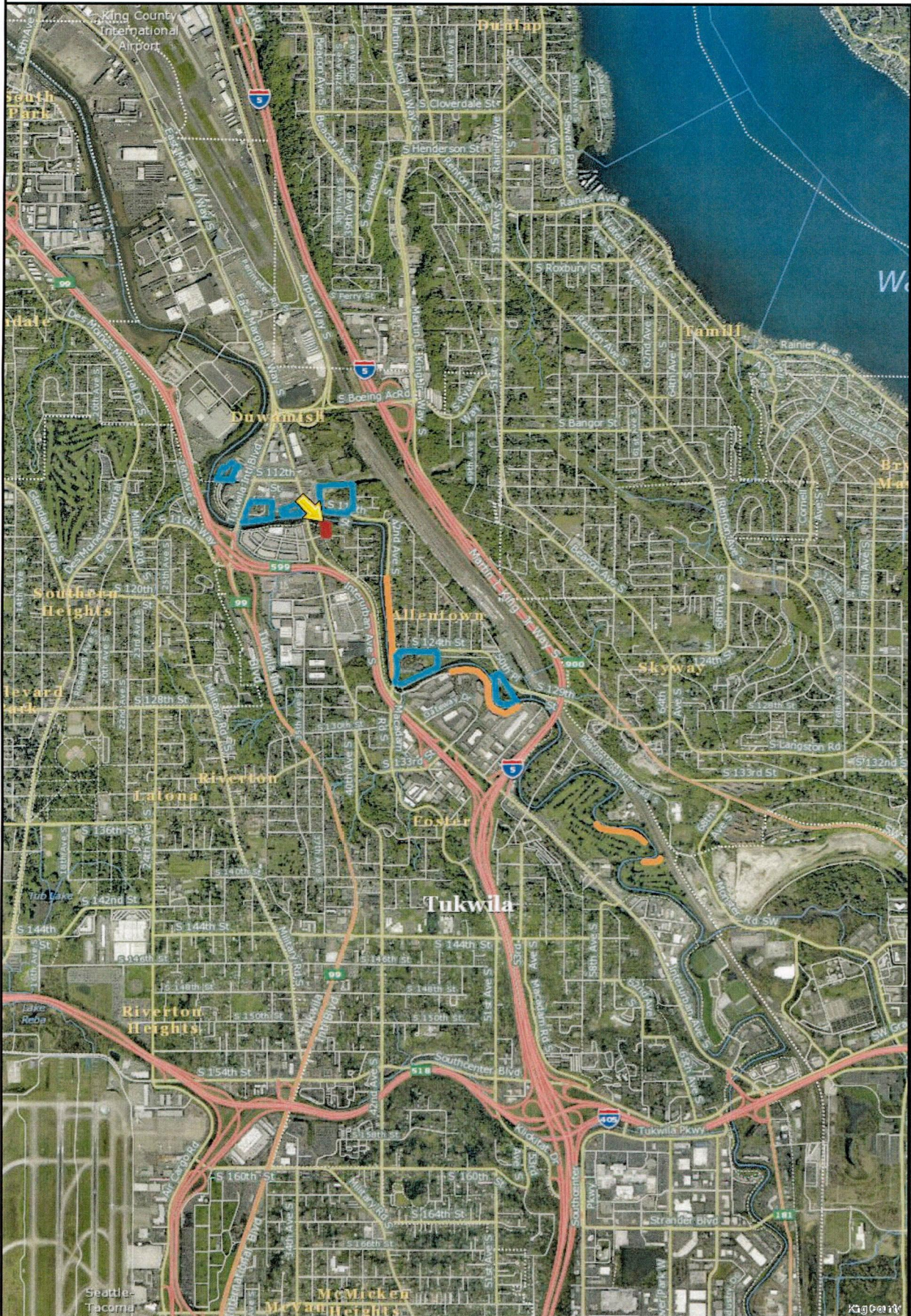
RECOMMENDATION

The Council Committee is being asked to consider permitting staff to apply for Recreation Conservation Office – Washington Wildlife and Recreation Program (WWRP) funding to purchase property on South 116th Street along the Green River.

ATTACHMENTS

- A. Location Map
- B. Restoration Investments Map
- C. Property Map

King County iMap



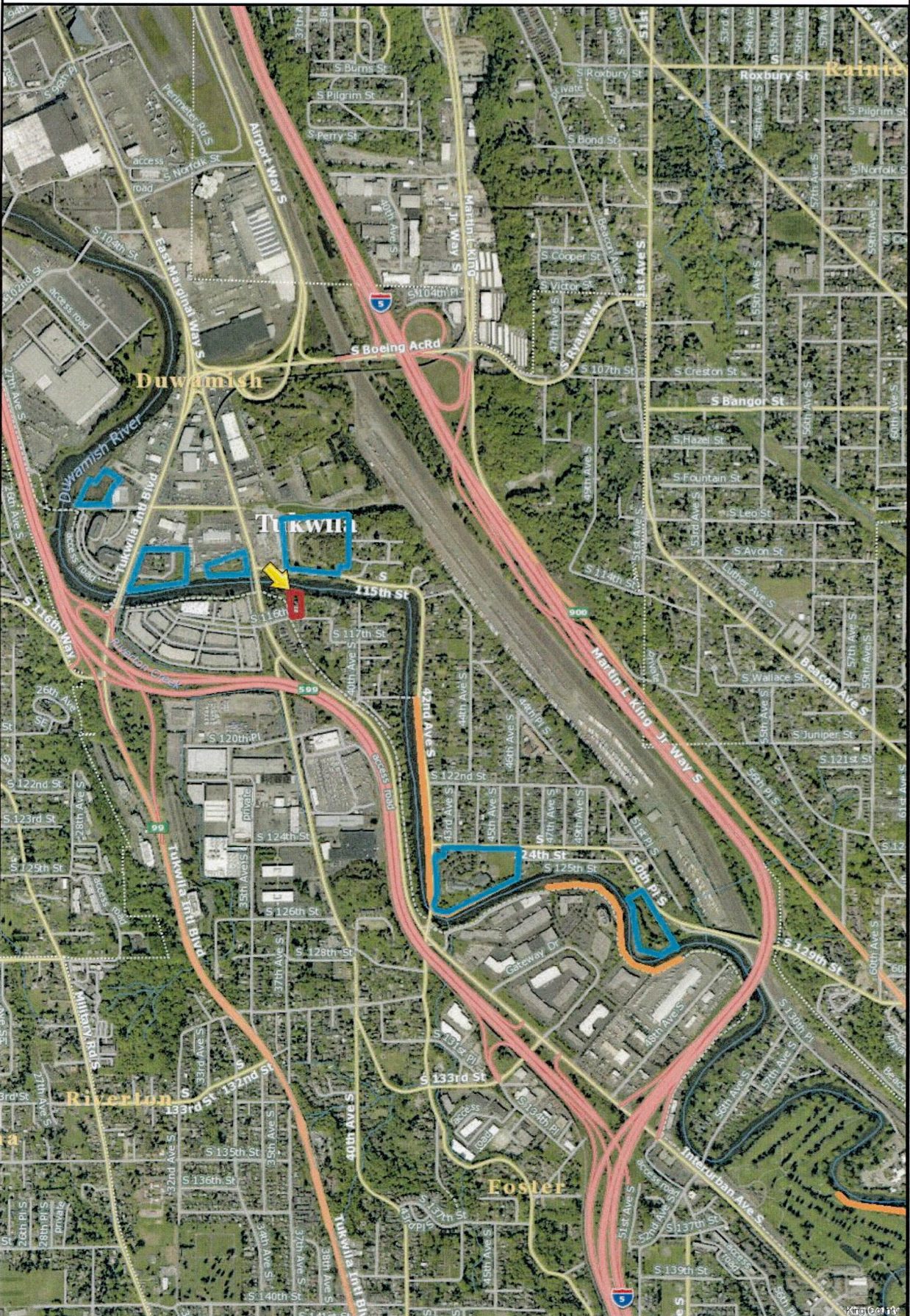
The information included on this map has been compiled by King County staff from a variety of sources and is subject to change without notice. King County makes no representations or warranties, express or implied, as to accuracy, completeness, timeliness, or rights to the use of such information. This document is not intended for use as a survey product. King County shall not be liable for any general, special, indirect, incidental, or consequential damages including, but not limited to, lost revenues or lost profits resulting from the use or misuse of the information contained on this map. Any sale of this map or information on this map is prohibited except by written permission of King County.

Date: 3/6/2018

 **King County**
GIS CENTER

Tukwila CFT: Parcel #07 33000225


King County iMap



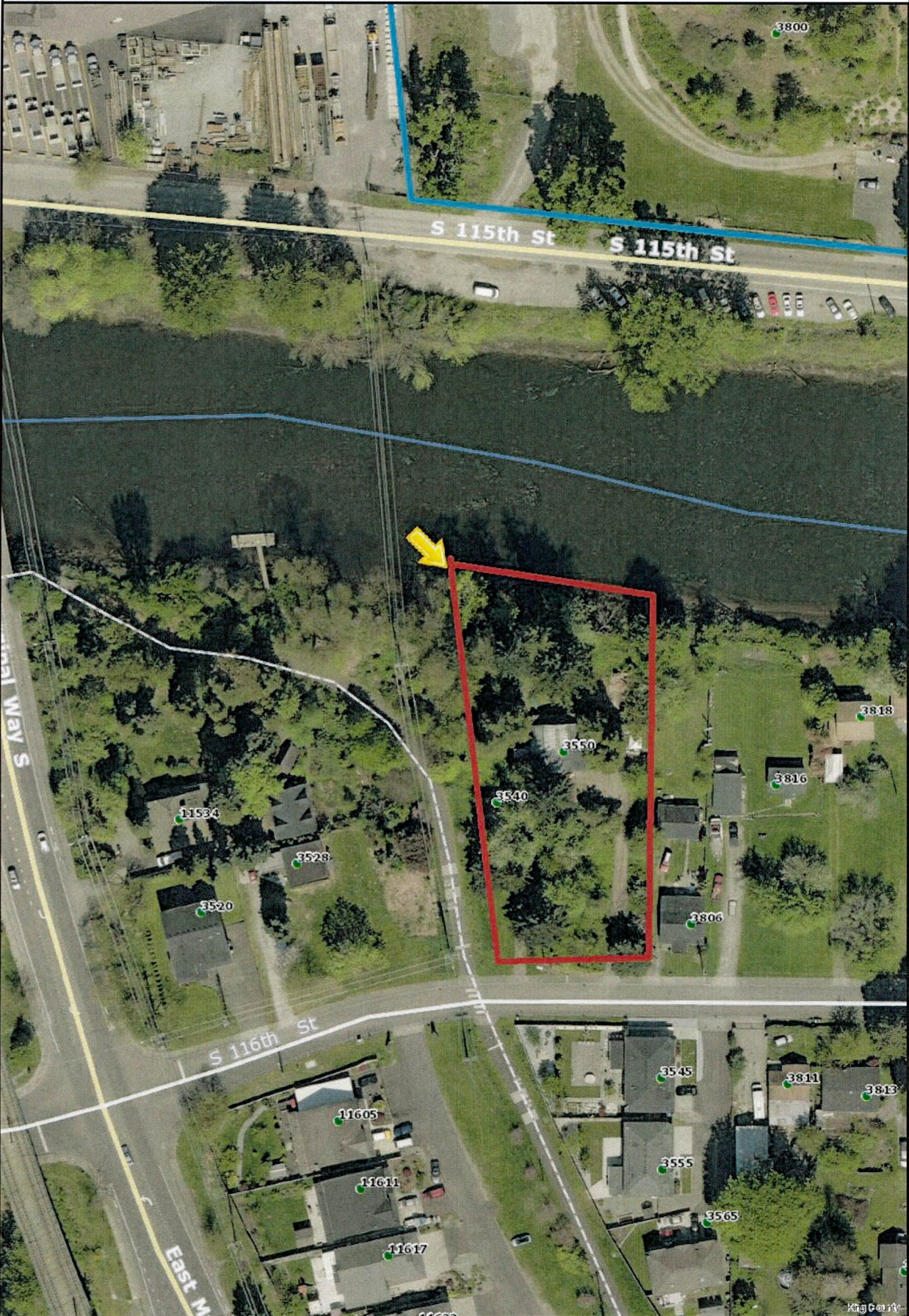
The information included on this map has been compiled by King County staff from a variety of sources and is subject to change without notice. King County makes no representations or warranties, express or implied, as to accuracy, completeness, timeliness, or rights to the use of such information. This document is not intended for use as a survey product. King County shall not be liable for any general, special, indirect, incidental, or consequential damages including, but not limited to, lost revenues or lost profits resulting from the use or misuse of the information contained on this map. Any sale of this map or information on this map is prohibited except by written permission of King County.

Date: 3/6/2018

Tukwila CFT: Parcel #07 33000225

 King County
GIS CENTER

King County iMap



The information included on this map has been compiled by King County staff from a variety of sources and is subject to change without notice. King County makes no representations or warranties, express or implied, as to accuracy, completeness, timeliness, or rights to the use of such information. This document is not intended for use as a survey product. King County shall not be liable for any general, special, indirect, incidental, or consequential damages including, but not limited to, lost revenues or lost profits resulting from the use or misuse of the information contained on this map. Any sale of this map or information on this map is prohibited except by written permission of King County.

Date: 3/6/2018

Tukwila CFT:Parcel #07 33000225



King County
GIS CENTER