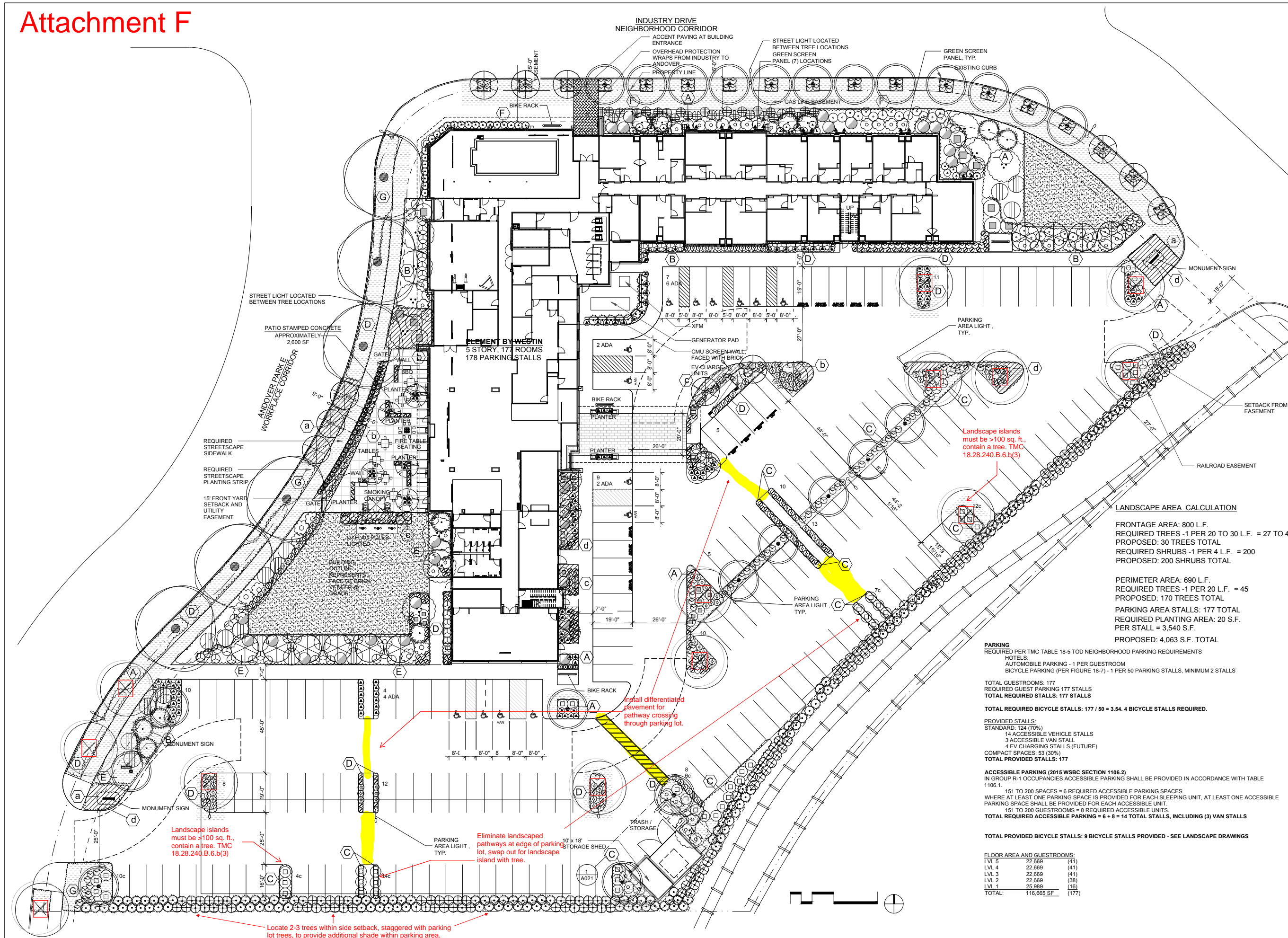


Attachment F



JGM
LANDSCAPE ARCHITECTS
 INCORPORATED P.S.
 LANDSCAPE ARCHITECTURE
 URBAN DESIGN
 SITE PLANNING
 PARKS AND RECREATION PLANNING
 12610 NE 104TH ST.
 KIRKLAND WA 98033
 PH: 425.454.5723
 FX: 425.822.3525
 E: jgm@jgm-inc.com

ELEMENT BY WESTIN
 515 INDUSTRY DRIVE
 TUKWILA, WA 98188

FOR:

REVISIONS/DRAWING ISSUES:
 8-14-2018

Drawn by:
 Checked by: CL

LANDSCAPE AREA CALCULATION

FRONTAGE AREA: 800 L.F.
 REQUIRED TREES - 1 PER 20 TO 30 L.F. = 27 TO 40
 PROPOSED: 30 TREES TOTAL
 REQUIRED SHRUBS - 1 PER 4 L.F. = 200
 PROPOSED: 200 SHRUBS TOTAL

PERIMETER AREA: 690 L.F.
 REQUIRED TREES - 1 PER 20 L.F. = 45
 PROPOSED: 170 TREES TOTAL
 PARKING AREA STALLS: 177 TOTAL
 REQUIRED PLANTING AREA: 20 S.F.
 PER STALL = 3,540 S.F.
 PROPOSED: 4,063 S.F. TOTAL

PARKING
 REQUIRED PER TMC TABLE 18-5 TOD NEIGHBORHOOD PARKING REQUIREMENTS
 HOTELS:
 AUTOMOBILE PARKING - 1 PER GUESTROOM
 BICYCLE PARKING (PER FIGURE 18-7) - 1 PER 50 PARKING STALLS, MINIMUM 2 STALLS

TOTAL GUESTROOMS: 177
 REQUIRED GUEST PARKING 177 STALLS
 TOTAL REQUIRED STALLS: 177 STALLS

TOTAL REQUIRED BICYCLE STALLS: 177 / 50 = 3.54. 4 BICYCLE STALLS REQUIRED.

PROVIDED STALLS:
 STANDARD: 124 (70%)
 14 ACCESSIBLE VEHICLE STALLS
 3 ACCESSIBLE VAN STALL
 4 EV CHARGING STALLS (FUTURE)
 COMPACT SPACES: 53 (30%)
 TOTAL PROVIDED STALLS: 177

ACCESSIBLE PARKING (2015 WSBC SECTION 1106.2)
 IN GROUP R-1 OCCUPANCIES ACCESSIBLE PARKING SHALL BE PROVIDED IN ACCORDANCE WITH TABLE 1106.1.
 151 TO 200 SPACES = 6 REQUIRED ACCESSIBLE PARKING SPACES
 WHERE AT LEAST ONE PARKING SPACE IS PROVIDED FOR EACH SLEEPING UNIT, AT LEAST ONE ACCESSIBLE PARKING SPACE SHALL BE PROVIDED FOR EACH ACCESSIBLE UNIT.
 151 TO 200 GUESTROOMS = 8 REQUIRED ACCESSIBLE UNITS.
 TOTAL REQUIRED ACCESSIBLE PARKING = 6 + 8 = 14 TOTAL STALLS, INCLUDING (3) VAN STALLS

TOTAL PROVIDED BICYCLE STALLS: 9 BICYCLE STALLS PROVIDED - SEE LANDSCAPE DRAWINGS

FLOOR AREA AND GUESTROOMS:

LVL 5	22,669	(41)
LVL 4	22,669	(41)
LVL 3	22,669	(41)
LVL 2	22,669	(38)
LVL 1	25,989	(11)
TOTAL:	116,665 SF	(177)

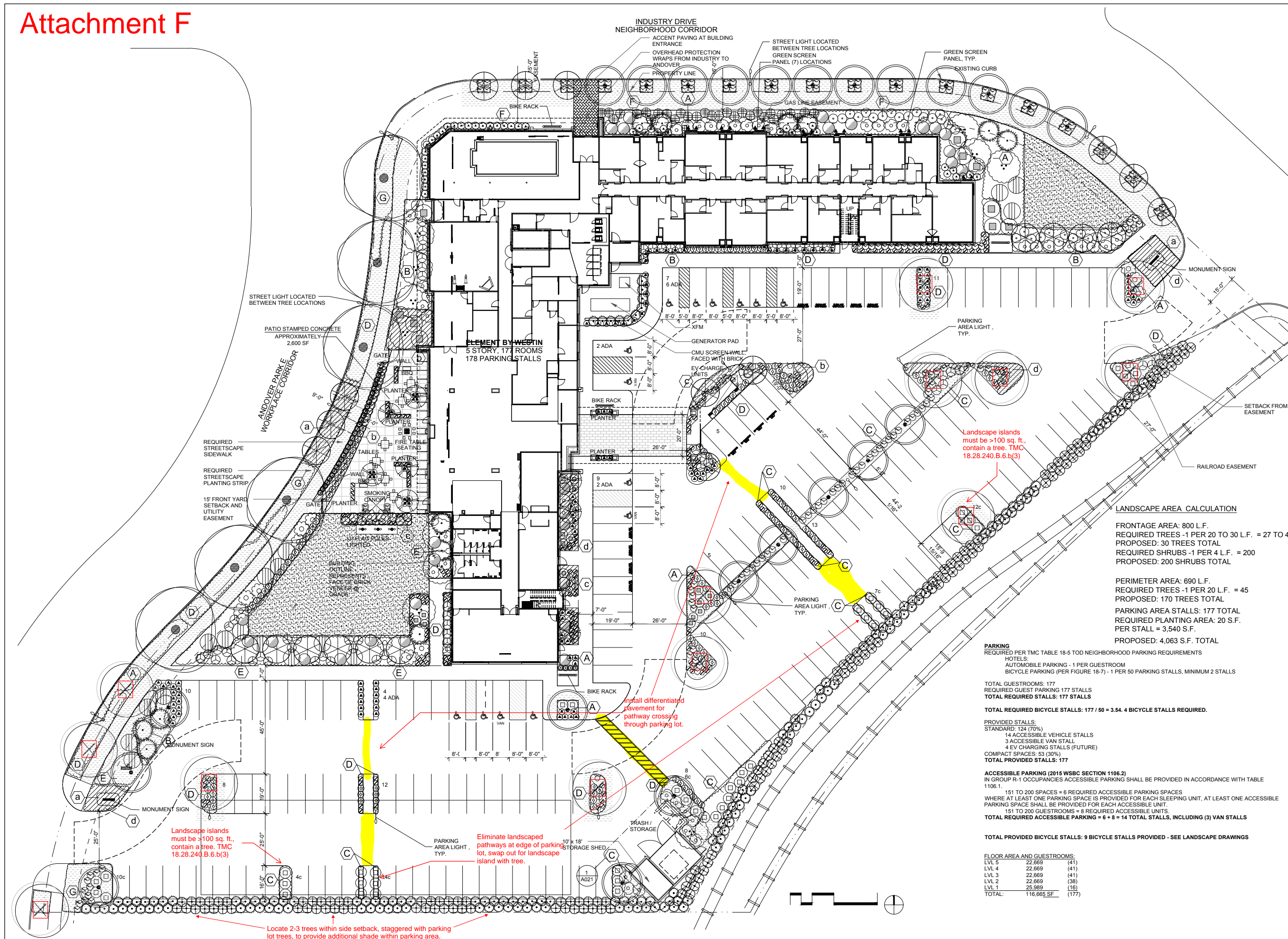


DATE: 2-28-2018
 LAST UPDATE:
 CAD FILE:
 DRAWING TITLE

PLANTING PLAN

SHEET NUMBER
L1.0

Attachment F



JGM
LANDSCAPE ARCHITECTS
 INCORPORATED P.S.
 LANDSCAPE ARCHITECTURE
 URBAN DESIGN
 SITE PLANNING
 PARKS AND RECREATION PLANNING
 12610 NE 104TH ST.
 KIRKLAND WA 98033
 PH: 425.454.5723
 FX: 425.822.3525
 E: jgm@jgm-inc.com

ELEMENT BY WESTIN
 515 INDUSTRY DRIVE
 TUKWILA, WA 98188

FOR:

REVISIONS/DRAWING ISSUES:
 8-14-2018

Drawn by:
 Checked by: CL

LANDSCAPE AREA CALCULATION

FRONTAGE AREA: 800 L.F.
 REQUIRED TREES - 1 PER 20 TO 30 L.F. = 27 TO 40
 PROPOSED: 30 TREES TOTAL
 REQUIRED SHRUBS - 1 PER 4 L.F. = 200
 PROPOSED: 200 SHRUBS TOTAL

PERIMETER AREA: 690 L.F.
 REQUIRED TREES - 1 PER 20 L.F. = 45
 PROPOSED: 170 TREES TOTAL

PARKING AREA STALLS: 177 TOTAL
 REQUIRED PLANTING AREA: 20 S.F.
 PER STALL = 3,540 S.F.
 PROPOSED: 4,063 S.F. TOTAL

PARKING
 REQUIRED PER TMC TABLE 18-5 TOD NEIGHBORHOOD PARKING REQUIREMENTS
 HOTELS:
 AUTOMOBILE PARKING - 1 PER GUESTROOM
 BICYCLE PARKING (PER FIGURE 18-7) - 1 PER 50 PARKING STALLS, MINIMUM 2 STALLS

TOTAL GUESTROOMS: 177
 REQUIRED GUEST PARKING 177 STALLS
 TOTAL REQUIRED STALLS: 177 STALLS

TOTAL REQUIRED BICYCLE STALLS: 177 / 50 = 3.54. 4 BICYCLE STALLS REQUIRED.

PROVIDED STALLS:
 STANDARD: 124 (70%)
 14 ACCESSIBLE VEHICLE STALLS
 3 ACCESSIBLE VAN STALL
 4 EV CHARGING STALLS (FUTURE)
 COMPACT SPACES: 53 (30%)
 TOTAL PROVIDED STALLS: 177

ACCESSIBLE PARKING (2015 WSBC SECTION 1106.2)
 IN GROUP R-1 OCCUPANCIES ACCESSIBLE PARKING SHALL BE PROVIDED IN ACCORDANCE WITH TABLE 1106.1.
 151 TO 200 SPACES = 6 REQUIRED ACCESSIBLE PARKING SPACES
 WHERE AT LEAST ONE PARKING SPACE IS PROVIDED FOR EACH SLEEPING UNIT, AT LEAST ONE ACCESSIBLE PARKING SPACE SHALL BE PROVIDED FOR EACH ACCESSIBLE UNIT.
 151 TO 200 GUESTROOMS = 8 REQUIRED ACCESSIBLE UNITS.
 TOTAL REQUIRED ACCESSIBLE PARKING = 6 + 8 = 14 TOTAL STALLS, INCLUDING (3) VAN STALLS

TOTAL PROVIDED BICYCLE STALLS: 9 BICYCLE STALLS PROVIDED - SEE LANDSCAPE DRAWINGS

FLOOR AREA AND GUESTROOMS:

LVL 5	22,669	(41)
LVL 4	22,669	(41)
LVL 3	22,669	(41)
LVL 2	22,669	(38)
LVL 1	25,989	(118)
TOTAL:	116,665 SF	(177)



STATE OF WASHINGTON
 REGISTERED
 LANDSCAPE ARCHITECT
 Liang H. Wu
 CERTIFICATE NO. 442

DATE: 2-28-2018
 LAST UPDATE:
 CAD FILE:
 DRAWING TITLE

PLANTING PLAN

SHEET NUMBER
L1.0