



INFORMATIONAL MEMORANDUM

TO: Transportation and Infrastructure Committee
FROM: Henry Hash, Public Works Director *H.H.*
BY: Cyndy Knighton, Senior Program Manager
CC: Mayor Ekberg
DATE: October 5, 2018
SUBJECT: South 140th Street Intersection Improvements
Project No. 91610405

ISSUE

Update the Transportation and Infrastructure Committee on the pedestrian crossing needs on Tukwila International Boulevard (TIB) near the Abu Bakr Islamic Center.

BACKGROUND

In 2015, a pedestrian crossing evaluation study was completed which studied the need for improved pedestrian crossings on TIB between S 140th St and S 144th St. The study concluded that there was a need for a pedestrian crossing at the Islamic Center, near S 141st St.

DISCUSSION

Recent discussions on the need for a safe pedestrian crossing near the Islamic Center have resulted in direction to staff to pursue grant funding for design and construction of a new Rectangular Rapid Flashing Beacon (RRFB) on TIB. Staff submitted a grant application on August 17, 2018 to the Transportation Improvement Board, requesting \$150,864 of Sidewalk Funding with a 20% City match amount of \$37,716. The grant applications are currently being reviewed and ranked by the Transportation Improvement Board and awards will be decided in November 2018.

Interim measures are being considered while awaiting funding for the RRFB. Staff has met with representatives from the Islamic Center on-site last week to discuss the needs and patterns of those travelling to and from the mosque. Additionally, staff has begun working with KPG to identify potential interim measures that could be taken.

During Eid, an Islamic celebration, Tukwila Police provide support to the Islamic Center, directing the increased pedestrian and vehicular traffic. Hiring off-duty police officers to provide similar service is frequently used by large churches and other organizations during regular peak events. Education and outreach would need to occur to direct the pedestrians to whatever treatment is implemented, especially due to the large number of locations where pedestrians have been seen crossing TIB.

FINANCIAL IMPACT

The financial impact for interim measures is not yet known. Staff will update the Committee with cost estimates in the near future once they are developed.

RECOMMENDATION

Staff recommends working with KPG to identify possibilities of interim measures and that this be discussed by the Transportation and Infrastructure Committee and referred to the Committee of the Whole for discussion and direction on the same night.

ATTACHMENT

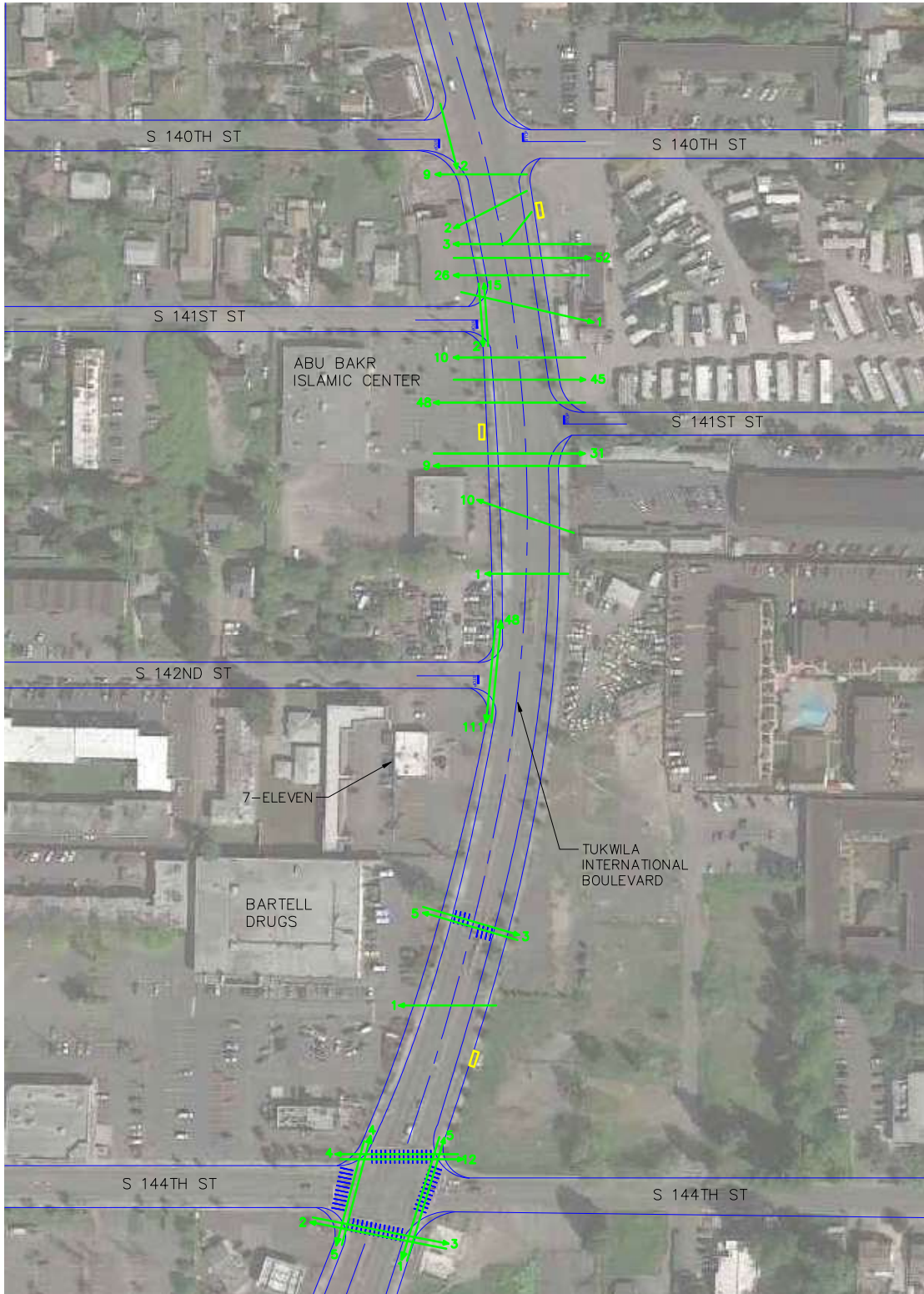
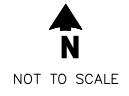
- Maps Showing Pedestrian Crossing Counts

Friday

Legend

- Pedestrians
- Bus Stop

Date - 08/14/2015
Time Period - 1:30pm-2:30pm



Tukwila Spaghetti Diagram Peak Hour Flow (1:30pm - 2:30pm)

FIGURE

1

Tukwila ADA Transition Plan

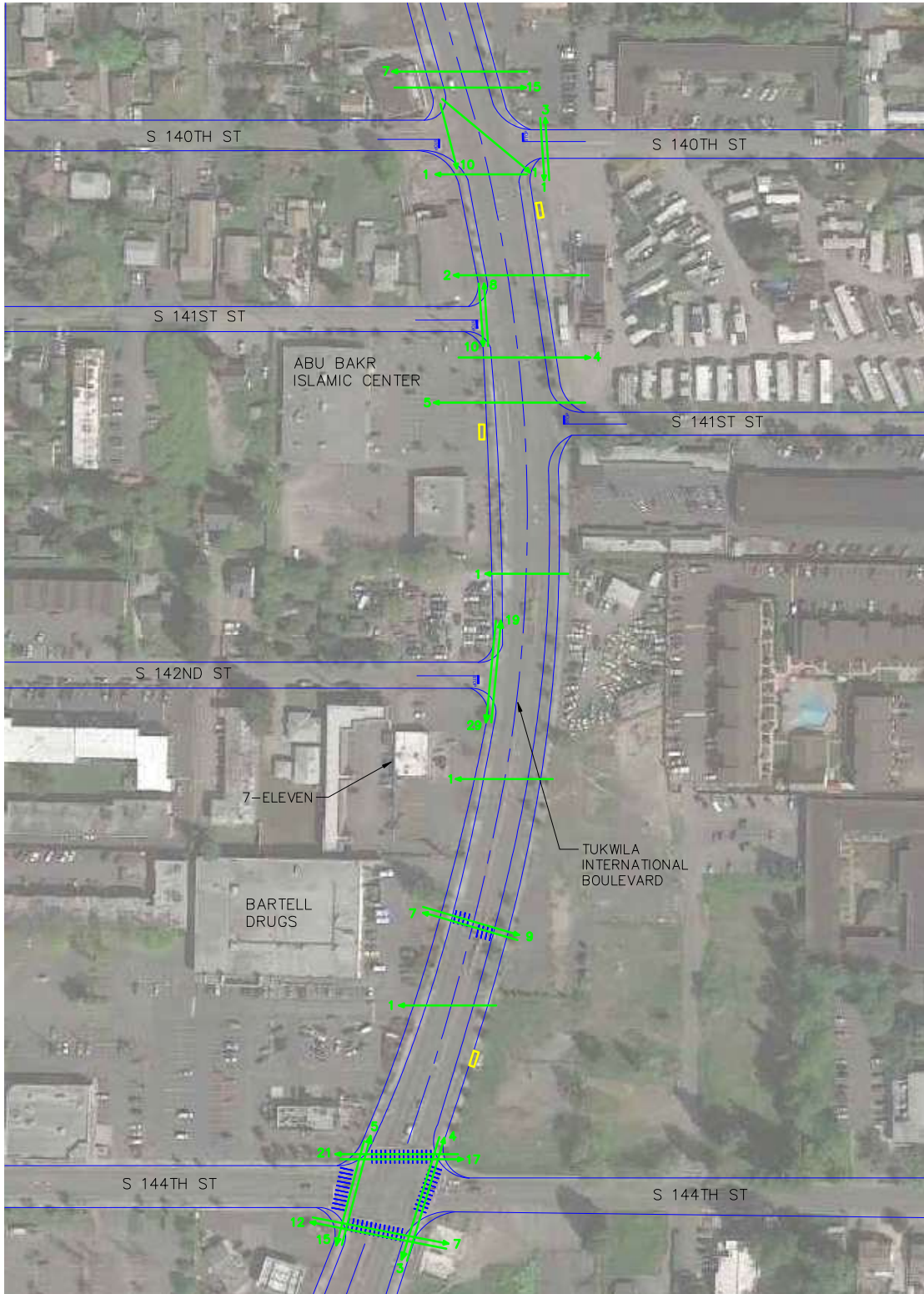
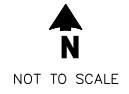


Tuesday

Legend

- Pedestrians
- Bus Stop

Date - 08/25/2015
Time Period - 5:00pm-6:00pm



Tukwila Spaghetti Diagram Peak Hour Flow (5:00 - 6:00pm)

Tukwila ADA Transition Plan



FIGURE

2

3