



INFORMATIONAL MEMORANDUM

TO: Community Development & Neighborhoods Committee

FROM: Rick Still, Parks & Recreation Director

By: Robert Eaton, Parks & Recreation Manager

CC: Mayor Ekberg

DATE: October 22, 2019

SUBJECT: Safety in Parks

ISSUE

Council request to discuss safety in parks at Council Committee

BACKGROUND

At the August 5, 2019 Regular Meeting, a resident gave public comment regarding concerns with safety in and around Cascade View Community Park. A week prior to that, on July 29, 2019, another park neighbor communicated with Councilmember Robertson and Mayor Ekberg regarding her concerns with safety in Crystal Springs Park. In response to these concerns, at the August 5, 2019 Regular Meeting, Council asked that staff bring this topic of safety in parks forward to a future council committee meeting for discussion.

DISCUSSION

Safety in parks is more than a parks maintenance or increased patrols issue, rather, a larger challenge to be looked at on a holistic view, utilizing multiple city departments and resources to adequately address. In Tukwila, our Parks and Police Departments work closely to address various challenges and hot spots as they arise in parks. There are two significant challenges staff face to sufficiently address safety in parks, limited resources (budget and staff capacity) and limited enforceability. Staff are doing a great job working within those limitations; however, the challenge continues to require more attention. Staff from Parks and Police will be present to help facilitate discussion with the Council Committee. Technology and Information Services (TIS) will also attend as a resource for discussion regarding security cameras.

FINANCIAL IMPACT

No financial impact at this time. If specific options to address safety in parks are implemented, they would have a cost associated with them.

RECOMMENDATION

Discussion only

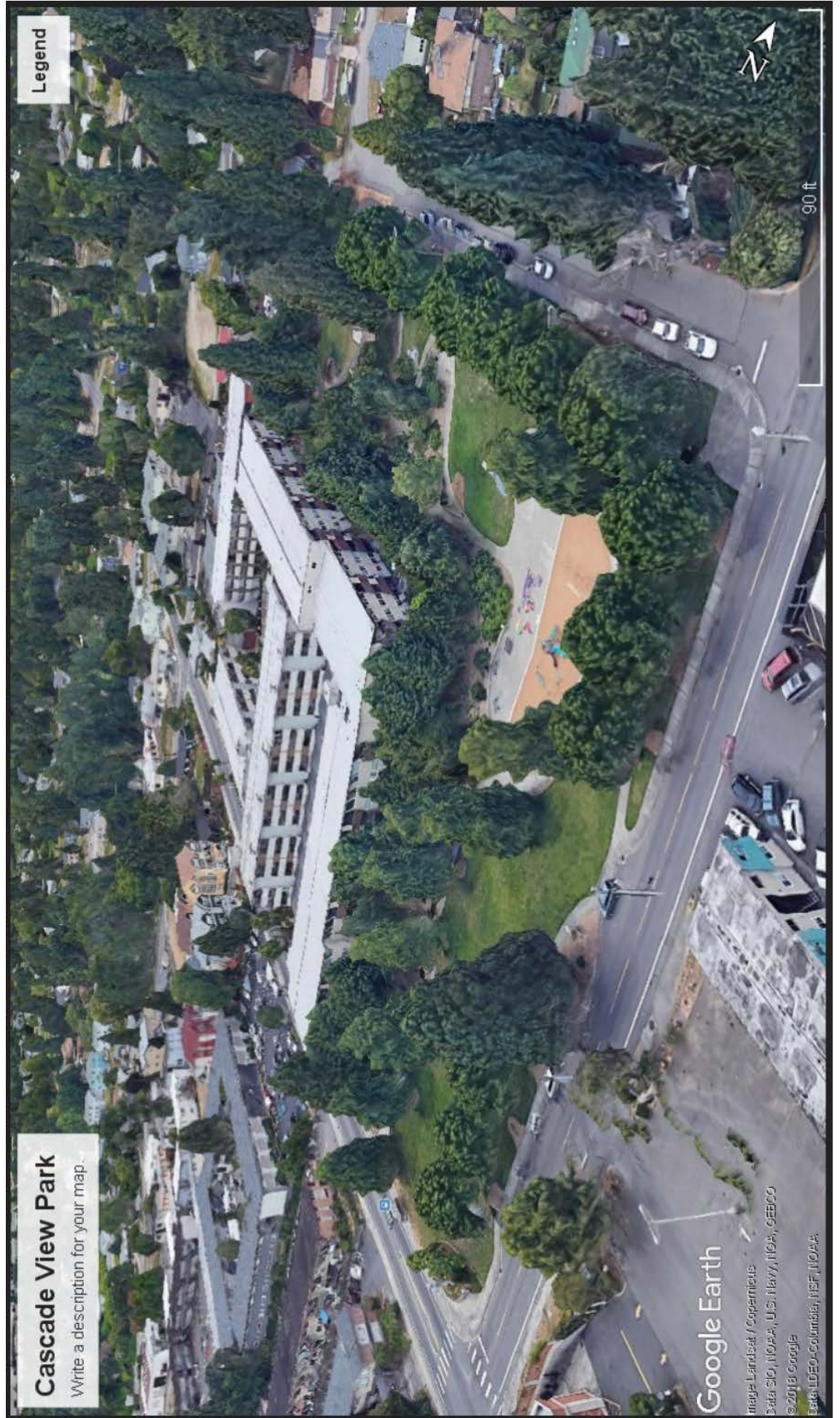
ATTACHMENTS

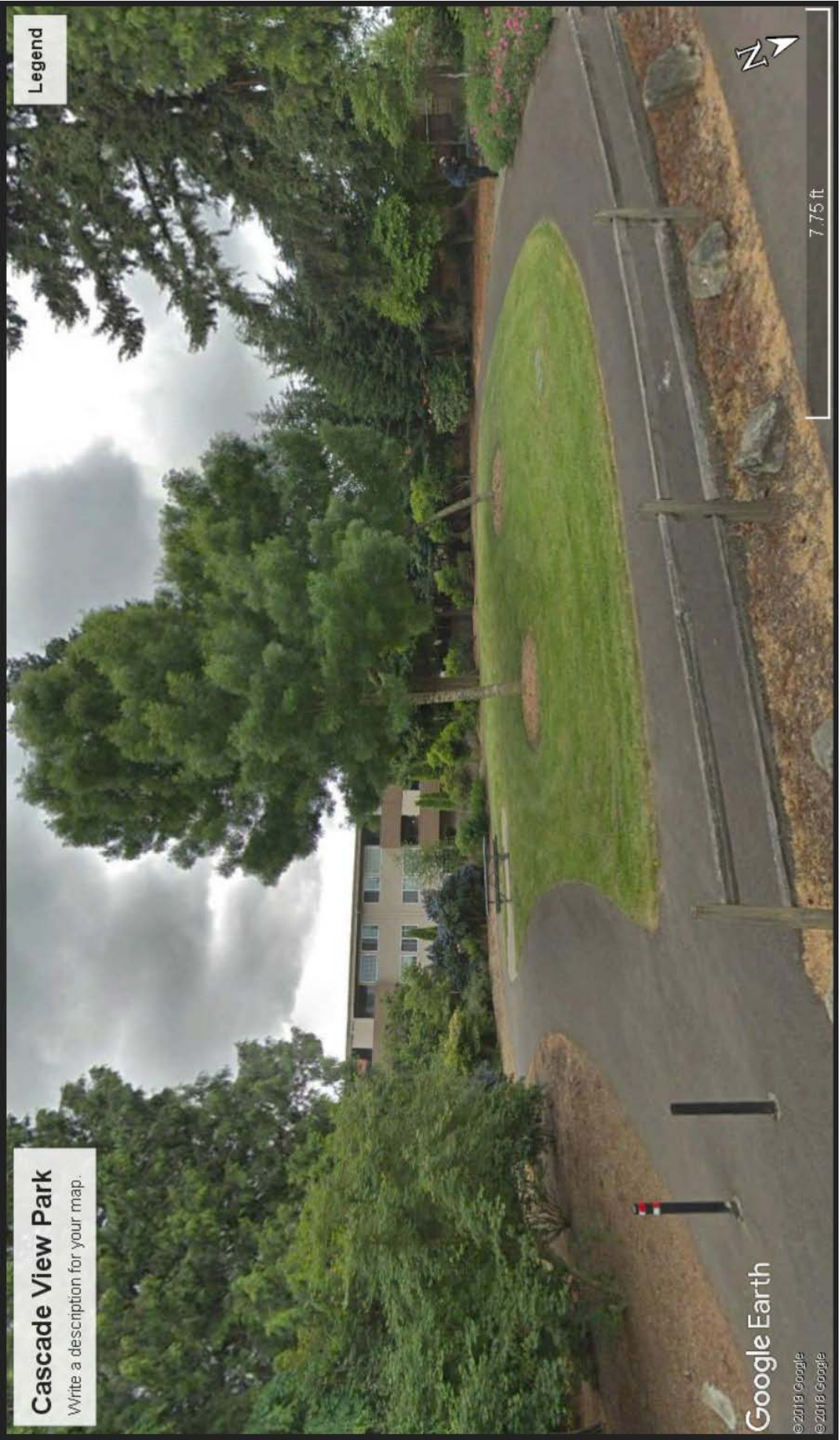
- A. Aerial Map of Cascade View Community Park
- B. Aerial Map of Crystal Springs Park

Cascade View Community Park

Includes new swing area and highlighted section of the upper corner.







Cascade View Park
Write a description for your map.

Legend

Google Earth
© 2018 Google
© 2018 Google

7.75 ft

Crystal Springs Park

