



**TUKWILA**  
PARKS & RECREATION  
GOOD HEALTHY FUN



# *Foster Golf Links*

Operational Plan Overview





**TUKWILA**  
**PARKS & RECREATION**  
 GOOD HEALTHY FUN



### **About Foster Golf Links:**

Foster Golf Links (FGL) is an 18-hole PGA rated golf course owned and operated by the City that encompasses nearly 77 acres of green space and includes a pro shop, restaurant and banquet space, and maintenance facility. FGL provides a quality golfing experience for those that live, work, and play in Tukwila.

The golf course is operated as an enterprise fund with revenues covering maintenance, pro shop services, and capital costs. This division of the Tukwila Parks & Recreation Department includes skilled and trained staff that works in the pro shop and golf maintenance to provide customer service, manage play, and maintain the course and equipment.





**TUKWILA**  
**PARKS & RECREATION**  
GOOD HEALTHY FUN



### Foster Golf Links: A Century of Play

- In 1853 early settler, Joseph Foster, staked his claim and homesteaded on the land that now includes Foster Golf Links. Schools, streets, and Foster Golf Links are all named for Joseph Foster, he was a well-respected leader who served as a Washington territorial legislator and the first superintendent of school.
- In 1924, entrepreneur, golf professional, and course architect, George Eddy purchased acreage from Foster heirs and constructed a nine-hole course. Maple Grove [golf course] opened for play on February 13, 1925. Governor Louis F. Hart hit the first golf ball with 19-year-old caddie, Joseph Alimont, by his side. In 1927, Eddy purchased adjoining land to add another nine holes to the course.
- Joseph Alimont purchased the course in 1951, having had first right of refusal granted to him via the estate of George Eddy. He worked his entire life at the course, starting as a caddie, then moving to groundskeeper, pro-shop operator, manager, and finally owner.
- In 1976 voters approved the purchase of the “historic Foster Golf Course,” a course that opened as the first privately-owned public course west of the Mississippi River. Residents saw the value of owning the course as one that went far beyond those that played golf. News reports stated the potential of owning a property that brings feelings of being close to nature and providing a break from surrounding development was highly attractive.
- In 2004 the City of Tukwila built the Foster Golf Links Clubhouse. It includes the 1,200 square foot pro shop, restaurant, meeting and banquet rooms for up to 220 guests, outdoor patio and pavilion with seating for an additional 220 guests.





**TUKWILA**  
**PARKS & RECREATION**  
 GOOD HEALTHY FUN



## Foster Golf Links: Course Layout

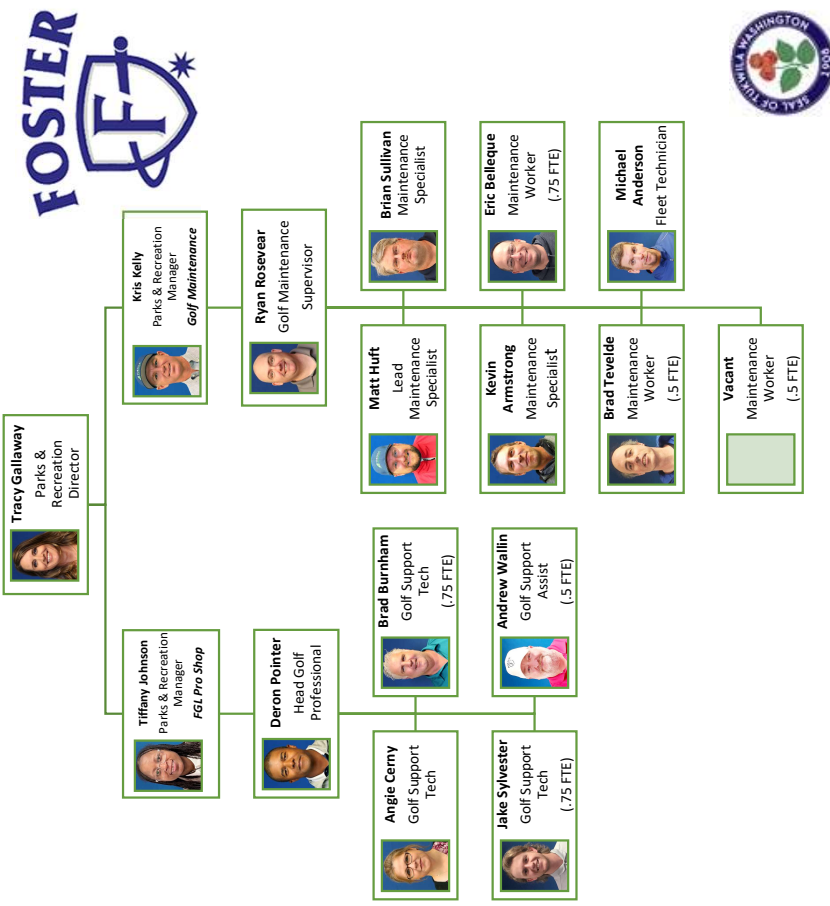
With 18 holes situated along the Duwamish River, players can observe wildlife and enjoy the natural scenery. As players move along the course, they will get the opportunity to shoot across the river on two par 3 holes.



PLEASE NOTE: THE FRONT NINE AND BACK NINE HAVE BEEN REVERSED!

HOLE	1	2	3	4	5	6	7	8	9	OUT	10	11	12	13	14	15	16	17	18	IN	TOT	
Yards	445	155	326	280	248	224	120	220	285	220	253	334	300	295	302	144	420	334	268	124	2511	4694
Handicap	3	17	1	9	11	13	15	5	7	8	10	14	12	6	2	4	16	18				
Men's Par	5	3	4	4	4	3	3	4	3	3	4	4	4	4	3	4	4	4	4	3	34	66
Women's Par	4	3	3	3	3	3	3	3	3	3	3	3	3	3	3	3	3	3	3	3	30	60
Handicap	1	17	5	9	11	13	15	3	7	6	10	14	12	8	2	4	16	18				
Women's Par	5	3	4	5	4	4	4	3	4	4	4	4	4	4	4	4	4	4	4	3	35	70





**Operational Hours & Staffing**

The golf course is open 7 days a week from dawn to dusk (excluding Christmas Day and New Years day).

There are 13 staff dedicated to Pro Shop and Maintenance Operations at Foster Golf Links. Administrative support is provided by P&R Department admin staff.

During the peak season, April through September (78% of our business) some regular staff work increased hours (and do not work during the “off” season). Additional seasonal staff are hired to assist with operations as well.



**TUKWILA**  
PARKS & RECREATION  
GOOD HEALTHY FUN



### Foster Golf Links: Community Outcomes

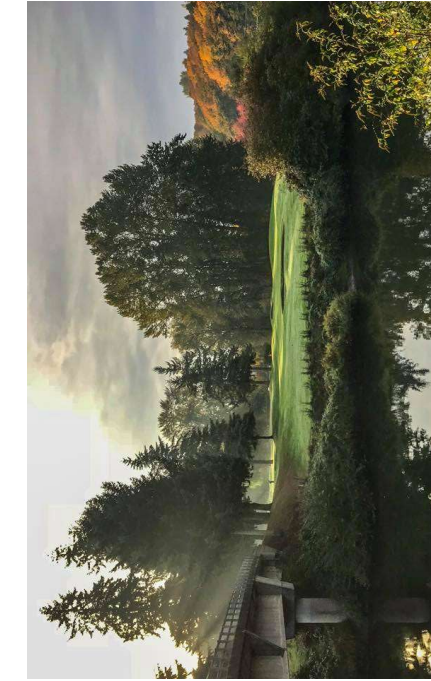


- Adds to the high quality of recreational life for residents and is an attractor for business and visitors
- Community has access to high-quality, well-maintained facility that offers a variety of programs
- Preserves nearly 80 acres of urban green space as a major community asset
- Provides the community with a high-quality locally owned restaurant partner





## Foster Golf Links: Environmental Benefits



- Preserve the natural area in an urban environment which provides improved air quality and a lower heat index for the surrounding residential areas.
- More supportive of pollinators than residential and industrial areas.
- Supports university research on riparian wildlife studies and provides an access point to the Green-Duwamish river for the USGS to conduct hydrologic studies.
- Home to wildlife such as, river otters, coyotes, raccoons, eagles, rabbits, and waterfowl.
- Lower cost per acre to maintain than a city park.
- Supports native plant species and riparian restoration.





## Foster Golf Links: Key Activities & Services

- Concessionaire
- Golf Play
- Merchandise
- Player Development
  - Foster HS Golf Team
- Rental Services
- Tournaments & Events



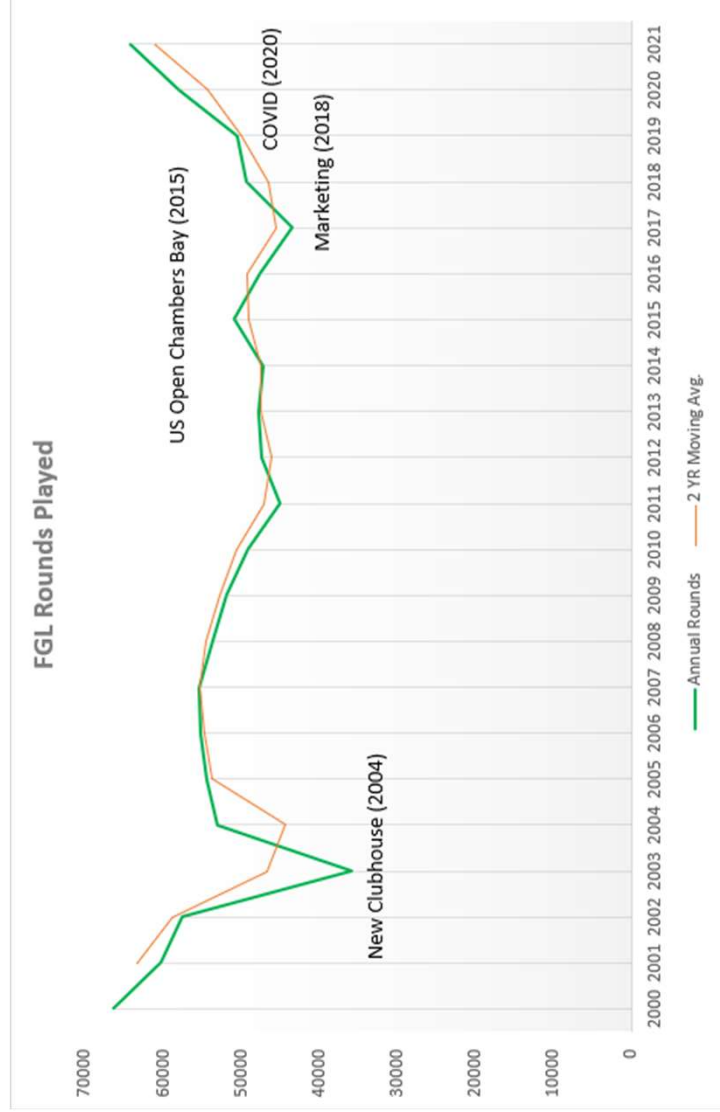




**TUKWILA**  
PARKS & RECREATION  
GOOD HEALTHY FUN



**2021 rounds played were 64,200, just under the recorded high in 2000 of 66,317.**





### **Foster Golf Links: A Century of Play**



According to records kept since the City of Tukwila took full operations on in 1990, a total of 1,867,038 rounds of golf were played on the course through 2021.

Historical records have not been located to determine the exact number of rounds that were played on the course since operations first started, however it is easy to assume that more than three million people have walked the course.





**TUKWILA**  
**PARKS & RECREATION**  
 GOOD HEALTHY FUN



## Foster Golf Links: an economic engine for the city

Unprecedented growth during the pandemic.

- While many City services were paused and had limited service, Foster Golf Links thrived and grew.
- Average Rounds Played
  - 2000 – 2021: 52,019
  - 2012 – 2016: 48,204
  - 2017 – 2021: 53,143

### FGL FY21 Condensed Income Statement

<b>Revenues:</b>	
Operating	2,191,217
Non-Operating	77,691
Transfers-In	300,000
<b>Total Revenues</b>	<b>2,568,908</b>
<b>Expenses:</b>	
Operating	1,732,005
Capital	234,871
Transfers-Out	207,298
<b>Total Expenses</b>	<b>2,174,174</b>
<b>Net Income</b>	<b>394,734</b>





**TUKWILA**  
**PARKS & RECREATION**  
 GOOD HEALTHY FUN



**2021 FGL General Fund Investment**

GF Transfer-In	300,000
Less:	
Indirect Cost Allocation	206,798
Pro-Shop Sales Tax	21,849
Restaurant Sales Tax (Est.)	10,443
Surface Water Expense	39,306
<b>Net Inflow (Outflow)</b>	<b>(21,604)</b>

FGL by itself returns nearly every dollar in General Fund investment via indirect cost payments, sales tax inflows generated, and surface water expenses covered that would otherwise be General Fund expenditures.



**TUKWILA**  
PARKS & RECREATION  
GOOD HEALTHY FUN

**Don't take our word for it...**



*According to the Washington Golf Economy\**

Average spending per golf trip is \$70 per person per day trip, resulting in indirect benefit to the City

- This includes spending on accommodation, local transportation, food and beverage, entertainment, gifts, and so on.
- Green fees and cart fees are not included as they are already captured in the Golf Facility Operations revenues.

\* A report generated on behalf of the Washington State Golf Association, the Pacific Northwest Section of The PGA of America, the Pacific Northwest Golf Association, the Western Washington Golf Course Superintendents Association, and the Evergreen Chapter of the Club Managers Association of America.





**TUKWILA**  
**PARKS & RECREATION**  
GOOD HEALTHY FUN



## Maintenance: Key Services & Activities

- General
- Cart Paths
- Course Accessories
- Equipment
- Irrigation
- Landscape
- Sand Bunkers
- Set Course
- Turf





**TUKWILA**  
PARKS & RECREATION  
GOOD HEALTHY FUN



## Capital Improvements

- Clubhouse Maintenance
- Cart Replacement Program
- Course Improvements
- Fleet





**TUKWILA**  
PARKS & RECREATION  
GOOD HEALTHY FUN



## QUESTIONS

