



INFORMATIONAL MEMORANDUM

TO: **Transportation and Infrastructure Services Committee**
 FROM: **Hari Ponnekanti, Public Works Director/ City Engineer**
 BY: **Catrien de Boer, Public Works Grant Analyst**
 CC: **Mayor McLeod**
 DATE: **April 19, 2024**
 SUBJECT: **2024 Annual Overlay – 50th PI Overlay**
Project No. 80010401
TIB Complete Streets Grant Application

ISSUE

Authorize the submittal of a grant application to the Transportation Improvement Board (TIB) Complete Streets grant program.

BACKGROUND

Every year, Public Works issues a construction project to grind and overlay several blocks of roadways in the City of Tukwila. The annual overlay program is intended to preserve and maintain the street structure in a safe and useable state by resurfacing before failure, which also minimizes costs.

The Annual Overlay program is funded almost exclusively out of the transportation fund (104) as many grant programs do not pay for routine maintenance of our roads.

DISCUSSION

In 2021, the City applied for and was awarded \$400,000 Complete Streets grant to offset the costs of traffic calming elements as part of the 2022 and 2023 Annual Overlay projects. This funding helped pay for sidewalks, illumination, RRFBs, and pavement markings.

For the 2024 Annual Overlay project, Public Works is using the remaining American Rescue Plan Act (ARPA) funds that were allocated to the department for the traffic calming elements of this year’s program.

In March 2024, the City was notified that TIB is accepting early consideration applications for construction-ready Complete Streets projects. The City met with the TIB Engineer and discussed the possibility of using Complete Streets funding to help offset the City contribution for the pavement/overlay components of this project since the traffic calming elements are already accounted for. The City was reassured that this funding could pay for a portion of the overlay, and is encouraged to apply. This funding can only be used for construction expenses, must be obligated by July 1, 2024, and must be spent in 2024.

Grant submissions are due on April 26th, 2024. We will be notified of awards on or around May 17th, 2024.

FISCAL IMPACT

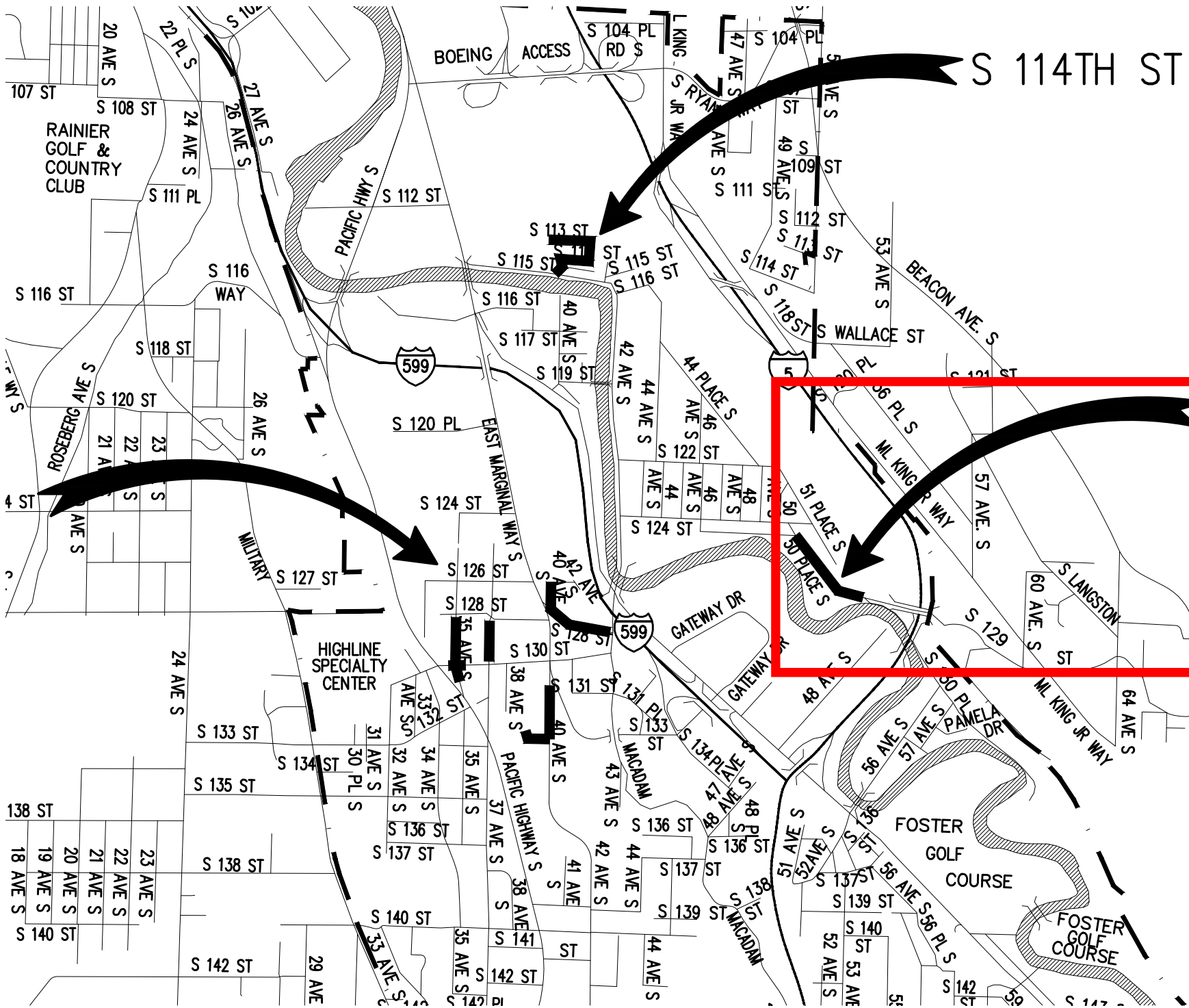
The City is seeking \$400,000 from the TIB Complete Streets program to fund a portion of overlay/pavement for the 2024 Annual Overlay program. This program requires a 20% local city match which will be paid for with the City 104 Fund budget.

	<u>Amount</u>	<u>Program Element</u>
ARPA Allocation	\$112,000	Pedestrian path, ADA ramps, restriping, traffic control devices
Complete Streets Grant	\$400,000	Pavement/Overlay
City Contribution	\$528,012	Pavement/Overlay
Total	\$1,040,012	

RECOMMENDATION

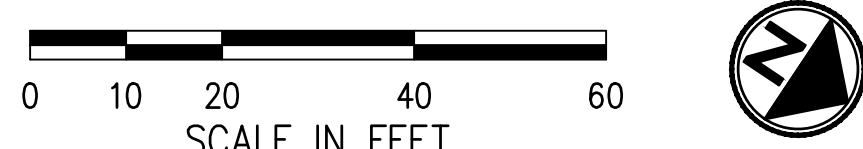
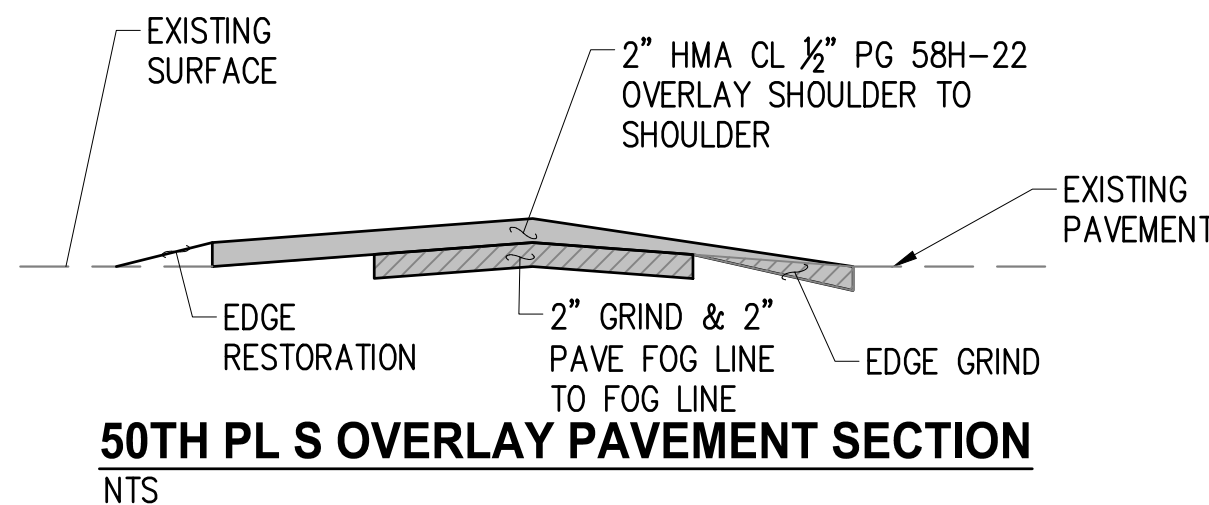
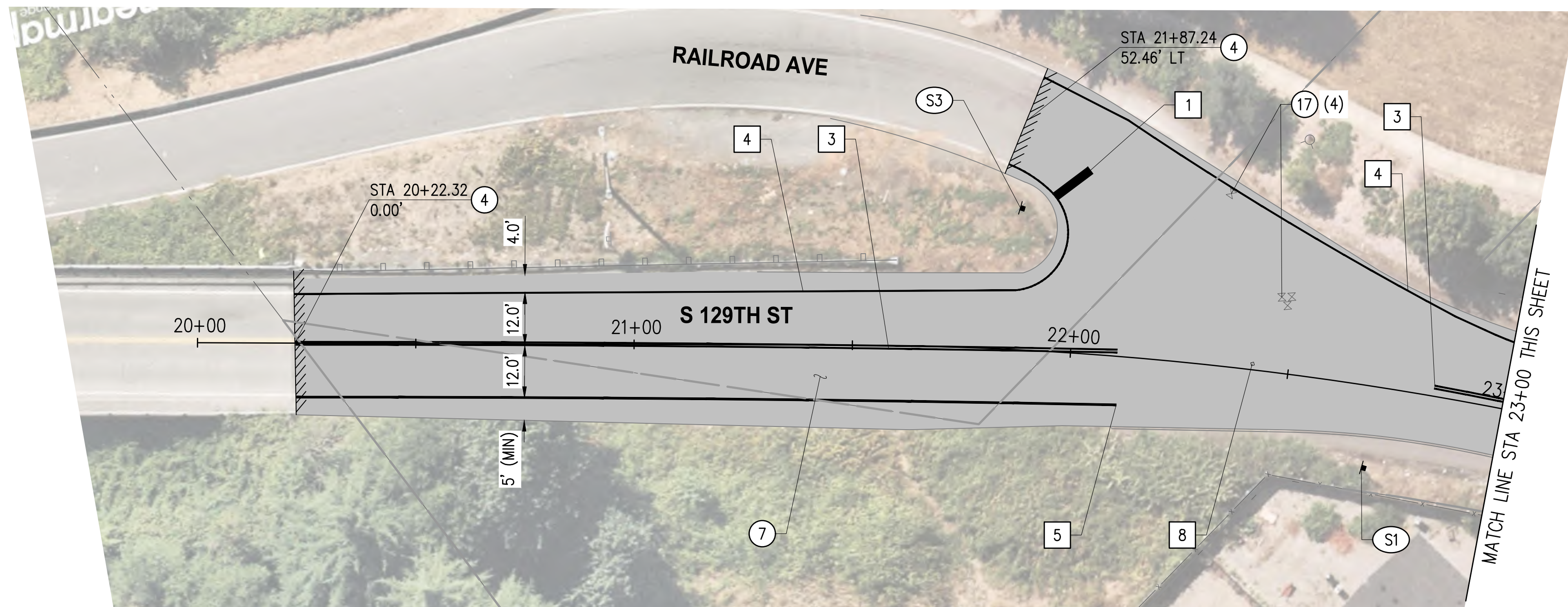
The Committee is being asked to approve the submittal of the Complete Streets grant application for the 2024 Annual Overlay Program.

Attachments: 50th PI Vicinity Map and Site Plans
Pictures of existing conditions



S 114TH ST

50TH PL S



SIGN SCHEDULE					
SIGN NO.	STATION	OFFSET	DESIGNATION	SIZE	REMARKS
S1	22+69.95	18.76' RT	R2-1 "25"	30" x 36"	REMOVE AND REPLACE
S2	25+30.48	17.59' RT	R7-1 "NO PARKING", R7-201P	EXISTING	REMOVE AND REPLACE
S3	21+86.88	32.52' LT	R1-1, "STOP"	30" x 30"	REMOVE AND REPLACE

GENERAL NOTES

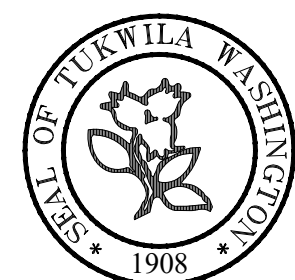
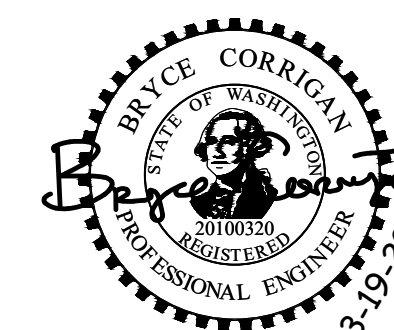
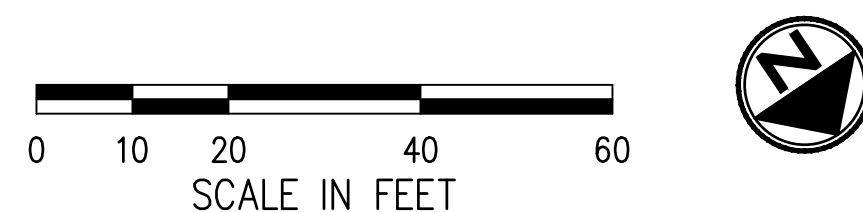
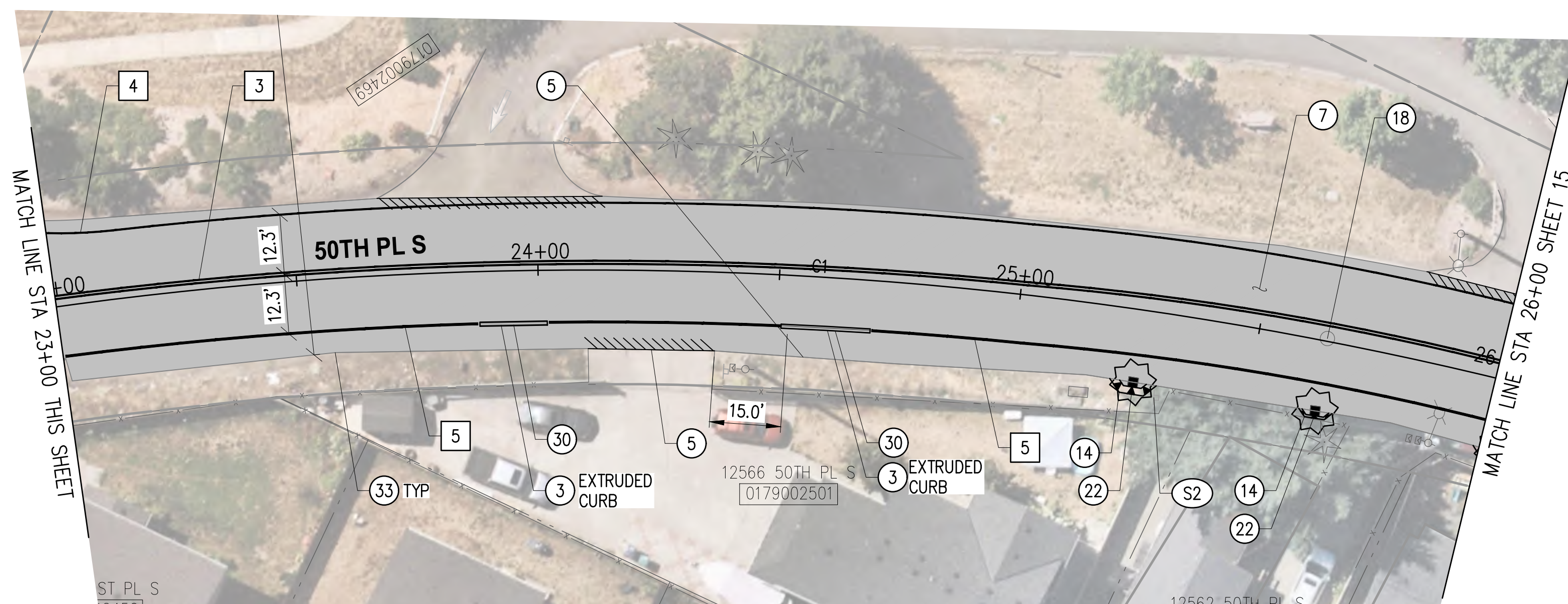
1. THE LOCATION OF FEATURES SHOWN ON THESE PLANS IS APPROXIMATE AND NOT BASED ON TOPOGRAPHICAL SURVEY. CONTRACTOR SHALL FIELD VERIFY EXISTING CONDITIONS PRIOR TO CONSTRUCTION.
2. THE LOCATION OF THE ALIGNMENT IS FOR GENERAL LAYOUT PURPOSES ONLY.
3. PRIOR TO PLANING OPERATION, CONTRACTOR SHALL LOWER ALL UTILITY CASTINGS IN THE ROADWAY.
4. INSTALL STORM DRAIN MARKER AT ALL CATCH BASIN INLETS ADJACENT TO AND WITHIN PROJECT LIMITS. FOR PLACEMENT, SEE DETAIL, SHEET 2.
5. CONTRACTOR SHALL IDENTIFY AND MARK IN FIELD ALL OVERLAY AND PAVEMENT REPAIR LIMITS FOR CONTRACTING AGENCY AND ENGINEER OF RECORD FOR APPROVAL PRIOR TO SAWCUTTING, PLANING, AND/OR EXCAVATION.
6. CONTRACTOR SHALL IDENTIFY, MEASURE, RECORD AND MARK IN THE FIELD EXISTING CHANNELIZATION IN ORDER TO INSTALL PROPOSED CHANNELIZATION TO MATCH EXISTING LAYOUT.
7. CONTRACTOR SHALL IDENTIFY, MEASURE, AND MARK PAVEMENT REPAIR AREA IN THE FIELD WITH THE ENGINEER PRIOR TO APPROVAL.
8. EXISTING SIGNS NOT DESIGNATED FOR REMOVAL SHALL BE PROTECTED. NEW SIGNS SHALL BE INSTALLED PER COT STD DETAIL RS-23A AND RS-23B.
9. CONTRACTOR SHALL PROTECT ALL EXISTING ITEMS WITHIN AND OUTSIDE OF PROJECT LIMITS.

CONSTRUCTION NOTES

- (3) REMOVE.
- (4) GRIND AND PAVE LIMITS, SEE BUTT JOINT DETAIL, SHEET 2.
- (5) EDGE PLANING, SEE DETAIL, SHEET 2.
- (7) ROADWAY OVERLAY SECTION, SEE PAVEMENT SECTION, THIS SHEET.
- (14) INSTALL HMA STORM DRAIN APRON PER DETAIL, SHEET 2.
- (17) ADJUST UTILITY VALVE TO GRADE PER COT STD DETAIL G-2.
- (18) ADJUST UTILITY MANHOLE TO GRADE PER COT STD DETAIL G-2.
- (22) FURNISH AND INSTALL VANED GRATE PER COT DETAIL DS-11. ADJUST TO FINAL GRADE. INSTALL STORM DRAIN MARKER SEE DETAIL, SHEET 2.
- (30) INSTALL PRECAST EXTRUDED CURB TYPE 6 PER WSDOT STD PLAN F-10.42
- (33) EDGE RESTORATION PER DETAIL, SHEET 3.

CHANNELIZATION NOTES

- 1 PLASTIC STOP BAR PER COT STD DETAIL RS-20.
- 3 PAINTED YELLOW DOUBLE CENTERLINE PER WSDOT STD PLAN M-20.10.
- 4 PAINTED WHITE EDGE LINE PER WSDOT STD PLAN M-20.20.
- 5 PAINTED WHITE WIDE EDGE LINE PER WSDOT STD PLAN M-20.10.
- 8 RPM TYPE II BLUE, INSTALL PERPENDICULAR TO HYDRANT AT CENTERLINE.



PUBLIC WORKS DEPT.

*ENGINEERING*STREETS*WATER*SEWER*

by	date
designed	MEF 03/24
drawn	MEF 03/24
checked	BMC 03/24
proj eng	
proj dir	
field bk no	



Seattle
3131 Elliott Avenue, Suite 400
Seattle, WA 98121 206.286.1640
Tacoma | Wenatchee | KPG.com

BID DOCUMENTS

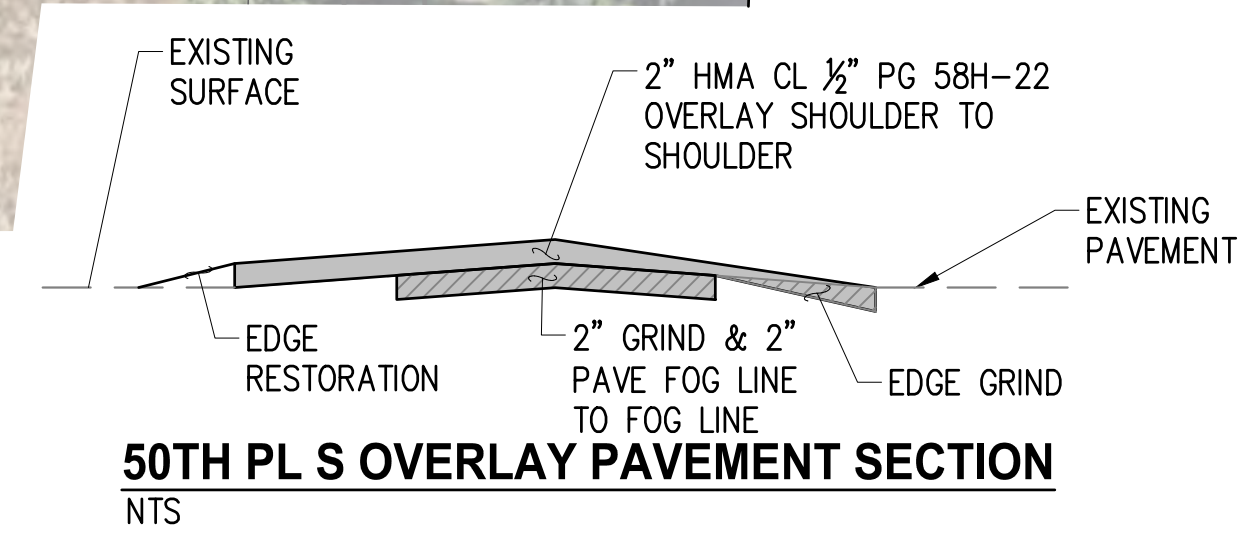
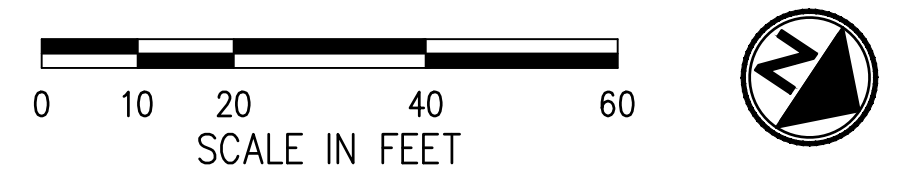
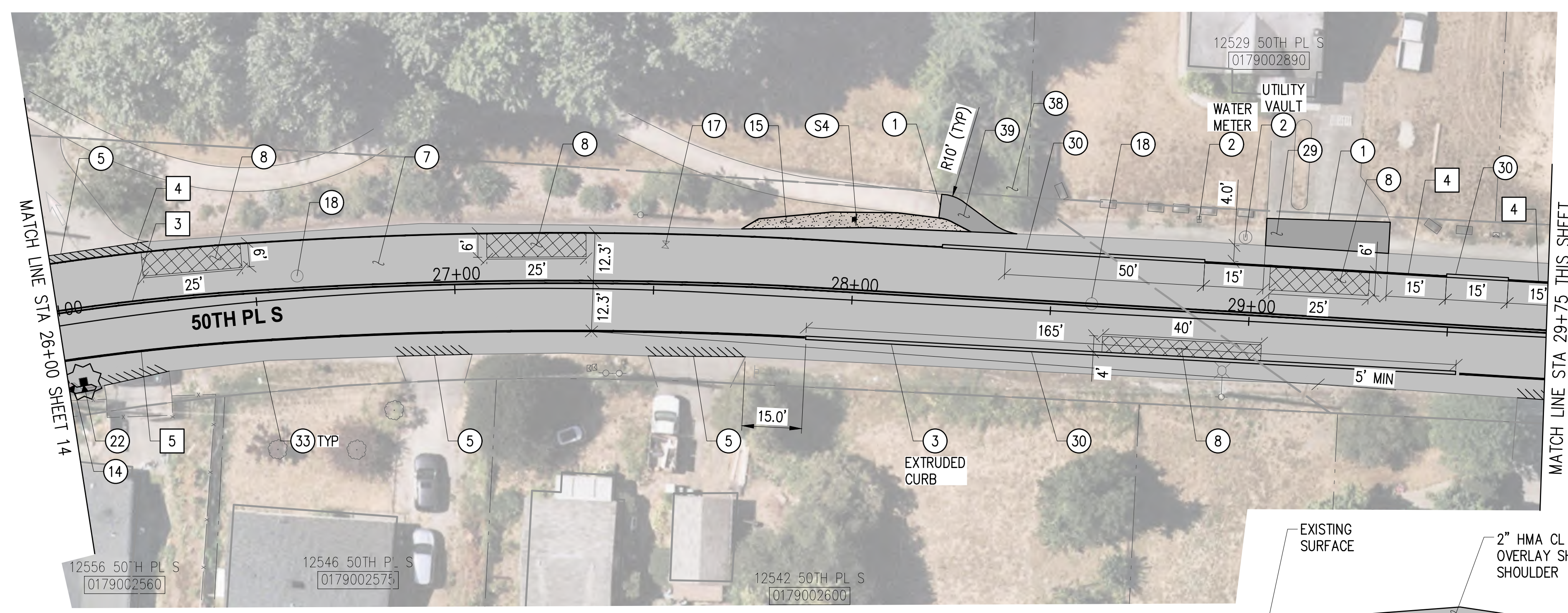
2024 TUKWILA OVERLAY PROGRAM

50TH PL S (STA 20+00 TO STA 26+00)

no	date	revisions

14	
17	
file no	PT040100-50TH PL S-PUN-R01.DWG
scale	1" = 20'
date	03/24

CITY OF TUKWILA



GENERAL NOTES

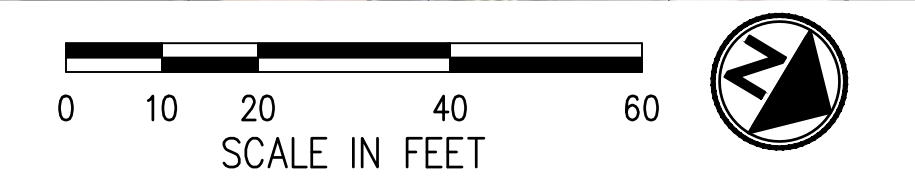
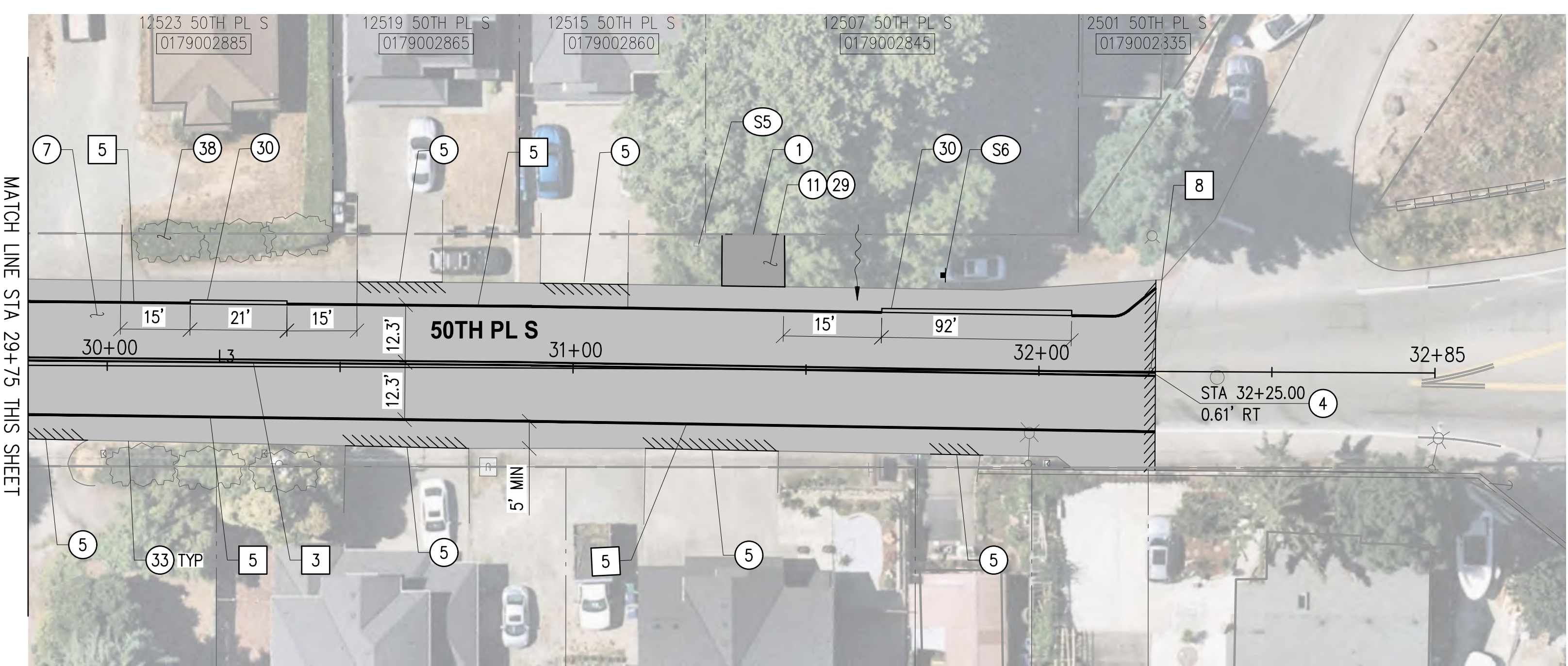
1. THE LOCATION OF FEATURES SHOWN ON THESE PLANS IS APPROXIMATE AND NOT BASED ON TOPOGRAPHICAL SURVEY. CONTRACTOR SHALL FIELD VERIFY EXISTING CONDITIONS PRIOR TO CONSTRUCTION.
2. THE LOCATION OF THE ALIGNMENT IS FOR GENERAL LAYOUT PURPOSES ONLY.
3. PRIOR TO PLANING OPERATION, CONTRACTOR SHALL LOWER ALL UTILITY CASTINGS IN THE ROADWAY.
4. INSTALL STORM DRAIN MARKER AT ALL CATCH BASIN INLETS ADJACENT TO AND WITHIN PROJECT LIMITS. FOR PLACEMENT, SEE DETAIL, SHEET 2.
5. CONTRACTOR SHALL IDENTIFY AND MARK IN FIELD ALL OVERLAY AND PAVEMENT REPAIR LIMITS FOR CONTRACTING AGENCY AND ENGINEER OF RECORD FOR APPROVAL PRIOR TO SAWCUTTING, PLANING, AND/OR EXCAVATION.
6. CONTRACTOR SHALL IDENTIFY, MEASURE, RECORD AND MARK IN THE FIELD EXISTING CHANNELIZATION IN ORDER TO INSTALL PROPOSED CHANNELIZATION TO MATCH EXISTING LAYOUT.
7. CONTRACTOR SHALL IDENTIFY, MEASURE, AND MARK PAVEMENT REPAIR AREA IN THE FIELD WITH THE ENGINEER PRIOR TO APPROVAL.
8. EXISTING SIGNS NOT DESIGNATED FOR REMOVAL SHALL BE PROTECTED. NEW SIGNS SHALL BE INSTALLED PER COT STD DETAIL RS-23A AND RS-23B.
9. CONTRACTOR SHALL PROTECT ALL EXISTING ITEMS WITHIN AND OUTSIDE OF PROJECT LIMITS.

CONSTRUCTION NOTES

- ① MATCH EXISTING.
- ② PROTECT.
- ③ REMOVE.
- ④ GRIND AND PAVE LIMITS, SEE BUTT JOINT DETAIL, SHEET 2.
- ⑤ EDGE PLANING, SEE DETAIL, SHEET 2.
- ⑦ ROADWAY OVERLAY SECTION, SEE PAVEMENT SECTION, THIS SHEET.
- ⑧ PAVEMENT REPAIR SECTION, SEE DETAIL, SHEET 3.
- ⑪ SAWCUT AND REMOVE ASPHALT PAVEMENT AS NEEDED TO INSTALL PROPOSED IMPROVEMENTS.
- ⑭ INSTALL HMA STORM DRAIN APRON PER DETAIL, SHEET 2.
- ⑰ INSTALL GRAVEL SHOULDER, SEE SECTION, SHEET 3.
- ⑱ ADJUST UTILITY VALVE TO GRADE PER COT STD DETAIL G-2.
- ⑳ ADJUST UTILITY MANHOLE TO GRADE PER COT STD DETAIL G-2.
- ㉒ FURNISH AND INSTALL VANED GRATE PER COT DETAIL DS-11. ADJUST TO FINAL GRADE. INSTALL STORM DRAIN MARKER SEE DETAIL, SHEET 2.
- ㉔ INSTALL NEW HMA DRIVEWAY PER PAVEMENT SECTION, SHEET 3.
- ⑳ INSTALL PRECAST EXTRUDED CURB TYPE 6 PER WSDOT STD PLAN F-10.42
- ㉖ EDGE RESTORATION PER DETAIL, SHEET 3.
- ㉘ TRIM VEGETATION AS NEEDED TO INSTALL PROPOSED IMPROVEMENTS.
- ㉚ INSTALL HMA WALKWAY PER DETAIL, SHEET 3.

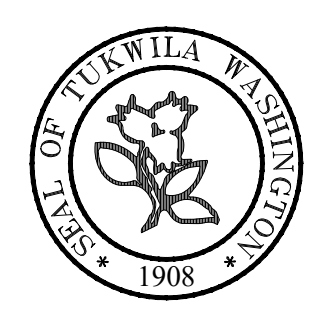
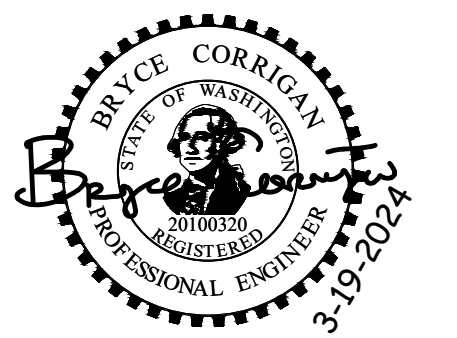
CHANNELIZATION NOTES

- ① PLASTIC STOP BAR PER COT STD DETAIL RS-20.
- ③ PAINTED YELLOW DOUBLE CENTERLINE PER WSDOT STD PLAN M-20.10.
- ④ PAINTED WHITE EDGE LINE PER WSDOT STD PLAN M-20.20.
- ⑤ PAINTED WHITE WIDE EDGE LINE PER WSDOT STD PLAN M-20.10.



50TH PL S								
NUMBER	START STA	NORTHING	EASTING	LENGTH	BRNG/DELTA	RADIUS	PI STA	TAN
C1	21+49.95	181966.98	1285693.66	616.24'	44°08'06"	800.00'	24+74.27	324.32'
L3	27+66.19	182331.34	1285215.56	518.81'	N 30°37'16" W			

SIGN SCHEDULE					
SIGN NO.	STATION	OFFSET	DESIGNATION	SIZE	REMARKS
S4	28+00.00	20.30' LT	R7-1 "NO PARKING"	12" x 18"	NEW
S5	31+26.84	26.84' LT	R2-1 "SPEED LIMIT 25"	24" x 30"	REMOVE AND REPLACE
S6	31+79.83	20.42' LT	R7-1 "NO PARKING"	12" x 18"	NEW



PUBLIC WORKS DEPT.
*ENGINEERING*STREETS*WATER*SEWER*

by	date
designed MEF	03/24
drawn MEF	03/24
checked BMC	03/24
proj eng	
proj dir	
field bk no	



BID DOCUMENTS

2024 TUKWILA OVERLAY PROGRAM

50TH PL S (STA 26+00 TO STA 30+50)

no	date	revisions

15	
17	
file no	PT040100-50TH PL S-PAN-R01.DWG
scale	1" = 20'
date	03/24

Facing East on 50th Pl towards the S 129th St Bridge (Southern-most project limit by Codiga Park)



In front of Codiga Park facing North



Facing North at the end of existing pedestrian facility on the West side of 50th PI where we will pick up and extend.



Cracking on roadway, missing RPMs, and faded paint on 50th PI facing North



Cracking on roadway, missing RPMs, and faded paint on 50th Pl nearing the S 124th intersection facing North

