



INFORMATIONAL MEMORANDUM

TO: Transportation and Infrastructure Services Committee

FROM: Pete Mayer, Deputy City Administrator/ Interim Public Works Director

BY: Catrien de Boer, Public Works Analyst

CC: Mayor McLeod

DATE: November 22, 2024

**SUBJECT: Accept Three Sound Transit System Access Fund Grants
S 152nd Ped Connection, 42nd Ave Bikeway, and SCB Ped/Bike Upgrades.
Project No. 91710303, 92510401, and 92510405**

ISSUE

Accept three Sound Transit System Access Fund (SAF) Grant Awards to improve access to the TIB Light Rail Station. First, Tukwila was awarded \$510,000 for the design and construction of a pedestrian connection between 152nd St and the TIB Station overflow parking lot. Second, Tukwila was awarded \$350,000 to add a traffic-calmed bikeway along 42nd Ave S. Third, Tukwila was awarded \$390,000 to improve the Southcenter Blvd intersection near the TIB Station. These grants total to \$1,250,000.

BACKGROUND

In February 2024, Sound Transit approached the City with a list of projects aimed at improving connectivity and access to the TIB Light Rail Station. The City and Sound Transit Teams ranked the projects and selected three to move forward with. These are direct investments in the City that were approved by the Sound Transit board on March 28, 2024. City staff believe these are meaningful additions to improve station access and public safety.

DISCUSSION

The first project will develop a pathway connection between the TIB Station overflow parking lot to the existing multi-use path dead-end on S 152nd St. This will include a pathway, marked crossing, lighting, and a retaining wall to allow for this direct connection. The second project will develop a traffic-calmed bikeway along 42nd Ave S between S 150th St and Southcenter Blvd. The third project will improve the existing bike lanes and crosswalks on Southcenter Blvd within a half-mile of TIB Light Rail Station; re-channelize to 11 ft general purpose lanes and add separated bike lanes; and upgrade high-visibility crosswalk markings at the station entrance/intersection.

FISCAL IMPACT

The City has been awarded grants for three different projects. There is no city match associated with these grant awards.

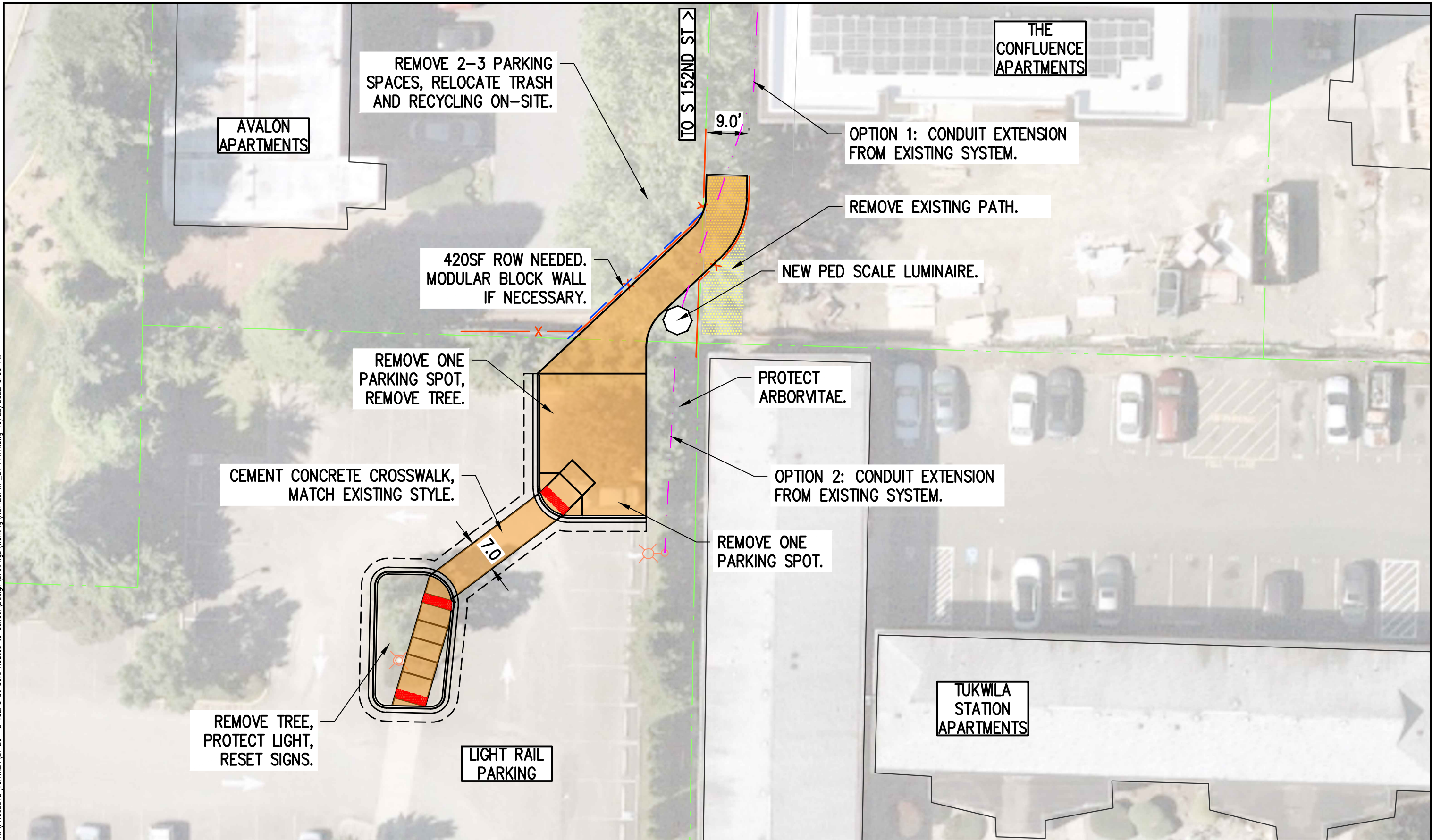
	<u>Award Amount</u>
S 152 nd Ped Connection	\$510,000
42 nd Ave S Bikeway	\$350,000
Southcenter Blvd Intersection Improvements	\$390,000
TOTAL	\$1,250,000

RECOMMENDATION

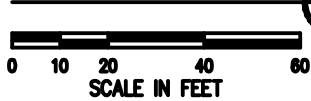
Council is being asked to accept three Sound Transit System Access Fund grant awards and consider this item on the consent agenda on the December 2, 2024 Meeting.

Attachments: Conceptual Designs and Maps

K:\PROJECTS\TUKWILA\21120 - S 152nd St. Safe Routes to School\Design\Drawings\Working\21120PRP_ST_PATH.dwg 10/25/2022 3:03 PM



PLAN



SOUND TRANSIT PATH CONNECTION

CITY OF TUKWILA- TIB LIGHT RAIL STATION



Seattle
 3131 Elliott Avenue, Suite 400
 Seattle, WA 98127-206286.1640
 Tacoma | Wenatchee | KPG.com


Project 10-N13b:

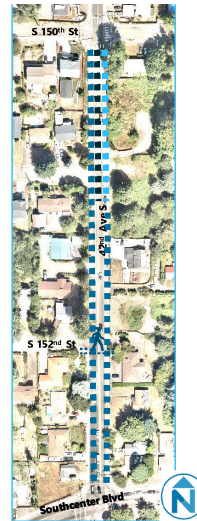
High-cost 42nd Ave S Bikeway

STRIDE ACCESS PROJECTS

Project 10-N13b Tukwila International Boulevard Station

Project Title: High-cost 42nd Ave S Bikeway
Total Cost Estimate: \$350,000

- Bike Lane
- Wide Sidewalk (8')
- Shared Lane Markings
-  Study Location for Ped Crossing



Project Description

Jurisdiction: City of Tukwila

Develop a traffic calmed bikeway along 42nd Ave S between S 150th St and Southcenter Blvd (approx. 950ft). Emulate the character of the bike facility on 42nd Ave S south of Southcenter Blvd. Add striped bike lanes on both sides of the roadway between South Center Blvd and S 151st St. Continue the southbound bike lane on the west side of the street to S 150th St. Between S 151st St and S 150th St widen the sidewalk on the east side of the street to create a shared, widened sidewalk as a low traffic stress option, with an in-lane shared lane marking for more confident bicyclists to remain in the roadway. This intervention requires the removal of on-street parking for one block on the west side of the roadway. At the intersection of S 152nd St study the crossing for a marked crosswalk to connect the new Sound Transit funded sidewalk project to the adjacent bus stop and/or as a school crossing opportunity. The segment of roadway is recommended as a bicycle friendly route with a 30mph speed limit in the City of Tukwila’s Non-motorized Plan. The City of Tukwila supports a multi-use path or bikeway investment on 42nd Ave S.

Cost Estimate

Table 56 Preliminary Cost Estimate for Project 10-N13b High-cost Option

Preliminary Cost Estimate (2023\$)	
Construction Subtotal	\$239,244
Professional Services Subtotal	\$113,163
Grand Total	\$352,407
Rounded Grant Total	\$350,000

Detailed cost estimate can be found in Appendix A

Project Name 10-N13b High-cost 42nd Ave S Bikeway

Project Description Develop a traffic calmed bikeway along 42nd Ave S between S 150th St and Southcenter Blvd (approx. 950ft). Emulate the character of the bike facility on 42nd Ave S south of Southcenter Blvd. Add striped bike lanes on both sides of the roadway between South Center Blvd and S 151st St. Continue the southbound bike lane on the west side of the street to S 150th St. Between S 151st St and S 150th St widen the sidewalk on the east side of the street to create a shared, widened sidewalk as a low traffic stress option, with an in-lane shared lane marking for more confident bicyclists to remain in the roadway. This intervention requires the removal of on-street parking for one block on the west side of the roadway. At the intersection of S 152nd St study the crossing for a marked crosswalk to connect the new Sound Transit funded sidewalk project to the adjacent bus stop and/or as a school crossing opportunity. The segment of roadway is recommended as a bicycle friendly route with a 30mph speed limit in the City of Tukwila's Non-motorized Plan. The City of Tukwila supports a multi-use path or bikeway investment on 42nd Ave S.

Corridor I-405, S1 Line
Station Tukwila International Blvd Station
Jurisdiction Tukwila

Notes and Assumptions Assuming connection to existing storm drainage network

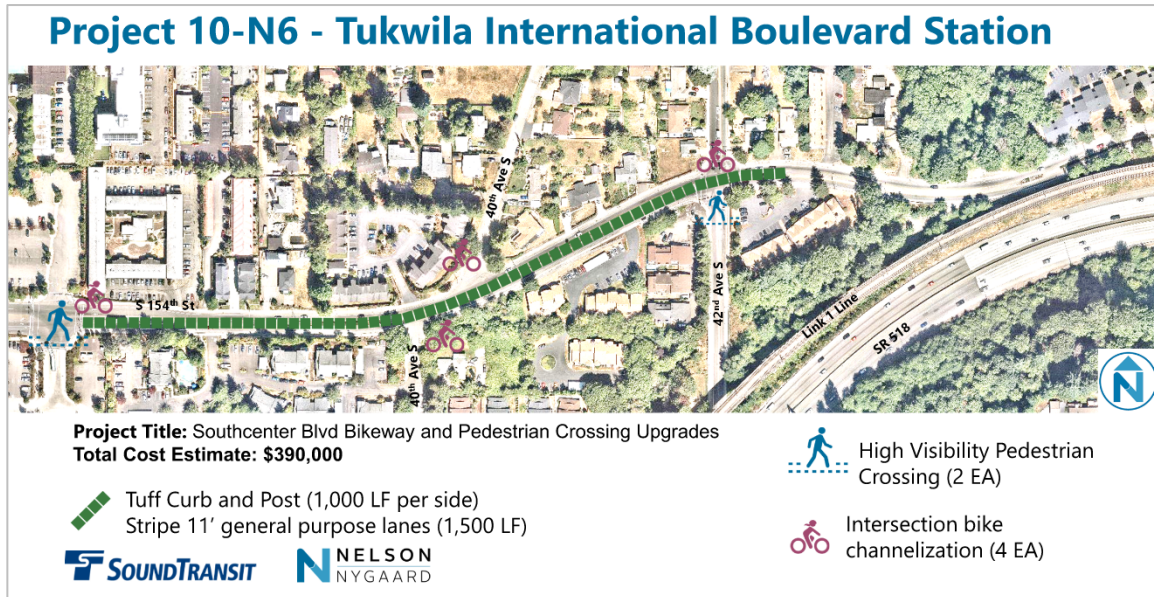
Prepared by NN, MAB
Date 10/10/2023
Checked by CEH
Date 10/19/2023



Description	Unit	Quantity	Unit Cost (2023)	Total Cost	Notes and Assumptions
Percentage Based Allocations					
Demolition	LS	\$126,920	5%	\$6,346	
Site Utilities/Utility Relocation	LS	\$126,920	5%	\$6,346	2 grate inlets converted to curb inlets
Traffic control	LS	\$126,920	10%	\$12,692	
Mobilization	LS	\$126,920	10%	\$12,692	
Pedestrian, Bike Access, and Accommodation, Landscaping					
Concrete Sidewalk	SY	301	\$80	\$24,080	
Curb Ramps	EA	3	\$3,000	\$9,000	
Street Trees	EA	0	\$1,200	\$0	
Asphalt Paving (3')	SY	44	\$200	\$8,800	
Concrete Curb and Gutter	LF	250	\$75	\$18,750	
Roadway drainage, linear curb	EA	2	\$25,000	\$50,000	
Roadway drainage, curb corner	EA	0	\$35,000	\$0	
Roadway drainage, reset existing structure	EA	0	\$7,500	\$0	
Paint, White line, 4"	LF	4000	\$2	\$8,000	Allowance to rechannelize exiting roadway
Paint, Yellow line, 4"	LF	2000	\$2	\$4,000	Allowance to rechannelize exiting roadway
Paint, High Visibility Crosswalk, Per Lane	LN	7	\$120	\$840	Allowance to rechannelize exiting roadway
Paint, Stop Bar, 24"	LN	6	\$75	\$450	Allowance to rechannelize exiting roadway
Yield pavement symbols	LN	0	\$500	\$0	
Pavement symbols	EA	10	\$300	\$3,000	Allowance to rechannelize exiting roadway
Bike Intersection Channelization	EA	0	\$4,000	\$0	
Tuff Curb and Post	LF	0	\$50	\$0	
Speed hump	EA	0	\$4,500	\$0	
Traffic Signals and Crossing Protection					
Rectangular Rapid Flashing Beacon (RRFB), hard wired	EA	0	\$30,000	\$0	
Traffic signal	EA	0	\$750,000	\$0	
Electrical service connection	EA	0	\$20,000	\$0	
Subtotal				\$164,996	
Contingency		45%		\$74,248	
Construction Subtotal				\$239,244	
Professional Services					
Development/Design Consultant	LS	12%		\$28,709	
Agency Staff Administration	LS	14%		\$33,494	
Construction Management	LS	4%		\$9,570	
Legal, Permits, Fees	LS	10%		\$23,924	
Start-up	LS	3%		\$7,177	
Subtotal				\$102,875	
Contingency		10%		\$10,288	
Professional Services Subtotal				\$113,163	
Grand Total				\$352,407	
Rounded Grand Total				\$350,000	

Project 10-N6: Southcenter Blvd Bikeway and Pedestrian Crossing Upgrades

Figure 5-5 Conceptual Design for Project 10-N6



Project Description

Jurisdiction: City of Tukwila

Description: Improve the existing bike lanes and crosswalks on Southcenter Blvd within 0.5 mile of Tukwila International Boulevard Station. Rechannelize roadway to accommodate separated bike lanes: 11' general purpose lanes, tuff curb and post. Tighten the intersection at both legs of 40th Ave S to shorten the crossing distance for people biking and walking. Add bike channelization such as crossbikes at the intersection of Southcenter Blvd and TIBS station entrance. Upgrade crosswalk markings to high visibility at Southcenter Blvd/TIBS station entrance and Southcenter Blvd/42nd Ave S.

Cost Estimate

Table 5-3 Preliminary Cost Estimate for Project 10-N6

Preliminary Cost Estimate (2023\$)	
Construction Subtotal	\$261,497
Professional Services Subtotal	\$123,688
Grand Total	\$385,185
Rounded Grant Total	\$390,000

Detailed cost estimate can be found in Appendix A

Project Name 10-N6 Southcenter Blvd Bikeway and Pedestrian Crossing Upgrades

Project Description

Improve the existing bike lanes and crosswalks on Southcenter Blvd within 0.5 mile of Tukwila International Boulevard Station. Rechannelize roadway to accommodate separated bike lanes: 11' general purpose lanes, tuff curb and post. Tighten the intersection at both legs of 40th Ave S to shorten the crossing distance for people biking and walking. Add bike channelization such as crossbikes at the intersection of Southcenter Blvd and TIBS station entrance. Upgrade crosswalk markings to high visibility at Southcenter Blvd/TIBS station entrance and Southcenter Blvd/42nd Ave S.

Corridor I-405, S1 Line
Station Tukwila International Blvd Station
Jurisdiction Tukwila

Notes and Assumptions
 Corridor distance is 1,500' LF from TIBS access to 100' east of 42nd Ave S

Prepared by NN, MAB
Date 10/10/2023
Checked by CEH
Date 10/19/2023



Description	Unit	Quantity	Unit Cost (2023)	Total Cost	Notes and Assumptions
Percentage Based Allocations					
Demolition	LS	\$138,725	5%	\$6,936	
Site Utilities/Utility Relocation	LS	\$138,725	5%	\$6,936	
Traffic control	LS	\$138,725	10%	\$13,873	
Mobilization	LS	\$138,725	10%	\$13,873	
Pedestrian, Bike Access, and Accommodation, Landscaping					
Concrete Sidewalk	SY	0	\$80	\$0	
Curb Ramps	EA	0	\$3,000	\$0	
Street Trees	EA	0	\$1,200	\$0	
Asphalt Paving (3")	SY	0	\$200	\$0	
Concrete Curb and Gutter	LF	0	\$75	\$0	
Roadway drainage, linear curb	EA	0	\$25,000	\$0	
Roadway drainage, curb corner	EA	0	\$35,000	\$0	
Roadway drainage, reset existing structure	EA	0	\$7,500	\$0	
Paint, White line, 4"	LF	3000	\$2	\$6,000	Allowance to rechannelize exiting roadway
Paint, Yellow line, 4"	LF	3000	\$2	\$6,000	Allowance to rechannelize exiting roadway
Paint, High Visibility Crosswalk, Per Lane	LN	10	\$120	\$1,200	
Paint, Stop Bar, 24"	LN	7	\$75	\$525	
Yield pavement symbols	LN	0	\$500	\$0	
Pavement symbols	EA	30	\$300	\$9,000	Bike symbols, turn arrows
Bike Intersection Channelization	EA	4	\$4,000	\$16,000	Includes paint and post square-up treatments at 40th Ave S
Tuff Curb and Post	LF	2000	\$50	\$100,000	1000 LF per side assuming reduction for driveways
Speed hump	EA	0	\$4,500	\$0	
Traffic Signals and Crossing Protection					
Rectangular Rapid Flashing Beacon (RRFB), hard wired	EA	0	\$30,000	\$0	
Traffic signal	EA	0	\$750,000	\$0	
Electrical service connection	EA	0	\$20,000	\$0	
Subtotal				\$180,343	
Contingency		45%		\$81,154	
Construction Subtotal				\$261,497	
Professional Services					
Development/Design Consultant	LS	12%		\$31,380	
Agency Staff Administration	LS	14%		\$36,610	
Construction Management	LS	4%		\$10,460	
Legal, Permits, Fees	LS	10%		\$26,150	
Start-up	LS	3%		\$7,845	
Subtotal				\$112,444	
Contingency		10%		\$11,244	
Professional Services Subtotal				\$123,688	
Grand Total				\$385,185	
Rounded Grand Total				\$390,000	