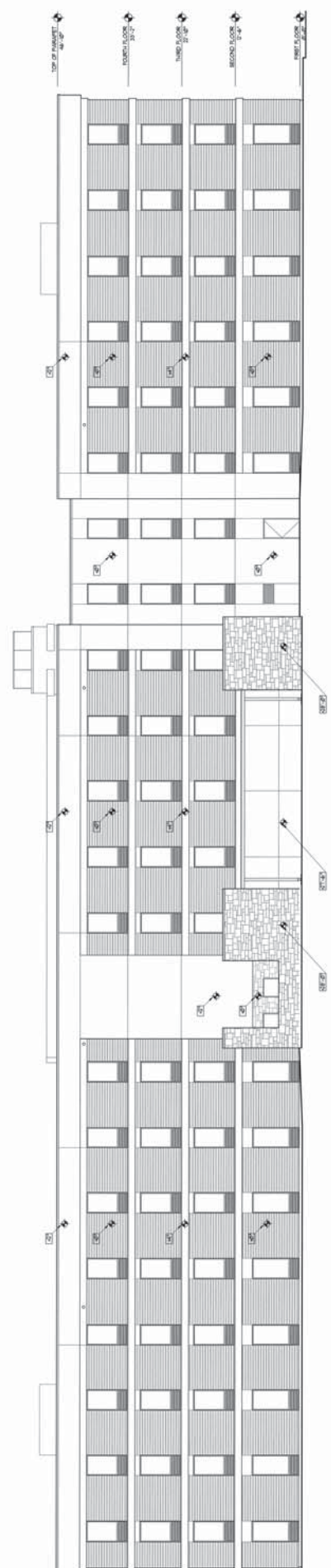
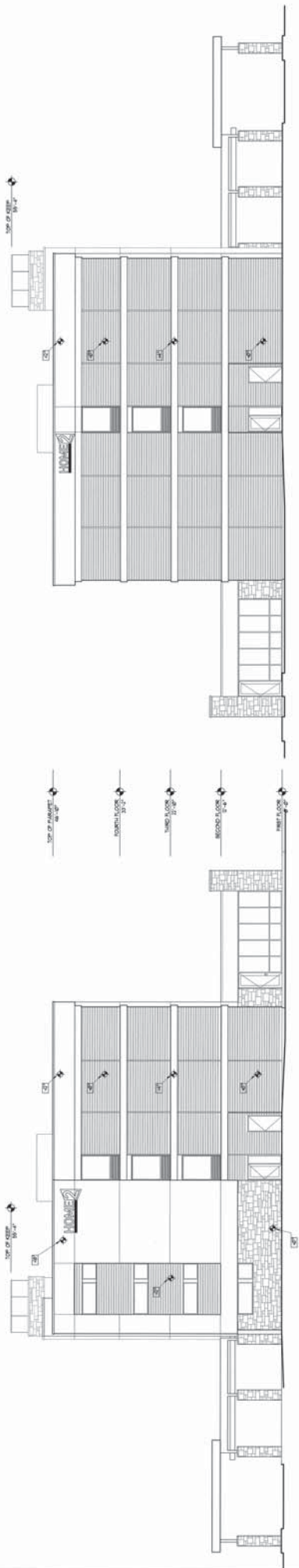


EAST ELEVATION
SCALE: 1/8" = 1'-0"



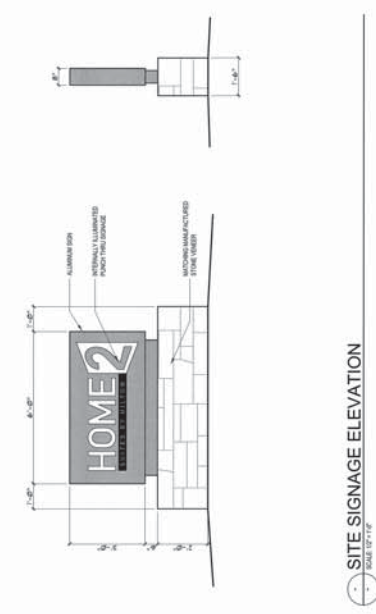
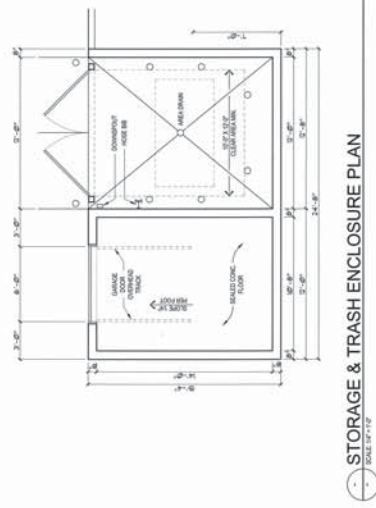
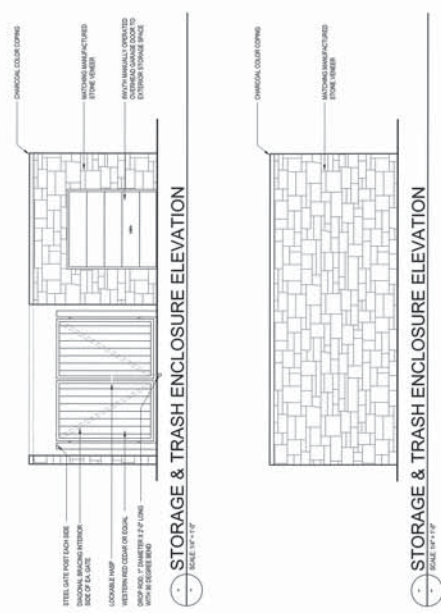
WEST ELEVATION
SCALE: 1/8" = 1'-0"

Tukwila Home2 Suites Hotel Development
 Tukwila, Washington
 THE WIDEWATERS GROUP
 March 11, 2012



SOUTH ELEVATION
SCALE: 1/8" = 1'-0"

NORTH ELEVATION
SCALE: 1/8" = 1'-0"



Tukwila Home2 Suites Hotel Development
Tukwila, Washington
THE WIDEWATERS GROUP

D-Series Size 1
LED Area Luminaire

Item	Quantity	Notes
1	1	See Schedule

Introduction
The D-Series luminaire is a high performance, high efficiency, long life, low power consumption luminaire. The outstanding features of the D-Series luminaire include:
• Excellent uniformity
• Greater pole spacing and lower power density
• Ideal for retrofit applications
• Applications with typical average savings of 50% and operational service life of over 100,000 hours.



EXAMPLE: D001 LED 2 300700W/AC 301 MOUNT 5/8 DIA D0010

Item	Description	Quantity	Notes
1	LED Luminaire	1	See Schedule
2	Mounting Hardware	1	See Schedule

Specifications

Item	Description	Quantity	Notes
1	LED Luminaire	1	See Schedule
2	Mounting Hardware	1	See Schedule

SPECIFICATIONS

MATERIAL
The BR-1D, bike rack shall be fabricated with 304 stainless steel pipe conforming to ASTM A313. Details shall be produced by manufacturer's standard drawing procedures.

PROTECTIVE COATINGS
Powder Coating: Following fabrication, bike racks shall be cleaned and treated with an iron phosphate primer. This process shall include a non-toxic phosphate primer, a zinc-rich primer, and an acrylic topcoat. Following application, the parts shall be baked until properly cured. The coating shall be applied to all surfaces of the bike rack, including the interior of the rack.

Options for finish: Manufacturer's standard color, or other color as specified on the schedule.

Options for mounting: Surface mounting, or other mounting as specified on the schedule.

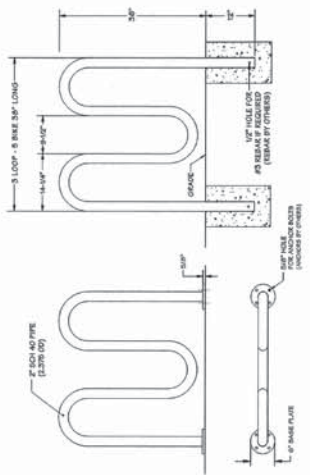
Note: Unless otherwise specified, bike racks shall be powder coated in a standard Raintex color.

Options
Mounting: Embed, surface mount
Finish: Manufacturer's standard color, or other color as specified on the schedule.

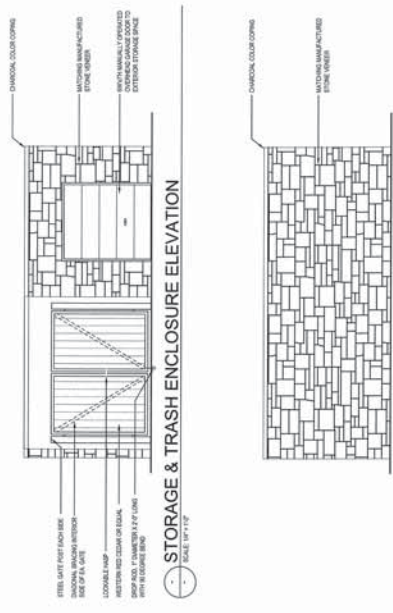
Hot Dip Galvanizing, instead of powder coating: Following fabrication, the bike rack shall be hot dip galvanized to standard ASTM A123, 3 to 4 mils thickness.

Please Note: For permanent embed, depth and diameter of installation hole may vary with soil conditions. Consult project engineer for correct dimensions.

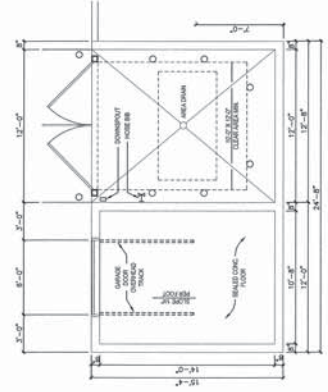
FairWeather Site Furnishings
Post Office Box 2620 at 1st Ave. Tukwila, WA 98148
Phone: 206.835.1111



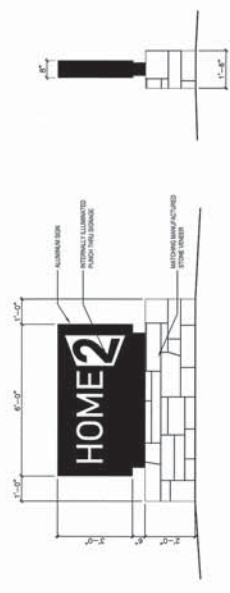
Bike Rack, Model BR-1.5



STORAGE & TRASH ENCLOSURE ELEVATION
SCALE: 1/4" = 1'-0"



STORAGE & TRASH ENCLOSURE PLAN
SCALE: 1/4" = 1'-0"



SITE SIGNAGE ELEVATION
SCALE: 1/4" = 1'-0"



↖ DENOTES PUBLIC ACCESS POINT

LOBBY LEVEL PLAN
SCALE 1/8" = 1'-0"

MARCH 15, 2012

Tukwila Home2 Suites Hotel Development

Tukwila, Washington
THE WIDEWATERS GROUP

MAR 13, 2012

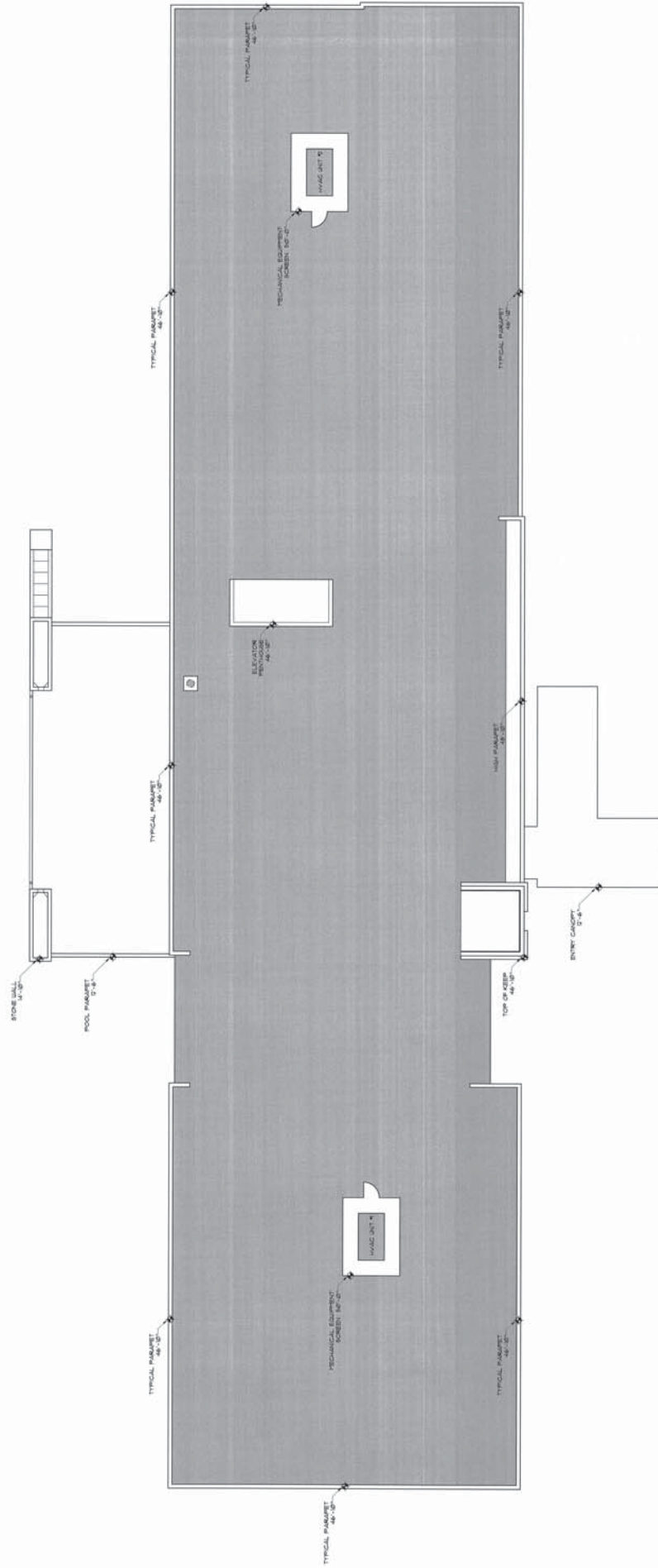


TYPICAL LEVEL PLAN
 SCALE 1/8" = 1'-0"

MARCH 15, 2012

Tukwila Home2 Suites Hotel Development

Tukwila, Washington
 THE WIDEWATERS GROUP
MARCH 15, 2012



ROOF PLAN
SCALE 1/8" = 1'-0"

MARCH 15, 2012

Tukwila Home2 Suites Hotel Development
Tukwila, Washington
THE WIDEWATERS GROUP
March 15, 2012