



Sign Elevations

STATION
IDENTIFICATION

A2.0 Transit Beacon,
Minor

EXHIBIT
3.1

Not For Construction
Not To Scale

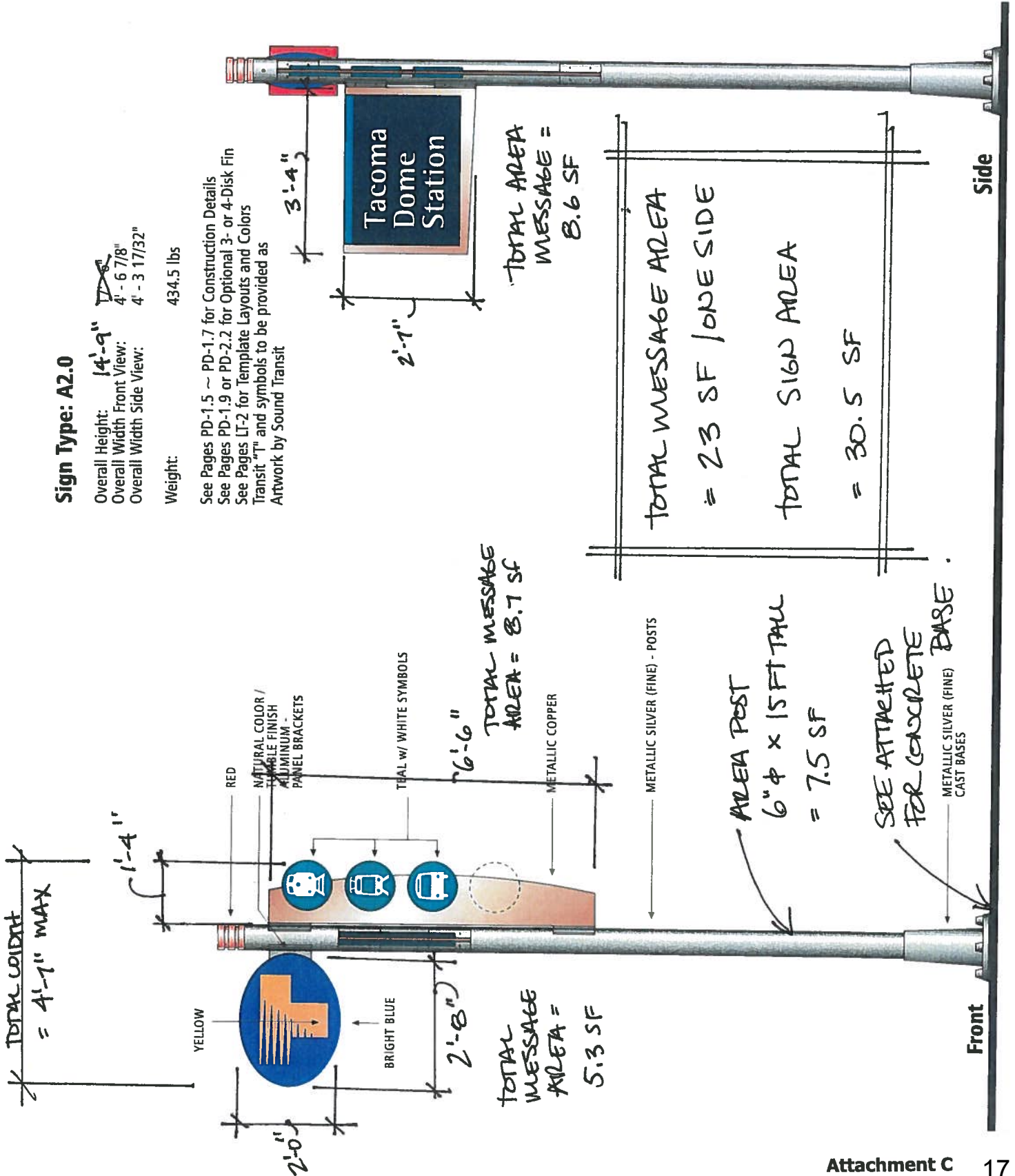
Sound Transit management
assumes responsibility for all
sign symbols, messages and
content within the system.

Sign Type: A2.0

Overall Height: 14'-9"
Overall Width Front View: 4'-6 7/8"
Overall Width Side View: 4'-3 17/32"

Weight: 434.5 lbs

See Pages PD-1.5 ~ PD-1.7 for Construction Details
See Pages PD-1.9 or PD-2.2 for Optional 3- or 4-Disk Fin
See Pages LT-2 for Template Layouts and Colors
Transit™ and symbols to be provided as
Artwork by Sound Transit



STRUCTURAL ELEMENTS Cast Parts / Bases

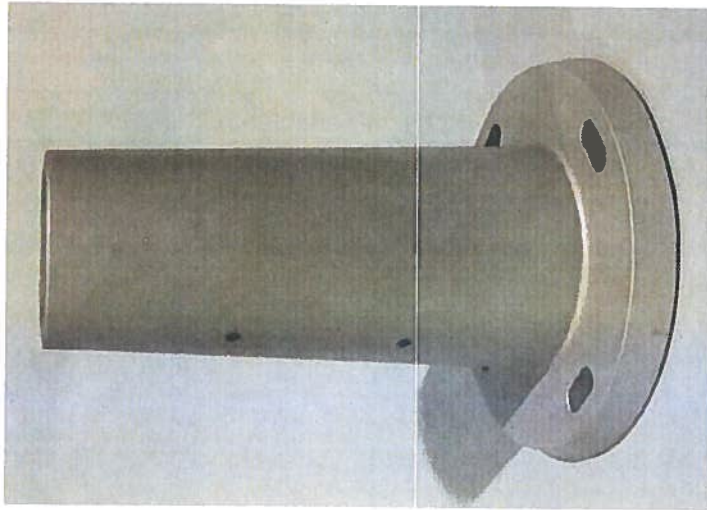


Design Standards

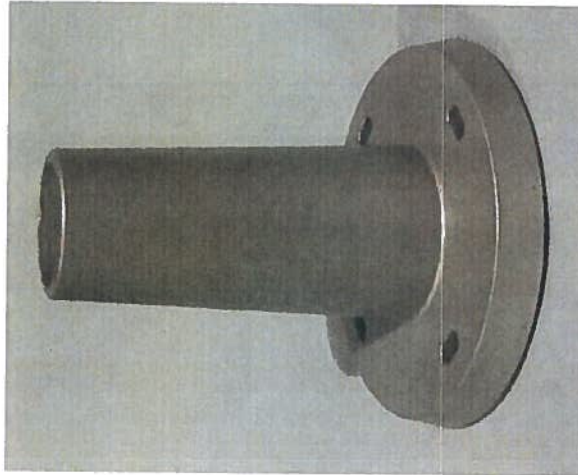
**STRUCTURAL
ELEMENTS**

Cast Parts
Bases

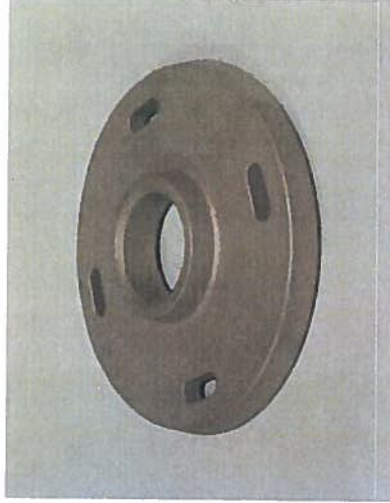
LARGE BASE (CD-9)
SIGN TYPE: A- AND B-SERIES



SMALL BASE (CD-99)
SIGN TYPE: H-SERIES



SMALL POST BASEPLATE (CD-36)
SIGN TYPE: T-, E- AND F-SERIES



BOLT CAPS
ALL SIGNS TYPES USING BASES SHOWN ABOVE



**EXHIBIT
3.2**

Not For Construction

