

Platform Signage
Station Information
Display Case
A11 Sign Type

4.22

Sign Size and Layout

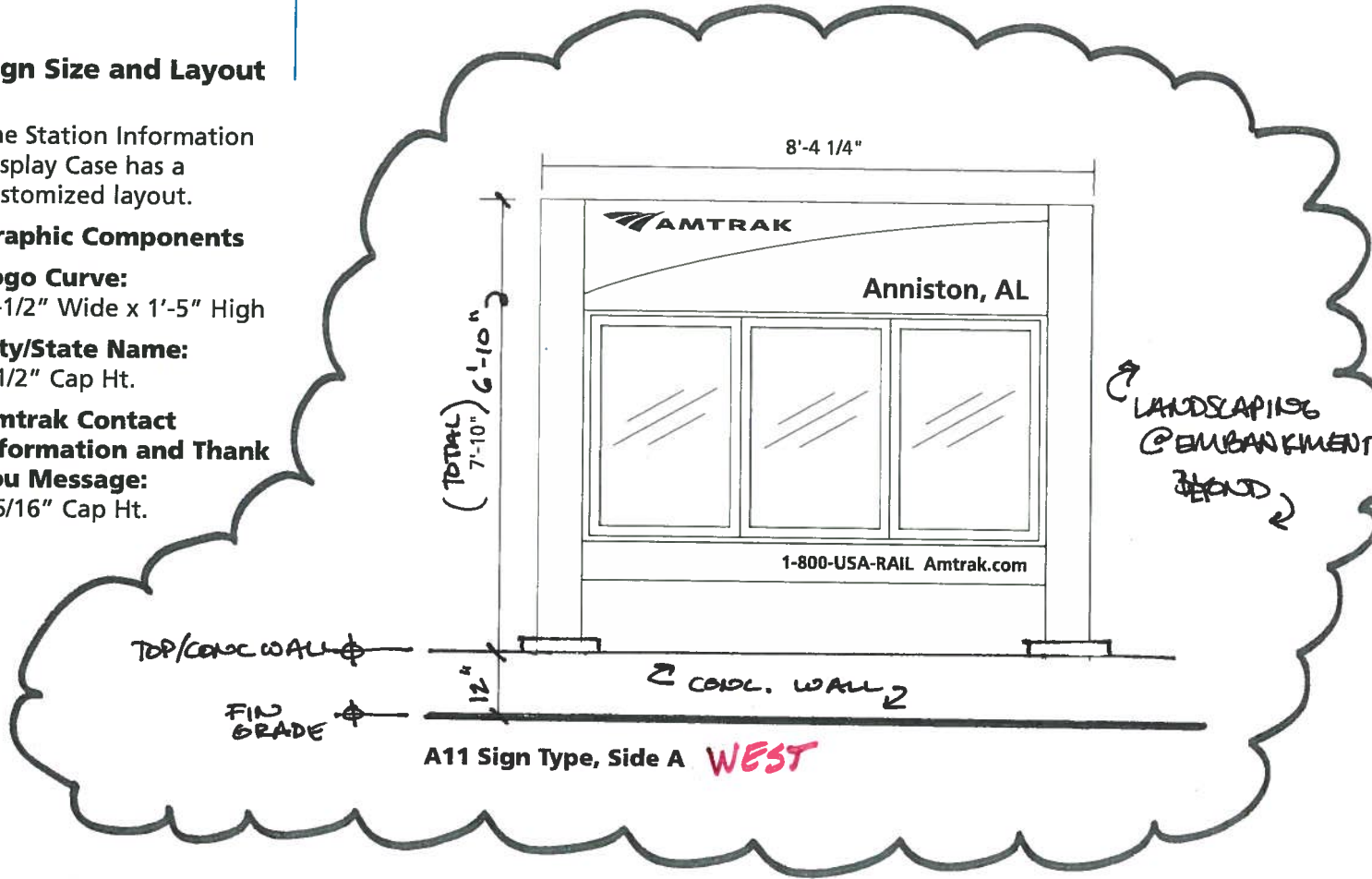
The Station Information Display Case has a customized layout.

Graphic Components

Logo Curve:
 7'-1/2" Wide x 1'-5" High

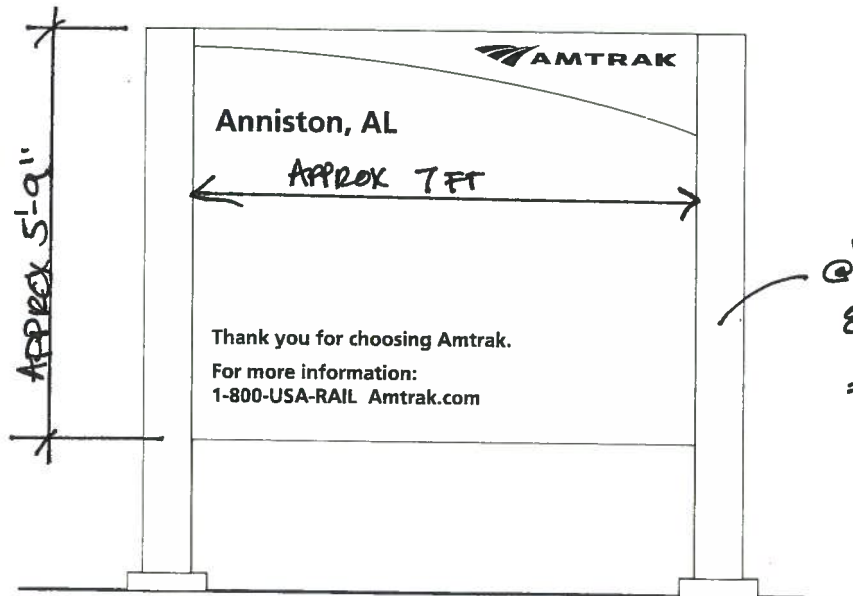
City/State Name:
 3 1/2" Cap Ht.

Amtrak Contact Information and Thank You Message:
 2 5/16" Cap Ht.



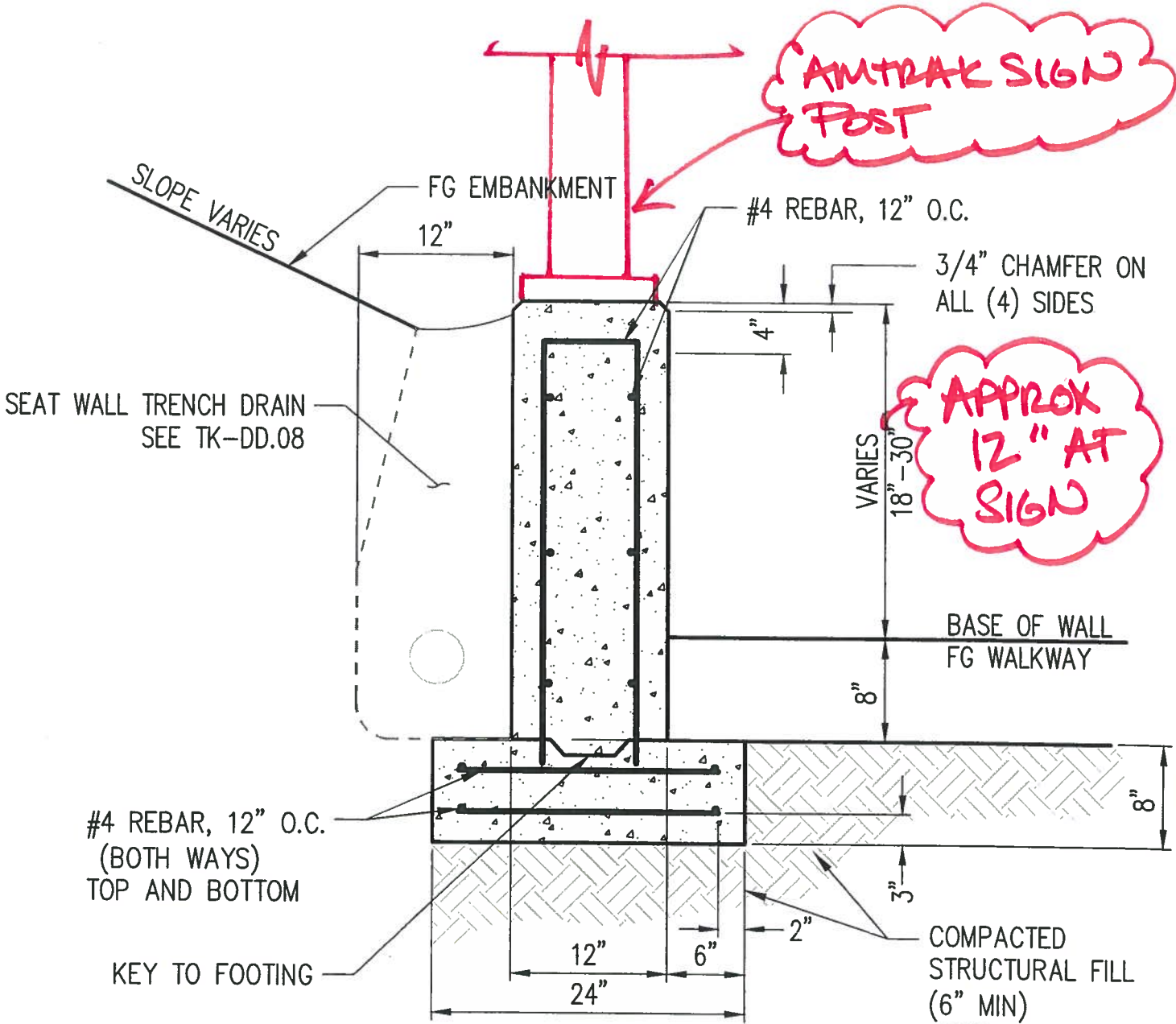
TOTAL MESSAGE
 AREA = 7' x 5'-9"
 = 40 SF/SIDE

TOTAL SIGN
 AREA = 49 SF/SIDE



A11 Sign Type, Side B EAST

EXHIBIT 2.1



SEAT WALL

SCALE: NTS

TK-CP.04, TK-CP.05, TK-CP.06, TK-CX.02

7

BASE AT AMTRAK SIGN ALL "STATION ID"

EXHIBIT 2.2

4.23

Platform Signage Station Information Display Case A11 Sign Type

Design Intent Drawing

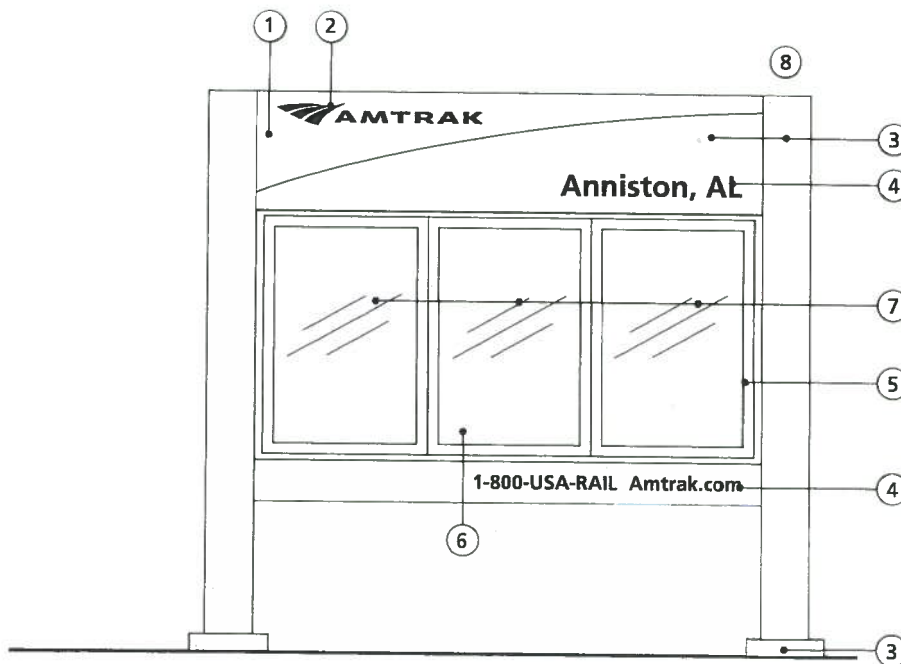
Finishes

- 1) Logo curve painted AMT Blue*
- 2) Amtrak logo painted White*
- 3) Posts, panels, and bases painted Silver*
- 4) Frutiger 65 Bold text painted AMT Blue*
- 5) WSM model TN36 (2130 x 1052 x 60mm) triple sash top-hinged lockable, tamper-proof, weatherproof cabinet
- 6) Tack surface
- 7) Changeable information (approved contents and display format from Amtrak Signage Brand Management)
- 8) Entire sign clear coated*

* Paint

- Matthews Acrylic Polyurethane Low Volatile Organic Compound (LVOC) specifications provided.
- AMT Blue
Satin VOC#
SVOC1142SP
- Silver
Satin VOC# MP18073
- White
Satin VOC# SV202SP
- Clear Coat
VOC Satin Clear
#281228

For additional information on Sign Type A11 contact Amtrak Signage Brand Management.



A11 Sign Type, Side A

EXHIBIT 2.3

**Platform Signage
Station Information
Display Case
A11 Sign Type**

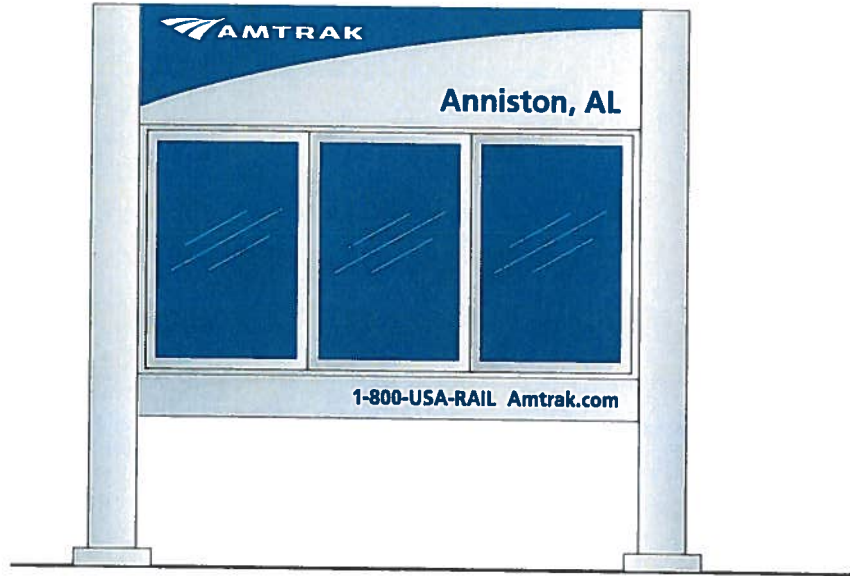
4.20

Sign Overview

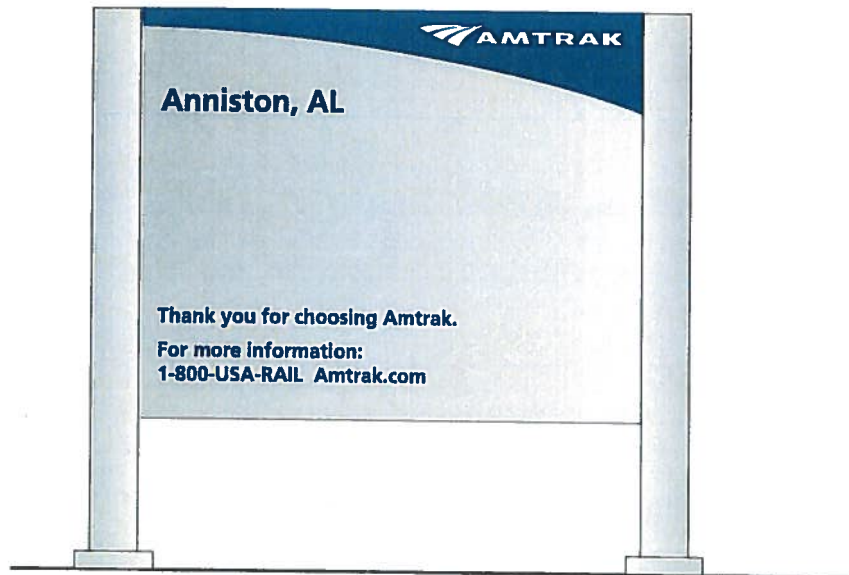
The freestanding A11 Sign Type is used to display changeable information on platforms at unstaffed stations or stations with limited activity. These branded signs identify the station and contain a display case which permits Amtrak employees to update information quickly and easily.

The A11 Sign Type has two distinct sides. Side A contains the display case with three (3) key-locked, tempered glass panels that swing up for access to a continuous tack surface for posting changeable information. Side A also displays permanent information including the Logo Curve, the station name and two letter state designation and Amtrak contact information. Side B has no display case but has the same permanent information as Side A plus a thank you message.

Only certain kinds of changeable information shall be displayed in Sign Type A11. Contact Amtrak Signage Brand Management for approved contents and display formats.



A11 Sign Type, Side A (shown without display case contents)



A11 Sign Type, Side B



A11 Sign Type, Plan View

**EXHIBIT
2.4**

4.21

Platform Signage Station Information Display Case A11 Sign Type

Mounting Option

The following Mounting Option provides a guideline for the placement of Station Information Display Case.

Comments

- Sign placement is coordinated by Amtrak management.
- One sign per unstaffed station.



**A11 Sign Type, Side A
Freestanding on Custom Posts**



**A11 Sign Type, Side B
Freestanding on Custom Posts**

EXHIBIT
2.5