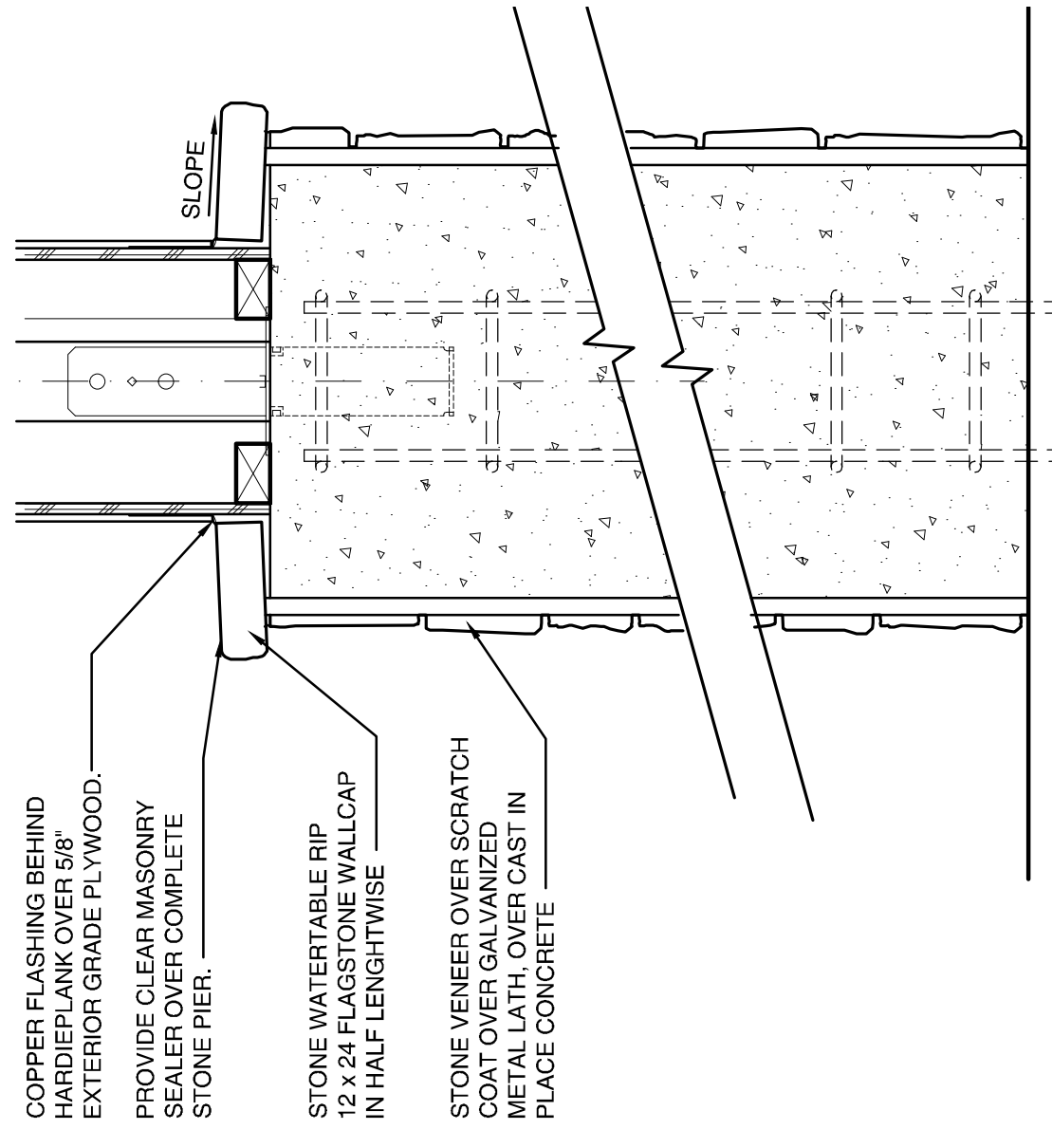


GENERAL NOTES

- A. PRIME FACE BACKS AND EDGES OF ALL PLYWOOD, BATTENS AND TRIM PRIOR TO INSTALLATION.
- B. ALL EXTERIOR TRIM TO BE SCREWED. DO NOT USE STAPLES. FILL HOLES PRIOR TO FINISH COAT OF PAINT.
- C. SIGNAGE SHALL CONFORM TO LOCAL STANDARDS.
- D. ALL TRIM BOARDS, CAP FLASHING AND SOFFIT UNDERSIDES TO BE PAINTED E-PT-2 U.N.O.
- E. WINDOW GRAPHICS, GRAPHIC LETTERING AND LOGO CRITERIA BY SIGN COMPANY.
- F. IN PRE-EXISTING CLIMATES ONLY, A.C. TO PROVIDE AND INSTALL SNOW GUARDS AS MANUFACTURED BY SNO-GEM. CLEAR ORIGINAL POLYCARBONATE SNOW GUARD 5" X 5" BASE. APPLY IN DIAMOND ORIENTATION ACCORDING TO MANUFACTURER'S INSTRUCTIONS. SNOW GUARDS SHALL BE INSTALLED AT ALL AREAS OF SLOPED ROOF OVER ENTRY WAYS UTILIZING THE MINIMUM REQUIRED.

EXTERIOR FINISH SCHEDULE

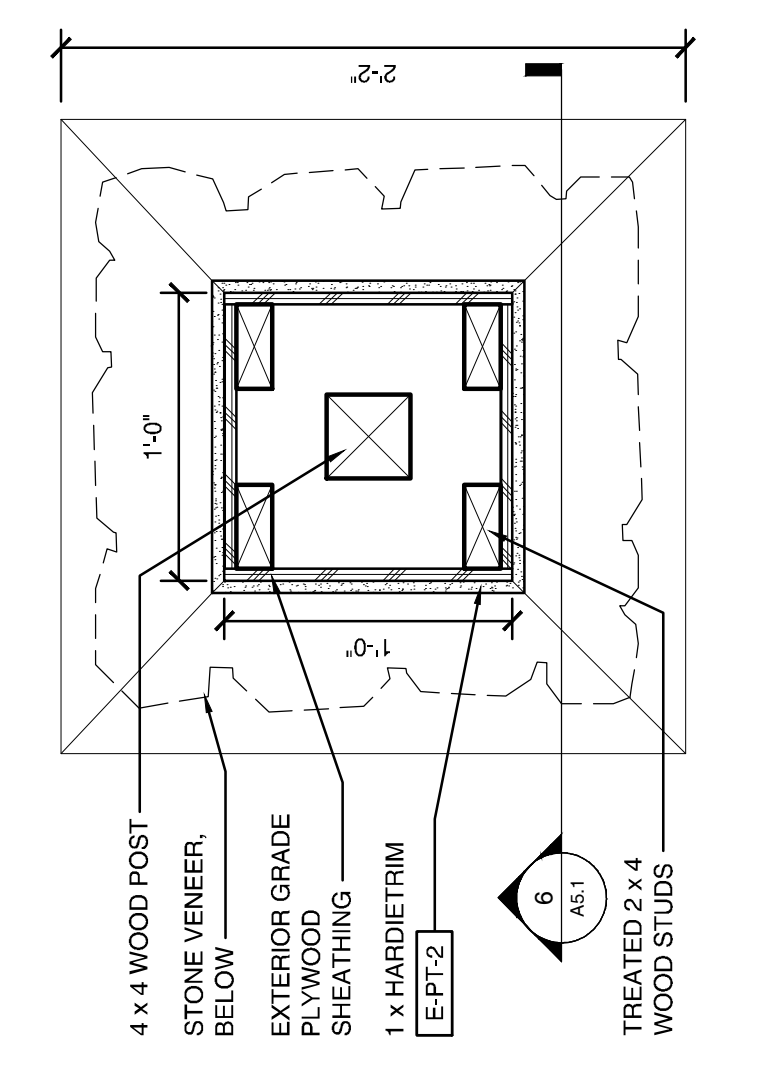
- SLATE SIMULATED SLATE ROOF AS MANUFACTURED BY ECOSTAR (1.800.211.7170); MAJESTIC SLATE TRADITIONAL - MIDNIGHT GRAY BLEND
- STONE STONE VENEER AND WATER TABLE AS MANUFACTURED BY CORONADO STONE PRODUCTS (800.451.1111); WATER TABLE CHESSEBROUGH LIGHT GREY COLOR TO MATCH FIELD STONE; FLAGSTONE WALL CAP AT COLUMNS: 12x24 LIGHT GRAY MORTAR NATURAL JOINTS; NOT TO EXCEED 1/2" APPLY MATTE FINISH SEALANT. REFER TO RW-1
- HP-1 HARDEPLANK LAP SIDING AS MANUFACTURED BY JAMES HARDIE BUILDING PRODUCTS - SELECT CEDARMILL 1/2" X 7" X 16" (6" EXPOSURE)
- HP-2 HARDEPLANK LAP SIDING AS MANUFACTURED BY JAMES HARDIE BUILDING PRODUCTS - SELECT CEDARMILL 1/2" X 7" X 16" (6" EXPOSURE)
- HP-3 HARDETRIM AS MANUFACTURED BY JAMES HARDIE BUILDING PRODUCTS - SMOOTH AID 5/4"
- HP-4 HARDISOFFIT AS MANUFACTURED BY JAMES HARDIE BUILDING PRODUCTS - VENTED CEDARMILL HLD 1/4"
- TRIM TRIM BOARD AS MANUFACTURED BY CERTAINTED - 5/4" X 16" - SMOOTH
- E-PT-1 BENJAMIN MOORE PAINT: AURA SERIES 2152-10 (BLACK) SATIN #631
- E-PT-2 BENJAMIN MOORE PAINT: AURA SERIES 899 (OXFORD WHITE) SATIN #631
- E-PT-3 BENJAMIN MOORE PAINT: AURA SERIES HC-188 (CHELSEA GREY) SATIN #631
- E-PT-4 BENJAMIN MOORE PAINT: AURA SERIES PHE-26 (CLASSIC BURGUNDY) SATIN #631
- *BENJAMIN MOORE CONTACT: LAURA HODGE. (424) 904-1911. laura.hodge@benjaminmoore.com



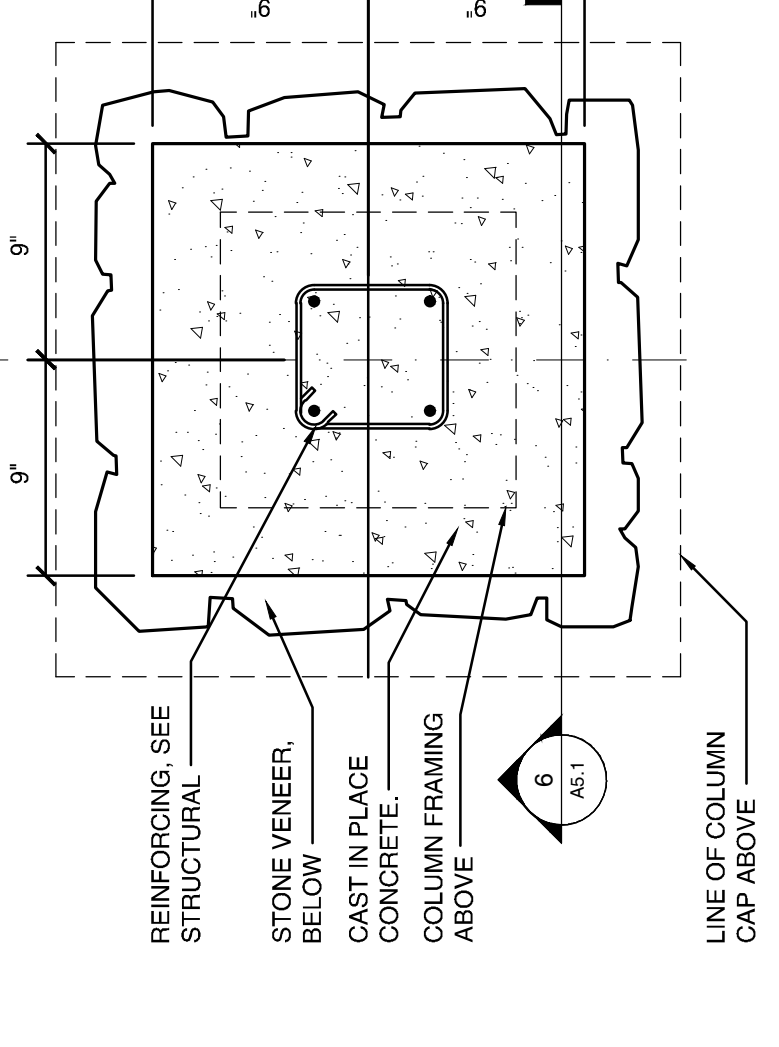
COPPER FLASHING BEHIND WATER TABLE. PROVIDE AS PER MASONRY SEALER OVER COMPLETE STONE PIER.

STONE WATERABLE RIP OVER EXTERIOR GRADE PLYWOOD. PROVIDE AS PER MASONRY SEALER OVER COMPLETE STONE PIER.

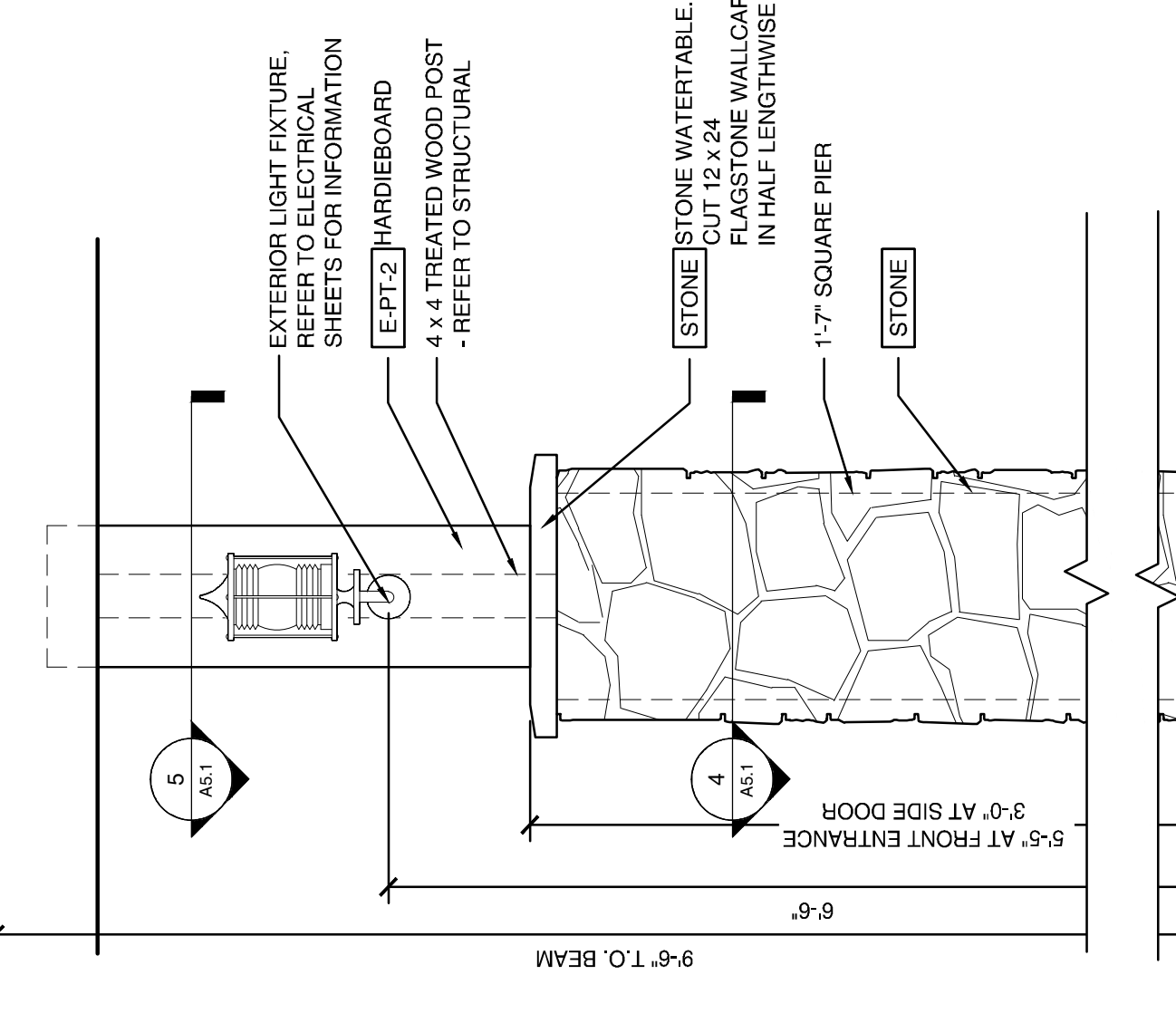
STONE VENEER OVER SCRATCH COAT OVER GALVANIZED METAL LATH CAST IN PLACE CONCRETE.



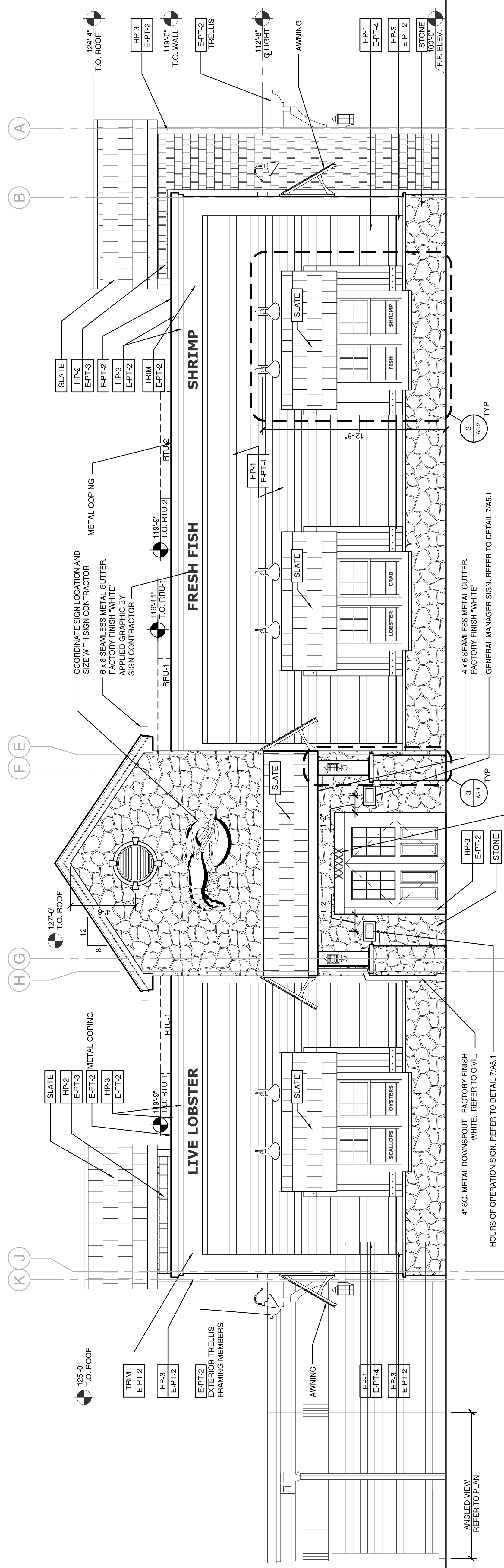
5 COLUMN DETAIL - UPPER CUT
1 1/2"=1'-0"



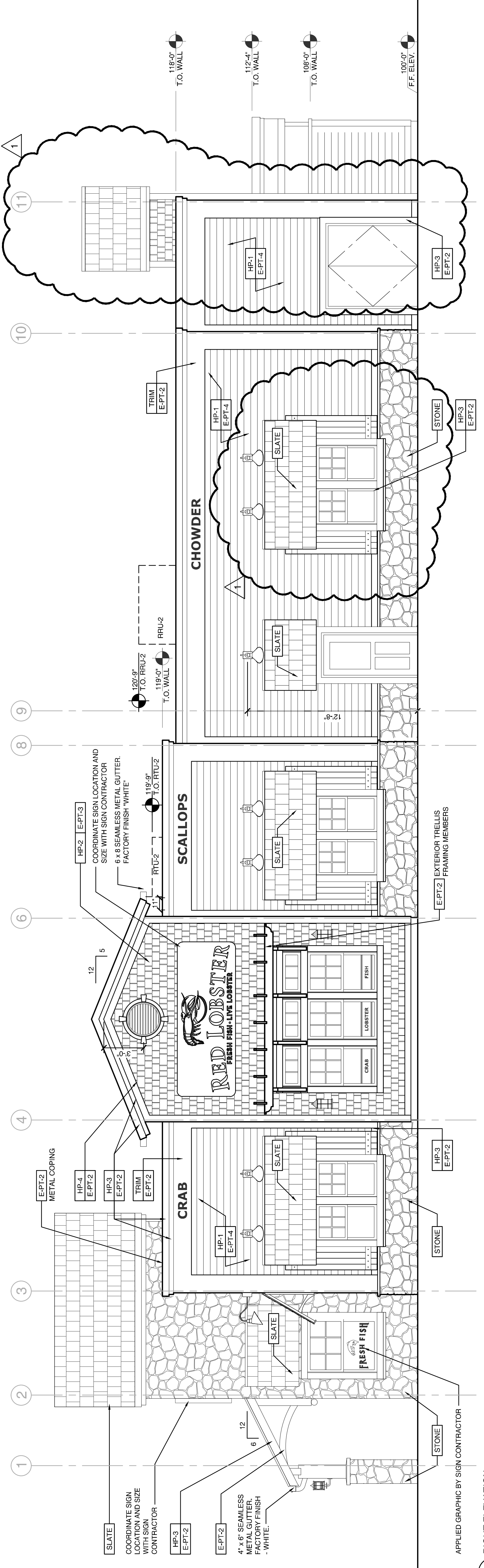
4 COLUMN DETAIL - BASE CUT
1 1/2"=1'-0"



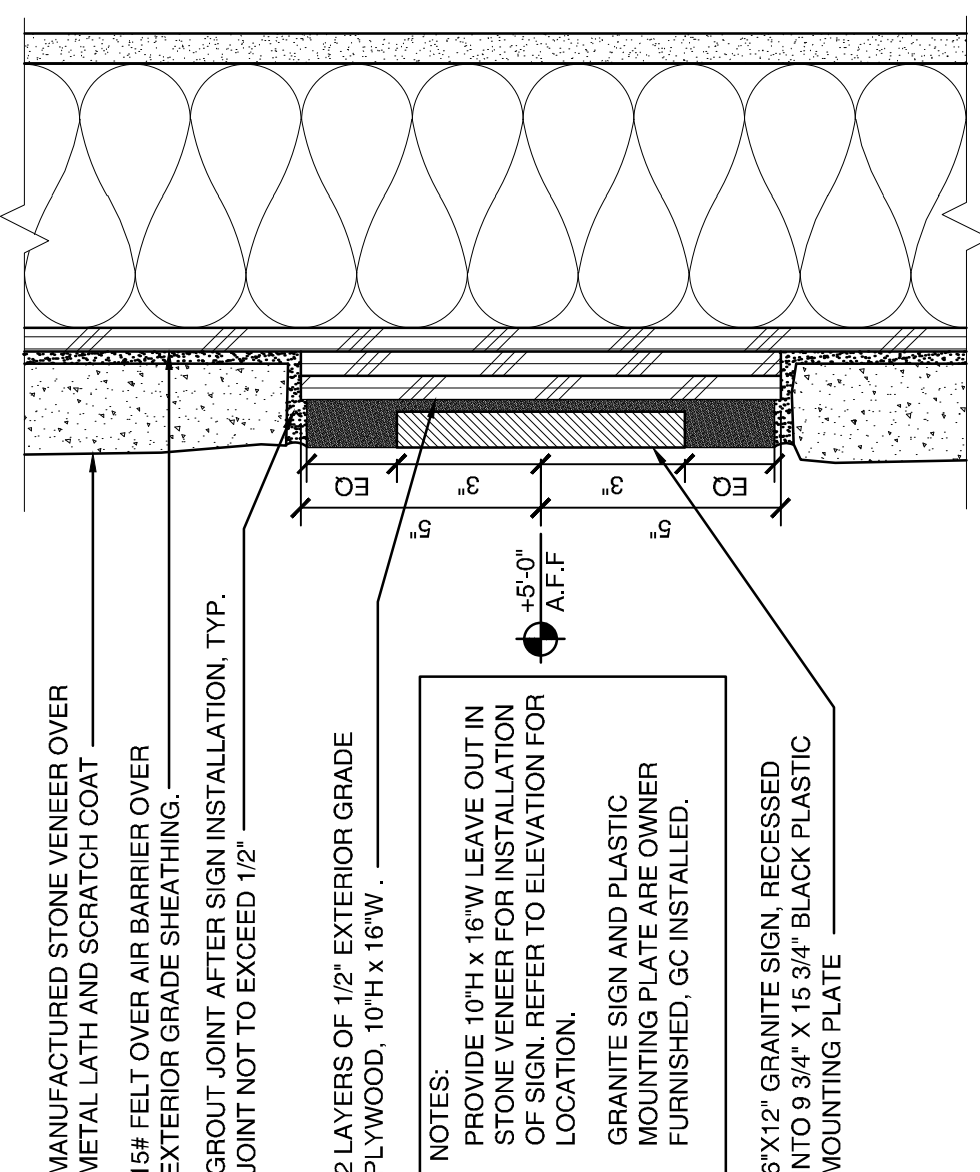
3 COLUMN DETAIL - ELEVATION
3/4"=1'-0"



2 FRONT ELEVATION
1/4"=1'-0"



1 RIGHT ELEVATION
1/4"=1'-0"



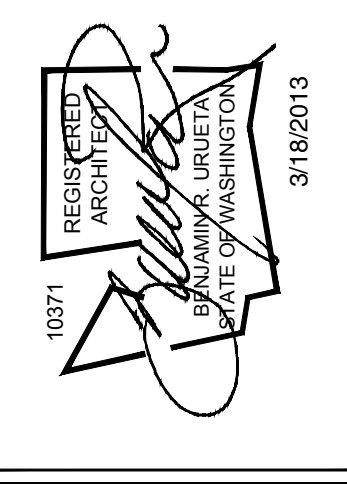
8 STONE WATER TABLE DETAIL
1 1/2"=1'-0"



7 HOURS AND SIGN INSTALLATION SECTION DETAIL
3/8"=1'-0"

Benjamin R. Urueta, Architect
211 East Broad Street Greenville, SC 29601
T. 864.232.2500 F. 864.232.7587

ARCHITECT'S PROJECT #:
13117



Issue Date: 3-18-2012

REVISION INFORMATION	
1	07-11-2013 Municipality Comments

Restaurant #: 6386
RED LOBSTER
BH59 - LEFT
Including Design Directive # 2 - 2011

Southcenter Mall
Tukwila, WA

Drawing
EXTERIOR ELEVATIONS

A5.1

Attachment F

