

A world map with a light blue background and a grid of latitude and longitude lines. The landmasses are shown in a light beige color. The country of Laos is highlighted in a solid red color. The word "Laos" is written in a large, bold, black serif font across the center of the map, overlapping the highlighted area.

Laos



1

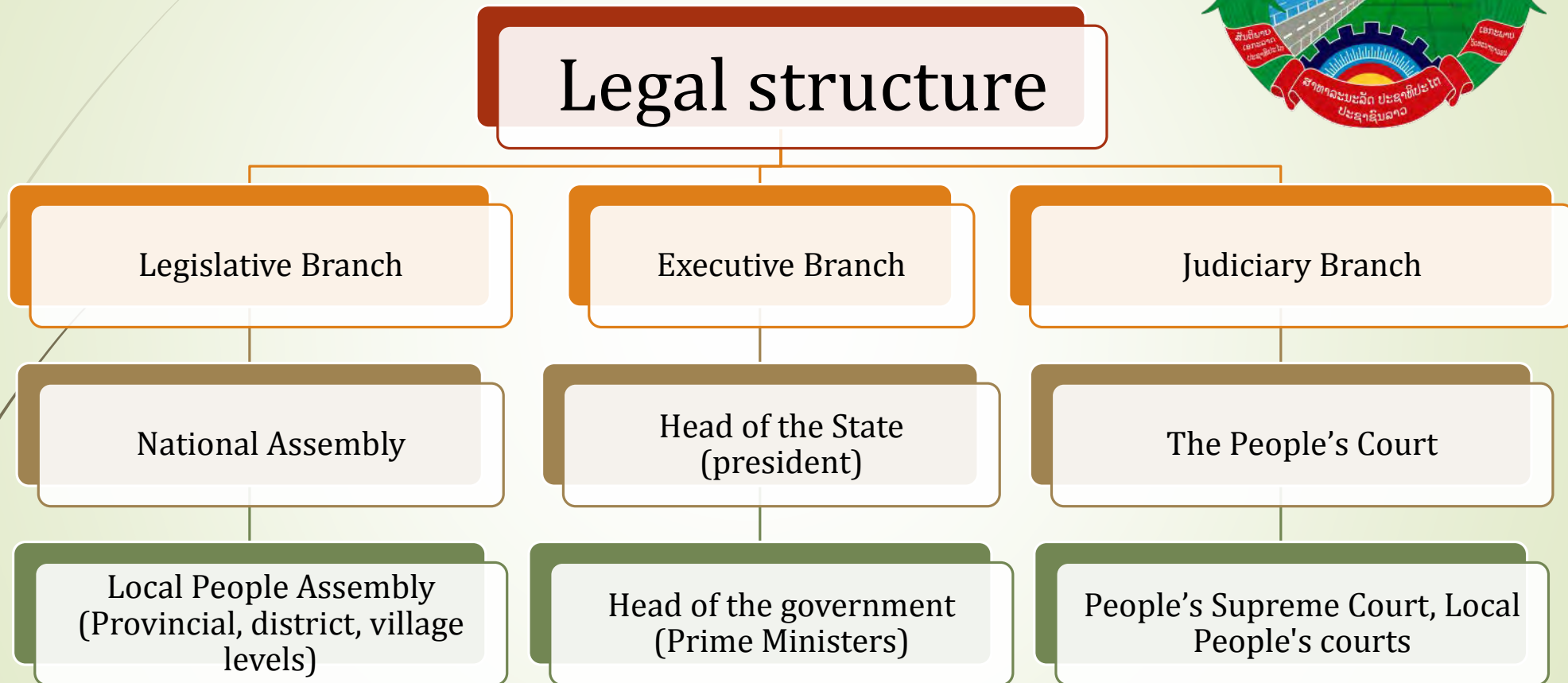
Presented by: Thippaphone Douangsila

1. General Information

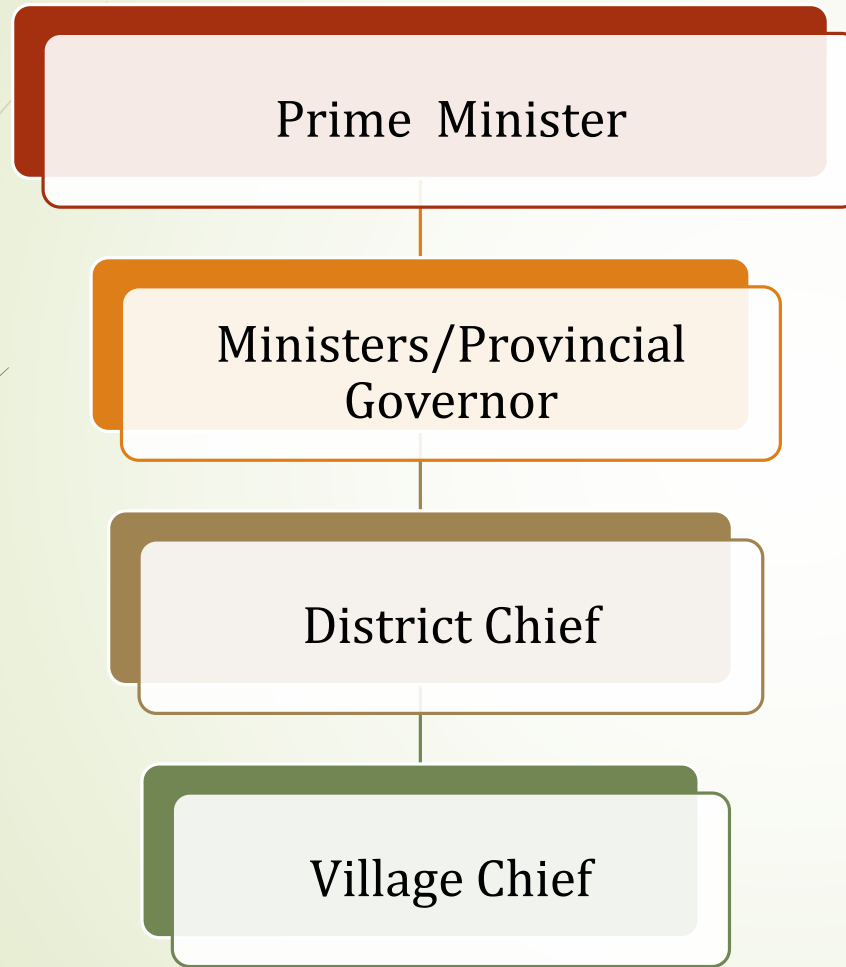
- Capital city: **Vientiane capital**
- Population : **6.8 million (2015)**
- Areas: **236,800 km²**
- Ethnicity : **49 ethnic groups (4 language groups: Lao-Tai (majority), Mon-Khmer, Hmong-Iu Mien, and Chine-Tibetan)**
- Official Language: **Lao**
- Administrative division: **17 provinces, 141 districts, and villages.**



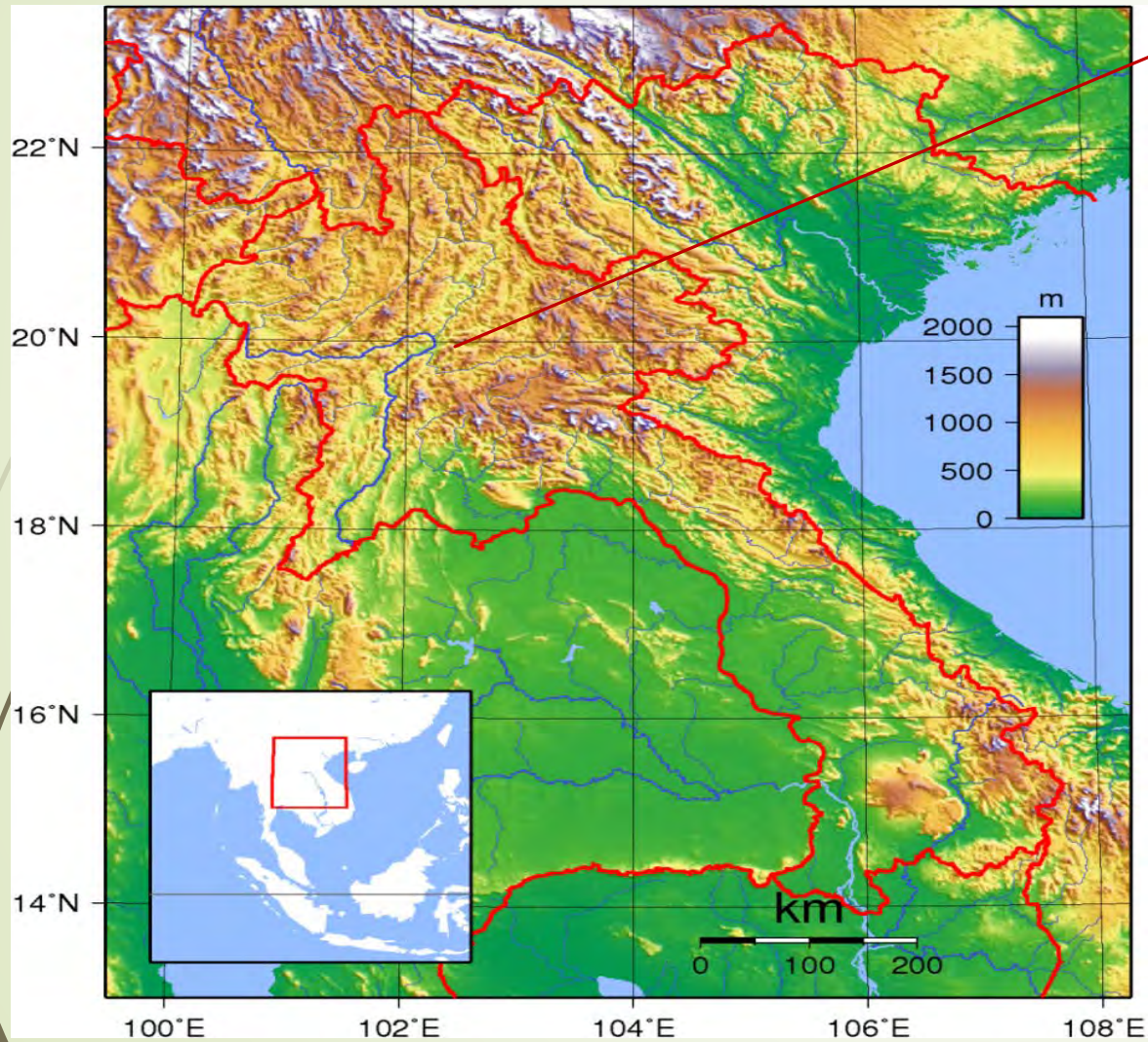
2. Legal structure



3. Government Branch



4. Landscape

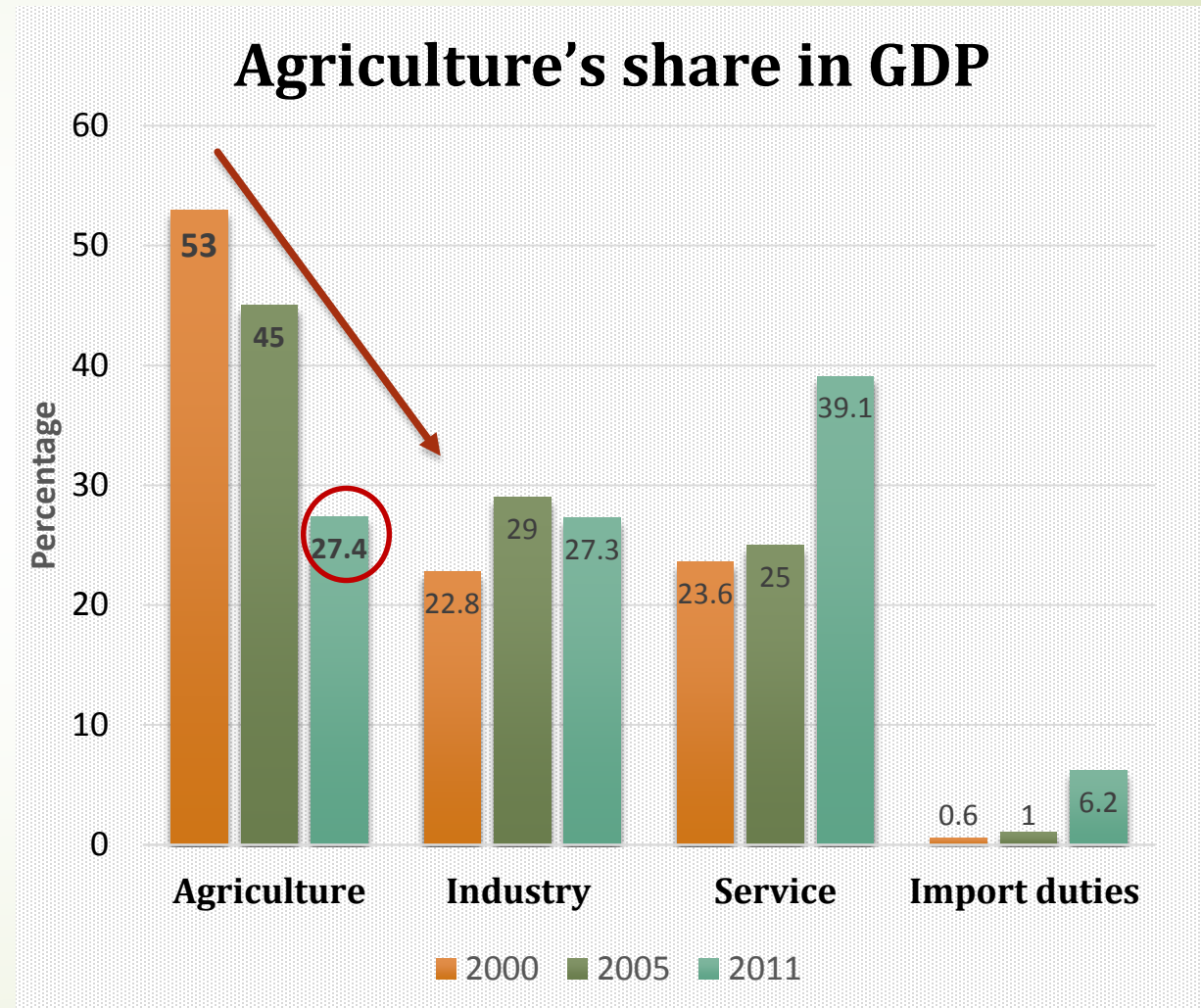


- 80% of the land is mountainous slope, especially in the Northern and Eastern part.
- About 68 % of population live in rural areas.



5. Role of Agriculture in Laos

- Agriculture is the most important sector for sustainable development and poverty reduction
- Agricultural sectors covers **27.4 % of GDP**
- **About 69 %** of the population depend on agriculture, mainly rice cultivation, and raising livestock

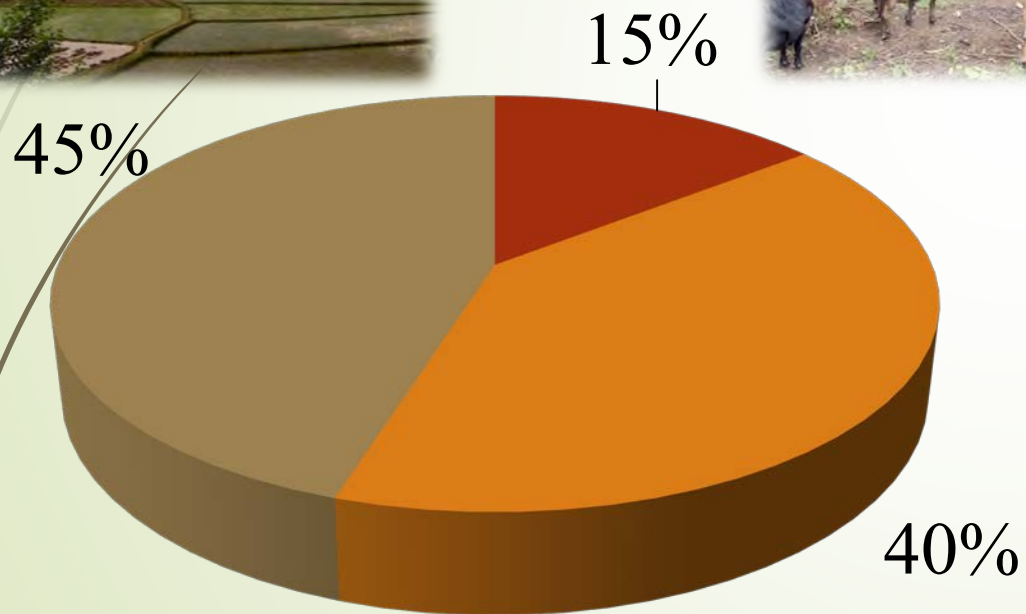


6. Agricultural land

About 4.5 million ha (19% of the total land area) are allocated for agriculture
Of these, 2.5 million ha (10%) have been used for agriculture

Agricultural Land Use

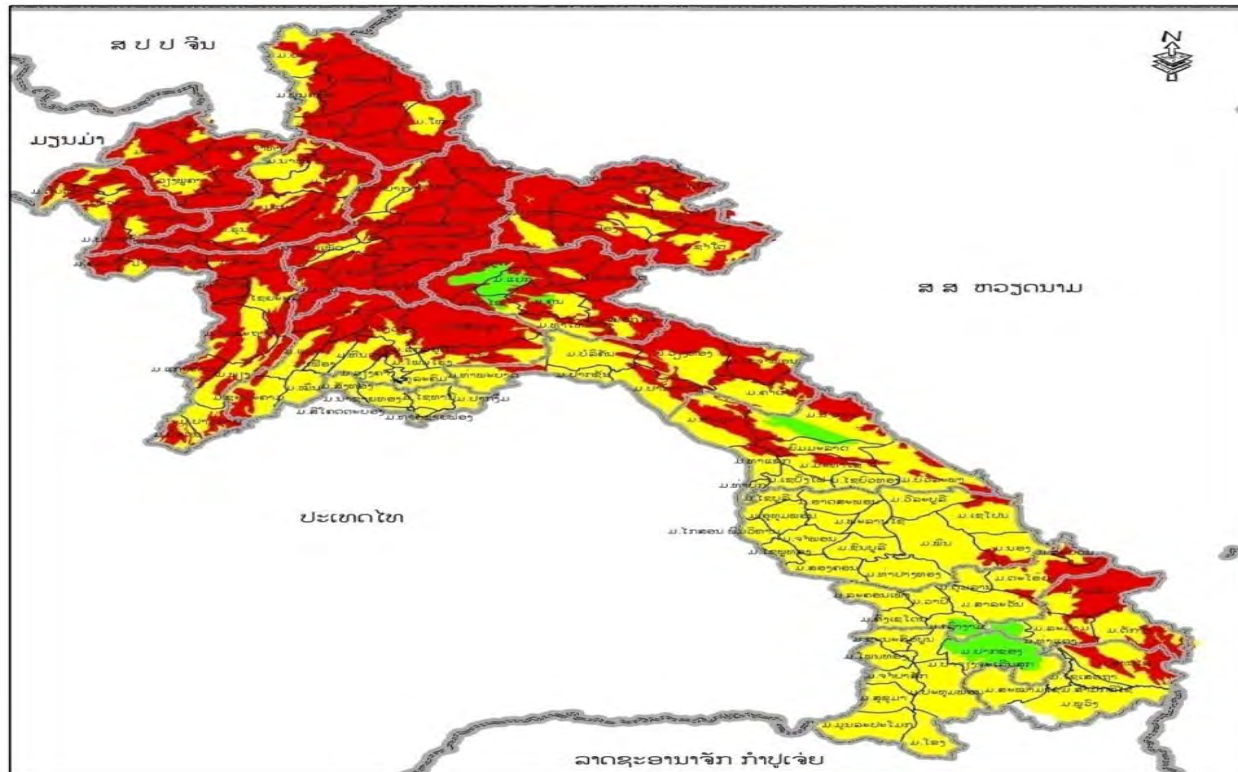
- Grass Land
- Cash Crop/Annual Crop
- Rice Field



1. Rice
2. Maize
3. Cassava
4. Sugar cane
5. Vegetables

6. Agricultural land

4.1 Land allocation for agriculture



ເສັ້ນໜາຍ

- ຂອບເຂດຊາຍແດນ
- ເຂດເຊື່ອມຕໍ່ລະຫວ່າງແຂວງ
- ເຂດເຊື່ອມຕໍ່ລະຫວ່າງເມືອງ
- ເຂດຮາບພຽງ
- ເຂດ ພູພຽງ
- ເຂດ ພູດອຍ

Coordinate System:
Spheroid: Everest
Projection: Transverse Mercator
Zone: 48
Horizontal Datum: UTM WGS84
Grid line: 1000 Km

ກົມຄຸ້ມຄອງ ແລະ ສັດທະນາທິດິນ ກະສິກຳ
ສູນສຳຫຼວດ ແລະ ດາງແຜນ ທີ່ດິນກະສິກຳ
ນະຄອນຫຼວງວຽງຈັນ
ຮູ້ ມ.ນ. ມ
ໂທ: +865 21 770082, 770075
ແຟກ: +856 21 770082, 770075
Email:

0 50 100 200

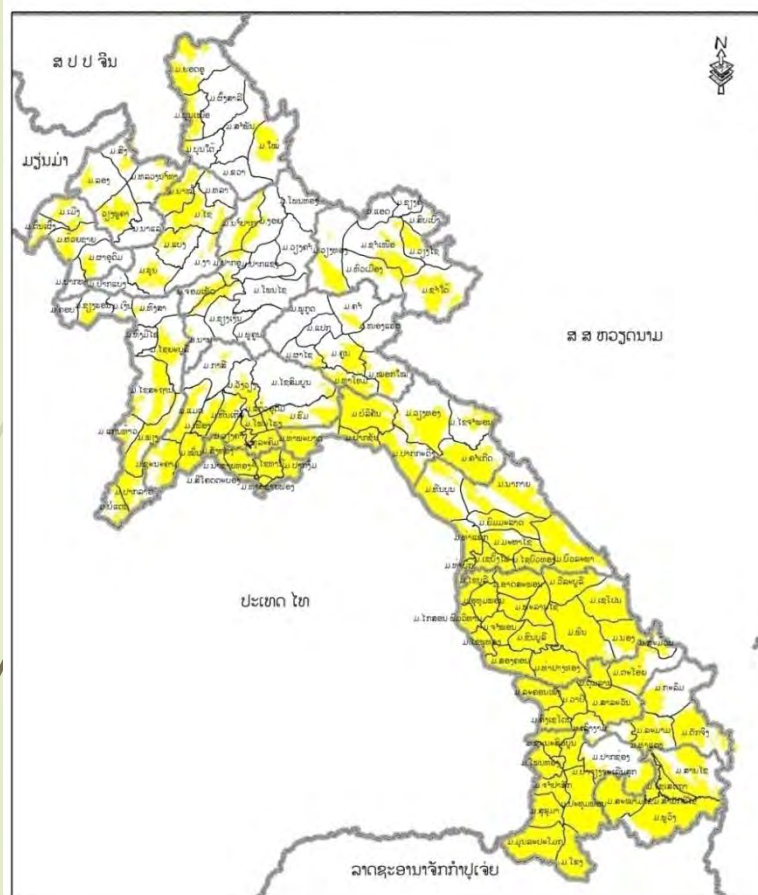
ກະກຽມໂດຍ: ສະແຫວງ ມິ່ງມິ່ງອຳນວຍການທາງພູມສາດ
ສຳຫຼວດ: 0 2008 ຫາ 2012
ຈັດພິມ: ພຶ້ນທີ່ດິນສາດ

► Agricultural land is allocated by basing on the geographical characteristic of 3 main areas :

- 1) **Low land:** about 100-300 m above the sea level
- 2) **Upland:** higher than 500 m from the sea level.
- 3) **High land:** about 500 m from the sea level

Lowland

1.5 million ha used for Agriculture



About 100 – 300 above the sea level



Rain-fed lowland

1. Total areas: 694,665 ha
2. Yield : 3.88 ton/ha

Constraints:

1. Drought
2. Insects
3. Weeds
4. Snails



Irrigated lowland

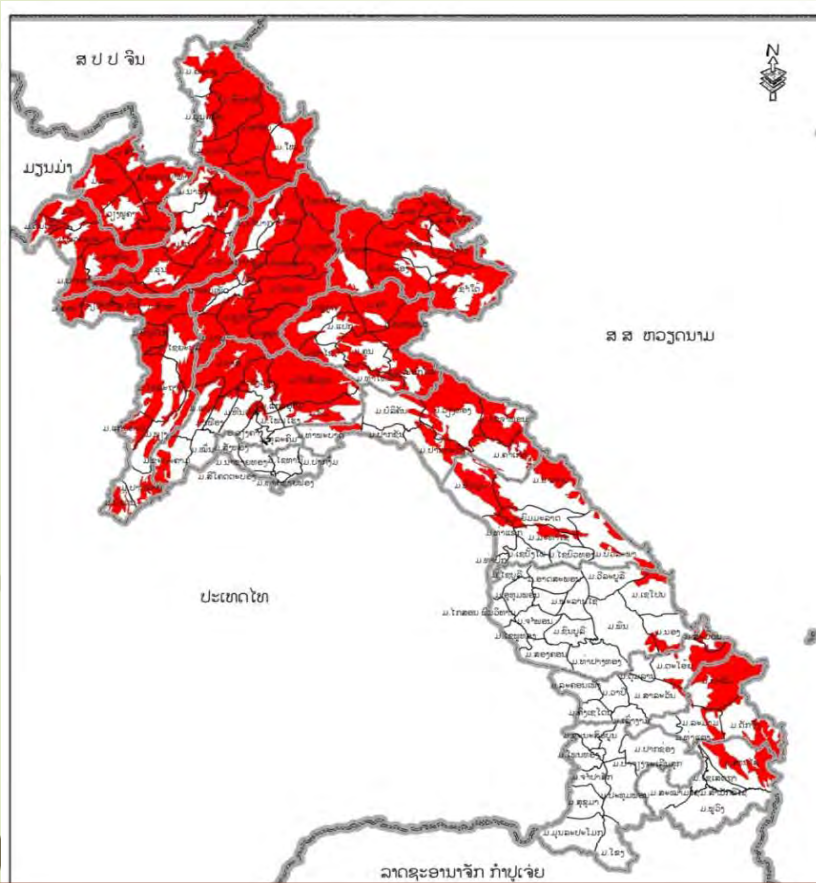
1. Total areas: 112,365 ha
2. Yield : 4.82 ton/ha

Constraints:

1. Weeds
2. Drought
3. Insects
4. High cost : fertilizer and water
5. Labors shortage

Upland

0.74 million ha used for Agriculture



About 300 – 500 m from the sea level



Field preparation
March to April



Planting in May

Production:

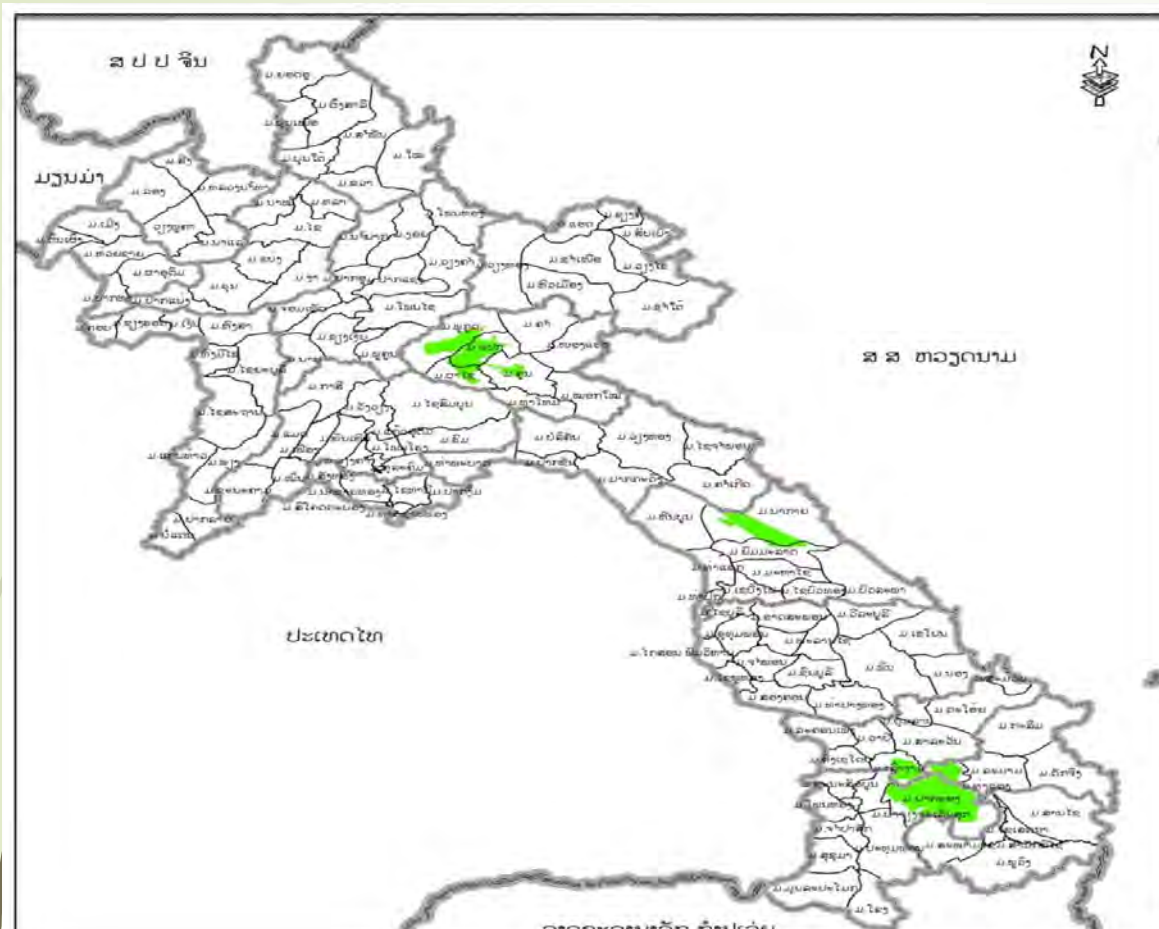
1. Total areas: 107,510 ha
2. Yield : 1.9 ton/ha
3. Farm size: 1 ha/hh
4. Fallow period: 3 years

Constraints:

1. Weeds
2. Rodents
3. Insufficient rainfall
4. Land availability,
5. Insects
6. Labor shortage

Highland

0.17 million ha used for Agriculture



Above 500 m from the sea level



Production:

1. Yield : 20,000 ton/year
2. Coffee types: Robusta and Arabica



7. Agricultural Sector

Ministry of Agriculture and Forestry (MAF)

Several departments

Provincial Agricultural and Forestry office

District Agricultural and Forestry office

Village levels



8. Department of Agricultural Land Management (DALaM)

Major Works



1. Survey, Classification, and Land Used Planning Work.



2. Agricultural Land Management Work.



3. Agricultural Land Conservation and Development of Work.



4. Personnel Capacity Building and Development Work.

9. Lesson learnt from U.S local government



- Participatory process
- Online accessible information
- Learning places for students



9. Lesson learnt from U.S local government



- Partnership with all sectors and surrounding cities
- Partnership with surrounding cities
- Active volunteering citizen for the community



Lesson learnt from U.S local government



Thank You