



INFORMATIONAL MEMORANDUM

TO: Community Development and Neighborhoods Committee
Public Safety Committee

FROM: Rachel Bianchi

CC: Mayor Ekberg

DATE: November 7, 2017

SUBJECT: Fire Station 51 Design Update

ISSUE

City staff and consultants seek to share information about the design of Tukwila's new Fire Station 51.

BACKGROUND

As a part of implementing the Public Safety Plan, the City's fire stations architects, Weinstein A+U are finishing up schematic design of Fire Station 51. The intent is to share the initial drawings with the public at the City's Open House scheduled for December 2 from 10:00 a.m. to Noon at the Water District 125/Valley View Sewer building. Staff would like to ensure that Council has the opportunity to review the drawings first.

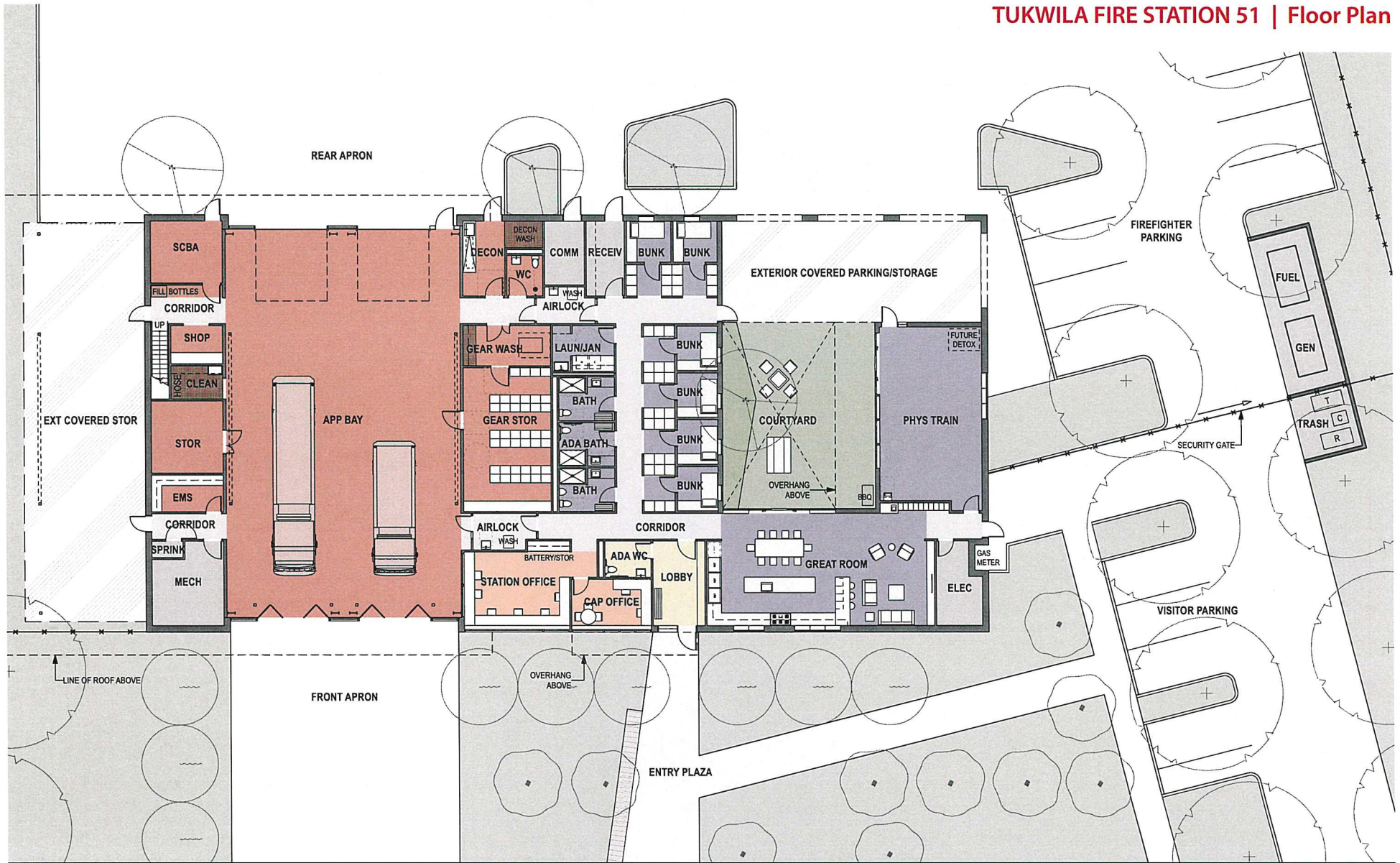
RECOMMENDATION



Information and discussion only

ATTACHMENTS

Fire Station 51 schematic designs

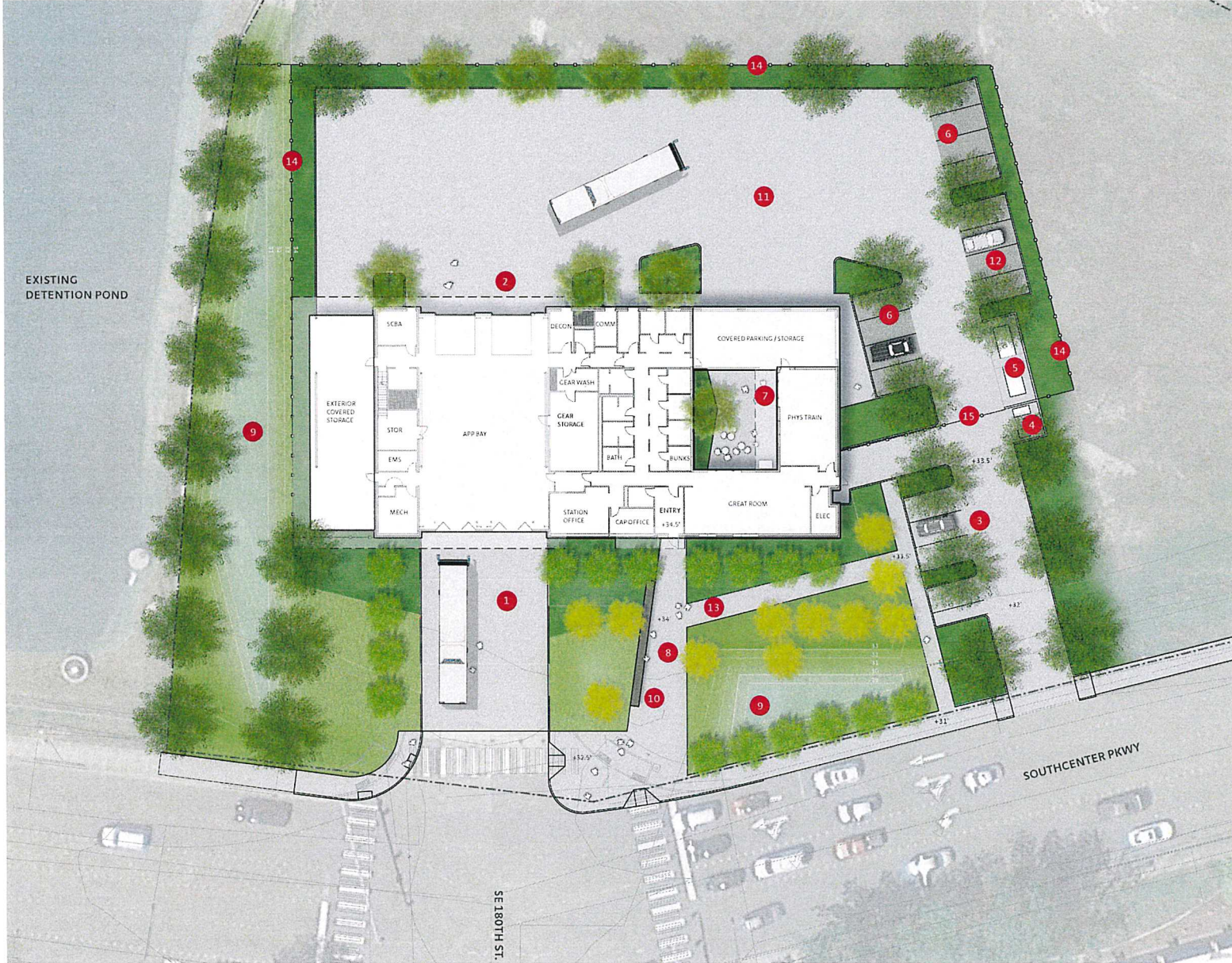
TUKWILA FIRE STATION 51 | Floor Plan



Scale: 1/8" = 1'-0"



WEINSTEIN A+U
 ARCHITECTS + URBAN DESIGNERS

TUKWILA FIRE STATION 51 | Illustrative Site Plan



- 1 FRONT APRON
- 2 REAR APRON
- 3 VISITOR PARKING
- 4 TRASH / RECYCLING
- 5 GENERATOR / FUELING
- 6 FIREFIGHTER PARKING
- 7 COURTYARD
- 8 PUBLIC ENTRY PLAZA
- 9 SLOPED PLANTING AND BIORETENTION CELL
- 10 FEATURE SEAT WALL
- 11 VEHICULAR CONCRETE PAVING
- 12 PERMEABLE CONCRETE PAVING
- 13 PEDESTRIAN CONCRETE PAVING
- 14 SECURITY FENCE
- 15 SECURE GATE

TUKWILA FIRE STATION 51 | 3D View

